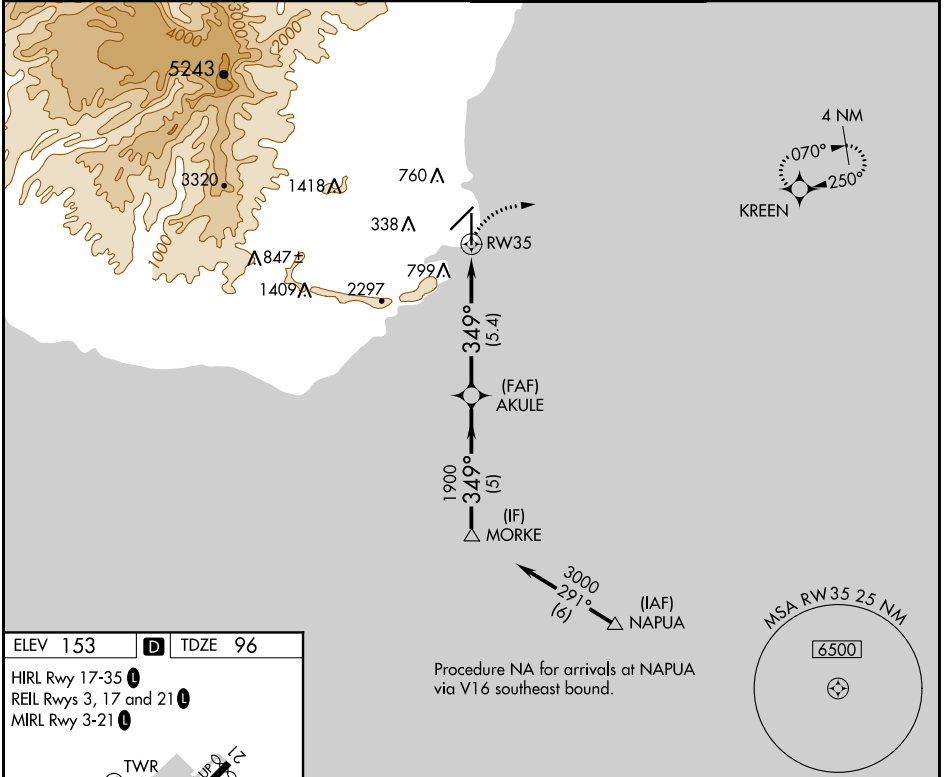


APP CRS 349°	Rwy Idg 6500
	TDZE 96
	Apt Elev 153

RNAV (RNP) Z RWY 35

LIHUE (LIH)(PHLI)

▼ GPS required. For inoperative MALSR, increase RNP 0.30 visibility to 1¾. For uncompensated Baro-VNAV systems, procedure NA below 14°C (57°F) or above 48°C (119°F).	MALSR 	MISSED APPROACH: Climbing right turn to 3000 direct KREEN and hold.
	ATIS 127.2	HCF CENTER 126.5 269.4
		GND CON 121.9



PAC, 10 OCT 2019 to 05 DEC 2019

PAC, 10 OCT 2019 to 05 DEC 2019

