

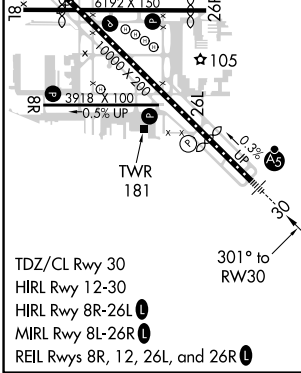
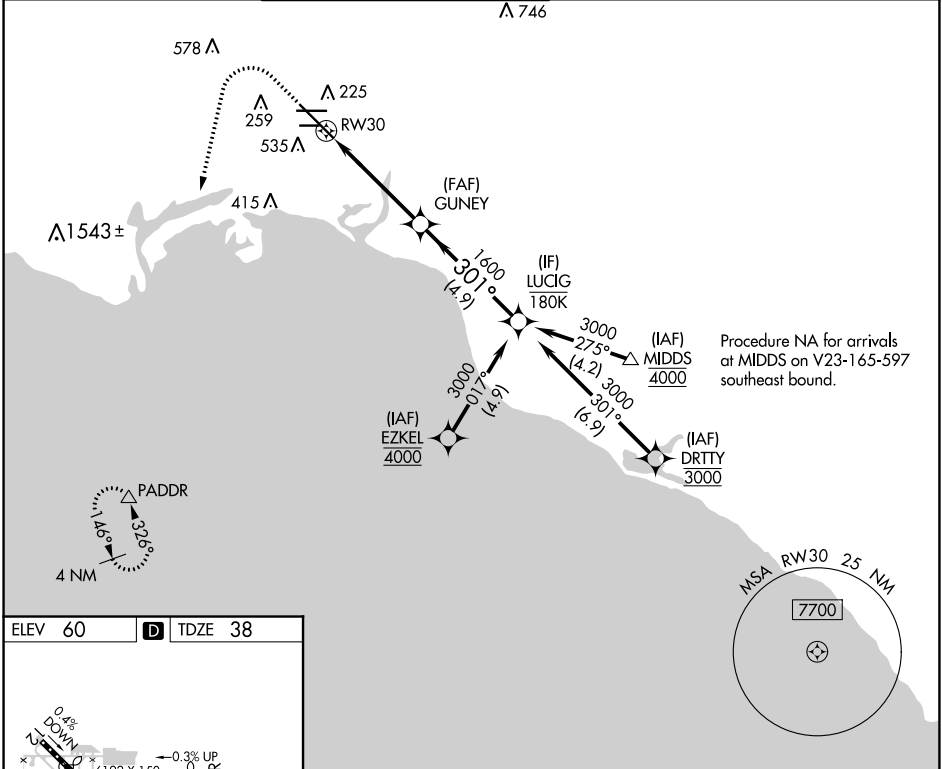
APP CRS	Rwy Idg	7414
301°	TDZE	38
	Apt Elev	60

RNAV (RNP) Y RWY 30

LONG BEACH/DAUGHERTY FIELD (LGB)

RNP AR APCH.		MALSR	MISSED APPROACH: Climb to 800 then climbing left turn to 3000 direct PADDR and hold.	
For uncompensated Baro-VNAV systems, procedure NA below 4° C or above 54° C.				

ATIS	SOCAL APP CON	LONG BEACH TOWER*	GND CON	CLNC DEL	UNICOM
127.75	125.35 316.125	120.5 257.6 (Rwy 12) 119.4 (CTAF) 257.6 (Rwy 30)	133.0 257.6	118.15	122.95



800	3000	PADDR	VGSI and RNAV glidepath not coincident (VGSI Angle 3.00/TCH 73).	
		LUCIG		
		GP 3.00° TCH 58		
CATEGORY	A	B	C	D
RNP 0.30 DA	384/30		346 (400-5%)	

AUTHORIZATION REQUIRED

SW-3, 16 JUL 2020 to 13 AUG 2020

SW-3, 16 JUL 2020 to 13 AUG 2020