

LOC/DME I-PZV 108.5 Chan 22	APP CRS 316°	Rwy Idg 7003 TDZE 7 Apt Elev 21
--	------------------------	---

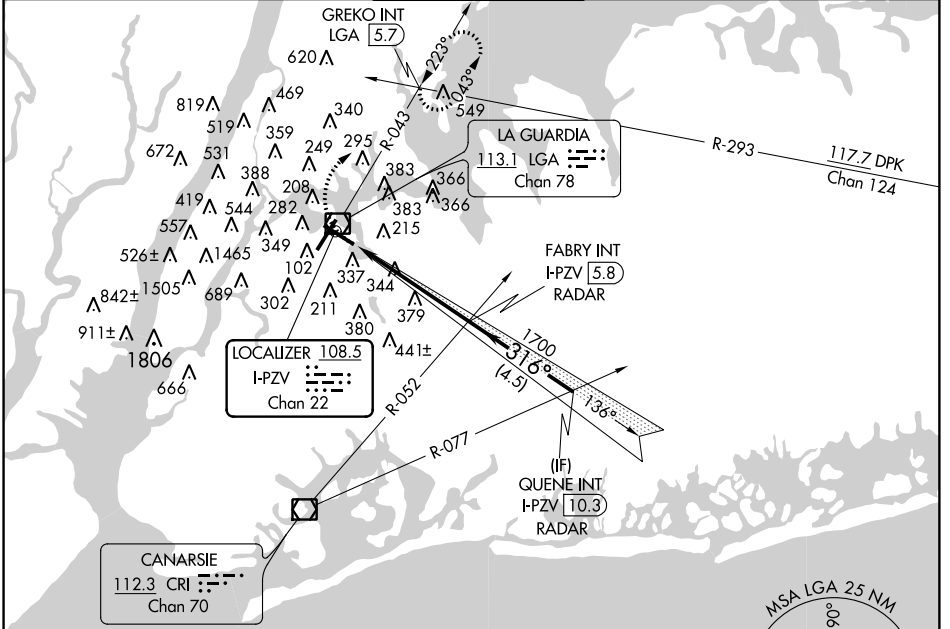
LOC RWY 31

LAGUARDIA (L.G.A)

▼ Helicopter visibility reduction below 1 SM NA.
▲ When VGSI inop, Straight-in/Circling Rwy 31 procedure NA at night. Circling NA to Rwy 4.

MISSED APPROACH: Climbing right turn to 2000 via LGA VOR/DME R-043 to GREKO INT/LGA 5.7 DME and hold.

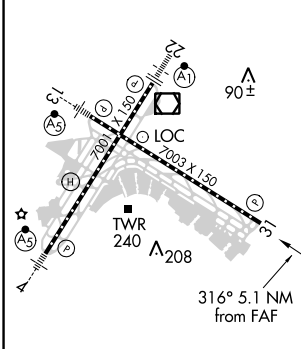
D-ATIS ARR 125.95 D-ATIS DEP 127.05	NEW YORK APP CON 120.8 263.0	LAGUARDIA TOWER 118.7 263.0	GND CON 121.7 263.0	CLNC DEL 135.2	CPDLC
--	--	---------------------------------------	-------------------------------	--------------------------	-------



NE-2. 07 DEC 2017 to 04 JAN 2018

NE-2. 07 DEC 2017 to 04 JAN 2018

ELEV 21	D	TDZE 7
---------	----------	--------

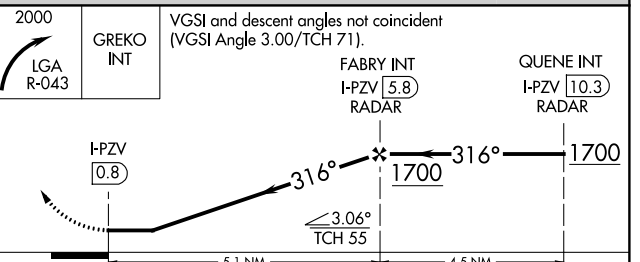


TDZ/CL Rws 4, 13 and 22
 HIRL Rws 4-22 and 13-31
 REIL Rws 13, 22 and 31

FAF to MAP 5.1 NM

Knots	60	90	120	150	180
Min:Sec	5:06	3:24	2:33	2:02	1:42

RADAR REQUIRED



CATEGORY	A	B	C	D
S-31	600/50	593 (600-1)	600-1½ 593 (600-1½)	600-1¾ 593 (600-1¾)
C CIRCLING	640-1	619 (700-1)	780-2¼ 759 (800-2¼)	1040-3 1019 (1100-3)