

LOC/DME I-GDI <b>108.5</b> Chan 22	APP CRS <b>134°</b>	Rwy Idg TDZE <b>7003</b> <b>12</b> Apt Elev <b>21</b>
--	------------------------	---

# COPTER ILS or LOC RWY 13

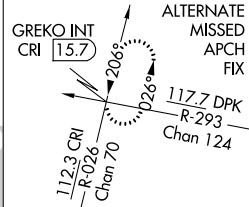
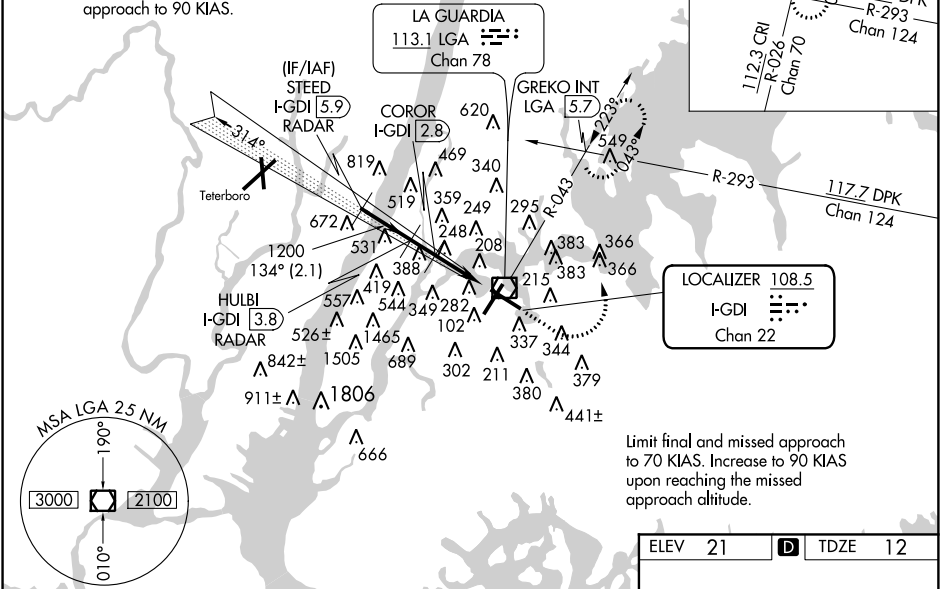
LAGUARDIA (L.G.A)

<b>▼</b> DME or RADAR required.	MALSR 	MISSED APPROACH: Climb to 800 then climbing left turn to 2000 via LGA VOR/DME R-043 to GREKO INT/ LGA 5.7 DME and hold.
---------------------------------	-----------	---

D-ATIS ARR <b>125.95</b> D-ATIS DEP <b>127.05</b>	NEW YORK APP CON <b>120.8 263.0</b>	LAGUARDIA TOWER <b>118.7 263.0</b>	GND CON <b>121.7 263.0</b>	CLNC DEL <b>135.2</b> <b>121.875 (COPTER)</b>	CPDLC
--	--	---------------------------------------	-------------------------------	---	-------

## RADAR REQUIRED

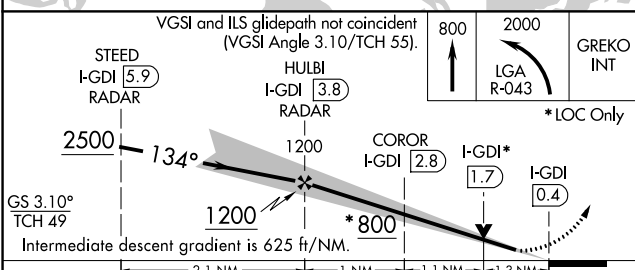
Limit intermediate approach to 90 KIAS.



Limit final and missed approach to 70 KIAS. Increase to 90 KIAS upon reaching the missed approach altitude.

NE-2. 26 APR 2018 to 24 MAY 2018

NE-2. 26 APR 2018 to 24 MAY 2018



ELEV 21	<b>D</b>	TDZE 12
---------	----------	---------

FAF to MAP 3.4 NM					
Knots	45	60	75	90	105
Min:Sec	4:32	3:24	2:43	2:16	1:57

CATEGORY	COPTER	B	C	D
H-ILS 13	212/12 200 (200-1/4)		NA	
H-LOC 13	800/12 788 (800-1/4)		NA	
COROR FIX MINIMUMS				
H-LOC 13	500/12 488 (500-1/4)		NA	