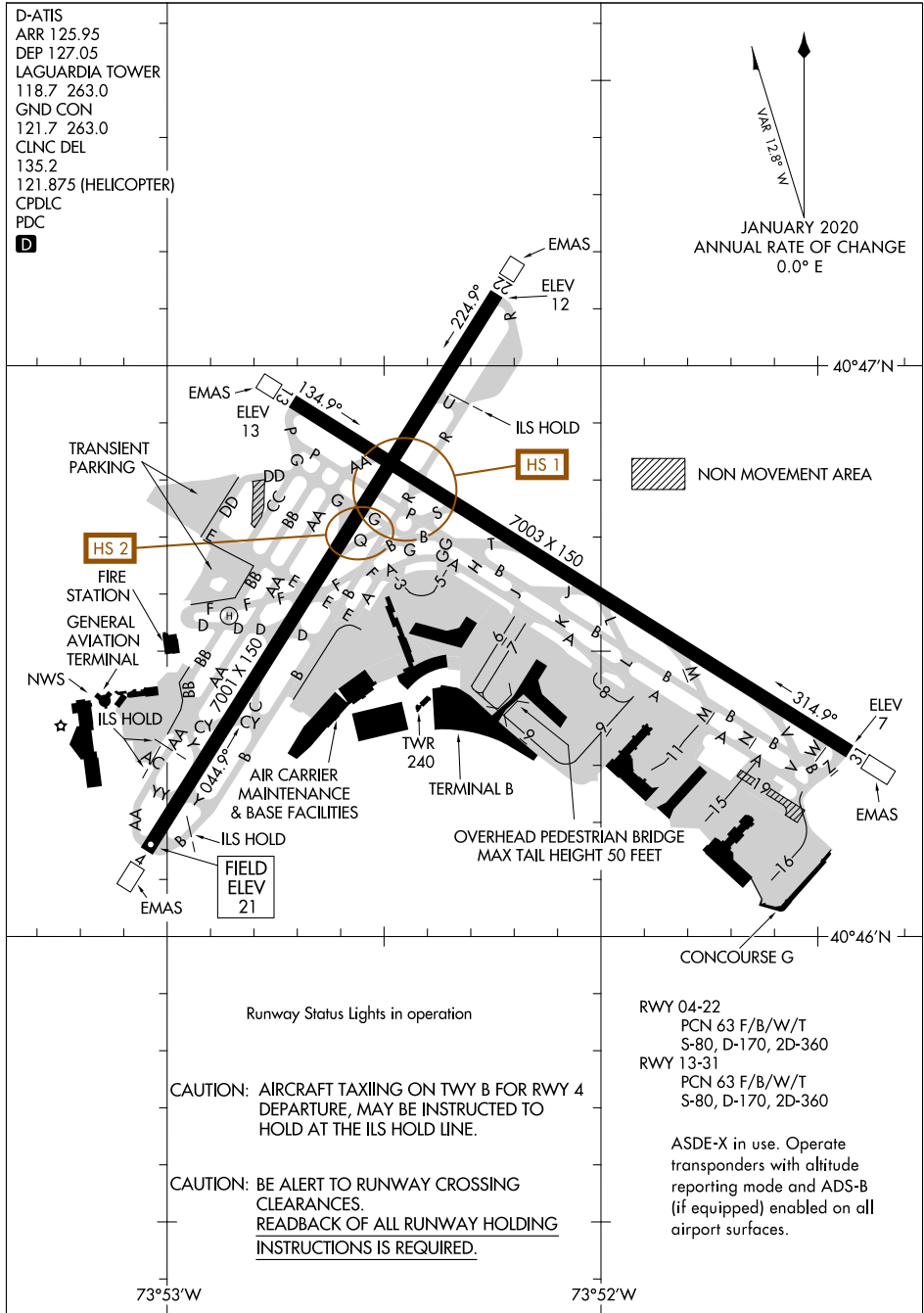


# AIRPORT DIAGRAM

AL-289 (FAA)

LAGUARDIA (L.G.A.)  
NEW YORK, NEW YORK



D-ATIS  
ARR 125.95  
DEP 127.05  
LAGUARDIA TOWER  
118.7 263.0  
GND CON  
121.7 263.0  
CLNC DEL  
135.2  
121.875 (HELICOPTER)  
CPDLC  
PDC

JANUARY 2020  
ANNUAL RATE OF CHANGE  
0.0° E

NE-2, 02 DEC 2021 to 30 DEC 2021

NE-2, 02 DEC 2021 to 30 DEC 2021

Runway Status Lights in operation

CAUTION: AIRCRAFT TAXIING ON TWY B FOR RWY 4 DEPARTURE, MAY BE INSTRUCTED TO HOLD AT THE ILS HOLD LINE.

CAUTION: BE ALERT TO RUNWAY CROSSING CLEARANCES. READBACK OF ALL RUNWAY HOLDING INSTRUCTIONS IS REQUIRED.

RWY 04-22  
PCN 63 F/B/W/T  
S-80, D-170, 2D-360

RWY 13-31  
PCN 63 F/B/W/T  
S-80, D-170, 2D-360

ASDE-X in use. Operate transponders with altitude reporting mode and ADS-B (if equipped) enabled on all airport surfaces.