

WAAS CH 78421 W23B	APP CRS 230°	Rwy Idg TDZE Apt Elev	10913 743 744
----------------------------------------	------------------------	-----------------------------	------------------------------------------

RNAV (GPS) RWY 23R

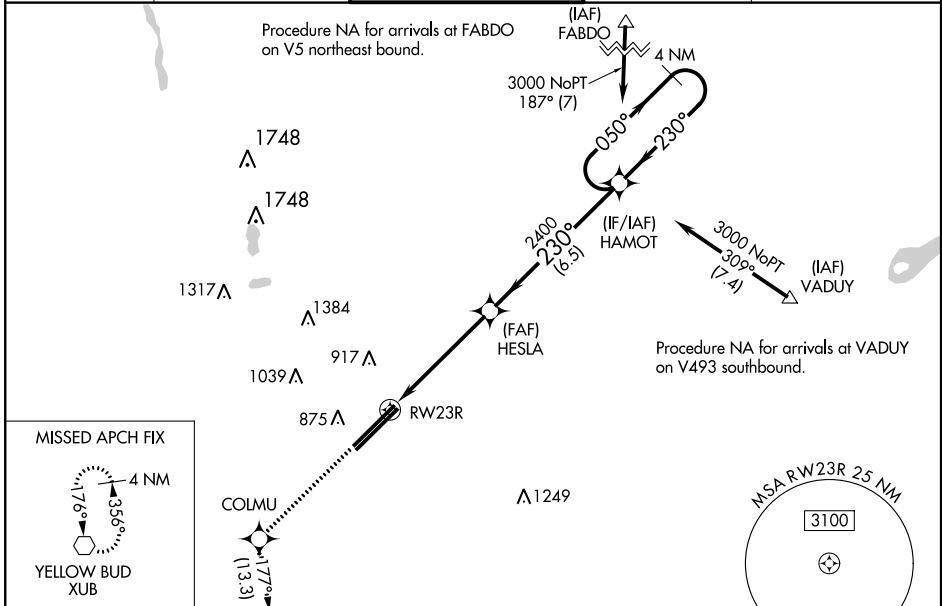
RICKENBACKER INTL (LCK)

RNP APCH.

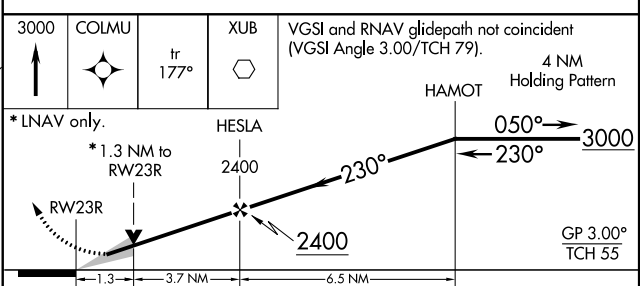
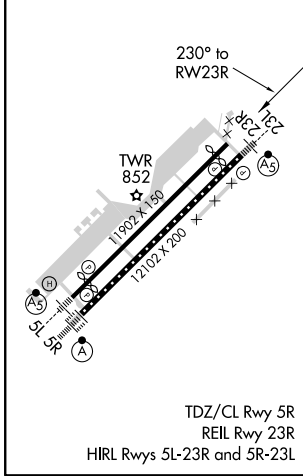
▲ Baro-VNAV NA when using John Glenn Columbus Intl altimeter setting. For uncompensated Baro-VNAV systems, LNAV/VNAV NA below -1.6°C or above 54°C. Circling NA northwest of Rwy 5L-23R. VDP NA with John Glenn Columbus Intl altimeter setting. When local altimeter setting not received, use John Glenn Columbus Intl altimeter setting and increase all DA 36 feet and all MDA 40 feet. Increase LNAV/VNAV visibility 1/8 mile all Cats.

MISSED APPROACH: Climb to 3000 direct COLMU and on track 177° to XUB VOR and hold.

ATIS 132.75	COLUMBUS APP CON 134.0 279.6	RICK TOWER 120.05 348.4	GND CON 125.275 275.8	CLNC DEL 125.275 275.8
-----------------------	----------------------------------------	-----------------------------------	---------------------------------	----------------------------------



ELEV 744	D	TDZE 743
-----------------	----------	-----------------



CATEGORY	A	B	C	D
LPV DA		943-3/4	200 (200-3/4)	
LNAV/VNAV DA		1006-7/8	263 (300-7/8)	
LNAV MDA	1220-1	477 (500-1)	1220-1 3/8	477 (500-1 3/8)
CIRCLING	1220-1	476 (500-1)	1220-1 1/2	1300-2
			476 (500-1 1/2)	556 (600-2)

EC-2, 07 NOV 2019 to 05 DEC 2019

EC-2, 07 NOV 2019 to 05 DEC 2019