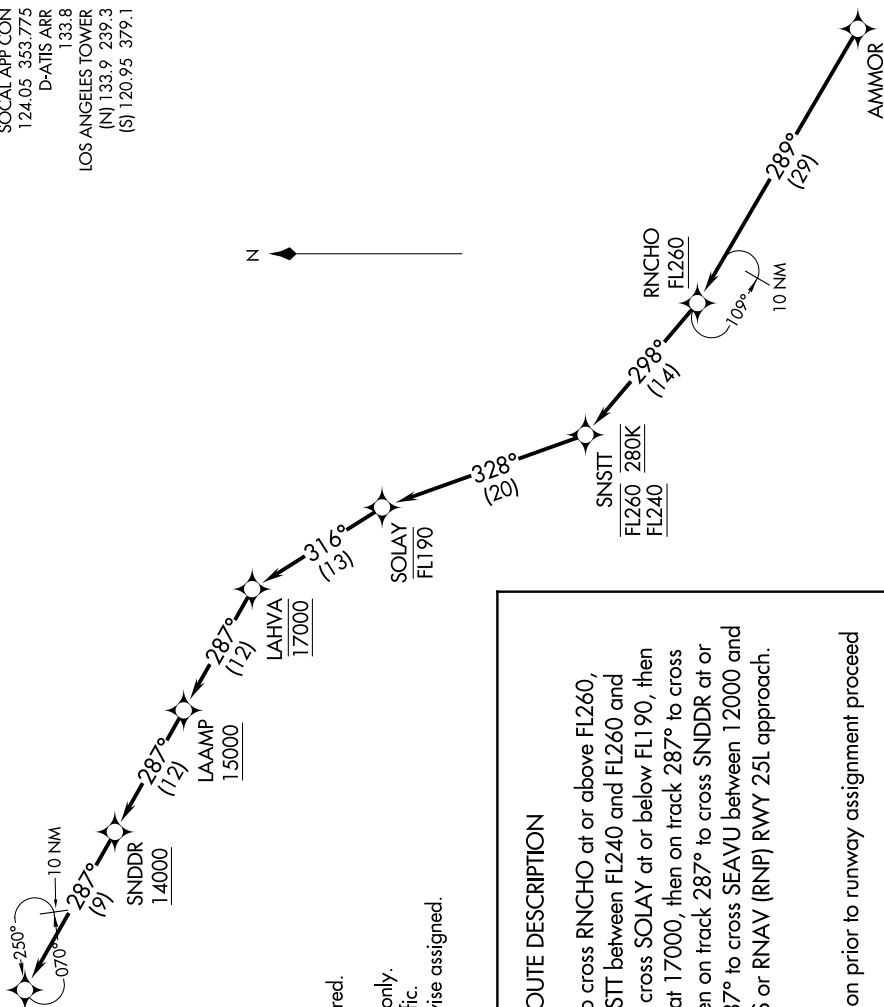


SOCAL APP CON  
124.05 353.775  
D-ATIS ARR  
133.8  
LOS ANGELES TOWER  
(N) 133.9 239.3  
(S) 120.95 379.1



SW-3, 20 JUN 2019 to 18 JUL 2019

**ARRIVAL ROUTE DESCRIPTION**

From AMMOR on track 289° to cross RNCHO at or above FL260, then on track 298° to cross SNSTT between FL240 and FL260 and at 280K, then on track 328° to cross SOLAY at or below FL190, then on track 316° to cross LAHVA at 17000, then on track 287° to cross LAAMP at or above 15000, then on track 287° to cross SNDDR at or above 14000, then on track 287° to cross SEAVU between 12000 and 14000 and at 270K. Expect ILS or RNAV (RNP) RWY 25L approach.

**LOST COMMUNICATIONS**  
In the event of lost communication prior to runway assignment proceed on ILS or LOC RWY 25L.

- NOTE: RADAR required.  
NOTE: RNAV 1.  
NOTE: DME/DME/IRU or GPS required.  
NOTE: Turbojet aircraft only.  
NOTE: SUNSTT STAR ATC assigned only.  
NOTE: Los Angeles landing west traffic.  
NOTE: Expect Rwy 25L unless otherwise assigned.

NOTE: Chart not to scale.

SW-3, 20 JUN 2019 to 18 JUL 2019