


APP CRS <b>251°</b>	Rwy Idg <b>11134</b>
	TDZE <b>104</b>
	Apt Elev <b>128</b>

# RNAV (RNP) Z RWY 25R

LOS ANGELES INTL (LAX)

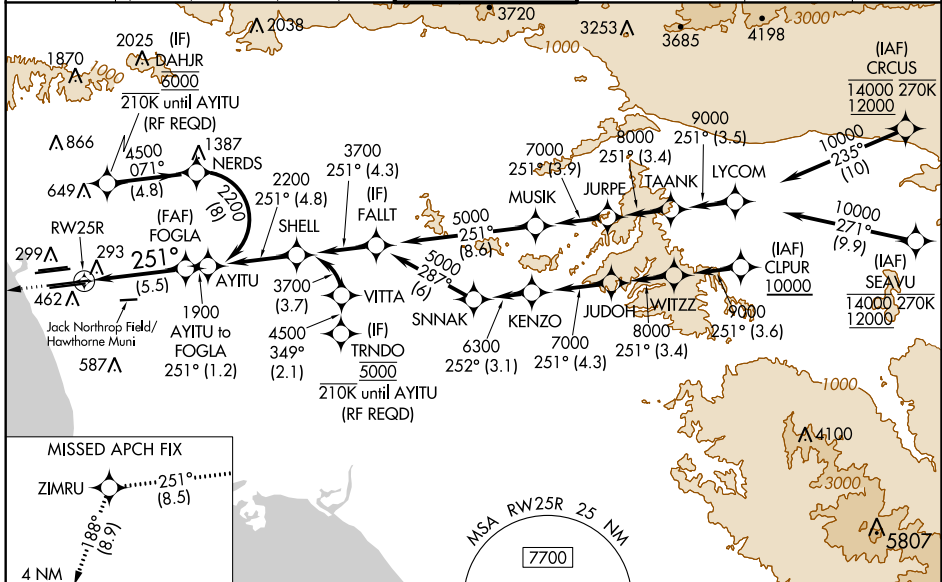
For uncompensated Baro-VNAV systems, procedure NA below 5°C (41°F) or above 54°C (130°F). Simultaneous approach authorized. Simultaneous approach authorized with HHR. GPS required. For inop ALS, increase RNP 0.11 all Cats visibility to RVR 6000.

MALSR



MISSED APPROACH: Climb to 2000 on track 251° to ZIMRU and track 188° to CATLY and hold.

D-ATIS ARR <b>133.8</b> DEP <b>135.65</b>	SOCAL APP CON (APCH FM WEST) <b>124.3 363.2</b> <b>124.5 235.975</b> (225°-044°)	<b>124.9 269.0</b> (090°-224°) <b>128.5 360.7</b> (045°-089°)	LOS ANGELES TOWER <b>N 133.9 239.3</b> <b>S 120.95 379.1</b>	GND CON <b>N 121.65 327.0</b> <b>S 121.75 327.0</b> <b>W 121.4 327.0</b>	CLNC DEL <b>120.35</b> <b>327.0</b>	CPDLC
---	--	--	--	---	---	-------



SW-3, 20 JUN 2019 to 18 JUL 2019

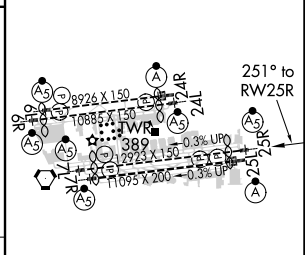
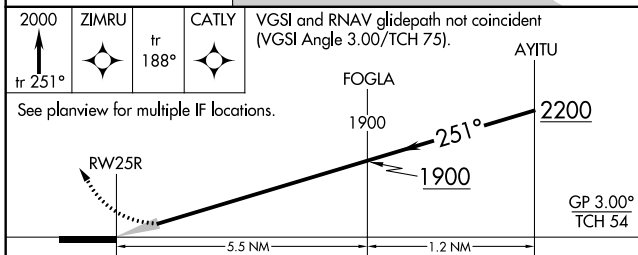
SW-3, 20 JUN 2019 to 18 JUL 2019

MISSED APCH FIX

4 NM  
2000  
ZIMRU  
188°  
CATLY  
1033°

MSA RW25R 25 NM  
7700

ELEV 128	TDZE 104
----------	----------



CATEGORY	A	B	C	D
RNP 0.11 DA		453/40	349 (400-¾)	
RNP 0.30 DA		544/50	440 (500-1)	

## AUTHORIZATION REQUIRED

TDZ/CL Rwy's 6R, 7L, 24R, and 25L  
HIRL all Rwy's