

APP CRS	Rwy Idg	11095
251°	TDZE	104
	Apt Elev	128

RNAV (RNP) Z RWY 25L

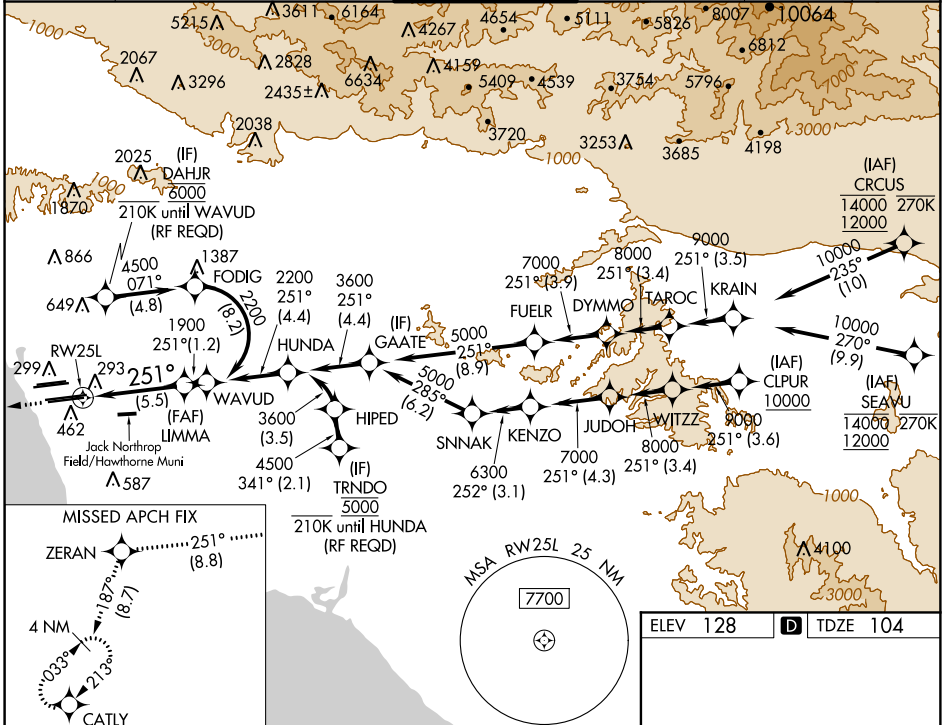
LOS ANGELES INTL (LAX)

For uncompensated Baro-VNAV systems, procedure NA below 5°C (41°F) or above 54°C (130°F). GPS required. Simultaneous approach authorized. Simultaneous approach authorized with HHR.

ALSF-2

MISSED APPROACH: Climb to 2000 on track 251° to ZERAN and on track 187° to CATLY and hold.

D-ATIS ARR 133.8 DEP 135.65	SOCAL APP CON 124.3 363.2 (APCH FM WEST) 124.5 235.975 (225°-044°)	124.9 269.0 (090°-224°) 128.5 360.7 (045°-089°)	LOS ANGELES TOWER N 133.9 239.3 S 120.95 379.1	GND CON N 121.65 327.0 S 121.75 327.0 W 121.4 327.0	CLNC DEL 120.35 327.0	CPDLC
---	--	--	--	---	---	-------



SW-3, 20 JUN 2019 to 18 JUL 2019

SW-3, 20 JUN 2019 to 18 JUL 2019

MISSED APCH FIX		ZERAN 251° (8.8)		CATLY 187° (8.7)		ELEV 128		TDZE 104	
2000	ZERAN	tr	187°	CATLY		VGSI and RNAV glidepath not coincident. (VGSI Angle 3.00/TCH 70).			
See planview for multiple IF locations.		RW25L		WAVUD		LIMMA			
2000		1900		2200		GP 3.00° TCH 54			
5.5 NM		1.2 NM							
CATEGORY	A	B	C	D					
RNP 0.15 DA	445/30		341 (400-5%)						
RNP 0.30 DA	543/50		439 (500-1)						
AUTHORIZATION REQUIRED									
						TDZ/CL Rwws 6R, 7L, 24R, and 25L HIRL all Rwws			