

RNAV (RNP) Z RWY 24R

LOS ANGELES INTL (LAX)

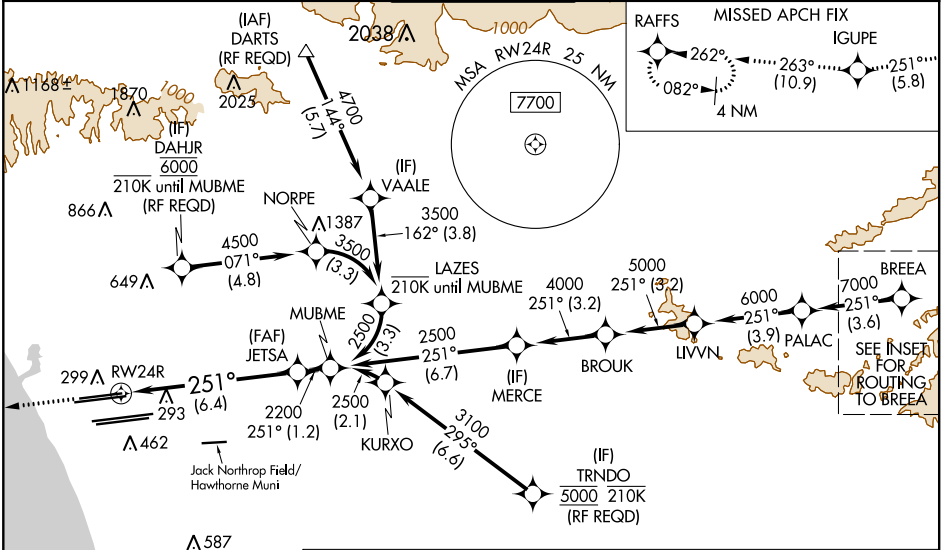
APP CRS	Rwy Idg	8925
251°	TDZE	122
	Apt Elev	128

For uncompensated Baro-VNAV systems, procedure NA below 5°C (41°F) or above 54°C (130°F). GPS required. For inop ALS, increase RNP 0.15 all Cats visibility to RVR 6000 and RNP 0.30 all Cats visibility to 1 1/2 SM. Simultaneous approach authorized. Simultaneous approach authorized with HHR.

ALSF-2

MISSED APPROACH: Climb to 2000 on track 251° to IGUPE and on track 263° to RAFFS and hold.

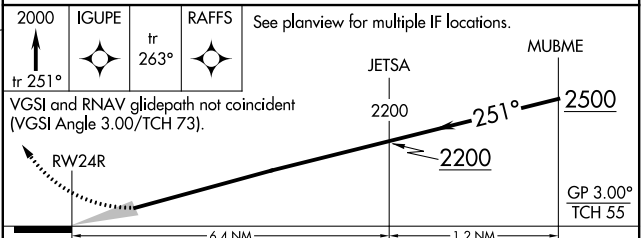
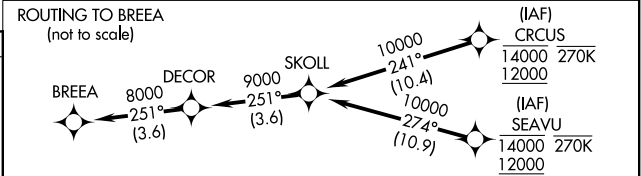
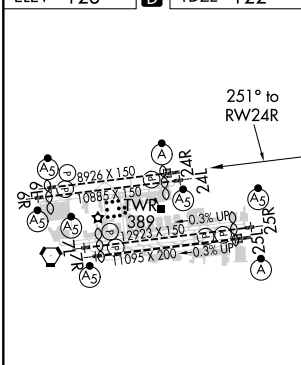
D-ATIS	SOCAL APP CON		LOS ANGELES TOWER	GND CON	CLNC DEL	CPDLC
ARR 133.8	124.3 363.2 (APCH FM WEST)	124.9 269.0 (090°-224°)	N 133.9 239.3 S 120.95 379.1	N 121.65 327.0 S 121.75 327.0 W 121.4 327.0	120.35 327.0	
DEF 135.65	124.5 235.975 (225°-044°)	128.5 360.7 (045°-089°)				



SW-3, 20 JUN 2019 to 18 JUL 2019

SW-3, 20 JUN 2019 to 18 JUL 2019

ELEV 128	D	TDZE 122
-----------------	----------	-----------------



CATEGORY	A	B	C	D
RNP 0.15 DA		484/40	362 (400-34)	
RNP 0.30 DA		586/60	464 (500-14)	

TDZ/CL Rwy's 6R, 7L, 24R, and 25L
HIRL all Rwy's

AUTHORIZATION REQUIRED