

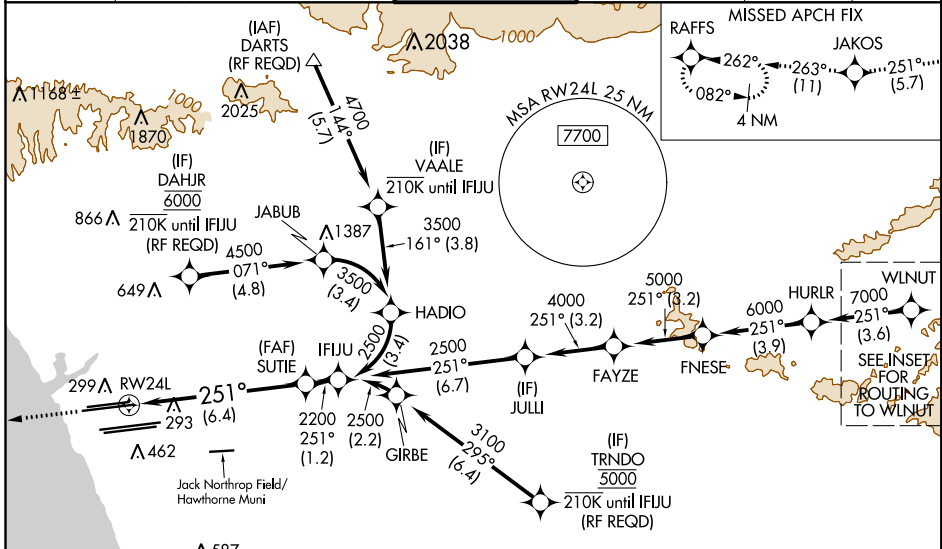
APP CRS	Rwy Idg	9483
251°	TDZE	123
	Apt Elev	128

RNAV (RNP) Z RWY 24L

LOS ANGELES INTL (LAX)

<p>▼ For uncompensated Baro-VNAV systems, procedure NA below 5°C (41°F) or above 54°C (130°F). Simultaneous approach authorized. Simultaneous approach authorized with KHHR. GPS required. For inop ALS, increase RNP 0.15 all Cats visibility to 1½ SM.</p>		<p>MISSED APPROACH: Climb to 2000 on track 251° to JAKOS and track 263° to RAFFS and hold.</p>
		<p>CPDLC</p>

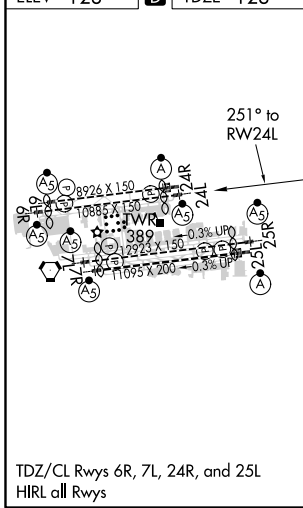
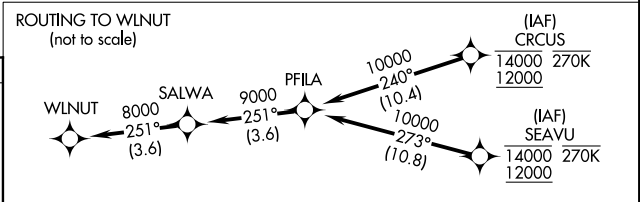
D-ATIS	SOCAL APP CON	LOS ANGELES TOWER	GND CON	CLNC DEL	CPDLC
ARR 133.8	124.3 363.2 (APCH FM WEST)	124.9 269.0 (090°-224°)	N 121.65 327.0 S 121.75 327.0 W 121.4 327.0	120.35 327.0	
DEP 135.65	124.5 235.975 (225°-044°)	128.5 360.7 (045°-089°)			



SW-3, 24 MAY 2018 to 21 JUN 2018

SW-3, 24 MAY 2018 to 21 JUN 2018

ELEV 128	D	TDZE 123
----------	----------	----------



2000	JAKOS	tr 263°	RAFFS	See planview for multiple IF locations.	SUTIE	IFJU
tr 251°					2200	2500
<p>VGSI and RNAV glidepath not coincident (VGSI Angle 3.00/TCH 79).</p>						
RWY 24L						GP 3.00° TCH 59
6.4 NM						

CATEGORY	A	B	C	D
RNP 0.15 DA		545/50	422 (500-1)	
RNP 0.30 DA		592/60	469 (500-1½)	

AUTHORIZATION REQUIRED