

LOC/DME I-LAX	APP CRS	Rwy Idg	25L	25R
<b>109.9</b>	<b>251°</b>	TDZE	<b>11095</b>	<b>11134</b>
Chan <b>36</b>		Apt Elev	<b>104</b>	<b>104</b>

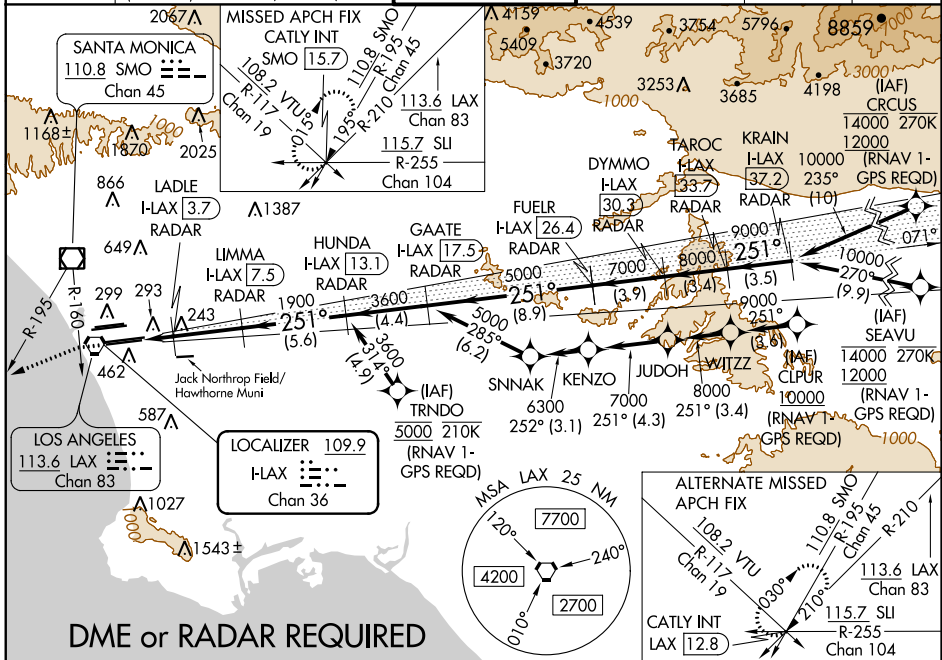
# ILS or LOC RWY 25L

LOS ANGELES INTL (LAX)

**▼** DME or RADAR required. Simultaneous approach authorized. Simultaneous approach authorized with HHR. LOC procedure NA during simultaneous operations with HHR LOC RWY 25.

ALSIF-2 Rwy 25L	MALSR Rwy 25R	MISSED APPROACH: Climb to 2000 on heading 251° until crossing the SMO R-160, then left turn on heading 236° and on the SMO R-195 to CATLY INT/SMO 15.7 DME and hold.
-----------------	---------------	--

D-ATIS	SOCAL APP CON	LOS ANGELES TOWER	GND CON	CLNC DEL	CPDLC
ARR <b>133.8</b>	<b>124.3 363.2</b> (APCH FM WEST)	<b>124.9 269.0</b> (090°-224°)	<b>N 121.65 327.0</b> <b>S 121.75 327.0</b> <b>W 121.4 327.0</b>	<b>120.35</b> <b>327.0</b>	
DEP <b>135.65</b>	<b>124.5 235.975</b> (225°-044°)	<b>128.5 360.7</b> (045°-089°)			



SW-3, 20 JUN 2019 to 18 JUL 2019

SW-3, 20 JUN 2019 to 18 JUL 2019

2000	SMO R-160	SMO R-195	CATLY INT	VGSIs and ILS glidepath not coincident (VGSi Angle 3.00/TCH 70).					
hdg 251°	hdg 236°			FUELR I-LAX	DYMMO I-LAX	TAROC I-LAX	KRAIN I-LAX		
*LOC only	LADLE I-LAX	LIMMA I-LAX	HUNDA I-LAX	GAATE I-LAX	FUELR I-LAX	DYMMO I-LAX	TAROC I-LAX	KRAIN I-LAX	
I-LAX (2)	I-LAX (3.7)	I-LAX (7.5)	I-LAX (13.1)	I-LAX (17.5)	I-LAX (26.4)	I-LAX (30.3)	I-LAX (33.7)	I-LAX (37.2)	
	RADAR	RADAR	RADAR	RADAR	RADAR	RADAR	RADAR	RADAR	
	1900	1900	3600	5000	7000	8000	9000	10000	
	700*	1900						GS 3.00°	
	1.2	0.6	3.7 NM	5.6 NM	4.4 NM	8.9 NM	3.9 NM	3.4 NM	3.5 NM
CATEGORY	A		B		C		D		
S-ILS 25L	304/18		200 (200-½)						
S-LOC 25L	540/24		436 (500-½)		540/40		436 (500-¾)		
SIDESTEP 25R	540/55		436 (500-1)		540-1½		436 (500-1½)		

ELEV 128 **D** TDZE 25L 104  
TDZE 25R 104

ALTERNATE MISSED APCH FIX

CATLY INT LAX 12.8

113.6 LAX Chan 83

115.7 SU R-255 Chan 104

108.2 VTU R-117 Chan 19

110.8 SMO R-195 Chan 45

R-210

251°

251° 5.5 NM from FAF