

LOC/DME HAS <b>111.1</b> Chan <b>48</b>	APP CRS <b>071°</b>	Rwy Idg 7L <b>11259</b> 7R <b>11095</b> TDZE <b>128</b> <b>128</b> Apt Elev <b>128</b> <b>128</b>
---	------------------------	--

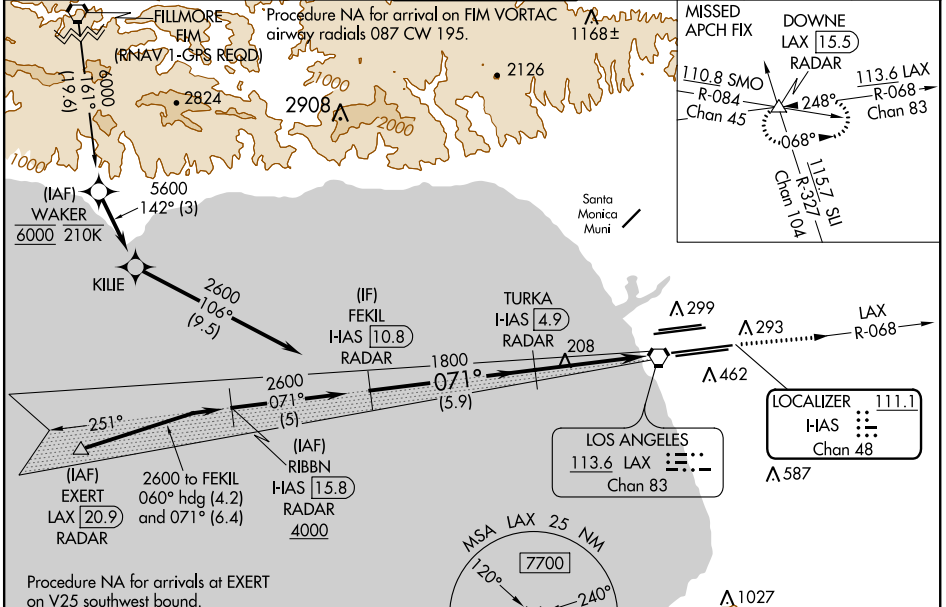
# ILS or LOC RWY 7L

LOS ANGELES INTL (LAX)

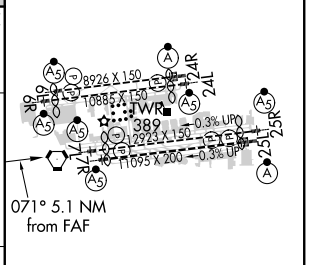
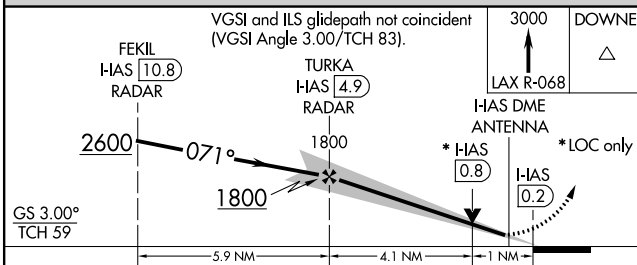
Simultaneous approach authorized. DME or RADAR required.  
Inop table does not apply to Sidestep Rwy 7R Cats A and B.

MALSR Rwy 7L	MALSR Rwy 7R	MISSED APPROACH: Climb to 3000 on LAX VORTAC R-068 to DOWNE INT/LAX 1.5.5 DME/RADAR and hold.
--------------	--------------	---

D-ATIS ARR <b>133.8</b> DEP <b>135.65</b>	SOCAL APP CON <b>124.3 363.2</b> (APCH FM WEST) <b>124.5 235.975</b> (225°-044°)	<b>124.9 269.0</b> (090°-224°) <b>128.5 360.7</b> (045°-089°)	LOS ANGELES TOWER <b>N 133.9 239.3</b> <b>S 120.95 379.1</b>	GND CON <b>N 121.65 327.0</b> <b>S 121.75 327.0</b> <b>W 121.4 327.0</b>	CLNC DEL <b>120.35</b> <b>327.0</b>	CPDLC
---	--	--	--	---	---	-------



ELEV 128	TDZE 7L 128	TDZE 7R 128
----------	-------------	-------------



CATEGORY	A	B	C	D
S-ILS 7L	336/18		208 (300-1/2)	
S-LOC 7L	520/24	392 (400-1/2)		520/35 392 (400-3/4)
SIDESTEP 7R	520/55 392 (400-1/4)			520-1/2 392 (400-1/2)

FAF to MAP 5.1 NM					
Knots	60	90	120	150	180
Min:Sec	5:06	3:24	2:33	2:02	1:42

SW-3, 24 MAY 2018 to 21 JUN 2018

SW-3, 24 MAY 2018 to 21 JUN 2018