

TUSTI TWO DEPARTURE (RNAV)
(TUSTI2.TUSTI) 17AUG17

(TUSTI2.TUSTI) 17Z29
TUSTI TWO DEPARTURE (RNAV)

AL-237 (FAA)

LOS ANGELES INTL (LAX)
LOS ANGELES, CALIFORNIA

**TOP ALTITUDE:
17000**

TAKEOFF MINIMUMS

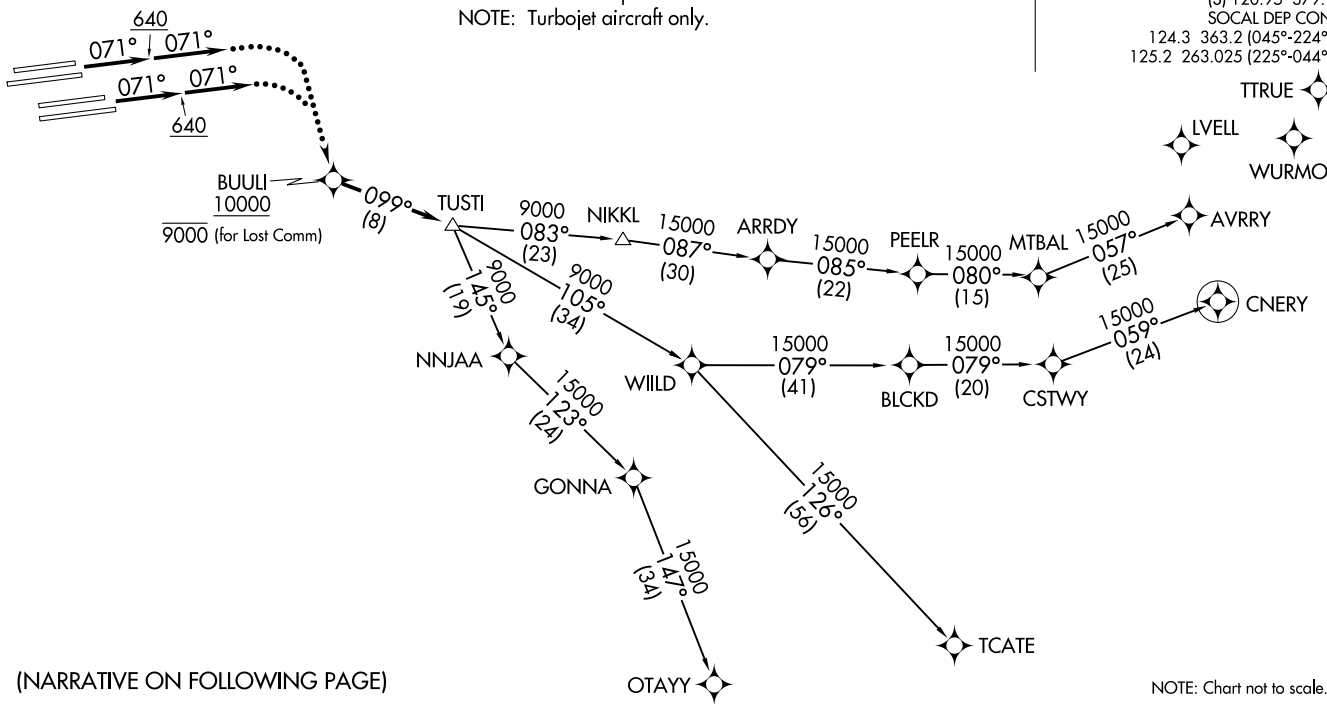
Rwys 6L/R, 7L/R: Standard with minimum climb of 500' per NM to 640.
Rwys 24L/R, 25L/R: NA-ATC.

- NOTE: DME/DME/IRU or GPS required.
- NOTE: RNAV 1.
- NOTE: RADAR required.
- NOTE: Turbojet aircraft only.



D-ATIS DEP 135.65
CLNC DEL 120.35 327.0
CPDLC
GND CON
(N) 121.65 327.0
(S) 121.75 327.0
(W) 121.4 327.0
LOS ANGELES TOWER
(N) 133.9 239.3
(S) 120.95 379.1
SOCAL DEP CON
124.3 363.2 (045°-224°)
125.2 263.025 (225°-044°)

TTRUE
LVLL
WURMO



(NARRATIVE ON FOLLOWING PAGE)

NOTE: Chart not to scale.

LOS ANGELES, CALIFORNIA
LOS ANGELES INTL (LAX)



DEPARTURE ROUTE DESCRIPTION

TAKEOFF RUNWAYS 6L/R, 7L/R: Climb heading 071° to 640, then on heading 071° or as assigned by ATC, expect vectors to BUULI, then on track 099° to TUSTI, thence. . . .

. . . .on (transition) maintain 17000, expect filed altitude five minutes after departure.

LOST COMMUNICATIONS: If not in contact with Departure Control within five minutes after departure, turn right and proceed direct BUULI WP, cross BUULI at or below 9000. Climb to FL230 or filed altitude whichever is lower, and when able proceed direct filed or assigned route/fix/transition. Aircraft filing FL230 or above, climb to filed altitude ten minutes after departure.

AVRRY TRANSITION (TUSTI2.AVRRY)

CNERV TRANSITION (TUSTI2.CNERV)

OTAYY TRANSITION (TUSTI2.OTAYY)

TCATE TRANSITION (TUSTI2.TCATE)

SW-3, 20 JUN 2019 to 18 JUL 2019

SW-3, 20 JUN 2019 to 18 JUL 2019