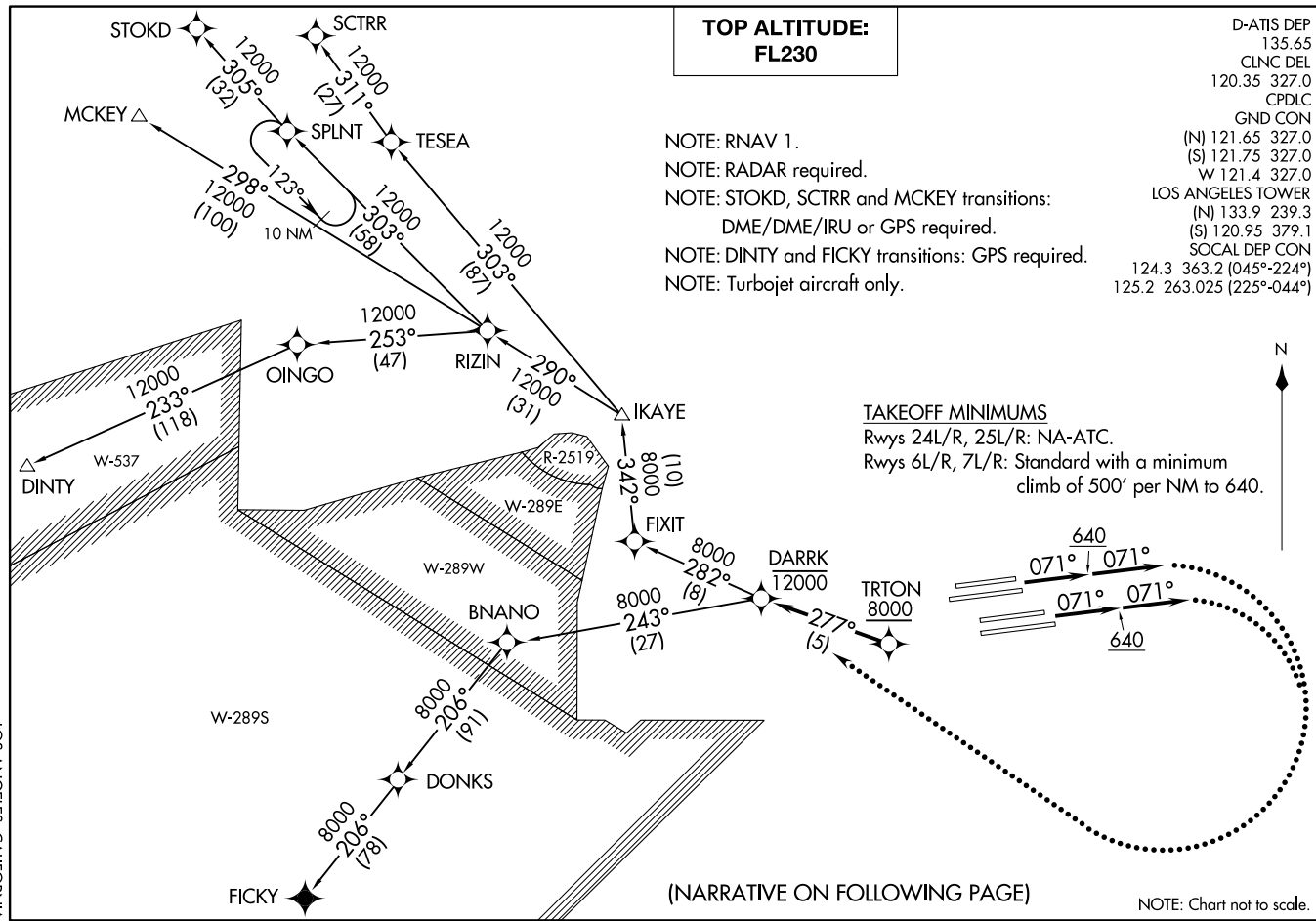


TRITON TWO DEPARTURE (RNAV)  
(TRITON2, TRITON) 01 FEB 18

LOS ANGELES, CALIFORNIA  
LOS ANGELES INTL (LAX)



**TOP ALTITUDE:**  
**FL230**

- NOTE: RNAV 1.
- NOTE: RADAR required.
- NOTE: STOKD, SCTRR and MCKEY transitions:  
DME/DME/IRU or GPS required.
- NOTE: DINTY and FICKY transitions: GPS required.
- NOTE: Turbojet aircraft only.

**TAKEOFF MINIMUMS**  
Rwys 24L/R, 25L/R: NA-ATC.  
Rwys 6L/R, 7L/R: Standard with a minimum  
climb of 500' per NM to 640.

- D-ATIS DEP 135.65
- CLNC DEL 120.35 327.0
- CPDLC 120.4 327.0
- GND CON (N) 121.65 327.0
- (S) 121.75 327.0
- W 121.4 327.0
- LOS ANGELES TOWER (N) 133.9 239.3
- (S) 120.95 379.1
- SOCAL DEP CON 124.3 363.2 (045°-224°)
- 125.2 263.025 (225°-044°)



(NARRATIVE ON FOLLOWING PAGE)

NOTE: Chart not to scale.

(TRITON2, TRITON) 18032  
TRITON TWO DEPARTURE (RNAV)

AL-237 (FAA)

LOS ANGELES INTL (LAX)  
LOS ANGELES, CALIFORNIA



DEPARTURE ROUTE DESCRIPTION

TAKEOFF RUNWAYS 6L/R, 7L/R: Climb on heading 071° to 640, then climb on heading 071° or as assigned by ATC, expect vectors to cross TRTON at or above 8000, then on track 277° to cross DARRK at or below 12000, thence. . . .

. . . .on (transition) maintain FL230. Expect filed altitude 5 minutes after departure.

LOST COMMUNICATIONS

If not in contact with departure control within 5 minutes after departure, turn right and proceed direct DARRK WP, cross DARRK at or below 12000'. Climb to FL230 or filed altitude, whichever is lower, and when able proceed direct filed route or assigned route/fix/transition. Aircraft filing FL240 or above, climb to filed altitude ten minutes after departure.

DINTY TRANSITION (TRTON2.DINTY)

FICKY TRANSITION (TRTON2.FICKY)

MCKEY TRANSITION (TRTON2.MCKEY)

SCTRR TRANSITION (TRTON2.SCTRR)

STOKD TRANSITION (TRTON2.STOKD)

SW-3, 20 JUN 2019 to 18 JUL 2019

SW-3, 20 JUN 2019 to 18 JUL 2019