

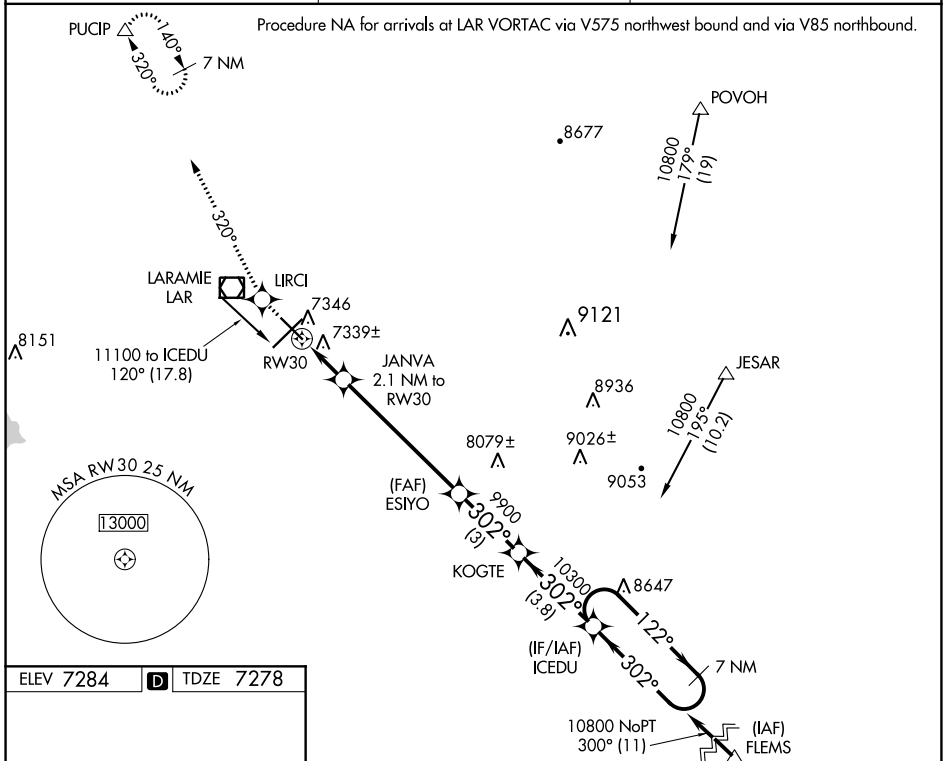
WAAS CH 53600 W30A	APP CRS 302°	Rwy Idg TDZE Apt Elev	6300 7278 7284
---------------------------------	------------------------	-----------------------------	---

RNAV (GPS) RWY 30

LARAMIE RGNL (L.A.R.)

-35°C	Inop table does not apply. DME/DME RNP-0.3 NA. For uncompensated Baro-VNAV systems, LNAV/VNAV NA below -29°C (-20°F) or above 35°C (95°F).	ODALS 	MISSED APPROACH: Climb to 9400 direct LIRCI and via 320° track to PUCIP and hold.
-------	--	-----------	--

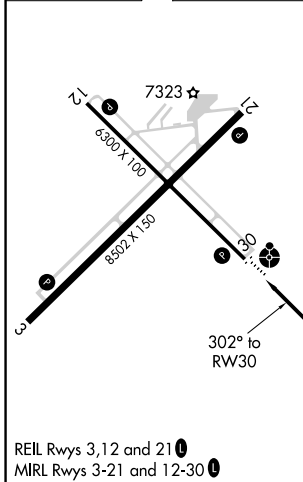
ASOS 135.475	DENVER CENTER 125.9 284.7	UNICOM 123.05 (CTAF)
------------------------	-------------------------------------	--------------------------------



NW-1, 25 FEB 2021 to 25 MAR 2021

NW-1, 25 FEB 2021 to 25 MAR 2021

ELEV 7284		TDZE 7278
-----------	--	-----------



REIL Rws 3,12 and 21
MIRL Rws 3-21 and 12-30

9400	LIRCI	tr 320°	PUCIP	ICEDU	7 NM Holding Pattern
*LNAV only		JANVA 2.1 NM to RW30	ESIYO	KOGTE	10800
*0.9 NM to RW30		RW30	7980	9900	GP 3.00° TCH 41
0.9		1.2 NM	5.8 NM	3 NM	3.8 NM
CATEGORY	A	B	C	D	
LPV DA	7528-1 250 (300-1)				
LNAV/VNAV DA	7629-1 1/4 351 (400-1 1/4)				
LNAV MDA	7600-1 322 (400-1)				
CIRCLING	7660-1 1/4 376 (400-1 1/4)	7740-1 1/4 456 (500-1 1/4)	7740-1 1/2 456 (500-1 1/2)	7840-2 556 (600-2)	