

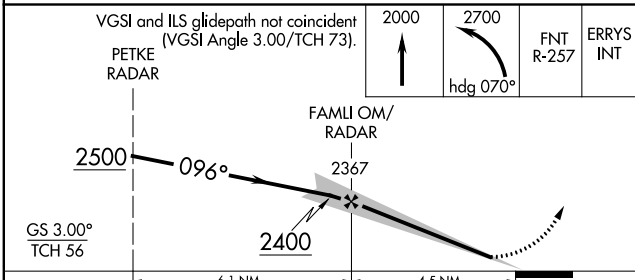
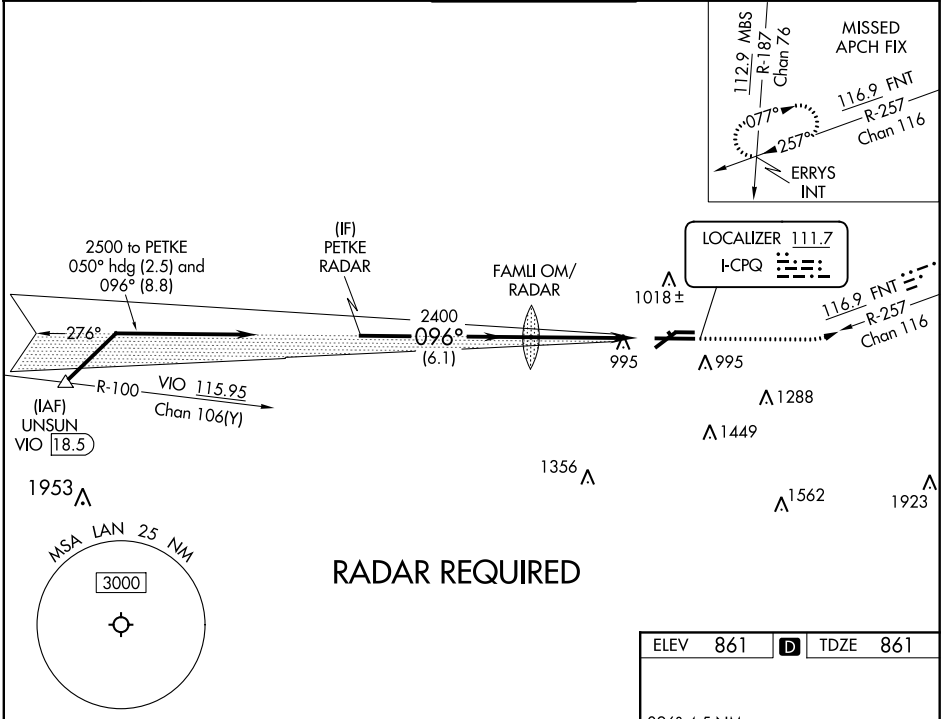
LOC I-CPQ 111.7	APP CRS 096°	Rwy Idg TDZE Apt Elev	8506 861 861
---------------------------	------------------------	-----------------------------	---

ILS or LOC RWY 10R

CAPITAL REGION INTL (LAN)

<p>Circling Rwy 10L, 28R NA at night. ** RVR 1800 authorized with use of FD or AP or HUD to DA.</p>	<p>MALS</p>	<p>MISSED APPROACH: Climb to 2000 then climbing left turn to 2700 on heading 070° and on FNT VORTAC R-257 to ERRYS INT and hold.</p>
---	-------------	--

<p>ATIS 119.75</p>	<p>GREAT LAKES APP CON * 118.65 226.4</p>	<p>LANSING TOWER 119.9 240.9</p>	<p>GND CON 121.9</p>	<p>CLNC DEL 123.675</p>
-------------------------------	--	---	---------------------------------	------------------------------------



ELEV 861	D	TDZE 861			
<p>REIL Rwy 6 and 24</p> <p>HIRL Rwy 10R-28L</p> <p>MIRL Rwy 6-24 and 10L-28R</p> <p>FAF to MAP 4.5 NM</p>					
Knots	60	90	120	150	180
Min:Sec	4:30	3:00	2:15	1:48	1:30

CATEGORY	A	B	C	D
S-ILS 10R**	1061/24		200 (200-½)	
S-LOC 10R	1340/24	479 (500-½)	1340/50	479 (500-1)
C CIRCLING	1380-1	519 (600-1)	1600-2 739 (800-2)	1760-3 899 (900-3)

EC-1, 12 AUG 2021 to 09 SEP 2021

EC-1, 12 AUG 2021 to 09 SEP 2021