

BIG BEAR CITY, CALIFORNIA

AL-9469 (FAA)

19171

WAAS CH <b>99434</b> <b>W26A</b>	APP CRS <b>256°</b>	Rwy Idg TDZE Apt Elev	<b>5250</b> <b>6752</b> <b>6752</b>
--	------------------------	-----------------------------	---

# RNAV (GPS) RWY 26

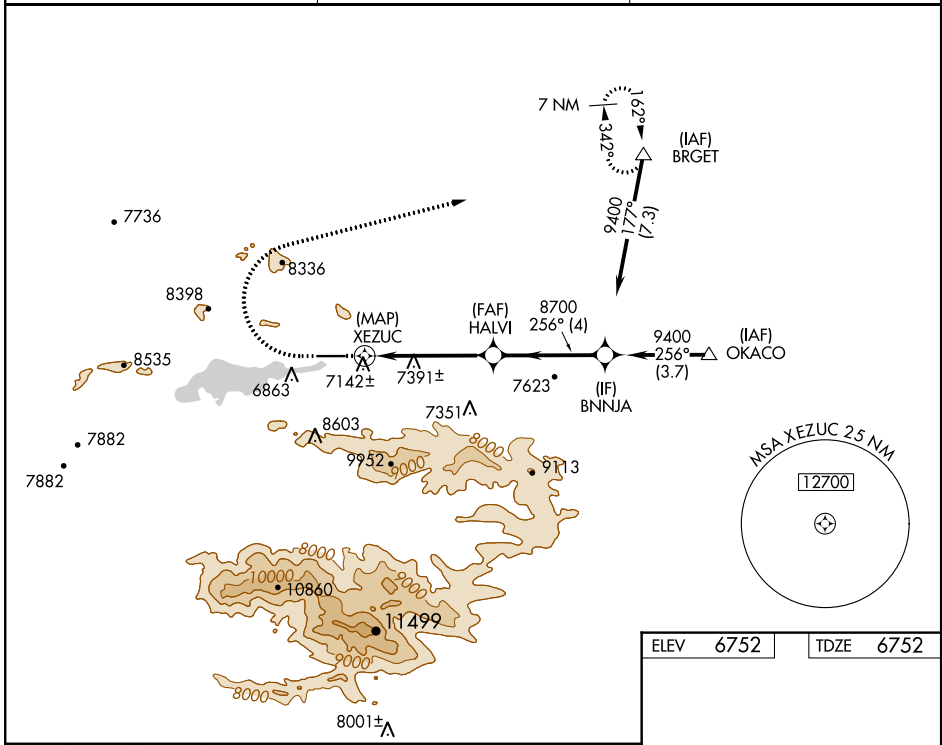
BIG BEAR CITY (L35)

RNP APCH.

Straight-in Rwy 26 NA at night. Circling Rwy 26 NA at night. Circling NA north of Rwy 8-26. Rwy 26 helicopter visibility reduction below 1 SM NA.

MISSED APPROACH:  
Climb to 8800, then climbing right turn to 11000 direct BRGET and hold.

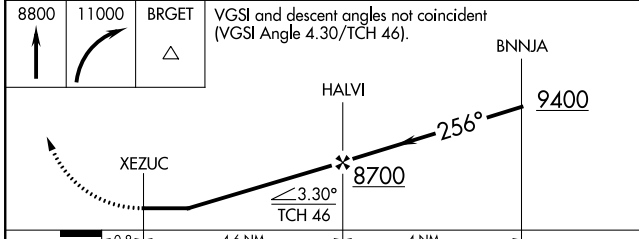
AWOS-3 <b>135.925</b>	LOS ANGELES CENTER <b>126.35 290.2</b>	UNICOM <b>122.725</b> (CTAF)
--------------------------	---	---------------------------------



SW-3, 25 FEB 2021 to 25 MAR 2021

SW-3, 25 FEB 2021 to 25 MAR 2021

ELEV <b>6752</b>	TDZE <b>6752</b>
------------------	------------------



CATEGORY	A	B	C	D
LP MDA	8140-1¼ 1388 (1400-1¼)	8140-1½ 1388 (1400-1½)		NA
LNAV MDA	8260-1¼ 1508 (1600-1¼)	8260-1½ 1508 (1600-1½)		NA
CIRCLING	8260-1¼ 1508 (1600-1¼)	8260-1½ 1508 (1600-1½)		NA

MIRL Rwy 8-26

BIG BEAR CITY, CALIFORNIA  
Amdt 2B 20JUN19

34°16'N-116°51'W

# BIG BEAR CITY (L35) RNAV (GPS) RWY 26