

| | | |
|--|------------------------|------------------------|
| WAAS CH 61324 W23A | APP CRS 226° | Rwy Idg 4000 |
| | TDZE 412 | |
| | Apt Elev 412 | |

RNAV (GPS) RWY 23

HANCOCK COUNTY/RON LEWIS FLD (KY8)

RNP APCH.

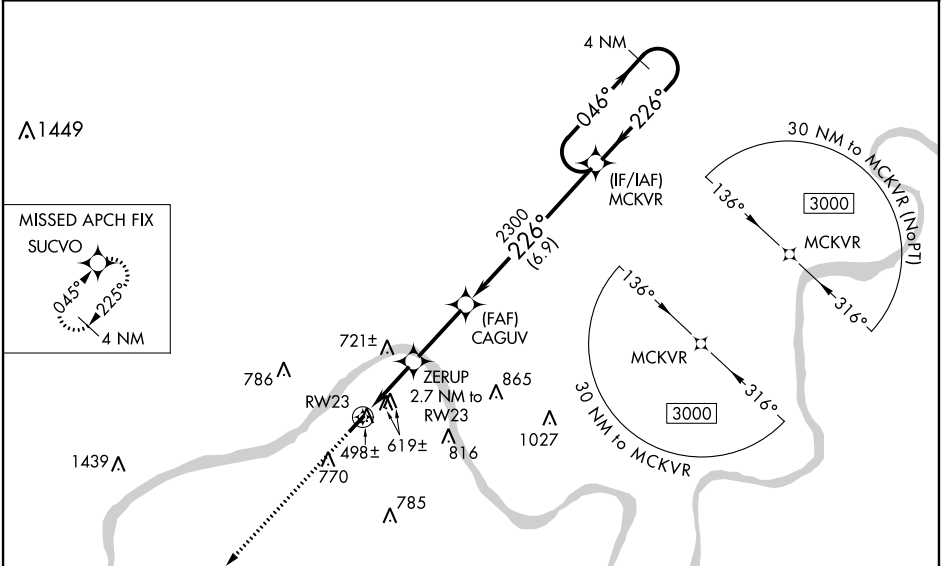
Baro-VNAV NA when using Owensboro altimeter setting. For uncompensated Baro-VNAV systems, LNAV/VNAV NA below -15°C or above 54°C. When local altimeter setting not received, use Owensboro altimeter setting and increase LPV DA to 887, LNAV/VNAV DA to 986 and all MDA 60 feet; increase LPV all Cats and LNAV Cat C visibility 1/8 mile, increase LNAV/VNAV all Cats and Circling Cat C visibility 1/4 mile. Rwy 23 helicopter visibility reduction below 3/4 SM NA.

MISSED APPROACH:
Climb to 3000 direct
SUCVO and hold.

AWOS-3
119.775

EVANSVILLE APP CON ★
124.025 290.9

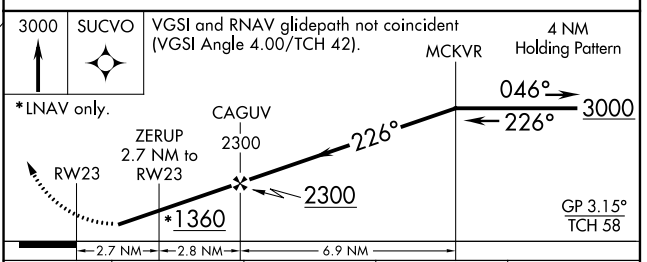
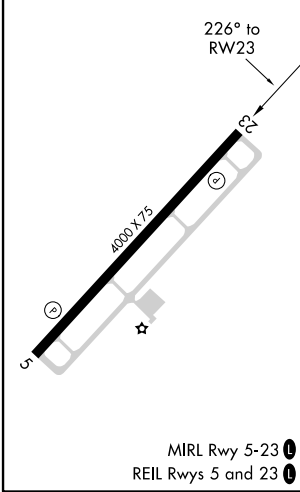
UNICOM
123.0 (CTAF) 0



SE-1, 02 DEC 2021 to 30 DEC 2021

SE-1, 02 DEC 2021 to 30 DEC 2021

| | |
|----------|----------|
| ELEV 412 | TDZE 412 |
|----------|----------|



| CATEGORY | A | B | C | D |
|--------------|----------------------|-----------------------|-------------------------------|----|
| LPV DA | 841-1 3/8 | 429 (500-1 3/8) | | NA |
| LNAV/VNAV DA | 940-1 5/8 | 528 (600-1 5/8) | | NA |
| LNAV MDA | 880-1 | 468 (500-1) | 880-1 3/8 468 (500-1 3/8) | NA |
| CIRCLING | 980-1 568 (600-1) | 1080-1 668 (700-1) | 1080-1 3/4 668 (700-1 3/4) | NA |