

WAAS CH <b>61224</b> <b>W07A</b>	APP CRS <b>070°</b>	Rwy Idg <b>3949</b> TDZE <b>390</b> Apt Elev <b>399</b>
--	------------------------	---

**RNAV (GPS) RWY 7**  
ALLENTOWN QUEEN CITY MUNI (XLL)

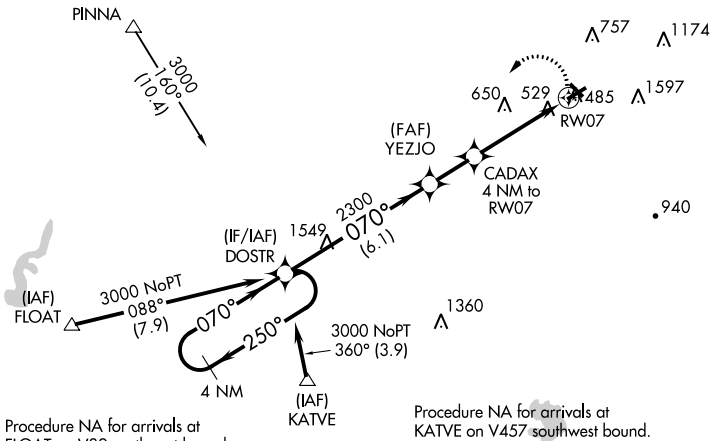
**⚠** Circling NA south of Rws 7 and 25. DME/DME RNP-0.3 NA.  
When local altimeter setting not received, use Lehigh Valley  
Intl altimeter setting and increase all MDA 20 feet and increase  
LP Cat C visibility to 1½. Night landing Rwy 15, 25, 33 NA at night.

**MISSED APPROACH:**  
Climbing left turn to 3000  
direct DOSTR and hold.

AWOS-3 <b>127.875</b>	ALLENTOWN APP CON <b>119.65 124.45 351.8</b>	CLNC DEL <b>118.9</b>	UNICOM <b>122.7 (CTAF) 0</b>
--------------------------	---	--------------------------	---------------------------------

• 1674

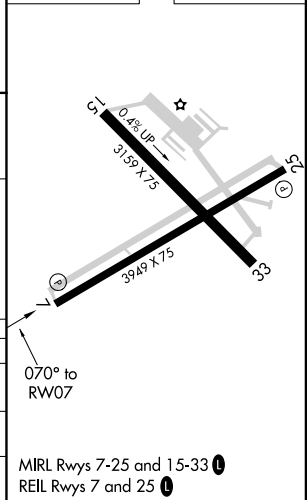
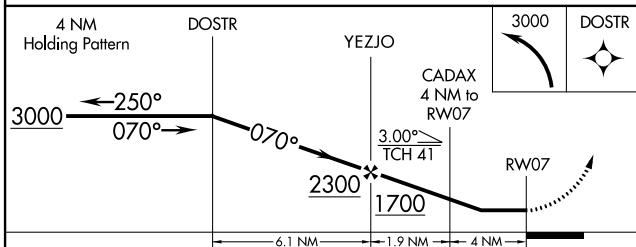
Procedure NA for arrivals at  
PINNA on V30 westbound.



Procedure NA for arrivals at  
FLOAT on V39 southwest bound.

Procedure NA for arrivals at  
KATVE on V457 southwest bound.

ELEV 399	TDZE 390
----------	----------



CATEGORY	A	B	C	D
LP MDA	800-1	410 (500-1)	800-1½ 410 (500-1½)	NA
LNAV MDA	1040-1	650 (700-1)	1040-1½ 650 (700-1½)	NA
CIRCLING	1040-1	641 (700-1)	1040-1½ 641 (700-1½)	NA

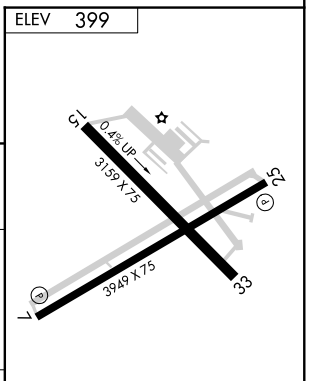
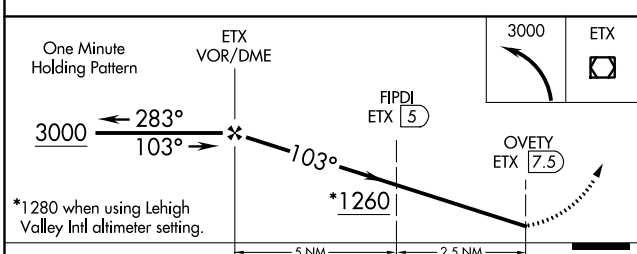
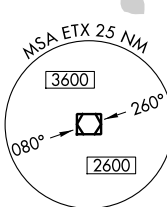
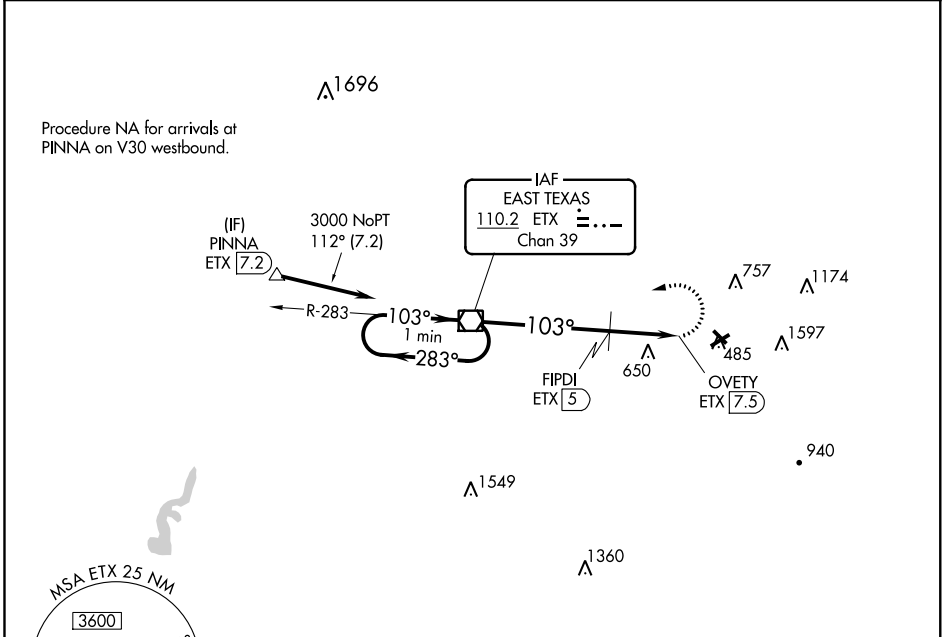
VOR/DME ETX <b>110.2</b> Chan <b>39</b>	APP CRS <b>103°</b>	Rwy Idg TDZE Apt Elev	<b>N/A</b> <b>N/A</b> <b>399</b>
---	------------------------	-----------------------------	--

**VOR-B**  
ALLENTOWN QUEEN CITY MUNI (XLL)

**⚠** Night landing: Rwy 15, 25, 33 NA at night. When local altimeter setting not received, use Lehigh Valley Intl altimeter setting and increase all MDA 20 feet; increase Circling Cat C visibility ¼ mile. Circling NA south of Rws 7 and 25.

**⚠** MISSED APPROACH: Climbing left turn to 3000 direct ETX VOR/DME and hold.

AWOS-3 <b>127.875</b>	ALLENTOWN APP CON <b>119.65 124.45 351.8</b>	CLNC DEL <b>118.9</b>	UNICOM <b>122.7 (CTAF) ①</b>
--------------------------	---	--------------------------	---------------------------------



CATEGORY	A	B	C	D
CIRCLING	1260-1½	861 (900-1½)	1260-2½ 861 (900-2½)	NA
FIPDI FIX MINIMUMS				
CIRCLING	1000-1½	601 (700-1½)	1000-1¾ 601 (700-1¾)	NA

MIRL Rws 7-25 and 15-33 ①					
REIL Rws 7 and 25 ①					
FAF to MAP 7.5 NM					
Knots	60	90	120	150	180
Min:Sec	7:30	5:00	3:45	3:00	2:30

NE-4, 04 JAN 2018 to 01 FEB 2018

NE-4, 04 JAN 2018 to 01 FEB 2018