

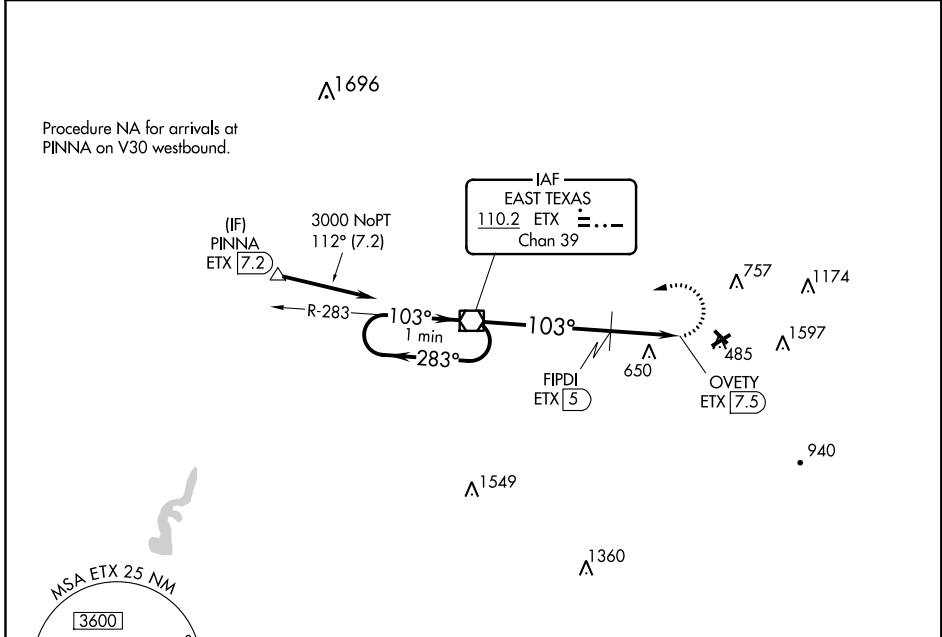
VOR/DME ETX 110.2 Chan 39	APP CRS 103°	Rwy Idg TDZE Apt Elev N/A N/A 399
---	------------------------	---

VOR-B
ALLENTOWN QUEEN CITY MUNI (XLL)

⚠ Night landing: Rwy 15, 25, 33 NA at night. When local altimeter setting not received, use Lehigh Valley Intl altimeter setting and increase all MDA 20 feet; increase Circling Cat C visibility ¼ mile. Circling NA south of Rws 7 and 25.

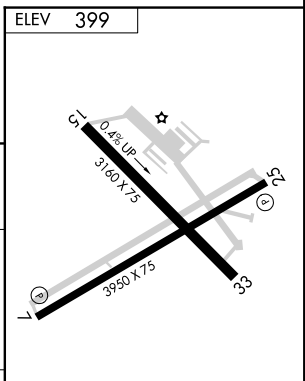
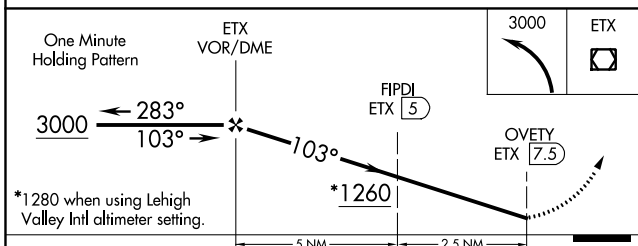
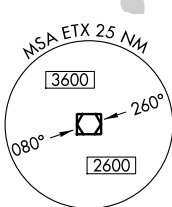
⚠ MISSED APPROACH: Climbing left turn to 3000 direct ETX VOR/DME and hold.

AWOS-3 127.875	ALLENTOWN APP CON 119.65 124.45 351.8	CLNC DEL 118.9	UNICOM 122.7 (CTAF) ①
--------------------------	---	--------------------------	---------------------------------



NE-4, 24 MAY 2018 to 21 JUN 2018

NE-4, 24 MAY 2018 to 21 JUN 2018



CATEGORY	A	B	C	D
CIRCLING	1260-1½	861 (900-1½)	1260-2½ 861 (900-2½)	NA
FIPDI FIX MINIMUMS				
CIRCLING	1000-1½	601 (700-1½)	1000-1¾ 601 (700-1¾)	NA

MIRL Rws 7-25 and 15-33 ①

REIL Rws 7 and 25 ①

		FAF to MAP 7.5 NM				
Knots	60	90	120	150	180	
Min:Sec	7:30	5:00	3:45	3:00	2:30	

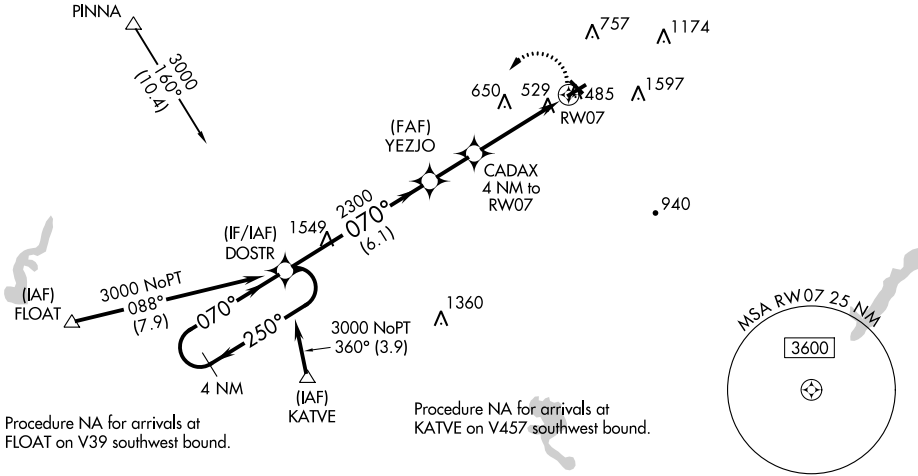
WAAS CH 61224 W07A	APP CRS 070°	Rwy Idg TDZE Apt Elev	3950 390 399
--	------------------------	-----------------------------	---

RNAV (GPS) RWY 7
ALLENTOWN QUEEN CITY MUNI (XLL)

<p>⚠ Circling NA south of Rws 7 and 25. DME/DME RNP-0.3 NA. When local altimeter setting not received, use Lehigh Valley Intl altimeter setting and increase all MDA 20 feet and increase LP Cat C visibility to 1½. Night landing Rwy 15, 25, 33 NA at night.</p>			<p>MISSED APPROACH: Climbing left turn to 3000 direct DOSTR and hold.</p>
AWOS-3 127.875	ALLENTOWN APP CON 119.65 124.45 351.8	CLNC DEL 118.9	UNICOM 122.7 (CTAF) 0

• 1674

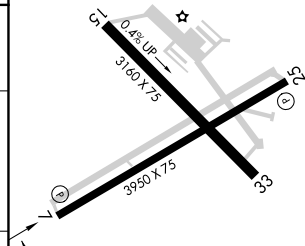
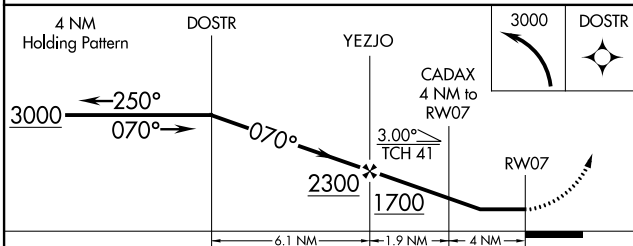
Procedure NA for arrivals at
PINNA on V30 westbound.



Procedure NA for arrivals at
FLOAT on V39 southwest bound.

Procedure NA for arrivals at
KATVE on V457 southwest bound.

ELEV 399	TDZE 390
----------	----------



CATEGORY	A	B	C	D
LP MDA	800-1	410 (500-1)	800-1½ 410 (500-1½)	NA
LNAV MDA	1040-1	650 (700-1)	1040-1½ 650 (700-1½)	NA
CIRCLING	1040-1	641 (700-1)	1040-1½ 641 (700-1½)	NA

MIRL Rws 7-25 and 15-33 0
REIL Rws 7 and 25 0

NE-4, 24 MAY 2018 to 21 JUN 2018

NE-4, 24 MAY 2018 to 21 JUN 2018

INSTRUMENT APPROACH PROCEDURE CHARTS

A IFR ALTERNATE AIRPORT MINIMUMS

Standard alternate minimums for non-precision approaches and approaches with vertical guidance [NDB, VOR, LOC, TACAN, LDA, SDF, VOR/DME, ASR, RNAV (GPS) or RNAV (RNP)] are 800-2. Standard alternate minimums for precision approaches (ILS, PAR, or GLS) are 600-2. Airports within this geographical area that require alternate minimums other than standard or alternate minimums with restrictions are listed below. NA - means alternate minimums are not authorized due to unmonitored facility, absence of weather reporting service, or lack of adequate navigation coverage. Civil pilots see FAR 91. IFR Alternate Minimums: Ceiling and Visibility Minimums not applicable to USA/USN/USAF. Pilots must review the IFR Alternate Minimums Notes for alternate airfield suitability.

NAME	ALTERNATE MINIMUMS	NAME	ALTERNATE MINIMUMS
ALLENTOWN, PA		BECKLEY, WV	
ALLENTOWN QUEEN		RALEIGH COUNTY	
CITY MUNI (XLL).....	RNAV (GPS) Rwy 7 VOR-B¹	MEMORIAL (BKW).....	ILS or LOC Rwy 19¹ RNAV (GPS) Rwy 12² RNAV (GPS) Rwy 10² RNAV (GPS) Rwy 19² RNAV (GPS) Rwy 28³ VOR Rwy 10²
NA when local weather not available		NA when local weather not available.	
¹ Categories A, B, 900-2; Category C, 900-2½.		¹ ILS, Categories A, B, C, 700-2; Category D, 700-2¼. LOC, Category D, 800-2¼.	
LEHIGH VALLEY		² Category D, 800-2¼.	
INTL (ABE).....	ILS or LOC Rwy 6¹ ILS or LOC Rwy 13² ILS or LOC/DME Rwy 24¹ RNAV (GPS) Rwy 6³ RNAV (GPS) Rwy 13³ RNAV (GPS) Rwy 24³ RNAV (GPS) Rwy 31³ VOR-A³	³ Categories A, B, 900-2; Category C, 900-2½; Category D, 900-2¾.	
¹ LOC, Category C, 800-2¼; Category D, 1300-3.		BEDFORD, PA	
² ILS, LOC, Categories A, B, 900-2; Category C, 900-2½; Category D, 1300-3.		BEDFORD	
³ Category C, 800-2¼; Category D, 1300-3.		COUNTY (HMZ).....	VOR-A
ALTOONA, PA		Categories A, B, 1600-2; Category C, 1600-3; Category D, 1800-3.	
ALTOONA-BLAIR		BLUEFIELD, WV	
COUNTY (AOO).....	ILS or LOC Rwy 21¹ RNAV (GPS) Rwy 21²³ RNAV (GPS) Y Rwy 3²³	MERCER	
¹ ILS, Categories A, B, 800-2; Category C, 1300-3; Category D, 1400-3; LOC, Category C, 1300-3; Category D, 1400-3.		COUNTY (BLF).....	ILS or LOC Rwy 23¹ RNAV (GPS) Rwy 5² RNAV (GPS) Rwy 23³ VOR Rwy 23²
² NA when local weather not available.		NA when local weather not available.	
³ Category D, 1200-3.		¹ ILS, Categories A, B, 700-2; Category C, 800-2; Category D, 800-2¼. LOC, Category D, 800-2¼.	
BRADFORD, PA		² Category D, 800-2¼.	
BRADFORD		³ Category C, 800-2¼; Category D, 800-2½.	
RGNL (BFD).....	RNAV (GPS) Rwy 14 RNAV (GPS) Rwy 32 VOR Rwy 14¹ VOR/DME Rwy 14	BRADFORD, PA	
NA when local weather not available.		BRADFORD	
¹ Category C, 800-2½; Category D, 800-2¾.		RGNL (BFD).....	RNAV (GPS) Rwy 14 RNAV (GPS) Rwy 32 VOR Rwy 14¹ VOR/DME Rwy 14

24 MAY 2018 to 21 JUN 2018

24 MAY 2018 to 21 JUN 2018

NAME ALTERNATE MINIMUMS

BUCKHANNON, WV

UPSHUR COUNTY
RGNL (W22).....RNAV (GPS) Rwy 11
RNAV (GPS) Rwy 29

NA when local weather not available.

BUTLER, PA

PITTSBURGH/BUTLER
RGNL (BTP).....ILS or LOC Rwy 8¹
RNAV (GPS) Rwy 8²
RNAV (GPS) Rwy 26²

¹ILS, Category C, 900-2½; Category D, 900-2¾.
LOC, Category C, 900-2½; Category D, 900-2¾.
²Category C, 900-2½; Category D, 900-2¾.

CHARLESTON, WV

YEAGER (CRW).....ILS or LOC Rwy 23¹
LOC Rwy 5²
RNAV (GPS) Y Rwy 3³
RNAV (GPS) Y Rwy 23²
RNAV (RNP) Z Rwy 5⁴
VOR-A⁵

¹ILS, Categories A, B, C, 700-2; Category D, 700-2¼. LOC, Category D, 800-2¼.
²Category C, 900-2½; Category D, 900-2¾.
³Category C, 800-2¼; Category D, 1000-3.
⁴Categories A, B, C, D, 800-2½.
⁵Category D, 800-2¼.

CLARKSBURG, WV

NORTH CENTRAL
WEST VIRGINIA (CKB).....ILS or LOC Rwy 21¹²
RNAV (GPS) Rwy 3³
RNAV (GPS) Rwy 21³
VOR-A⁴

NA when local weather not available.
¹NA when control tower closed.
²ILS, Category A, 800-2; Category B, 900-2; Categories C, D, 1100-3; LOC, Category B, 900-2; Categories C, D, 1100-3.
³Category B, 900-2; Categories C, D, 1100-3.
⁴Category D, 900-2¾.

CLEARFIELD, PA

CLEARFIELD-
LAWRENCE (FIG).....RNAV (GPS) Rwy 12¹
RNAV (GPS) Rwy 30²

NA when local weather not available.
¹Category C, 800-2¼.
²Category D, 900-2¾.

COATESVILLE, PA

CHESTER COUNTY
G O CARLSON (MQS).....ILS or LOC Rwy 29
RNAV (GPS) Rwy 11
RNAV (GPS) Rwy 29

NA when local weather not available.

NAME ALTERNATE MINIMUMS

DOYLESTOWN, PA

DOYLESTOWN (DYL).....RNAV (GPS) Rwy 5
RNAV (GPS) Rwy 23
VOR/DME Rwy 23

NA when local weather not available.

DUBOIS, PA

DUBOIS RGNL (DUJ).....ILS or LOC Rwy 25
RNAV (GPS) Rwy 7
RNAV (GPS) Rwy 25
VOR/DME Rwy 7

NA when local weather not available.

ELKINS, WV

ELKINS-RANDOLPH COUNTY JENNINGS-
RANDOLPH FIELD (EKN).....LDA-C¹
RNAV (GPS) Rwy 5²
RNAV (GPS) Rwy 23¹
RNAV (GPS)-A³

NA when local weather not available.
¹Categories A, B, 1200-2; Category C, 1800-3; Category D, 2100-3.
²Categories A, B, 1400-2; Category C, 1800-3; Category D, 2100-3.
³Categories A, B, 1700-2; Category C, 1800-3.

ERIE, PA

ERIE INTL/TOM RIDGE
FIELD (ERI).....ILS or LOC Rwy 6¹
ILS or LOC Rwy 24¹²
NDB Rwy 24¹
RNAV (GPS) Rwy 6
RNAV (GPS) Rwy 24

NA when local weather not available.
¹NA when control tower closed.
²ILS, 700-2.

FRANKLIN, PA

VENANGO
RGNL (FKL).....VOR Rwy 21

NA when local weather not available.

24 MAY 2018 to 21 JUN 2018

24 MAY 2018 to 21 JUN 2018

NAME ALTERNATE MINIMUMS

HARRISBURG, PA

CAPITAL CITY (CXY).....**ILS or LOC Rwy 8¹²³**
RNAV (GPS) Rwy 8²⁵
RNAV (GPS) Rwy 26³⁴

¹Categories A, 1000-2; Category B, 1400-2;
Categories C, D, 1400-3.

²NA when control tower closed.

³NA when local weather not available.

⁴Category A, 1200-2, Category B, 1400-2;
Categories C, D, 1400-3.

⁵Category A, 900-2; Category B, 1400-2;
Categories C, D, 1400-3.

HARRISBURG

INTL (MDT).....**ILS or LOC Rwy 13¹**
ILS or LOC Rwy 31²
RNAV (GPS) Rwy 13³
RNAV (GPS) Rwy 31⁴
VOR Rwy 31³

¹Categories C, D, 700-2.

²ILS, 700-2.

³Categories A,B, 900-2; Category C, 900-2½;
Category D, 900-2¾.

⁴Category C, 800-2¼; Category D, 800-2½.

HAZLETON, PA

HAZLETON RGNL (HZL).....**RNAV (GPS) Rwy 10**
RNAV (GPS) Rwy 28

NA when local weather not available.

Category C, 900-2½; Category D, 1000-3.

INDIANA, PA

INDIANA COUNTY/JIMMY STEWARD
FLD (IDI).....**RNAV (GPS) Rwy 11**
RNAV (GPS) Rwy 29

NA when local weather not available.

Categories C, D, 1300-3.

JOHNSTOWN, PA

JOHN MURTHA JOHNSTOWN-CAMBRIA
COUNTY (JST).....**ILS or LOC/DME Rwy 33¹**
VOR Rwy 5²
VOR Rwy 15³
VOR Y Rwy 23⁴
VOR Z Rwy 23⁴

¹ILS, LOC, NA when control tower closed.

²NA when local weather not available.

³Categories A, B, 900-2; Category C,
900-2½; Category D, 900-2¾.

⁴Category D, 800-2¼.

NAME ALTERNATE MINIMUMS

LANCASTER, PA

LANCASTER (LNS).....**ILS or LOC Rwy 8¹²³**
RNAV (GPS) Rwy 8¹²
RNAV (GPS) Rwy 13²
RNAV (GPS) Rwy 26²
RNAV (GPS) Rwy 31²
VOR/DME Rwy 31²⁴
VOR/DME Rwy 8²
VOR/DME Rwy 26²⁴
VOR Rwy 8²⁵
VOR Rwy 31⁴

¹NA when control tower closed.

²NA when local weather not available.

³ILS, Categories A, B, C, 700-2; Category D, 700-
2¼. LOC, Category D, 800-2¼.

⁴Category D, 800-2¼.

⁵Categories A, B, 1000-2; Categories C, D,
1000-3.

LATROBE, PA

ARNOLD PALMER
RGNL (LBE).....**ILS or LOC Rwy 24¹²**
RNAV (GPS) Rwy 6³
RNAV (GPS) Rwy 24³

¹NA when control tower closed.

²LOC, Categories A, B, 1200-2; Categories C, D,
1200-3.

³Category C, 900-2½; Category D, 900-2¾.

LEHIGHTON, PA

JAKE ARNER
MEMORIAL (22N).....**RNAV (GPS) Rwy 8¹**
RNAV (GPS) Rwy 26²

¹Categories A, B, 1100-2.

²Categories A, B, 1000-2.

LEWISBURG, WV

GREENBRIER
VALLEY (LWB).....**ILS or LOC Rwy 4¹²**
RNAV (GPS) Rwy 4¹³
RNAV (GPS) Rwy 22⁴
VOR Rwy 22¹³

¹NA when local weather not available.

²ILS, Category B, 800-2; Category C, 1000-3;
Category D, 1400-3; LOC, Category C, 1000-3;
Category D, 1400-3.

³Category C, 800-2¼; Category D, 1000-3.

⁴Category C, 1000-3; Category D, 1300-2½.

LOGAN, WV

LOGAN
COUNTY (6L4).....**RNAV (GPS) Rwy 6**
RNAV (GPS) Rwy 24

Categories C, 1100-3.

24 MAY 2018 to 21 JUN 2018

24 MAY 2018 to 21 JUN 2018

NAME ALTERNATE MINIMUMS

MARTINSBURG, WV

EASTERN WEST VIRGINIA RGNL/
SHEPHERD FLD (MRB).....**ILS or LOC Rwy 26¹**
RNAV (GPS) Rwy 8²
RNAV (GPS) Rwy 26¹
VOR-A²

NA when local weather not available.
¹Category D, 900-2 $\frac{3}{4}$; Category E, 1600-3.
²Category D, 800-2 $\frac{1}{4}$; Category E, 1600-3.

MEADVILLE, PA

PORT MEADVILLE (GKJ).....**LOC Rwy 25**
RNAV (GPS) Rwy 7
RNAV (GPS) Rwy 25
VOR Rwy 7

NA when local weather not available.
Category B, 900-2; Category C, 900-2 $\frac{1}{2}$; Category D, 900-2 $\frac{3}{4}$.

MORGANTOWN, WV

MORGANTOWN MUNI-WALTER L BILL
HART FIELD (MGW).....**ILS or LOC Rwy 18^{1,2}**
RNAV (GPS) Y Rwy 18¹
RNAV (GPS) Z Rwy 18⁴
RNAV (GPS) Rwy 36¹
VOR-A³

NA when local weather not available.
¹Category D, 900-2 $\frac{3}{4}$.
²NA when control tower closed.
³Categories A, B, 1500-2; Categories C, D, 1500-3.
⁴Category C, 800-2 $\frac{1}{4}$; Category D, 900-2 $\frac{3}{4}$.

MOUNT POCONO, PA

POCONO MOUNTAINS
MUNI (MPO).....**RNAV (GPS) Rwy 5**
RNAV (GPS) Rwy 13
RNAV (GPS) Rwy 31
VOR/DME Rwy 13

NA when local weather not available.
Category D, 800-2 $\frac{1}{2}$.

MUIR AAF (MUI)

FORT INDIANTOWN GAP, PA.....**NDB-A¹**
RNAV (GPS)-B^{2,3}
COPTER NDB Y-289¹
COPTER NDB Z-289¹
COPTER RNAV (GPS) Rwy 25¹

¹NA when control tower closed.
²NA when local weather not available.
³Categories A, B, 1000-2; Category C, 1000-2 $\frac{3}{4}$.

NAME ALTERNATE MINIMUMS

PARKERSBURG, WV

MID-OHIO VALLEY
RGNL (PKB).....**RNAV (GPS) Rwy 3**
RNAV (GPS) Rwy 10¹
RNAV (GPS) Rwy 21
RNAV (GPS) Rwy 28

NA when local weather not available.
¹Categories C, D, 800-2 $\frac{1}{2}$.

PHILADELPHIA, PA

NORTHEAST
PHILADELPHIA (PNE).....**ILS or LOC Rwy 24^{1,2}**
LOC BC Rwy 6¹
RNAV (GPS) Rwy 6
RNAV (GPS) Rwy 15
RNAV (GPS) Rwy 24¹
RNAV (GPS) Rwy 33

NA when local weather not available.
¹NA when control tower closed.
²ILS, Category D, 700-2.

PHILADELPHIA

INTL (PHL).....**ILS or LOC Rwy 9L¹**
ILS Z or LOC Z Rwy 9R²
ILS Z or LOC Rwy 17²
ILS or LOC Rwy 26³
ILS or LOC Rwy 27L⁴
RNAV (GPS) Rwy 27L⁵
RNAV (GPS) Rwy 27R⁵
RNAV (GPS) Rwy 35⁵
RNAV (GPS) Y Rwy 9R⁵

¹ILS, Categories A, B, 800-2; Category C, 800-2 $\frac{1}{4}$; Category D, 800-2 $\frac{1}{2}$. LOC, Category C, 800-2 $\frac{1}{4}$; Category D, 800-2 $\frac{1}{2}$.
²ILS, Categories A, B, C, 800-2; Category D, 800-2 $\frac{1}{4}$. LOC, Category D, 800-2 $\frac{1}{4}$.
³ILS, Categories A, B, C, 700-2.
⁴ILS, Category D, 700-2 $\frac{1}{4}$. LOC, Category D, 800-2 $\frac{1}{4}$.
⁵Category D, 800-2 $\frac{1}{4}$.

WINGS FIELD (LOM).....**RNAV (GPS) Rwy 6**
RNAV (GPS) Rwy 24

NA when local weather not available.

24 MAY 2018 to 21 JUN 2018

24 MAY 2018 to 21 JUN 2018

18144

NAME ALTERNATE MINIMUMS

PITTSBURGH, PA

ALLEGHENY COUNTY (AGC).....**ILS or LOC Rwy 10**
ILS, Category C, 800-2; Category D, 800-2¼. LOC, Category D, 800-2¼.

PITTSBURGH INTL (PIT).....

ILS or LOC Rwy 10L¹
ILS or LOC Rwy 10R²
ILS or LOC Rwy 28L¹
ILS or LOC Rwy 28R¹
ILS or LOC Rwy 32¹
RNAV (GPS) Rwy 10L³
RNAV (GPS) Rwy 14³
RNAV (GPS) Y Rwy 10C³
RNAV (GPS) Y Rwy 10R³
RNAV (GPS) Y Rwy 28C³
RNAV (GPS) Y Rwy 28L³
RNAV (GPS) Y Rwy 28R³
RNAV (GPS) Y Rwy 32³

¹LOC, Category D, 800-2¼, Category E, 800-2½.
²ILS, Category C, 700-2; Category D, 700-2¼. Category E, 700-2½. LOC, Category D, 800-2¼, Category E, 800-2½.
³Category D, 800-2¼.

POINT PLEASANT, WV

MASON COUNTY (3I2).....**RNAV (GPS) Rwy 7¹**
RNAV (GPS) Rwy 25²
NA when local weather not available.
¹Categories A, B, 1300-2; Category C, D, 1300-3.
²Category A, B, 1100-2; Category C, D, 1100-3.

POTTSTOWN, PA

HERITAGE FIELD (PTW).....**LOC Rwy 28**
RNAV (GPS)-A
RNAV (GPS) Rwy 28
VOR/DME-A
NA when local weather not available.

QUAKERTOWN, PA

QUAKERTOWN (UKT).....**RNAV (GPS) Rwy 11**
RNAV (GPS) Rwy 29
NA when local weather not available.

READING, PA

READING RGNL/CARL A. SPAATZ FIELD (RDG).....**ILS or LOC Rwy 13¹³**
ILS or LOC Rwy 36¹³
RNAV (GPS) Rwy 13²
RNAV (GPS) Rwy 18²
RNAV (GPS) Rwy 36²
NA when local weather not available.
¹ILS, Categories A, B, C, 700-2; Category D, 800-2½. LOC, Category D, 800-2½.
²Category D, 800-2½.
³NA when control tower closed.

NAME ALTERNATE MINIMUMS

SELINGROVE, PA

PENN VALLEY (SEG).....**RNAV (GPS) Rwy 17¹**
RNAV (GPS) Rwy 35⁴
VOR-A²³

¹Categories A, B, 1000-2; Category C, 1000-3; Category D, 1200-3.
²NA when local weather not available.
³Categories A, B, 1000-2.
⁴Categories A, B, 1400-2; Categories C, D, 1400-3.

STATE COLLEGE, PA

UNIVERSITY PARK (UNV).....**ILS or LOC Rwy 24**
RNAV (GPS) Rwy 6
RNAV (GPS) Rwy 24
VOR-B¹

NA when local weather not available.
¹Categories A, B, 1600-2; Categories C, D, 1600-3.

WASHINGTON, PA

WASHINGTON COUNTY (AFJ).....**ILS OR LOC Rwy 27³**
RNAV (GPS) Rwy 9¹
RNAV (GPS) Rwy 27²

NA when local weather not available.
¹Category D, 900-2¾.
²Category C, 800-2½, Category D, 900-2¾.
³ILS, Categories A, B, 800-2; Category C, 800-2½; Category D, 900-2¾. LOC, Category C, 800-2½; Category D 900-2¾.

WHEELING, WV

WHEELING OHIO COUNTY (HLG).....**ILS or LOC Rwy 3¹**
RNAV (GPS) Rwy 3²
RNAV (GPS) Rwy 16²
RNAV (GPS) Rwy 21²
RNAV (GPS) Rwy 34²
VOR Rwy 21²

¹ILS, Categories A, B, 700-2; Category C, 800-2; Category D, 800-2¼; LOC, Category D, 800-2¼.
²Category D, 800-2¼.

WILKES-BARRE/SCRANTON, PA

WILKES-BARRE/SCRANTON INTL (AVP).....**ILS or LOC Rwy 4**
ILS or LOC/DME Rwy 22
RNAV (GPS) Rwy 4
RNAV (GPS) Rwy 22
Category A, 900-2; Category B, 1100-2; Category C, 1100-3; Category D, 1400-3.

24 MAY 2018 to 21 JUN 2018

24 MAY 2018 to 21 JUN 2018

18144

M5

18144

NAME ALTERNATE MINIMUMS NAME ALTERNATE MINIMUMS

WILLIAMSPORT, PA

WILLIAMSPORT
RGNL (IPT).....**ILS or LOC Rwy 27**¹²
RNAV (GPS) Rwy 9³
RNAV (GPS) Rwy 12⁴
RNAV (GPS) Rwy 27⁵
RNAV (GPS) Rwy 30⁶

¹NA when local control tower closed.
²ILS, LOC, Categories A, B, 1000-2; Category C, 1400-3; Category D, 1600-3.
³Categories A, B, 1600-2; Category C, 1600-3.
⁴Category A, 900-2; Category B, 1000-2.
⁵Categories A, B, 1800-2; Categories C, D, 1800-3;
⁶Categories A, B, 1500-2.

YORK, PA

YORK (THV).....**RNAV (GPS) Rwy 17**
RNAV (GPS) Rwy 35

NA when local weather not available.
Category C, 800-2¼; Category D, 800-2½.

24 MAY 2018 to 21 JUN 2018

24 MAY 2018 to 21 JUN 2018

18144

M6

TAKEOFF MINIMUMS, (OBSTACLE) DEPARTURE PROCEDURES, AND

18088

DIVERSE VECTOR AREA (RADAR VECTORS)

INSTRUMENT APPROACH PROCEDURE CHARTS



IFR TAKEOFF MINIMUMS AND (OBSTACLE) DEPARTURE PROCEDURES

Civil Airports and Selected Military Airports

ALL USERS: Airports that have Departure Procedures (DPs) designed specifically to assist pilots in avoiding obstacles during the climb to the minimum enroute altitude, and/or airports that have civil IFR takeoff minimums other than standard, are listed below. Takeoff Minimums and Departure Procedures apply to all runways unless otherwise specified. An entry may also be listed that contains only Takeoff Obstacle Notes. Altitudes, unless otherwise indicated, are minimum altitudes in MSL.

DPs specifically designed for obstacle avoidance are referred to as Obstacle Departure Procedures (ODPs) and are textually described below, or published separately as a graphic procedure. If the ODP is published as a graphic procedure, its name will be listed below, and it can be found in either this volume (civil), or the applicable military volume, as appropriate. Users will recognize graphic obstacle DPs by the term "(OBSTACLE)" included in the procedure title; e.g., TETON TWO (OBSTACLE). If not specifically assigned an ODP, SID, or radar vector as part of an IFR clearance, an ODP may be required to be flown for obstacle clearance, even though not specifically stated in the IFR clearance. When doing so in this manner, ATC should be informed when the ODP being used contains a specified route to be flown, restrictions before turning, and/or altitude restrictions.

Some ODPs, which are established solely for obstacle avoidance, require a climb in visual conditions to cross the airport, a fix, or a NAVAID in a specified direction, at or above a specified altitude. These procedures are called Visual Climb Over Airport (VCOA). To ensure safe and efficient operations, the pilot must verbally request approval from ATC to fly the VCOA when requesting their IFR clearance.

At some locations where an ODP has been established, a diverse vector area (DVA) may be created to allow radar vectors to be used in lieu of an ODP. DVA information will state that headings will be as assigned by ATC and climb gradients, when applicable, will be published immediately following the specified departure procedure.

Graphic DPs designed by ATC to standardize traffic flows, ensure aircraft separation and enhance capacity are referred to as "Standard Instrument Departures (SIDs)". SIDs also provide obstacle clearance and are published under the appropriate airport section. ATC clearance must be received prior to flying a SID.

CIVIL USERS NOTE: Title 14 Code of Federal Regulations Part 91 prescribes standard takeoff rules and establishes takeoff minimums for certain operators as follows: (1) For aircraft, other than helicopters, having two engines or less – one statute mile visibility. (2) For aircraft having more than two engines – one-half statute mile visibility. (3) For helicopters – one-half statute mile visibility. These standard minima apply in the absence of any different minima listed below.

MILITARY USERS NOTE: Civil (nonstandard) takeoff minima are published below. For military takeoff minima, refer to appropriate service directives.

NAME	TAKEOFF MINIMUMS	NAME	TAKEOFF MINIMUMS
------	------------------	------	------------------

ALLENTOWN, PA

ALLENTOWN QUEEN CITY MUNI (XLL)

TAKEOFF MINIMUMS AND (OBSTACLE)

DEPARTURE PROCEDURES

AMDT 3 11069 (FAA)

TAKEOFF MINIMUMS: **Rwy 7**, std. w/min. climb of 380' per NM to 2600 or 1600-2½ for climb in visual conditions. **Rwy 15**, NA.

DEPARTURE PROCEDURE: **Rwy 7**, climb heading 070° to 1800 before turning right, or for climb in visual conditions: cross Allentown Queen City Muni Airport at or above 1900 before proceeding on course. **Rwy 25**, climbing right turn direct ETX VOR/DME. **Rwy 33**, climbing left turn direct ETX VOR/DME.

TAKEOFF OBSTACLE NOTES: **Rwy 7**, poles beginning 55' from DER, 322' right of centerline, up to 25' AGL/415' MSL. **Rwy 25**, fence, trees, and poles beginning 56' from DER, 47' left of centerline, up to 100' AGL/529' MSL. Trees beginning 294' from DER, 78' right of centerline, up to 100' AGL/452' MSL.

LEHIGH VALLEY INTL (ABE)

TAKEOFF MINIMUMS AND (OBSTACLE)

DEPARTURE PROCEDURES

TAKEOFF MINIMUMS: **Rwy 13**, 800-1 or std. with a min. climb of 270' per NM to 1600'.

DEPARTURE PROCEDURE: **Rwy 13**, climb runway heading to 1600 before proceeding on course. **Rwy 24**, climb runway heading to 1600 before proceeding southbound on course.

TAKEOFF MINIMUMS, (OBSTACLE) DEPARTURE PROCEDURES, AND

18088

DIVERSE VECTOR AREA (RADAR VECTORS)

NE-4

24 MAY 2018 to 21 JUN 2018

24 MAY 2018 to 21 JUN 2018

**TAKEOFF MINIMUMS, (OBSTACLE) DEPARTURE PROCEDURES, AND
DIVERSE VECTOR AREA (RADAR VECTORS)**

18088

ALTOONA, PA

ALTOONA-BLAIR COUNTY (AOO)
TAKEOFF MINIMUMS AND (OBSTACLE)
DEPARTURE PROCEDURES
AMDT 5 17341 (FAA)

TAKEOFF MINIMUMS: **Rwy 3**, std. w/ min. climb of 270' per NM to 2800 or 1600-3 for climb in visual conditions. **Rwy 12**, NA-obstacles. **Rwy 21**, std. w/ min. climb of 394' per NM to 3200 or 1600-3 for climb in visual conditions. **Rwy 30**, std. w/ min. climb of 250' per NM to 3600 or 1600-3 for climb in visual conditions. **Note:** climb in visual conditions NA at night.
DEPARTURE PROCEDURE: **Rwy 3**, Climb heading 026° to 2800 before proceeding on course. **Rwy 21**, Climb heading 206° to 3200 before proceeding on course. **Rwy 30**, Climb heading 298° to 3600 before proceeding on course.

VCOA: Obtain ATC approval for VCOA when requesting IFR clearance. Climb in visual conditions to cross Altoona-Blair County Airport at or above 3000 before proceeding on course.

TAKEOFF OBSTACLE NOTES: **Rwy 3**, tree 60' from DER, 449' left of centerline, 1476' MSL. Pole 1124' from DER, 742' left of centerline, 50' AGL/1502' MSL. Trees beginning 1538' from DER, 563' left of centerline, up to 1541' MSL. Tree 3130' from DER, 594' left of centerline, 1554' MSL. Tree 4577' from DER, 844' right of centerline, 1584' MSL. Tree 4754' from DER, 827' right of centerline, 1598' MSL. Tree 5619' from DER, 1199' right of centerline, 1619' MSL. Trees beginning 5762' from DER, 1364' right of centerline, up to 1646' MSL. Tree 1 NM from DER, 1119' right of centerline, 1648' MSL. Trees beginning 1.1 NM from DER, 1129' right of centerline, up to 1658' MSL. Trees 1.4 NM from DER, 1628' right of centerline, 200' AGL/1759' MSL. **Rwy 21**, tree 30' from DER, 422' left of centerline, 1525' MSL. Fence 33' from DER, 249' right of centerline, 4' AGL/1505' MSL. Tree, fence beginning 50' from DER, 319' left of centerline, up to 1526' MSL. Tree 137' from DER, 371' left of centerline, 1528' MSL. Pole, terrain, tree beginning 183' from DER, 265' left of centerline, up to 22' AGL/1536' MSL. Tree 881' from DER, 516' right of centerline, 1546' MSL. Trees beginning 1077' from DER, 43' right of centerline, up to 1549' MSL. Trees beginning 1249' from DER, 557' left of centerline, up to 1557' MSL. Trees beginning 1273' from DER, 225' left of centerline, up to 1561' MSL. Trees beginning 1774' from DER, 327' left of centerline, up to 1566' MSL. Trees beginning 1857' from DER, 277' left of centerline, up to 1570' MSL. Trees beginning 1923' from DER, 181' left of centerline, up to 1573' MSL. Trees beginning 2174' from DER, 244' left of centerline, up to 1582' MSL. Trees beginning 2532' from DER, 196' left of centerline, up to 1596' MSL. Trees beginning 2916' from DER, 242' left of centerline, up to 1610' MSL. **Rwy 30**, tree 84' from DER, 257' right of centerline, 1480' MSL. Tree 92' from DER, 102' left of centerline, 1479' MSL. Tree 978' from DER, 316' right of centerline, 1499' MSL.

BEAVER FALLS, PA

BEAVER COUNTY (BVI)
TAKEOFF MINIMUMS AND (OBSTACLE)
DEPARTURE PROCEDURES
AMDT 2 11069 (FAA)

TAKEOFF OBSTACLE NOTES: **Rwy 10**, trees beginning 67' from DER, left and right of centerline, up to 64' AGL/1317' MSL. Fences beginning 124' from DER, 392' left of centerline, up to 10' AGL/1273' MSL. Bush 326' from DER, 136' right of centerline, 17' AGL/1270' MSL. Obstruction light on localizer 398' from DER, on centerline, 10' AGL/1263' MSL. **Rwy 28**, trees beginning 35' from DER, left and right of centerline, up to 100' AGL/1319' MSL. Vegetation beginning 4' from DER, left and right of centerline, up to 33' AGL/1212' MSL. Bush 173' from DER, 163' right of centerline, 34' AGL/1213' MSL.

BECKLEY, WV

RALEIGH COUNTY MEMORIAL (BKW)
TAKEOFF MINIMUMS AND (OBSTACLE)
DEPARTURE PROCEDURES
AMDT 5 11321 (FAA)

TAKEOFF MINIMUMS: **Rwy 10**, 400-2/4 w/min. climb of 350' per NM to 3400, or 1100-3 for climb in visual conditions. **Rwy 28**, 300-1/4 or std. w/min. climb of 261' per NM to 4000.

DEPARTURE PROCEDURE: **Rwy 1**, climbing left turn heading 350° to 4400 before proceeding on course. **Rwy 10**, climbing left turn heading 350° to 4700 before proceeding on course, or for climb in visual conditions: cross Raleigh County Memorial at or above 3500 before proceeding on course. **Rwy 19**, climbing right turn heading 330° to 4400 before proceeding on course. **Rwy 28**, climbing right turn heading 320° to 4400 before proceeding on course.

TAKEOFF OBSTACLE NOTES: **Rwy 1**, trees and terrain beginning 26' from DER, left and right of centerline, up to 100' AGL/2524' MSL. Pole 718' from DER, 585' right of centerline, 2467' MSL. **Rwy 10**, trees and terrain beginning 22' from DER, left and right of centerline, up to 100' AGL/2651' MSL. Bush 32' from DER, 159' right of centerline, 20' AGL/2514' MSL. Pole 118' from DER, 234' left of centerline, 26' AGL/2510' MSL. **Rwy 19**, trees and terrain beginning 121' from DER, left and right of centerline, up to 100' AGL/2635' MSL. **Rwy 28**, trees and bushes beginning 5' from DER, left and right of centerline, up to 100' AGL/2521' MSL.

24 MAY 2018 to 21 JUN 2018

24 MAY 2018 to 21 JUN 2018

**TAKEOFF MINIMUMS, (OBSTACLE) DEPARTURE PROCEDURES, AND
DIVERSE VECTOR AREA (RADAR VECTORS)**

18088

NE-4

**TAKEOFF MINIMUMS, (OBSTACLE) DEPARTURE PROCEDURES, AND
DIVERSE VECTOR AREA (RADAR VECTORS)**

18088

BEDFORD, PA

BEDFORD COUNTY (HMZ)

TAKEOFF MINIMUMS AND (OBSTACLE)
DEPARTURE PROCEDURES

AMDT 1 11097 (FAA)

TAKEOFF MINIMUMS: **Rwy 14**, std. w/ min. climb of 549' per NM to 2300 or 300-1 w/ min. climb of 369' per NM to 2600 or 2200-3 for climb in visual conditions.**Rwy 32**, std. w/ min. climb of 403' per NM to 2500 or 500-2½ w/ min. climb of 301' per NM to 3700 or 2200-3 for climb in visual conditions.DEPARTURE PROCEDURE: **Rwy 14**, climb heading 137° to 2800 before proceeding on course. For climb in visual conditions: cross Bedford County Airport at or above 3200' MSL before proceeding on course. **Rwy 32**, climb heading 317° to 2600 before proceeding on course. For climb in visual conditions: cross Bedford County airport at or above 3200' MSL before proceeding on course.TAKEOFF OBSTACLE NOTES: **Rwy 14**, terrain, fence, vehicles on road, and trees beginning 33' from DER, 483' right of centerline, up to 44' AGL/1193' MSL.Trees 3794' from DER, 1468' left of centerline, up to 70' AGL/1429' MSL. Trees 4967' from DER, 1607' right of centerline, up to 97' AGL/1376' MSL. **Rwy 32**,

terrain, bush, and trees beginning 22' from DER, 383' left of centerline, up to 88' AGL/1307' MSL. Trees

3377' from DER, 1253' left of centerline, up to 71' AGL/1330' MSL. Trees 1.7 NM from DER, 3309' left of centerline, up to 65' AGL/1564' MSL. Trees 1.9 NM

from DER, 2221' left of centerline, up to 67' AGL/1476' MSL.

BELLEFONTE, PA

BELLEFONTE (N96)

TAKEOFF MINIMUMS AND (OBSTACLE)
DEPARTURE PROCEDURES

AMDT 1 13262 (FAA)

TAKEOFF MINIMUMS: **Rwy 25**, std. w/min. climb of 267' per NM to 2600, or 1700-3 for climb in visual conditions.DEPARTURE PROCEDURE: **Rwy 7**, Climb heading 074° to 2900' before proceeding on course. **Rwy 25**, climb heading 246° to 2600 before proceeding on course or for climb in visual conditions, cross Bellefonte airport at or above 2600 before proceeding on course. When executing VCOA, notify ATC prior to departure.TAKEOFF OBSTACLE NOTES: **Rwy 7**, buildings beginning 42' from DER, 293' left of centerline, up to 15' AGL/1062' MSL. Tree 130' from DER, 365' left of centerline, 28' AGL/1075' MSL. Pole 135' from DER, 516' right of centerline, 30' AGL/ 1080' MSL. Buildings beginning 86' from DER, 340' right of centerline, up to 17' AGL/1084' MSL. Tree 134' from DER, 286' right of centerline, 42' AGL/1096' MSL. Pole 75' from DER, 433' right of centerline, 33' AGL/1096' MSL. Trees beginning 731' from DER, 432' left of centerline, up to 108' AGL/1139' MSL. Tree 231' from DER, 448' right of centerline, 60' AGL/1110' MSL. **Rwy 25**, trees beginning 59' from DER, 373' right of centerline, up to 89' AGL/1143' MSL. Pole 67' from DER, 172' right of centerline 26' AGL/1080' MSL. Poles beginning 89' from DER, 277' left of centerline, up to 26' AGL/1096' MSL. Buildings beginning 92' from DER, 524' left of centerline, 30' AGL/1112' MSL. Trees beginning 190' from DER, 236' right of centerline, up to 80' AGL/1126' MSL. Vehicle or road 351' from DER, 169' left of centerline, 15' AGL/1093' MSL. Buildings beginning 449' from DER, 527' left of centerline, 30' AGL/1113' MSL. Trees beginning 398' from DER, 199' right of centerline, up to 84' AGL/1111' MSL. Trees 538' from DER, 633' left of centerline, up to 60' AGL/1143' MSL. Vehicle on road 757' from DER, 670' left of centerline, 15' AGL/1102' MSL. Trees beginning 760' from DER, 146' right of centerline, up to 52' AGL/1100' MSL. Buildings beginning 1075' from DER, 550' left of centerline, up to 30' AGL/1112' MSL. Trees beginning 1375' from DER, 697' left of centerline, up to 77' AGL/1150' MSL. Trees beginning 2277' from DER, 319' left of centerline, up to 65' AGL/1178' MSL. Trees beginning 2394' from DER, 35' right of centerline, up to 97' AGL/ 1137' MSL. Trees beginning 3737' from DER 187' left of centerline, up to 61' AGL/1201' MSL.**BERKELEY SPRINGS, WV**

POTOMAC AIRPARK (W35)

TAKEOFF MINIMUMS AND (OBSTACLE)
DEPARTURE PROCEDURES

AMDT 1 99308 (FAA)

TAKEOFF MINIMUMS: **Rwys 11,29**, 1900-2 or std. with a min. climb of 400' per NM to 2600.DEPARTURE PROCEDURE: **Rwy 11**, climb to 4000 via heading 095° and HGR R-275 to HGR VOR before proceeding on course. **Rwy 29**, climb to 1500 then climbing left turn to 5000 via heading 267° and GRV R-092 before proceeding on course.

24 MAY 2018 to 21 JUN 2018

24 MAY 2018 to 21 JUN 2018

**TAKEOFF MINIMUMS, (OBSTACLE) DEPARTURE PROCEDURES, AND
DIVERSE VECTOR AREA (RADAR VECTORS)**

18088

NE-4

**TAKEOFF MINIMUMS, (OBSTACLE) DEPARTURE PROCEDURES, AND
DIVERSE VECTOR AREA (RADAR VECTORS)**

18088

BLOOMSBURG, PA

BLOOMSBURG MUNI (N13)

TAKEOFF MINIMUMS AND (OBSTACLE)
DEPARTURE PROCEDURES

AMDT 2 16119 (FAA)

TAKEOFF MINIMUMS: **Rwy 9**, std. w/min. climb of 660' per NM to 1400 or 2100-3 for climb in visual conditions. **Rwy 27**, std. w/min. climb of 300' per NM to 1400 or 2100-3 for climb in visual conditions.

DEPARTURE PROCEDURE: **Rwy 9**, Climbing left turn heading 059° to 2200 before proceeding on course. Do not exceed 180 KIAS until established on 059° heading. **Rwy 27**, Climb heading 254° to 2200 before proceeding on course.

TAKEOFF OBSTACLE NOTES: **Rwy 9**, Trees beginning 51' from DER, 6' right of centerline, up to 642' MSL.

Trees beginning 475' from DER, 24' left of centerline, up to 599' MSL. Grd 64' from DER, 34' right of centerline, 487' MSL. Vehicle on road 176' from DER, 112' right of centerline, 15' AGL/488' MSL. Poles beginning 191' from DER, 432' left of centerline, up to 44' AGL/528' MSL. Building 335' from DER, 568' left of centerline, 501' MSL. Parking lots beginning 629' from DER, 652' left of centerline, up to 503' MSL. Terrain 1503' from DER, 164' right of centerline, 524' MSL.

Rwy 27, tower 4520' from DER, 596' right of centerline, 150' AGL/632' MSL. Buildings beginning 35' from DER, 327' left of centerline, up to 506' MSL. Vehicles in parking lots beginning 48' from DER, 238' right of centerline, up to 496' MSL. Pole 151' from DER, 238' right of centerline, 8' AGL/499' MSL. Poles beginning 210' from DER, 493' left of centerline, up to 521' MSL. Vehicle on road 279' from DER, 210' right of centerline, 15' AGL/494' MSL. Trees beginning 50' from DER, 50' left of centerline, up to 579' MSL. Trees beginning 559' from DER, 96' right of centerline, up to 566' MSL. Stack 5202' from DER, 660' right of centerline, 175' AGL/661' MSL. Chimney/smokestack 5199' from DER, 661' right of centerline, 659' MSL.

BLUEFIELD, WV

MERCER COUNTY (BLF)

TAKEOFF MINIMUMS AND (OBSTACLE)
DEPARTURE PROCEDURES

AMDT 4 09015 (FAA)

TAKEOFF MINIMUMS: **Rwy 23**, 400-2¼ or std. with a min. climb of 238' per NM to 3300.

DEPARTURE PROCEDURE: **Rwy 5**, climb heading 049° to 3900 before turning south. **Rwy 23**, climbing right turn via BLF R-270 to 4500 before proceeding on course.

TAKEOFF OBSTACLE NOTES: **Rwy 5**, trees beginning 14' from DER, 370' left of centerline, up to 100' AGL/2939' MSL. Trees beginning 15' from DER, 391' right of centerline, up to 100' AGL/2959' MSL. **Rwy 23**, trees beginning at DER, 258' left of centerline, up to 100' AGL/2939' MSL. Trees beginning 140' from DER, 74' right of centerline, up to 100' AGL/3159' MSL.

BRADFORD, PA

BRADFORD RGNL (BFD)

TAKEOFF MINIMUMS AND (OBSTACLE)
DEPARTURE PROCEDURES

TAKEOFF OBSTACLE NOTES: **Rwy 5**, fence 448' from DER, 305' left of centerline, 19' AGL/2158' MSL. Fence 462' from DER, 299' right of centerline, 19' AGL/2158' MSL. Trees beginning 234' from DER, 70' left of centerline, up to 75' AGL/2242' MSL. Trees beginning 67' from DER, 227' right of centerline, up to 87' AGL/2226' MSL. **Rwy 14**, trees beginning 26' from DER, 263' left of centerline, up to 16' AGL/2115' MSL. Tree 2427' from DER, 918' right of centerline, 79' AGL/2198' MSL. **Rwy 23**, trees beginning 53' from DER, 145' left of centerline, up to 82' AGL/2240' MSL. Trees beginning 272' from DER, 220' right of centerline, up to 86' AGL/2225' MSL. **Rwy 32**, trees beginning 1018' from DER, 399' left of centerline, up to 102' AGL/2169' MSL. Trees beginning 138' from DER, 292' right of centerline, up to 86' AGL/2205' MSL.

BUCKHANNON, WV

UPSHUR COUNTY RGNL (W22)

TAKEOFF MINIMUMS AND (OBSTACLE)
DEPARTURE PROCEDURES

ORIG 04162 (FAA)

TAKEOFF MINIMUMS: **Rwy 29**, 400-1¼ or std. with a min. climb of 420' per NM to 2100.

DEPARTURE PROCEDURE: **Rwy 11**, climb via heading 105° to 2300 before proceeding on course.

TAKEOFF OBSTACLE NOTES: **Rwy 11**, trees 798' from DER, 179' right of centerline, 100' AGL/1679' MSL. Trees 2665' from DER, 842' left of centerline, 100' AGL/1719' MSL. Trees 4799' from DER, 1724' right of centerline, 100' AGL/1779' MSL. **Rwy 29**, trees 1 NM from DER, 565' right of centerline, 100' AGL/1959' MSL.

24 MAY 2018 to 21 JUN 2018

24 MAY 2018 to 21 JUN 2018

**TAKEOFF MINIMUMS, (OBSTACLE) DEPARTURE PROCEDURES, AND
DIVERSE VECTOR AREA (RADAR VECTORS)**

18088

NE-4

**TAKEOFF MINIMUMS, (OBSTACLE) DEPARTURE PROCEDURES, AND
DIVERSE VECTOR AREA (RADAR VECTORS)**

18088

BUTLER, PA

PITTSBURGH/BUTLER RGNL (BTP)
TAKEOFF MINIMUMS AND (OBSTACLE)
DEPARTURE PROCEDURES
AMDT 4 17341 (FAA)

TAKEOFF MINIMUMS: **Rwy 8**, 300-1 or std. w/min. climb of 461' per NM to 1600.

TAKEOFF OBSTACLE NOTES: **Rwy 8**, tree 18' from DER, 218' right of centerline, 1265' MSL. Pole 68' from DER, 469' left of centerline, 24' AGL/1245' MSL. Tree 99' from DER, 478' left of centerline, 1246' MSL. Tree 147' from DER, 441' right of centerline, 1278' MSL. Pole 183' from DER, 372' left of centerline, 36' AGL/1248' MSL. Trees beginning 196' from DER, 69' left of centerline, up to 1270' MSL. Trees beginning 202' from DER, 327' right of centerline, up to 1285' MSL. Trees beginning 343' from DER, 13' right of centerline, up to 1288' MSL. Trees beginning 748' from DER, 26' left of centerline, up to 1278' MSL. Trees beginning 977' from DER, 391' left of centerline, up to 1281' MSL. Trees beginning 1056' from DER, 15' left of centerline, up to 1302' MSL. Trees beginning 1197' from DER, 288' left of centerline, up to 1319' MSL. Trees beginning 1231' from DER, 167' left of centerline, up to 1325' MSL. Trees beginning 1326' from DER, 167' right of centerline, up to 1302' MSL. Trees beginning 1422' from DER, 282' right of centerline, up to 1310' MSL. Trees beginning 2359' from DER, 325' right of centerline, up to 1316' MSL. Trees beginning 2423' from DER, 658' left of centerline, up to 1350' MSL. Tree 2532' from DER, 435' right of centerline, 1330' MSL. Trees beginning 2554' from DER, 389' right of centerline, up to 1337' MSL. Trees beginning 2626' from DER, 106' left of centerline, up to 1352' MSL. Trees beginning 2704' from DER, 393' right of centerline, up to 1347' MSL. Trees beginning 2935' from DER, 733' right of centerline, up to 1354' MSL. Trees beginning 3471' from DER, 626' right of centerline, up to 1357' MSL. Tree 3721' from DER, 601' right of centerline, 1359' MSL. Trees beginning 3771' from DER, 516' right of centerline, up to 1373' MSL. Tree 3810' from DER, 647' right of centerline, 1377' MSL. Trees beginning 3827' from DER, 411' right of centerline, up to 1404' MSL. Trees beginning 4118' from DER, 893' right of centerline, up to 1445' MSL. Trees beginning 4173' from DER, 417' right of centerline, up to 1482' MSL. Tree 4255' from DER, 1554' right of centerline, 1488' MSL. Trees beginning 4256' from DER, 708' right of centerline, up to 1491' MSL. Trees beginning 4641' from DER, 1460' right of centerline, up to 1399' MSL. **Rwy 26**, general utility 13' from DER, 117' right of centerline, 3' AGL/1229' MSL. Trees beginning 1001' from DER, 282' left of centerline, up to 1280' MSL. Tree 1756' from DER, 432' left of centerline, 1287' MSL. Tree 3239' from DER, 54' left of centerline, 1309' MSL. Tree 3357' from DER, 32' right of centerline, 1314' MSL.

CARLISLE, PA

CARLISLE (N94)
TAKEOFF MINIMUMS AND (OBSTACLE)
DEPARTURE PROCEDURES
AMDT 2 14065 (FAA)

DEPARTURE PROCEDURE: **Rwy 10**, climb heading 102° to 1400 before turning right. **Rwy 28**, climb heading 282° to 1900 before proceeding on course.

TAKEOFF OBSTACLE NOTES: **Rwy 10**, vehicles on road, beginning 14' from DER, left and right of centerline, up to 15' AGL/534' MSL. Poles beginning 196' from DER, left and right of centerline, up to 30' AGL/550' MSL. Building 351' from DER, 121' left of centerline, 25' AGL/535' MSL. **Rwy 28**, vehicles on road, abeam DER, 336' right of centerline, up to 15' AGL/524' MSL. Trees 322' from DER, 96' right of centerline, up to 100' AGL/609' MSL. Trees 2484' from DER, 439' left of centerline, up to 100' AGL/609' MSL.

CHAMBERSBURG, PA

FRANKLIN COUNTY RGNL (N68)
TAKEOFF MINIMUMS AND (OBSTACLE)
DEPARTURE PROCEDURES
AMDT 3A 14317 (FAA)

TAKEOFF MINIMUMS: **Rwy 24**, 700-1 or std. with a min. climb of 220' per NM to 1400.

DEPARTURE PROCEDURE: **Rwy 6**, climbing left turn to 4000 outbound via HGR VOR R-037 before proceeding on course. Do not exceed 200 KIAS until established on the HGR R-037 southwest bound. **Rwy 24**, climbing left turn to 4000 outbound via HGR VOR R-037 before proceeding on course.

CHARLESTON, WV

YEAGER (CRW)
TAKEOFF MINIMUMS AND (OBSTACLE)
DEPARTURE PROCEDURES
AMDT 9 16035 (FAA)

TAKEOFF MINIMUMS: **Rwy 5**, 400-2/4 or std. w/min. climb of 240' per NM to 1400.

DEPARTURE PROCEDURE: **Rwy 23**, climb heading 233° to 1400 before turning left.

TAKEOFF OBSTACLE NOTES: **Rwy 5**, trees beginning 3781' from DER, 736' left of centerline, up to 150' AGL/1217' MSL. Tree 5848' from DER, 1055' right of centerline, 104' AGL/1062' MSL. Tower 1.9 NM from DER, 2764' left of centerline, 184' AGL/1235' MSL.

CLARION, PA

CLARION COUNTY (AXQ)
TAKEOFF MINIMUMS AND (OBSTACLE)
DEPARTURE PROCEDURES

TAKEOFF MINIMUMS: **Rwy 24**, 200-1/2 or std. w/ min. climb of 211' per NM to 1700.

TAKEOFF OBSTACLE NOTES: **Rwy 6**, multiple trees beginning 697' from DER, 311' left of centerline, up to 100' AGL/1519' MSL. Multiple trees beginning 1006' from DER, 47' right of centerline, up to 100' AGL/1529' MSL. Building 2942' from DER, 964' right of centerline, 60' AGL/1539' MSL. **Rwy 24**, multiple trees beginning 792' from DER, 27' left of centerline, up to 100' AGL/1539' MSL. Multiple trees beginning 806' from DER, 147' right of centerline, up to 100' AGL/1539' MSL. Tree 1.1 NM from DER, 2010' right of centerline, 100' AGL/1619' MSL.

24 MAY 2018 to 21 JUN 2018

24 MAY 2018 to 21 JUN 2018

**TAKEOFF MINIMUMS, (OBSTACLE) DEPARTURE PROCEDURES, AND
DIVERSE VECTOR AREA (RADAR VECTORS)**

18088

NE-4

**TAKEOFF MINIMUMS, (OBSTACLE) DEPARTURE PROCEDURES, AND
DIVERSE VECTOR AREA (RADAR VECTORS)**

18088

CLARKSBURG, WV

NORTH CENTRAL WEST VIRGINIA (CKB)
TAKEOFF MINIMUMS AND (OBSTACLE)
DEPARTURE PROCEDURES
AMDT 6 12264 (FAA)

TAKEOFF MINIMUMS: **Rwy 3**, 300-1¼ or std. w/ min. climb of 402' per NM to 1500. **Rwy 21**, 400-2¾ or std. w/ min. climb of 447' per NM to 1600.

DEPARTURE PROCEDURE: **Rwy 3**, climb heading 031° to 2000 before proceeding on course. **Rwy 21**, climb heading 211° to 1800 before proceeding on course.

TAKEOFF OBSTACLE NOTES: **Rwy 3**, trees beginning 348' from DER, 584' left of centerline, up to 100' AGL/1279' MSL. Trees beginning 5135' from DER, 33' left of centerline, up to 75' AGL/1374' MSL. Tree 1042' from DER, 659' right of centerline, 100' AGL/1319' MSL. Trees beginning 2454' from DER, 659' right of centerline, up to 100' AGL/1374' MSL. Fence 2875' from DER, 756' right of centerline, 10' AGL/ 1316' MSL. Terrain 2720' from DER, 622' right of centerline, 1370' MSL. **Rwy 21**, bush 12' from DER, 258' left of centerline, 5' AGL/1184' MSL. Tree 571' from DER, 533' left of centerline, 86' AGL/1226' MSL. Trees 4880' from DER, 90' left of centerline, up to 100' AGL/1335' MSL.

CLEARFIELD, PA

CLEARFIELD-LAWRENCE (FIG)
TAKEOFF MINIMUMS AND (OBSTACLE)
DEPARTURE PROCEDURES
AMDT 3 12264 (FAA)

TAKEOFF MINIMUMS: **Rwy 30**, std. w/min. climb of 342' per NM to 3500 or 1900-3 for climb in visual conditions.

DEPARTURE PROCEDURE: **Rwy 12**, climb heading 110° to 2500 before proceeding on course. **Rwy 30**, climb heading 299° to 2700 before proceeding on course, or for climb in visual conditions cross Clearfield-Lawrence airport at or above 3300 before proceeding on course. When executing VCOA, notify ATC prior to departure.

TAKEOFF OBSTACLE NOTES: **Rwy 12**, trees beginning 166' from DER, left and right of centerline, up to 100' AGL/ 1635' MSL. Tower, 2.73 NM from DER, 4881' right of centerline, 422' AGL/ 2032' MSL. **Rwy 30**, airplane on taxiway 7' from DER, 131' left of centerline, up to 15' AGL/ 1534' MSL. Trees beginning 53' from DER, left and right of centerline, up to 100' AGL/2135' MSL. Vehicles on roadway beginning 241' from DER, left and right of centerline, up to 15' AGL/ 1534' MSL. Towers beginning 2.32 NM from DER, 760' left and right of centerline, up to 611' AGL/ 2996' MSL.

COATESVILLE, PA

CHESTER COUNTY G. O. CARLSON (MQS)
TAKEOFF MINIMUMS AND (OBSTACLE)
DEPARTURE PROCEDURES
ORIG 08213 (FAA)

TAKEOFF OBSTACLE NOTES: **Rwy 11**, tree 342' from DER, 592' right of centerline, 90' AGL/680' MSL. Trees beginning 1135' from DER, 549' left of centerline, up to 87' AGL/696' MSL. **Rwy 29**, tree 281' from DER, 325' left of centerline, 7' AGL/646' MSL. Obstruction light on poles beginning 418' from DER, 308' right of centerline, up to 40' AGL/690' MSL. Antenna on buildings beginning 506' from DER, 208' right of centerline, up to 23' AGL/692' MSL. Trees beginning 1048' from DER, 277' right of centerline, up to 62' AGL/731' MSL. Multiple poles beginning 1723' from DER, 238' right of centerline, up to 34' AGL/703' MSL.

COLLEGEVILLE, PA

PERKIOMEN VALLEY (N10)
TAKEOFF MINIMUMS AND (OBSTACLE)
DEPARTURE PROCEDURES
ORIG-A 10014 (FAA)

TAKEOFF MINIMUMS: Procedure NA at night.
TAKEOFF OBSTACLE NOTES: **Rwy 9**, multiple trees beginning 386' from DER, 91' right of centerline, up to 100' AGL/369' MSL. Multiple trees beginning 923' from DER, 342' left of centerline, up to 100' AGL/369' MSL. Power lines 4412' from DER, 98' left of centerline, up to 150' AGL/400' MSL. **Rwy 27**, multiple trees beginning 104' from DER, 45' right of centerline, up to 100' AGL/329' MSL. Multiple trees beginning 212' from DER, 42' left of centerline, up to 100' AGL/317' MSL.

CONNELLSVILLE, PA

JOSEPH A HARDY CONNELLSVILLE (VVS)
TAKEOFF MINIMUMS AND (OBSTACLE)
DEPARTURE PROCEDURES
AMDT 1 12264 (FAA)

TAKEOFF MINIMUMS: **Rwy 14**, NA - Obstacles.
DEPARTURE PROCEDURE: **Rwy 5**, climb heading 049° to 3100 before proceeding on course. **Rwy 23**, climb heading 229° to 3200 before proceeding on course.

Rwy 32, climb heading 319° to 3000 before proceeding on course.
TAKEOFF OBSTACLE NOTES: **Rwy 5**, bldg 203' from DER, 270' right of centerline, 24' AGL/1274' MSL. LOC 329' from DER, 2' right of centerline, 13' AGL/1273' MSL. Road 8' from DER, 476' right of centerline, 1273' MSL. Trees beginning 68' from DER, 17' left of centerline, up to 100' AGL/1386' MSL. Trees beginning 117' from DER, 4' right of centerline, up to 100' AGL/1385' MSL. **Rwy 23**, tree 620' from DER, 642' left of centerline, 100' AGL/1258' MSL. **Rwy 32**, trees beginning 1004' from DER, 129' left of centerline, 100' AGL/1263' MSL. Trees beginning 1004' from DER, 11' right of centerline, up to 100' AGL/1306' MSL. Pole 1292' from DER, 734' right of centerline, 33' AGL/1273' MSL. Sign 36' from DER, 200' left of centerline, 2' AGL/1229' MSL.

**TAKEOFF MINIMUMS, (OBSTACLE) DEPARTURE PROCEDURES, AND
DIVERSE VECTOR AREA (RADAR VECTORS)**

18088

NE-4

24 MAY 2018 to 21 JUN 2018

24 MAY 2018 to 21 JUN 2018

**TAKEOFF MINIMUMS, (OBSTACLE) DEPARTURE PROCEDURES, AND
DIVERSE VECTOR AREA (RADAR VECTORS)**

18088

CORRY, PA

CORRY-LAWRENCE (8G2)

TAKEOFF MINIMUMS AND (OBSTACLE)
DEPARTURE PROCEDURES

ORIG-A 11125 (FAA)

TAKEOFF OBSTACLE NOTES: **Rwy 14**, terrain, tank, pole, and trees beginning 54' from DER, 300' left of centerline, up to 66' AGL/1835' MSL. Pole and trees beginning 169' from DER, 285' right of centerline, up to 49' AGL/1808' MSL. **Rwy 32**, Trees beginning 35' from DER, 87' left of centerline, up to 60' AGL/1749' MSL. Trees beginning 178' from DER, 14' right of centerline, up to 67' AGL/1756' MSL.

DANVILLE, PA

DANVILLE (8N8)

TAKEOFF MINIMUMS AND (OBSTACLE)
DEPARTURE PROCEDURES

ORIG 12152 (FAA)

TAKEOFF MINIMUMS: **Rwy 9**, std. w/min. climb of 370' per NM to 2000, or 1700-3 for climb in visual conditions. **Rwy 27**, std. w/min. climb of 280' per NM to 2400, or 1700-3 for climb in visual conditions.

DEPARTURE PROCEDURE: **Rwy 9**, climb heading 088° to 2000 before proceeding on course or for climb in visual conditions cross Danville Airport at or above 1900 before proceeding on course. When executing VCOA, notify ATC prior to departure. **Rwy 27**, climb heading 268° to 2400 before proceeding on course or for climb in visual conditions cross Danville Airport at or above 1900 before proceeding on course. When executing VCOA, notify ATC prior to departure.

TAKEOFF OBSTACLE NOTES: **Rwy 9**, trees beginning 665' from DER, 554' right of centerline, up to 100' AGL/699' MSL. Trees beginning 769' from DER, 326' left of centerline, up to 100' AGL/659' MSL. **Rwy 27**, trees beginning 1332' from DER, 274' right of centerline, up to 100' AGL/619' MSL. Trees beginning 968' from DER, 136' left of centerline, up to 100' AGL/639' MSL. Pole beginning 1145' from DER, 174' left of centerline, 58' AGL/588' MSL.

DOYLESTOWN, PA

DOYLESTOWN (DYL)

TAKEOFF MINIMUMS AND (OBSTACLE)
DEPARTURE PROCEDURES

AMDT 2 04330 (FAA)

TAKEOFF OBSTACLE NOTES: **Rwy 5**, terrain and trees 246' from DER, 457' right of centerline, 60' AGL/460' MSL. **Rwy 23**, terrain and tree 1498' from DER, 764' left of centerline, 100' AGL/460' MSL; terrain and trees 2701' from DER, 44' left of centerline, 100' AGL/480' MSL.

DUBOIS, PA

DUBOIS RGNL (DUJ)

TAKEOFF MINIMUMS AND (OBSTACLE)
DEPARTURE PROCEDURES

AMDT 2 10154 (FAA)

TAKEOFF OBSTACLE NOTES: **Rwy 7**, wind sock 31' from DER, 452' left of centerline, 29' AGL/1834' MSL. Tree 1608' from DER, 698' right of centerline, up to 99' AGL/1859' MSL. **Rwy 25**, wind sock and trees beginning 97' from DER, 300' right of centerline, up to 74' AGL/1854' MSL. Buildings and trees beginning 164' from DER, 254' left of centerline, up to 92' AGL/1872' MSL.

EAST STROUDSBURG, PA

STROUDSBURG-POCONO (N53)

TAKEOFF MINIMUMS AND (OBSTACLE)
DEPARTURE PROCEDURES

AMDT 1 11069 (FAA)

TAKEOFF MINIMUMS: **Rwy 8**, std. w/min. climb of 440' per NM to 1100, or 1500-2½ for climb in visual conditions. **Rwy 26**, 300-1 w/min. climb of 405' per NM to 1500, or 1500-2½ for climb in visual conditions. DEPARTURE PROCEDURE: **Rwy 8**, climb heading 077° to 1800 before proceeding on course, or for climb in visual conditions, cross Stroudsburg-Pocono Airport at or above 1800 before proceeding on course. **Rwy 26**, climb heading 258° to 2600 before proceeding on course, or for climb in visual conditions, cross Stroudsburg-Pocono Airport at or above 1800 before proceeding on course.

TAKEOFF OBSTACLE NOTES: **Rwy 8**, trees beginning 265' from DER, 145' right of centerline, up to 100' AGL/599' MSL. Trees beginning 275' from DER, 70' left of centerline, up to 100' AGL/599' MSL. Vehicle on road 275' from DER, 70' left of centerline, up to 15' AGL/514' MSL. Houses beginning 597' from DER, 41' left of centerline, up to 40' AGL/539' MSL. Houses beginning 656' from DER, 205' right of centerline, up to 40' AGL/539' MSL. Trees beginning 2467' from DER, 878' left of centerline, up to 100' AGL/619' MSL. Trees beginning 4113' from DER, 55' left of centerline, up to 100' AGL/619' MSL. Trees beginning 5035' from DER, 1083' right of centerline, up to 100' AGL/619' MSL. **Rwy 26**, trees beginning 97' from DER, 369' right of centerline, up to 100' AGL/579' MSL. Trees beginning 366' from DER, 526' left of centerline, up to 100' AGL/639' MSL. Trees beginning 1792' from DER, 972' right of centerline, up to 100' AGL/639' MSL. Trees beginning 1882' from DER, 529' left of centerline, up to 100' AGL/659' MSL.

EASTON, PA

BRADEN AIRPARK (N43)

TAKEOFF MINIMUMS AND (OBSTACLE)
DEPARTURE PROCEDURES

AMDT 1 10294 (FAA)

TAKEOFF MINIMUMS: **Rwy 18**, 400-2¼ or std. w/min. climb of 203' per NM to 900, or alternatively, with standard takeoff minimums and a normal 200'/NM climb gradient, takeoff must occur no later than 1200' prior to DER. **Rwy 36**, standard with minimum climb of 452' per NM to 1300 or 600-3 with minimum climb of 256' per NM to 2600 or 1300-2½ for climb in visual conditions.

DEPARTURE PROCEDURE: **Rwy 18**, climb heading 179° to 1100 before proceeding on course. **Rwy 36**, for climb in visual conditions: cross Braden Airpark at or above 1500 before proceeding on course.

TAKEOFF OBSTACLE NOTES: **Rwy 18**, trees beginning 571' from DER, 453' left of centerline, up to 100' AGL/499' MSL. Trees beginning 1366' from DER, 539' right of centerline, up to 100' AGL/499' MSL. **Rwy 36**, vehicles on road, 50' from DER, on centerline, up to 15' AGL/414' MSL. Trees beginning 986' from DER, 40' left of centerline, up to 100' AGL/539' MSL. Building and trees beginning 153' from DER, 89' right of centerline, up to 100' AGL/ 539' MSL.

**TAKEOFF MINIMUMS, (OBSTACLE) DEPARTURE PROCEDURES, AND
DIVERSE VECTOR AREA (RADAR VECTORS)**

18088

NE-4

24 MAY 2018 to 21 JUN 2018

24 MAY 2018 to 21 JUN 2018

**TAKEOFF MINIMUMS, (OBSTACLE) DEPARTURE PROCEDURES, AND
DIVERSE VECTOR AREA (RADAR VECTORS)**

18088

EBENSBURG, PA

EBENSBURG (9G8)

TAKEOFF MINIMUMS AND (OBSTACLE)
DEPARTURE PROCEDURES

AMDT 2A 15260 (FAA)

TAKEOFF MINIMUMS: **Rwy 7**, 300-1½ or std. w/ min.
climb of 350' per NM to 2500. **Rwy 11U, 29U**, NA-
Environmental.TAKEOFF OBSTACLE NOTES: **Rwy 25**, numerous
trees beginning 632' from DER, 245' left of centerline,
up to 100' AGL/2179' MSL. Numerous trees beginning
759' from DER, 477' right of centerline, up to 100'
AGL/2159' MSL. **Rwy 7**, numerous trees beginning
245' from DER, 476' right of centerline, up to 100'
AGL/2279' MSL. Numerous trees beginning 696' from
DER, 273' left of centerline, up to 100' AGL/2389' MSL.
Stack 1.1 NM from DER, 1571' right of centerline, 192'
AGL/2352' MSL. Tower 1.17 NM from DER, 1529' right
of centerline, 198' AGL/2348' MSL. Vehicle on
highway, 487' from DER, 180' right of centerline, 19'
AGL/2138' MSL.**ELKINS, WV**ELKINS-RANDOLPH COUNTY-JENNINGS
RANDOLPH FIELD (EKN)TAKEOFF MINIMUMS AND (OBSTACLE)
DEPARTURE PROCEDURES

AMDT 3 04050 (FAA)

TAKEOFF MINIMUMS: **Rwys 5, 14, 32**, NA-obstacles.
Rwy 23, 1800-2 or std. with a min. climb of 360' per
NM to 4300.DEPARTURE PROCEDURE: **Rwy 23**, climb via heading
200° to 5000 then climbing right turn to 6000 direct to
EKN VORTAC then EKN R-346, expect radar vectors.TAKEOFF OBSTACLE NOTES: **Rwy 23**, OL and trees
788' from DER, 206' left of centerline, 85' AGL/2059'
MSL. Trees 10,130' from DER, 700' left of centerline,
105' AGL/2331' MSL.**ERIE, PA**

ERIE INTL/TOM RIDGE FIELD (ERI)

TAKEOFF MINIMUMS AND (OBSTACLE)
DEPARTURE PROCEDURES

AMDT 6 12348 (FAA)

TAKEOFF MINIMUMS: **Rwy 20**, 300-1¾ or std. w/min.
climb of 329' per NM to 1100.DEPARTURE PROCEDURE: **Rwy 2**, climb heading 020°
to 1300 before turning right. **Rwy 6**, climb heading 064°
to 1900 before turning right. **Rwy 20**, climb heading 200°
to 1700 before turning left. **Rwy 24**, climb heading 244°
to 1400 before turning left.TAKEOFF OBSTACLE NOTES: **Rwy 2**, vehicles on road,
building, trees and poles beginning 31' from DER, 2' left
of centerline, up to 131' AGL/821' MSL. Trees, fence,
vehicles on road and poles beginning 74' from DER, 1'
right of centerline, up to 107' AGL/817' MSL. **Rwy 6**,
trees beginning 381' from DER, 336' right of centerline,
up to 100' AGL/832' MSL. Trees beginning 1360' from
DER, 678' left of centerline, up to 98' AGL/818' MSL.
Rwy 20, trees, railroads, buildings and poles
beginning 41' from DER, 3' left of centerline, up to 105'
AGL/883' MSL. Fence, bush, railroads, trees, buildings,
poles and steeple beginning 130' from DER, 1' right of
centerline, up to 112' AGL/869' MSL. Trees and poles
beginning 4411' from DER, left and right of centerline, up
to 103' AGL/883' MSL. Tree 1 NM from DER, 694' right
of centerline, up to 143' AGL/983' MSL. Tree 1.35 NM
from DER, 2559' right of centerline, up to 94' AGL/944'
MSL. **Rwy 24**, railroad, pole and trees beginning 11' from
DER, 325' left of centerline, up to 67' AGL/797' MSL. Rod
on building, antenna and trees beginning 135' from DER,
250' right of centerline, up to 111' AGL/834' MSL. Trees
beginning 2568' from DER, 226' left of centerline, up to
97' AGL/827' MSL.**FACTORYVILLE, PA**

SEAMANS FIELD (9N3)

TAKEOFF MINIMUMS AND (OBSTACLE)
DEPARTURE PROCEDURES

AMDT 3 08213 (FAA)

TAKEOFF MINIMUMS: **Rwy 4**, 400-2½ or std. w/ min.
climb of 221' per NM to 1700.DEPARTURE PROCEDURE: **Rwy 4**, climb heading 036°
to 1700 before proceeding on course. **Rwy 22**, climb
heading 216° to 2900 before proceeding on course.TAKEOFF OBSTACLE NOTES: **Rwy 4**, trees beginning
1134' from DER, 720' right of centerline, up to 65'
AGL/1264' MSL. Trees beginning 1.82 NM from DER,
774' left of centerline, up to 100' AGL/1499' MSL.

24 MAY 2018 to 21 JUN 2018

24 MAY 2018 to 21 JUN 2018

**TAKEOFF MINIMUMS, (OBSTACLE) DEPARTURE PROCEDURES, AND
DIVERSE VECTOR AREA (RADAR VECTORS)**

18088

NE-4

TAKEOFF MINIMUMS, (OBSTACLE) DEPARTURE PROCEDURES, AND DIVERSE VECTOR AREA (RADAR VECTORS)

18088

FAIRMONT, WV

FAIRMONT MUNI-FRANKMAN FIELD (4G7)

TAKEOFF MINIMUMS AND (OBSTACLE)
DEPARTURE PROCEDURES

AMDT 6 10154 (FAA)

TAKEOFF MINIMUMS: **Rwy 5**, 500-2¾ or std. w/ min. climb of 420' per NM to 1800. **Rwy 23**, 500-2¾ w/ min. climb of 270' per NM to 1900 or 1200-3 for climb in visual conditions.

DEPARTURE PROCEDURE: **Rwy 5**, climb heading 045° to 1800 before proceeding on course. **Rwy 23**, climb heading 225° to 1700 before proceeding on course or for climb in visual conditions: Cross Fairmont Muni-Frankman Field Airport at or above 2200 MSL before proceeding on course.

TAKEOFF OBSTACLE NOTES: **Rwy 5**, tree 1739' from DER, 831' right of centerline, 99' AGL/1166' MSL. Multiple trees and towers beginning 27' from DER, 99' right of centerline, up to 217' AGL/1475' MSL. Trees 1282' from DER, 620' left of centerline, 78' AGL/1057' MSL. **Rwy 23**, multiple trees beginning 493' from DER, 77' right of centerline, up to 100' AGL/1499' MSL. Road, multiple trees, and rising terrain beginning 814' from DER, 338' left of centerline, up to 200' AGL/1438' MSL.

FINLEYVILLE, PA

FINLEYVILLE AIRPARK (G05)

TAKEOFF MINIMUMS AND (OBSTACLE)
DEPARTURE PROCEDURES

ORIG 17285 (FAA)

DEPARTURE PROCEDURE: **Rwy 32**, climb heading 318° to 1800 before turning right.

TAKEOFF OBSTACLE NOTES: **Rwy 14**, trees beginning 28' from DER, 102' left of centerline, 1319' MSL. Trees beginning 30' from DER, 124' right of centerline, 1319' MSL. Tree 584' from DER, 54' left of centerline, up to 1319' MSL. Trees beginning 1521' from DER, 129' left of centerline, 1339' MSL. **Rwy 32**, trees beginning 26' from DER, 227' right of centerline, 1299' MSL. Trees 274' from DER, crossing centerline, 1299' MSL.

FRANKLIN, PA

VENANGO RGNL (FKL)

TAKEOFF MINIMUMS AND (OBSTACLE)
DEPARTURE PROCEDURES

AMDT 3 04274 (FAA)

DEPARTURE PROCEDURE: **Rwy 3**, climb via heading 027° to 2000 before proceeding on course. **Rwy 12**, climb via heading 116° to 2000 before proceeding on course. **Rwy 21**, climb via heading 207° to 2000 before proceeding on course. **Rwy 30**, climb via heading 296° to 2000 before proceeding on course.

TAKEOFF OBSTACLE NOTES: **Rwy 3**, tree 638' from DER, 528' right of centerline, 34' AGL/1553' MSL. Tree 2547' from DER, 697' right of centerline, 78' AGL/1597' MSL. **Rwy 12**, tank 1027' from DER, 660' left of centerline, 92' AGL/1612' MSL. Tree 1123' from DER, 504' left of centerline, 81' AGL/1600' MSL. Tree 800' from DER, 369' right of centerline, 71' AGL/1571' MSL. **Rwy 21**, multiple trees beginning 573' from DER, 191' to 679' right of centerline, up to 81' AGL/1599' MSL. Multiple trees beginning 264' from DER, 326' to 749' left of centerline, up to 68' AGL/1597' MSL. Sign 2474' from DER, 30' right of centerline, 94' AGL/1606' MSL. **Rwy 21**, pole 1295' from DER, 530' left of centerline, 47' AGL/1567' MSL.

GETTYSBURG, PA

GETTYSBURG RGNL (W05)

TAKEOFF MINIMUMS AND (OBSTACLE)
DEPARTURE PROCEDURES

ORIG A-15232 (FAA)

TAKEOFF MINIMUMS: **Rwy 6**, NA, obstacles. **Rwy 24**, std. w/ min. climb of 310' per NM to 1900, or 1500-2½ for climb in visual conditions.

DEPARTURE PROCEDURE: **Rwy 24**, climb heading 241° to 1900 before proceeding on course.

VCOA: Obtain ATC approval for climb in visual conditions when requesting IFR clearance. Climb in visual conditions to cross Gettysburg Regional airport at or above 1900 before proceeding on course.

TAKEOFF OBSTACLE NOTES: **Rwy 24**, vehicle on road 350' from DER, 61' left of centerline 17' AGL/576' MSL. Trees beginning 273' from DER, 214' right of centerline, up to 100' AGL/639' MSL.

GREENVILLE, PA

GREENVILLE MUNI (4G1)

TAKEOFF MINIMUMS AND (OBSTACLE)
DEPARTURE PROCEDURES

ORIG 15316 (FAA)

TAKEOFF MINIMUMS: **Rwy 5, 23**, NA-Environmental. DEPARTURE PROCEDURE: **Rwy 33**, climb heading 330° to 1600 before turning right.

TAKEOFF OBSTACLE NOTES: **Rwy 15**, vehicles on road 220' from DER, left and right of centerline, 15' AGL/1214' MSL. Trees 381' from DER, 480' right of centerline, up to 100' AGL/1309' MSL. Trees 1381' from DER, left and right of centerline, up to 100' AGL/1239' MSL. **Rwy 33**, trees 184' from DER, 278' right of centerline, 100' AGL/1259' MSL. Trees 1923' from DER, left and right of centerline, 100' AGL/1229' MSL.

GROVE CITY, PA

GROVE CITY (29D)

TAKEOFF MINIMUMS AND (OBSTACLE)
DEPARTURE PROCEDURES

AMDT 4 13178 (FAA)

TAKEOFF OBSTACLE NOTES: **Rwy 10**, trees beginning 15' from DER, 99' left of centerline, up to 67' AGL/1356' MSL. Trees beginning 68' from DER, 128' right of centerline, up to 72' AGL/1361' MSL. Multiple buildings, poles, road, and sign beginning 136' from DER, left and right of centerline, up to 69' AGL/1343' MSL. Trees beginning 1359' from DER, left and right of centerline, up to 93' AGL/1362' MSL. **Rwy 28**, trees beginning 22' from DER, 28' left of centerline, up to 76' AGL/1465' MSL. Trees beginning 198' from DER, 32' right of centerline, up to 85' AGL/1464' MSL. Fence 79' from DER, 321' right of centerline, 14' AGL/1387' MSL. Buildings, poles, and vehicles on roadway beginning 165' from DER, left and right of centerline, up to 40' AGL/1441' MSL. Trees beginning 1008' from DER, left and right of centerline, up to 113' AGL/1512' MSL.

TAKEOFF MINIMUMS, (OBSTACLE) DEPARTURE PROCEDURES, AND DIVERSE VECTOR AREA (RADAR VECTORS)

18088

NE-4

**TAKEOFF MINIMUMS, (OBSTACLE) DEPARTURE PROCEDURES, AND
DIVERSE VECTOR AREA (RADAR VECTORS)**

HARRISBURG, PA

**HARRISBURG/CAPITAL CITY (CXY)
TAKEOFF MINIMUMS AND (OBSTACLE)
DEPARTURE PROCEDURES
AMDT 4 11041 (FAA)**

TAKEOFF MINIMUMS: **Rwy 8**, 300-2 ¼ or std. w/ min. climb of 244' per NM to 800. **Rwy 12**, std. w/ min. climb of 377' per NM to 1300 or 700-3 w/ min. climb of 336' per NM to 1300. **Rwy 26**, 400-2 ¼ or std. w/ min. climb of 334' per NM to 900. **Rwy 30**, 300-1¼ or std. w/ min. climb of 513' per NM to 700.

DEPARTURE PROCEDURE: **Rwy 8**, climb heading 082° to 1300 before proceeding on course. **Rwy 12**, climb heading 128° to 1400 before proceeding on course. **Rwy 26**, climb heading 262° to 1500 before proceeding on course. **Rwy 30**, climb heading 308° to 1900 before proceeding on course.

TAKEOFF OBSTACLE NOTES: **Rwy 8**, vehicles on road, poles, and trees beginning 204' from DER, 21' left of centerline, up to 47' AGL/376' MSL. Antenna on building, poles, and trees beginning 101' from DER, 68' right of centerline, up to 57' AGL/386' MSL. Trees 1.3 NM from DER, 944' left of centerline, up to 69' AGL/598' MSL. Trees 1.8 NM from DER, 169' right of centerline, up to 78' AGL/637' MSL. **Rwy 12**, bush, sign, chimney, church spire, poles, and trees beginning 35' from DER, 145' left of centerline, up to 64' AGL/453' MSL. Terrain, railroad, buildings, and trees beginning 6' from DER, 18' right of centerline, up to 42' AGL/392' MSL. Trees 2.1 NM from DER, 3961' left of centerline, up to 100' AGL/979' MSL. Trees 2.5 NM from DER, 3716' right of centerline, up to 100' AGL/1039' MSL. **Rwy 26**, bush and trees beginning 29' from DER, 102' left of centerline, up to 59' AGL/478' MSL. Trees beginning 525' from DER, 348' left of centerline, up to 48' AGL/447' MSL. Trees 1.4 NM from DER, 1654' left of centerline, up to 61' AGL/690' MSL. Trees 1.7 NM from DER, 3154' left of centerline, up to 100' AGL/739' MSL. **Rwy 30**, light standard and trees beginning 213' from DER, 30' left of centerline, up to 65' AGL/484' MSL. Pole and trees beginning 411' from DER, 72' right of centerline, up to 78' AGL/397' MSL. Trees 3136' from DER, 1282' left of centerline, up to 42' AGL/541' MSL. Trees 5546' from DER, 423' left of centerline, up to 61' AGL/580' MSL.

HARRISBURG, PA (CON'T)

**HARRISBURG INTL (MDT)
TAKEOFF MINIMUMS AND (OBSTACLE)
DEPARTURE PROCEDURES
AMDT 8A 16259 (FAA)**

TAKEOFF MINIMUMS: **Rwy 13**, 300-2¼ or std. w/min. climb of 260' per NM to 700.



DEPARTURE PROCEDURE: **Rwy 13**, climb heading 128° to 1700 before proceeding on course. **Rwy 31**, climb heading 308° to 1900 before proceeding on course.

TAKEOFF OBSTACLE NOTES: **Rwy 13**, grd 1' from DER, 356' left of centerline, 310' MSL. secondary rd, fence, vertical structure, bush, beginning 25' from DER, 474' left of centerline, up to 325' MSL. Tree 1500' from DER, 811' left of centerline, 74' AGL/368' MSL. Trees beginning 1571' from DER, 279' left of centerline, up to 80' AGL/370' MSL. Trees beginning 1666' from DER, 388' left of centerline, up to 85' AGL/375' MSL. Tree 1796' from DER, 536' left of centerline, 79' AGL/380' MSL. Trees beginning 1846' from DER, 394' left of centerline, up to 111' AGL/399' MSL. Tree 3164' from DER, 1301' right of centerline, 118' AGL/399' MSL. Trees beginning 1.3 NM from DER, 135' left of centerline, up to 100' AGL/523' MSL. Trees beginning 1.3 NM from DER, 436' left of centerline, up to 529' MSL. Tree 1.3 NM from DER, 335' right of centerline, 93' AGL/518' MSL. Trees beginning 1.3 NM from DER, 333' right of centerline, up to 519' MSL. Tree, bush, beginning 1.3 NM from DER, 6' left of centerline, up to 76' AGL/548' MSL. Bush beginning 1.3 NM from DER, 15' right of centerline, up to 525' MSL. Tree, bush, beginning 1.3 NM from DER, 360' left of centerline, up to 78' AGL/551' MSL. Trees beginning 1.3 NM from DER, 593' left of centerline, up to 59' AGL/559' MSL. Pole, bush, beginning 1.3 NM from DER, 154' right of centerline, up to 11' AGL/531' MSL. Trees beginning 1.3 NM from DER, 764' left of centerline, up to 560' MSL. Trees beginning 1.3 NM from DER, 56' left of centerline, up to 562' MSL. Pole, tree, beginning 1.3 NM from DER, 156' right of centerline, up to 12' AGL/533' MSL. Trees beginning 1.4 NM from DER, 114' right of centerline, up to 551' MSL. Trees beginning 1.4 NM from DER, 37' left of centerline, up to 563' MSL. Trees beginning 1.4 NM from DER, 26' left of centerline, up to 567' MSL. Trees beginning 1.4 NM from DER, 125' right of centerline, up to 562' MSL. Tree, bush, secondary rd, beginning 1.4 NM from DER, 195' left of centerline, up to 571' MSL. Trees beginning 1.4 NM from DER, 247' right of centerline, up to 54' AGL/577' MSL. Trees beginning 1.5 NM from DER, 198' left of centerline, up to 579' MSL. Trees beginning 1.5 NM from DER, 23' left of centerline, up to 65' AGL/596' MSL. Tree, bldg, beginning 1.5 NM from DER, 4' right of centerline, up to 585' MSL. Tree, trmsn twr, beginning 1.5 NM from DER, 22' left of centerline, up to 603' MSL. Tree, pole, gen util, beginning 1.5 NM from DER, 8' right of centerline, up to 72' AGL/594' MSL. T-1 twr 1.8 NM from DER, 3169' left of centerline, 148' AGL/598' MSL. **Rwy 31**, tree 131' from DER, 356' left of centerline, 15' AGL/314' MSL. NAVAID 300' from DER, on centerline, 9' AGL/319' MSL. Bldg 434' from DER, 259' right of centerline, 10' AGL/321' MSL. Bldg 435' from DER, 247' right of centerline, 15' AGL/325' MSL. Power transmission line 1194' from DER, 740' right of centerline, 59' AGL/367' MSL. Trmsn twr 1206' from DER, 740' right of centerline, 60' AGL/368' MSL. Trmsn twr, tree, beginning 1492' from DER, 732' right of centerline, up to 62' AGL/370' MSL. Trmsn twr, pole, power transmission line, tree, beginning 1779' from DER, 733' right of centerline, up to 65' AGL/373' MSL. Tree 2721' from DER, 812' right of centerline, 71' AGL/380' MSL. Tree 2821' from DER, 1215' right of centerline, 83' AGL/385' MSL.

24 MAY 2018 to 21 JUN 2018

24 MAY 2018 to 21 JUN 2018

**TAKEOFF MINIMUMS, (OBSTACLE) DEPARTURE PROCEDURES, AND
DIVERSE VECTOR AREA (RADAR VECTORS)**


TAKEOFF MINIMUMS, (OBSTACLE) DEPARTURE PROCEDURES, AND


DIVERSE VECTOR AREA (RADAR VECTORS)

18088

HAZLETON, PA

HAZLETON RGNL (HZL)

TAKEOFF MINIMUMS AND (OBSTACLE)

DEPARTURE PROCEDURES

AMDT 2A 14149 (FAA)

TAKEOFF MINIMUMS: **Rwy 10**, 500- 1¾ or std. w/ min. climb of 243' per NM to 2000. **Rwy 28**, 500-1 or std. w/ min. climb of 317' per NM to 1900.

DEPARTURE PROCEDURE: **Rwy 10**, climb on heading 104° to 2200 before proceeding on course.

TAKEOFF OBSTACLE NOTES: **Rwy 10**, multiple trees, beginning 61' from DER, 17' left of centerline, up to 60' AGL/1823' MSL. Water tower, 7582' from DER, 1923' left of centerline, 38' AGL/1825' MSL. Multiple trees, beginning 108' from DER, 24' right of centerline, up to 60' AGL /1705' MSL. **Rwy 28**, multiple trees, beginning 23' from DER, 2' left of centerline, up to 60' AGL/1787' MSL. Multiple trees, beginning 23' from DER, 9' right of centerline, up to 60' AGL/1788' MSL. Multiple signs and poles, beginning 113' from DER, 2' right of centerline, up to 18' AGL/1732' MSL. Water tower, 4431' from DER. 760' left of centerline, 112' AGL/1791' MSL. Multiple buildings, beginning 1922' from DER, 29' right of centerline, up to 93' AGL/1771' MSL.

HUNTINGTON, WV

TRI-STATE/MILTON J FERGUSON FIELD (HTS)

TAKEOFF MINIMUMS AND (OBSTACLE)

DEPARTURE PROCEDURES

AMDT 1 11013 (FAA)

DEPARTURE PROCEDURE: **Rwy 30**, climb heading 313° to 1800 before turning left.

TAKEOFF OBSTACLE NOTES: **Rwy 12**, trees beginning 146' from DER, 220' right of centerline, up to 106' AGL/885' MSL. Trees beginning 304' from DER, 230' left of centerline, up to 97' AGL/856' MSL. **Rwy 30**, trees beginning 254' from DER, 127' left of centerline, up to 89' AGL/928' MSL. Trees beginning 76' from DER, 137' right of centerline, up to 105' AGL/944' MSL.

HONESDALE, PA

CHERRY RIDGE (N30)

TAKEOFF MINIMUMS AND (OBSTACLE)

DEPARTURE PROCEDURES

AMDT 4 10154 (FAA)

TAKEOFF MINIMUMS: **Rwy 18**, 500-2½ or std. w/ min. climb of 210' per NM to 1800, or alternatively, with standard TAKEOFF minimums and a normal 200'/NM climb gradient, TAKEOFF must occur no later than 1400' prior to DER. **Rwy 36**, 500-2¾ or std. w/ min. climb of 642' per NM to 1900.

DEPARTURE PROCEDURE: **Rwy 18**, climb heading 180° to 1800 before turning right.

TAKEOFF OBSTACLE NOTES: **Rwy 18**, tree 3' from DER, 358' right of centerline, 100' AGL/1419' MSL.

Rwy 36, trees beginning 1' from DER, 500' left of centerline, up to 100' AGL/1439' MSL.

24 MAY 2018 to 21 JUN 2018

24 MAY 2018 to 21 JUN 2018


TAKEOFF MINIMUMS, (OBSTACLE) DEPARTURE PROCEDURES, AND


DIVERSE VECTOR AREA (RADAR VECTORS)

18088

NE-4

**TAKEOFF MINIMUMS, (OBSTACLE) DEPARTURE PROCEDURES, AND
DIVERSE VECTOR AREA (RADAR VECTORS)**

18088

INDIANA, PA

INDIANA COUNTY-JIMMY STEWART FLD
(IDI)

**TAKEOFF MINIMUMS AND (OBSTACLE)
DEPARTURE PROCEDURES**
ORIG 16259 (FAA)

TAKEOFF MINIMUMS: Rwy 11, 300-1¼ with a minimum climb of 206' per NM to 2300 or std. w/min. climb of 418' per NM to 2300 or 1300-3 for climb in visual conditions. **Rwy 29**, 300-2 with a minimum climb of 251' per NM to 1800 or std. w/min. climb of 289' per NM to 1800.

DEPARTURE PROCEDURE: Rwy 11, climb heading 106° to 2300 before proceeding on course. **Rwy 29**, climb heading 286° to 1800 before proceeding east.

VCOA: Rwy 11, obtain ATC approval for climb in visual conditions when requesting IFR clearance. Climb in visual conditions to cross Indiana County/Jimmy Stewart field at or above 2600 before proceeding on course.

TAKEOFF OBSTACLE NOTES: Rwy 11, tree 12' from DER, 394' right of centerline, 22' AGL/1435' MSL. Ground 21' from DER, 243' left of centerline, 1421' MSL. Tree, ground beginning 44' from DER, 458' right of centerline, up to 45' AGL/1449' MSL. Ground beginning 761' from DER, 578' right of centerline, up to 1464' MSL. Ground beginning 881' from DER, 518' right of centerline, up to 1473' MSL. Trees beginning 1163' from DER, 492' right of centerline, up to 50' AGL/1477' MSL. Tree 1560' from DER, 871' right of centerline, 94' AGL/1493' MSL. Tree 2774' from DER, 1102' right of centerline, 48' AGL/1494' MSL. Tree 2790' from DER, 953' right of centerline, 63' AGL/1497' MSL. Trees beginning 2967' from DER, 787' right of centerline, up to 45' AGL/1540' MSL. Tree 3102' from DER, 874' right of centerline, 57' AGL/1549' MSL. Tree 3108' from DER, 1114' right of centerline, 49' AGL/1553' MSL. Trees beginning 3176' from DER, 707' right of centerline, up to 58' AGL/1561' MSL. Tree 3222' from DER, 1029' left of centerline, 68' AGL/1503' MSL. Tree 3270' from DER, 1073' left of centerline, 78' AGL/1515' MSL. Trees beginning 3412' from DER, 625' right of centerline, up to 49' AGL/1570' MSL. Trees beginning 3463' from DER, 971' left of centerline, up to 69' AGL/1518' MSL. Trees beginning 3616' from DER, 789' right of centerline, up to 55' AGL/1558' MSL. Trees beginning 3694' from DER, 987' right of centerline, up to 53' AGL/1596' MSL. Trees beginning 3816' from DER, 962' right of centerline, up to 67' AGL/1614' MSL. Tree 3881' from DER, 1185' left of centerline, 78' AGL/1519' MSL. Trees beginning 3936' from DER, 976' right of centerline, up to 65' AGL/1629' MSL. Trees beginning 4984' from DER, 1681' left of centerline, up to 63' AGL/1549' MSL. Tree 5066' from DER, 1410' left of centerline, 76' AGL/1557' MSL. Tree 5077' from DER, 1589' left of centerline, 65' AGL/1567' MSL. Trees beginning 5112' from DER, 1305' left of centerline, up to 68' AGL/1584' MSL. Trees beginning 5351' from DER, 1391' left of centerline, up to 61' AGL/1590' MSL. Tree 5421' from DER, 1848' left of centerline, 52' AGL/1585' MSL.

INDIANA, PA (CON'T)

INDIANA COUNTY-JIMMY STEWART FLD
(CON'T)

Rwy 29, vehicle on road 588' from DER, 617' right of centerline, 1389' MSL. Vehicle on road beginning 594' from DER, 626' right of centerline, up to 1390' MSL. Tree 753' from DER, 598' right of centerline, 26' AGL/1402' MSL. Tree, vehicle on road beginning 758' from DER, 526' right of centerline, up to 24' AGL/1404' MSL. Trees beginning 926' from DER, 479' right of centerline, up to 26' AGL/1421' MSL. Trees beginning 1135' from DER, 478' right of centerline, up to 49' AGL/1455' MSL. Trees beginning 1251' from DER, 391' right of centerline, up to 65' AGL/1482' MSL. Tree 1289' from DER, 546' left of centerline, 61' AGL/1403' MSL. Tree 1292' from DER, 571' left of centerline, 67' AGL/1404' MSL. Tree 4156' from DER, 788' left of centerline, 64' AGL/1491' MSL. Trees beginning 4158' from DER, 446' left of centerline, up to 59' AGL/1493' MSL. Trees beginning 4459' from DER, 410' left of centerline, up to 60' AGL/1494' MSL. Trees beginning 4567' from DER, 224' left of centerline, up to 59' AGL/1496' MSL. Tree 4583' from DER, 336' right of centerline, 70' AGL/1483' MSL. Tree 4646' from DER, 439' right of centerline, 61' AGL/1501' MSL. Trees beginning 4670' from DER, 154' right of centerline, up to 60' AGL/1503' MSL. Trees beginning 4762' from DER, 92' right of centerline, up to 58' AGL/1505' MSL. Tree 4926' from DER, 868' right of centerline, 64' AGL/1515' MSL. Tree 4930' from DER, 635' right of centerline, 58' AGL/1519' MSL. Trees beginning 4941' from DER, 7' right of centerline, up to 72' AGL/1533' MSL. Trees beginning 5176' from DER, 351' right of centerline, up to 77' AGL/1543' MSL. Tree 5200' from DER, 173' left of centerline, 70' AGL/1499' MSL. Tree 5222' from DER, 617' right of centerline, 76' AGL/1544' MSL. Trees beginning 5277' from DER, 32' right of centerline, up to 90' AGL/1558' MSL. Trees beginning 5529' from DER, 293' right of centerline, up to 92' AGL/1565' MSL. Tree 5754' from DER, 632' left of centerline, 88' AGL/1528' MSL. Trees beginning 5989' from DER, 668' left of centerline, up to 83' AGL/1551' MSL. Trees beginning 1 NM from DER, 115' left of centerline, up to 90' AGL/1577' MSL. Trees beginning 1 NM from DER, 64' left of centerline, up to 77' AGL/1578' MSL. Trees beginning 1 NM from DER, 45' left of centerline, up to 90' AGL/1584' MSL. Trees beginning 1 NM from DER, 5' left of centerline, up to 89' AGL/1590' MSL. Trees beginning 1.1 NM from DER, 28' right of centerline, up to 83' AGL/1572' MSL. Trees beginning 1.1 NM from DER, 422' right of centerline, up to 83' AGL/1574' MSL. Trees beginning 1.1 NM from DER, 183' right of centerline, up to 89' AGL/1578' MSL. Trees beginning 1.1 NM from DER, 59' right of centerline, up to 89' AGL/1582' MSL. Tree 1.4 NM from DER, 1982' right of centerline, 58' AGL/1590' MSL. Trees beginning 1.4 NM from DER, 1783' right of centerline, up to 61' AGL/1605' MSL. Tree 1.5 NM from DER, 1252' right of centerline, 59' AGL/1612' MSL. Tank, tree, water tower, communication tower, beginning 1.5 NM from DER, 1250' right of centerline, up to 109' AGL/1668' MSL. Tower 1.6 NM from DER, 1292' right of centerline, 121' AGL/1676' MSL. Communication tower, tower, beginning 1.6 NM from DER, 1076' right of centerline, up to 116' AGL/1677' MSL. Communication tower 1.6 NM from DER, 1135' right of centerline, 115' AGL/1676' MSL.

24 MAY 2018 to 21 JUN 2018

24 MAY 2018 to 21 JUN 2018

**TAKEOFF MINIMUMS, (OBSTACLE) DEPARTURE PROCEDURES, AND
DIVERSE VECTOR AREA (RADAR VECTORS)**

18088

NE-4

**TAKEOFF MINIMUMS, (OBSTACLE) DEPARTURE PROCEDURES, AND
DIVERSE VECTOR AREA (RADAR VECTORS)**

18088

JOHNSTOWN, PA

JOHN MURTHA JOHNSTOWN-CAMBRIA
CO (JST)

TAKEOFF MINIMUMS AND (OBSTACLE)
DEPARTURE PROCEDURES
AMDT 4 08269 (FAA)

TAKEOFF OBSTACLE NOTES: **Rwy 5**, trees beginning 326' from DER, 342' right of centerline, up to 100' AGL/2358' MSL. Trees beginning 887' from DER, 384' left of centerline, up to 100' AGL/2341' MSL. **Rwy 23**, trees beginning 215' from DER, 227' right of centerline, up to 100' AGL/2339' MSL. Trees beginning 431' from DER, 250' left of centerline, up to 100' AGL/2379' MSL. **Rwy 33**, trees beginning 359' from DER, 318' right of centerline, up to 100' AGL/2409' MSL.

LANCASTER, PA

LANCASTER (LNS)

TAKEOFF MINIMUMS AND (OBSTACLE)
DEPARTURE PROCEDURES
AMDT 1 09351 (FAA)

TAKEOFF MINIMUMS: **Rwy 8**, 300-1¼ or std. w/ min. climb of 301' per NM to 700.

Rwy 31, 300-1½ or std. w/ min. climb of 210' per NM to 700, or alternatively with standard takeoff minimums and a normal 200'/NM climb gradient, takeoff must occur no later than 1300' prior to DER.

DEPARTURE PROCEDURE: **Rwy 8**, climb heading 077° to 800 before turning left.

TAKEOFF OBSTACLE NOTES: **Rwy 8**, silo 590' from DER, 637' right of centerline, 88' AGL/427' MSL. Trees beginning 825' from DER, 41' right of centerline, up to 100' AGL/425' MSL. Trees beginning 1336' from DER, 281' left of centerline, up to 100' AGL/579' MSL. **Rwy 13**, trees beginning 2322' from DER, 902' right of centerline, up to 100' AGL/499' MSL. Trees beginning 269' from DER, 328' left of centerline, up to 43' AGL/442' MSL. **Rwy 26**, vehicles on road beginning 269' from DER, 494' right of centerline, up to 15' AGL/403' MSL. Tree 1257' from DER, 797' right of centerline, 59' AGL/439' MSL. Trees beginning 1927' from DER, 915' left of centerline, up to 100' AGL/489' MSL. **Rwy 31**, trees beginning 1334' from DER, 350' right of centerline, up to 100' AGL/571' MSL. Pole 402' from DER, 221' left of centerline, 24' AGL/404' MSL. Building 527' from DER, 229' left of centerline, 29' AGL/409' MSL. Trees beginning 956' from DER, 88' left of centerline, up to 100' AGL/489' MSL.

LATROBE, PA

ARNOLD PALMER RGNL (LBE)

TAKEOFF MINIMUMS AND (OBSTACLE)
DEPARTURE PROCEDURES
AMDT 7 18088(FAA)

TAKEOFF MINIMUMS: **Rwy 6**, std. w/ min. climb of 220' per NM to 3300 or 1700-3 for VCOA.

DEPARTURE PROCEDURE: **Rwy 6**, climb heading 041° to 3300 before proceeding on course. **Rwy 24**, climb heading 236° to 2300 before proceeding on course.

VCOA: **Rwy 6**, obtain ATC approval for VCOA when requesting IFR clearance. Climb in visual conditions to cross Arnold Palmer RGNL airport at or above 2700 before proceeding on course.

TAKEOFF OBSTACLE NOTES: **Rwy 6**, building 143' from DER, 412' left of centerline, 14' AGL/1143' MSL. Poles beginning 1184' from DER, 750' right of centerline, up to 40' AGL/1300' MSL. Tree 2046' from DER, 234' left of centerline, 1187' MSL. Tree 3077' from DER, 264' right of centerline, 57' AGL/1217' MSL. Tree 4788' from DER, 951' left of centerline, 82' AGL/1260' MSL. **Rwy 24**, pole 511' from DER, 578' left of centerline, 40' AGL/1239' MSL. Trees and pole beginning 634' from DER, 389' left of centerline, up to 1256' MSL. Trees beginning 1421' from DER, 774' right of centerline, up to 1257' MSL. Trees beginning 1824' from DER, 784' right of centerline, up to 1275' MSL. Trees beginning 2656' from DER, 1161' right of centerline, up to 93' AGL/1296' MSL. Tree 3093' from DER, 1193' right of centerline, 62' AGL/1310' MSL. Trees beginning 3106' from DER, 958' right of centerline, up to 53' AGL/1322' MSL. Trees beginning 3352' from DER, 1020' right of centerline, up to 65' AGL/1348' MSL.

LEBANON, PA

KELLER BROTHERS (08N)

TAKEOFF MINIMUMS AND (OBSTACLE)
DEPARTURE PROCEDURES
ORIG 12152 (FAA)

TAKEOFF MINIMUMS: **Rwy 7**, 500-3 w/ min. climb of 231' per NM to 1200 or 1500-2 ½ for climb in visual conditions. **Rwy 25**, 800-3 w/ min. climb of 370' per NM to 1600 or 1500-2 ½ for climb in visual conditions.

DEPARTURE PROCEDURE: **Rwy 7**, climb heading 068° to 2000 before turning right, or for climb in visual conditions cross Keller Brothers Airport at or above 1900, before proceeding on course. **Rwy 25**, climb heading 248° to 2500 before proceeding on course, or for climb in visual conditions cross Keller Brothers Airport at or above 1900, before proceeding on course.

TAKEOFF OBSTACLE NOTES: **Rwy 7**, trees and buildings beginning 223' from DER, 113' left of centerline, up to 100' AGL/719' MSL. Trees and buildings beginning 1.6 NM from DER, 2422' right of centerline, up to 100' AGL/1499' MSL. **Rwy 25**, trees and buildings beginning 47' from DER, 39' right of centerline, up to 100' AGL/659' MSL. Trees and buildings beginning 355' from DER, 4' left of centerline, up to 100' AGL/1339' MSL.

24 MAY 2018 to 21 JUN 2018

24 MAY 2018 to 21 JUN 2018

**TAKEOFF MINIMUMS, (OBSTACLE) DEPARTURE PROCEDURES, AND
DIVERSE VECTOR AREA (RADAR VECTORS)**

18088

NE-4


TAKEOFF MINIMUMS, (OBSTACLE) DEPARTURE PROCEDURES, AND


DIVERSE VECTOR AREA (RADAR VECTORS)

18088

LEHIGHTON, PA

JAKE ARNER MEMORIAL (22N)

TAKEOFF MINIMUMS AND (OBSTACLE)
DEPARTURE PROCEDURES

AMDT 1 11125 (FAA)

TAKEOFF MINIMUMS: **Rwy 8**, std. w/min. climb of 426' per NM to 1700 or 600-2¼ with minimum climb of 269' per NM to 1700 or 2000-3 for climb in visual conditions.

Rwy 26, std. w/min. climb of 362' per NM to 1600 or 2000-3 for climb in visual conditions.

DEPARTURE PROCEDURE: **Rwy 8**, climb heading 081° to 2400 before proceeding on course, or for climb in visual conditions cross Jake Arner Memorial Airport at or above 2500 before proceeding on course. **Rwy 26**, climb heading 261° to 1900 before proceeding on course, or for climb in visual conditions cross Jake Arner Memorial Airport at or above 2500 before proceeding on course.

TAKEOFF OBSTACLE NOTES: **Rwy 8**, trees beginning 1961' from DER, 42' left of centerline, up to 100' AGL/426' MSL. Trees beginning 5388' from DER, 1817' right of centerline, up to 100' AGL/359' MSL. Building 1.5 NM from DER, 1826' right of centerline, 31' AGL/876' MSL. Tower 2.9 NM from DER, 4326' right of centerline, 207' AGL/967' MSL. **Rwy 26**, trees beginning 3282' from DER, 10' left of centerline, up to 100' AGL/659' MSL. Trees beginning 4511' from DER, 879' right of centerline, up to 100' AGL/699' MSL.

LEWISBURG, WV

GREENBRIER VALLEY (LWB)

TAKEOFF MINIMUMS AND (OBSTACLE)
DEPARTURE PROCEDURES

AMDT 4 09239 (FAA)

DEPARTURE PROCEDURE: **Rwy 4**, climb heading 043° to 3300 before proceeding on course. **Rwy 22**, climb heading 223° to 3100 before proceeding on course.

TAKEOFF OBSTACLE NOTES: **Rwy 4**, tree 1617' from DER, 528' right of centerline, 84' AGL/2364' MSL. **Rwy 22**, trees beginning 759' from DER 553' left of centerline, 60' AGL/2309' MSL. Trees beginning 1996' from DER, 289' right of centerline, up to 104' AGL/2364' MSL.

LOCK HAVEN, PA

WILLIAM T PIPER MEMORIAL (LHV)

TAKEOFF MINIMUMS AND (OBSTACLE)
DEPARTURE PROCEDURES

AMDT 1 06327 (FAA)

TAKEOFF MINIMUMS: **Rwys 9L/R**, NA-obstacles.

Rwy 27L, NA-ATC. **Rwy 27R**, std. w/ a min. climb of 393' per NM to 2500 or 2300-3 for climb in visual conditions.

DEPARTURE PROCEDURE: **Rwy 27R**, climb heading 273° to 2500 before proceeding on course or for climb in visual conditions cross William T. Piper Memorial Airport at or above 2700 MSL before proceeding on course.

TAKEOFF OBSTACLE NOTES: **Rwy 27R**, multiple terrain and trees beginning 1.4 NM from DER, 1194' right of centerline, up to 100' AGL/1119' MSL. Tower 1.8 NM from DER, 349' right of centerline, 154' AGL/895' MSL.

LOGAN, WV

LOGAN COUNTY (6L4)

TAKEOFF MINIMUMS AND (OBSTACLE)
DEPARTURE PROCEDURES

AMDT 1 13066 (FAA)

DEPARTURE PROCEDURE: **Rwy 24**, climb heading 245° to 3000 before proceeding on course.

TAKEOFF OBSTACLE NOTES: **Rwy 6**, trees beginning 46' from DER, 150' left of centerline, up to 49' AGL/ 1683' MSL. Trees beginning 358' from DER, 273' right of centerline, up to 82' AGL/ 1691' MSL. **Rwy 24**, trees 132' from DER, 193' right of centerline, up to 37' AGL/ 1682' MSL. Fence 556' from DER, 145' right of centerline, 18' AGL/ 1673' MSL. Vehicles on road beginning 2187' from DER, crossing left to right, 22' AGL/ 1735' MSL. Trees beginning 2335' from DER, 71' right of centerline, up to 121' AGL/ 1775' MSL. Tree 1408' from DER, 34' left of centerline, up to 134' AGL/ 1751' MSL. Building 1954' from DER, 312' left of centerline, 10' AGL/ 1726' MSL.

MARTINSBURG, WVEASTERN WEST VIRGINIA RGNL/
SHEPHERD FIELD (MRB)TAKEOFF MINIMUMS AND (OBSTACLE)
DEPARTURE PROCEDURES

AMDT 7 16091 (FAA)

DEPARTURE PROCEDURE: **Rwy 8**, climb heading 079° to 1200 before turning westbound. **Rwy 26**, climb heading 259° to 1000, then climbing left turn to 2500 direct MRB VORTAC before proceeding on course.

TAKEOFF OBSTACLE NOTES: **Rwy 8**, tree 704' from DER, 278' right of centerline, 587' MSL. Tree 827' from DER, 575' left of centerline, 592' MSL. Trees beginning 879' from DER, 340' right of centerline, up to 593' MSL. Trees beginning 984' from DER, 309' left of centerline, up to 594' MSL. Tree 1322' from DER, 392' right of centerline, 599' MSL. Trees beginning 1510' from DER, 553' right of centerline, up to 602' MSL. Tree 1729' from DER, 503' right of centerline, 603' MSL. **Rwy 26**, terrain 165' from DER, 468' right of centerline, up to 569' MSL.

MEADVILLE, PA

PORT MEADVILLE (GKJ)

TAKEOFF MINIMUMS AND (OBSTACLE)
DEPARTURE PROCEDURES

AMDT 4 10266 (FAA)

DEPARTURE PROCEDURE: **Rwy 7**, climb heading 069° to 2000 before proceeding on course.

TAKEOFF OBSTACLE NOTES: **Rwy 7**, pole and trees beginning 30' from DER, 128' left of centerline, up to 86' AGL/1465' MSL. Terrain and trees beginning 58' from DER, 174' right of centerline, up to 96' AGL/1455' MSL. **Rwy 25**, trees beginning 33' from DER, 41' left of centerline, up to 90' AGL/1449' MSL. Trees beginning 51' from DER, 17' right of centerline, up to 106' AGL/1455' MSL.


TAKEOFF MINIMUMS, (OBSTACLE) DEPARTURE PROCEDURES, AND


DIVERSE VECTOR AREA (RADAR VECTORS)

18088

NE-4

**TAKEOFF MINIMUMS, (OBSTACLE) DEPARTURE PROCEDURES, AND
DIVERSE VECTOR AREA (RADAR VECTORS)**

MIFFLINTOWN, PA

MIFFLINTOWN (P34)

TAKEOFF MINIMUMS AND (OBSTACLE)
DEPARTURE PROCEDURES

AMDT 1 06327 (FAA)

TAKEOFF MINIMUMS: **Rwy 8**, std. with a min. climb of 500' per NM to 4000 or 2100-3 for climb in visual conditions. **Rwy 26**, NA-obstacles.

DEPARTURE PROCEDURE: **Rwy 8**, climb heading 090° to 4000 before proceeding on course or for climb in visual conditions: cross Mifflintown Airport at or above 2500 MSL before proceeding on course.

TAKEOFF OBSTACLE NOTES: **Rwy 8**, multiple terrain and trees beginning 1332' from DER, 356' left of centerline, up to 200' AGL/839' MSL. Trees 1.2 NM from DER, 2350' right of centerline, up to 100' AGL/759' MSL.

MORGANTOWN, WV

MORGANTOWN MUNI-WALTER L BILL
HART FIELD (MGW)

TAKEOFF MINIMUMS AND (OBSTACLE)
DEPARTURE PROCEDURES

AMDT 6 99308 (FAA)

TAKEOFF MINIMUMS: **Rwy 5**, 400-1. **Rwy 23**, 600-1. DEPARTURE PROCEDURE: **Rwy 5**, climbing left turn to 3500 via heading 040° to intercept MGW R-015 before proceeding on course. **Rwy 18**, climbing right turn to 2700 via heading 225° before proceeding on course. **Rwy 23**, climbing left turn to 2700 via heading 190° before proceeding on course. **Rwy 36**, climb runway heading to 2700 before proceeding on course.

MOUNDSVILLE, WV

MARSHALL COUNTY (MPG)

TAKEOFF MINIMUMS AND (OBSTACLE)
DEPARTURE PROCEDURES

AMDT 2 14205 (FAA)

TAKEOFF MINIMUMS: **Rwy 6**, std. w/min. climb of 228' per NM to 1900 or 900-2½ for climb in visual conditions. **Rwy 24**, 300-2 or std. w/min. climb of 385' per NM to 1600.

DEPARTURE PROCEDURE: **Rwy 6**, for climb in visual conditions cross Marshall County airport at or above 2000 before proceeding on course. When executing VCOA, notify ATC prior to departure. **Rwy 24**, climb heading 240° to 1700 before turning left.

TAKEOFF OBSTACLE NOTES: **Rwy 6**, trees beginning 6' from DER, 65' left of centerline, up to 68' AGL/1207' MSL. Trees beginning 46' from DER, 391' right of centerline, up to 122' AGL/1237' MSL. Trees beginning 113' from DER, 85' right of centerline, up to 80' AGL/1219' MSL. Trees beginning 156' from DER, 84' left of centerline, up to 48' AGL/1227' MSL. Trees beginning 3967' from DER, 948' left of centerline, up to 100' AGL/1399' MSL. Pole 4755' from DER, 65' left of centerline, 32' AGL/1316' MSL. **Rwy 24**, trees beginning 10' from DER, 371' left of centerline, up to 65' AGL/1244' MSL. Trees beginning 28' from DER, 74' right of centerline, up to 17' AGL/1216' MSL. Trees beginning 116' from DER, 435' left of centerline, up to 98' AGL/1250' MSL. Trees beginning 1349' from DER, 310' left of centerline, up to 112' AGL/1291' MSL. Trees beginning 1644' from DER, 318' right of centerline, up to 78' AGL/1277' MSL. AG equipment 2454' from DER, 729' right of centerline, 54' AGL/1316' MSL. Poles and buildings beginning 2588' from DER, left and right of centerline, up to 55' AGL/1368' MSL. Vehicle on road beginning 2881' from DER, 948' left of centerline, up to 15' AGL/1311' MSL. Buildings and poles beginning 5270' from DER, left and right of centerline, up to 55' AGL/1441' MSL. Transmission towers beginning 5499' from DER, left and right of centerline, up to 104' AGL/1479' MSL.

MILTON, WV

ONA AIRPARK (12V)

TAKEOFF MINIMUMS AND (OBSTACLE)
DEPARTURE PROCEDURES

AMDT 2 08101 (FAA)

TAKEOFF MINIMUMS: **Rwys 7, 25**, 1900-3 climb in visual conditions.

DEPARTURE PROCEDURE: **Rwys 7, 25**, Departure NA at night. For climb in visual conditions: cross Ona Airpark at or above 2300 MSL before proceeding on course. Do not exceed 180 KIAS until crossing Ona Airpark on course.

TAKEOFF OBSTACLE NOTES: **Rwy 7**, trees beginning 730' from DER, 44' left of centerline, up to 100' AGL/1019' MSL. Trees 4879' from DER, 597' right of centerline, up to 100' AGL/999' MSL. Trees beginning 1.8 NM from DER, 2539' left of centerline, up to 100' AGL/1199' MSL. Trees beginning 1.6 NM from DER, 556' right of centerline, up to 100' AGL/1199' MSL. **Rwy 25**, trees beginning 94' from DER, 47' right of centerline, up to 100' AGL/719' MSL. Towers and trees beginning 3016' from DER, 758' left of centerline, up to 125' AGL/822' MSL. Trees beginning 2 NM from DER, 3193' left of centerline, up to 100' AGL/1079' MSL.

MONONGAHELA, PA

ROSTRAVER (FWQ)

TAKEOFF MINIMUMS AND (OBSTACLE)
DEPARTURE PROCEDURES

AMDT 1A 11209 (FAA)

DEPARTURE PROCEDURE: **Rwy 8**, climb heading 076° to 1800 before turning left.

TAKEOFF OBSTACLE NOTES: **Rwy 8**, runway end identifier light and trees beginning 6' from DER, 18' left of centerline, up to 80' AGL/1339' MSL. Runway end identifier light and trees beginning 7' from DER, 1' right of centerline, up to 81' AGL/1310' MSL. **Rwy 26**, runway end identifier light, catenary, antenna, telephone pylons, poles, power lines and trees beginning 1' from DER, 46' left of centerline, up to 107' AGL/1354' MSL. Runway end identifier light, light pole, and trees beginning 6' from DER, 77' right of centerline, up to 49' AGL/1268' MSL.

MOUNT JOY/MARIETTA, PA

DONEGAL SPRINGS AIRPARK (N71)

TAKEOFF MINIMUMS AND (OBSTACLE)
DEPARTURE PROCEDURES

AMDT 2 07354 (FAA)

DEPARTURE PROCEDURE: **Rwy 10**, climb heading 094° to 1300 before turning southwest. **Rwy 28**, climb heading 274° to 1900 before turning south.

TAKEOFF OBSTACLE NOTES: **Rwy 10**, tree 433' from DER, 487' right of centerline, 100' AGL/519' MSL.

**TAKEOFF MINIMUMS, (OBSTACLE) DEPARTURE PROCEDURES, AND
DIVERSE VECTOR AREA (RADAR VECTORS)**

TAKEOFF MINIMUMS, (OBSTACLE) DEPARTURE PROCEDURES, AND DIVERSE VECTOR AREA (RADAR VECTORS)

18088

MOUNT POCONO, PA

POCONO MOUNTAINS MUNI (MPO)

TAKEOFF MINIMUMS AND (OBSTACLE)
DEPARTURE PROCEDURES

AMDT 2 10322 (FAA)

TAKEOFF MINIMUMS: **Rwy 5**, 300-2 or std. w/ min. climb of 234' per NM to 2300. **Rwy 31**, 300-1½ or std. w/ min. climb of 266' per NM to 2200.

DEPARTURE PROCEDURE: **Rwy 5**, climb heading 050° to 2500 before proceeding on course. **Rwy 13**, climb heading 128° to 2500 before proceeding on course. **Rwy 23**, climb heading 230° to 2500 before proceeding on course. **Rwy 31**, climb heading 308° to 2500 before proceeding on course.

TAKEOFF OBSTACLE NOTES: **Rwy 5**, trees beginning 4' from DER, 493' right of centerline, up to 100' AGL/2039' MSL. Trees beginning 19' from DER, 499' left of centerline, up to 100' AGL/2019' MSL. Tower 1.5 NM from DER, 2728' left of centerline, 177' AGL/2200' MSL. Vehicles 754' from DER, 55' left of centerline, up to 100' AGL/1957' MSL. **Rwy 13**, trees beginning 185' from DER, 52' left of centerline, up to 100' AGL/1989' MSL. Trees beginning 1628' from DER, 187' right of centerline, up to 100' AGL/1989' MSL. **Rwy 23**, trees beginning 14' from DER, 347' left of centerline, up to 100' AGL/1945' MSL. Trees beginning 73' from DER, 20' right of centerline, up to 100' AGL/1936' MSL. **Rwy 31**, trees beginning 7' from DER, 287' right of centerline, up to 100' AGL/2079' MSL. Trees beginning 580' from DER, 245' left of centerline, up to 100' AGL/1969' MSL. Railroad tracks 1459' from DER, up to 23' AGL/1903' MSL.

MUIR AAF (KMUI)

FORT INDIANTOWN GAP, PA

TAKEOFF MINIMUMS AND (OBSTACLE)
DEPARTURE PROCEDURES

09015

DEPARTURE PROCEDURE: **Rwy 7**, climbing right turn on 190 bearing from BZJ NDB to 1900 before proceeding on course. **Rwy 25**, climbing left turn on 190 bearing from BZJ NDB to 1800 before proceeding on course.

TAKEOFF OBSTACLE NOTES: **Rwy 7**, Trees 309' from DER, left of centerline, 81' AGL/514' MSL. Trees 2945' from DER, 662' right of centerline, 63' AGL/562' MSL. **Rwy 25**, Tree 26' from DER, 415' right of centerline, 43' AGL/505' MSL. Vehicle on road 280' from DER, 61' left of centerline, 15' AGL/474' MSL. Building 382' from DER, 235' left of centerline, 33' AGL/492' MSL.

MYERSTOWN, PA

DECK (9D4)

TAKEOFF MINIMUMS AND (OBSTACLE)
DEPARTURE PROCEDURES

ORIG 07018 (FAA)

DEPARTURE PROCEDURE: **Rwy 19**, climb heading 174° to 1600 before proceeding on course.

TAKEOFF OBSTACLE NOTES: **Rwy 1**, tree 315' from DER, 579' right of centerline, 41' AGL/570' MSL. Pole 697' from DER, 621' right of centerline, 31' AGL/553' MSL. Tree 878' from DER, 616' right of centerline, 56' AGL/572' MSL.

NEW CASTLE, PA

NEW CASTLE MUNI (UCP)

TAKEOFF MINIMUMS AND (OBSTACLE)
DEPARTURE PROCEDURES

AMDT 1 03079 (FAA)

TAKEOFF MINIMUMS: **Rwy 13**, 300-1 or std. with a min. climb of 350' per NM to 1400.

TAKEOFF OBSTACLE NOTES: **Rwy 5**, tree 785' from DER, 196' right of centerline, 32' AGL/1029' MSL. **Rwy 13**, trees 4087' from DER, 1531' right of centerline, 100' AGL/1249' MSL. Building 262' from DER, 179' left of centerline, 24' AGL/1088' MSL. **Rwy 31**, tree 497' from DER, 18' right of centerline, 28' AGL/1044' MSL.

PALMYRA, PA

REIGLE FIELD (58N)

TAKEOFF MINIMUMS AND (OBSTACLE)
DEPARTURE PROCEDURES

ORIG-A 11349 (FAA)

TAKEOFF MINIMUMS: **Rwys 13, 31**, NA at night. **Rwy 13**, 1000-3 w/min. climb of 373' to 2500 or 1600-2½ for climb in visual conditions.

Rwy 31, 1000-3 or 1600-2½ for climb in visual conditions.

DEPARTURE PROCEDURE: **Rwy 13**, climb heading 127° to 2500 before proceeding on course or for climb in visual conditions: cross Reigle Field Airport at or above 1900 MSL before proceeding on course. **Rwy 31**, climb heading 307° to 2500 before proceeding on course or for climb in visual conditions: cross Reigle Field Airport at or above 1900 MSL before proceeding on course.

TAKEOFF OBSTACLE NOTES: **Rwy 13**, vehicles/buildings/power lines beginning 60' from DER on centerline, up to 200' AGL/699' MSL. Terrain beginning 2 NM from DER, 50' right of centerline, up to 1160' MSL. Signs beginning 165' from DER, 244' right of centerline, up to 9' AGL/501' MSL. **Rwy 31**, buildings/power lines beginning 1250' from DER, on centerline, up to 200' AGL/679' MSL.

PARKERSBURG, WV

MID-OHIO VALLEY RGNL (PKB)

TAKEOFF MINIMUMS AND (OBSTACLE)
DEPARTURE PROCEDURES

AMDT 2 09155 (FAA)

TAKEOFF MINIMUMS: **Rwy 3**, 300-1 or std. w/ min. climb of 451' per NM to 1300. **Rwy 28**, 500-3 or std. w/ min. climb of 295' per NM to 1600.

TAKEOFF OBSTACLE NOTES: **Rwy 3**, trees beginning 253' from DER, 424' left of centerline, up to 100' AGL/1080' MSL. Trees 2615' from DER, 807' right of centerline, 100' AGL/935' MSL. **Rwy 10**, trees beginning 281' from DER, left and right of centerline, up to 100' AGL/889' MSL. **Rwy 21**, trees beginning 513' from DER, 193' right of centerline, up to 100' AGL/952' MSL. Trees beginning 248' from DER, 499' left of centerline, up to 100' AGL/837' MSL. Trees 4457' from DER, 239' right of centerline, 100' AGL/944' MSL. **Rwy 28**, trees beginning 97' from DER, 387' right of centerline, up to 100' AGL/862' MSL.

TAKEOFF MINIMUMS, (OBSTACLE) DEPARTURE PROCEDURES, AND DIVERSE VECTOR AREA (RADAR VECTORS)

18088

NE-4

**TAKEOFF MINIMUMS, (OBSTACLE) DEPARTURE PROCEDURES, AND
DIVERSE VECTOR AREA (RADAR VECTORS)**

18088

PERKASIE, PA**PENNRIDGE (CKZ)**

TAKEOFF MINIMUMS AND (OBSTACLE)

DEPARTURE PROCEDURES

ORIG-A 11125 (FAA)

TAKEOFF MINIMUMS: **Rwy 8**, 300-1. **Rwy 26**, 500-2 ¼
or std. w/min. climb of 252' per NM to 1200.**PETERSBURG, WV****GRANT COUNTY (W99)**

TAKEOFF MINIMUMS AND (OBSTACLE)

DEPARTURE PROCEDURES

AMDT 1 13262 (FAA)

TAKEOFF MINIMUMS: **Rwys 13, 31**, 2400-3 for climb in
visual condition.DEPARTURE PROCEDURE: For climb in visual
conditions, cross Grant County airport Northeast
bound at or above 3200. Then climb to 5000 on ESL R
-214 direct ESL VOR/DME. When executing VCOA,
notify ATC prior to departure.TAKEOFF OBSTACLE NOTES: **Rwy 13**, trees 517'
from DER, 609' left of centerline, up to 70' AGL /1029'
MSL. Trees beginning 3042' from DER, 1304' right of
centerline, up to 100' AGL /1099' MSL. **Rwy 31**, trees
182' from DER, 546' right of centerline, up to 100'
AGL/1099' MSL. Vehicles on road 1651' from DER,
927' right of centerline, up to 15' AGL/1054' MSL.
Building 2553' from DER, 414' right of centerline, 30'
AGL/1029' MSL. Trees beginning 3642' from DER,
651' left of centerline, up to 100' AGL/1139' MSL.**PHILADELPHIA, PA****NORTHEAST PHILADELPHIA (PNE)**

TAKEOFF MINIMUMS AND (OBSTACLE)

DEPARTURE PROCEDURES

ORIG 08045 (FAA)

TAKEOFF MINIMUMS: **Rwy 33**, 200-1¼ or std. w/ min.
climb of 223' per NM to 400, or alternatively, with
standard takeoff minimums and a normal 200'/NM climb
gradient, takeoff must occur no later than 1600' prior to
DER.TAKEOFF OBSTACLE NOTES: **Rwy 6**, Trees 1355' from
DER, 803' left of centerline 58' AGL/179' MSL. Trees
1576' from DER, 835' left of centerline, 44' AGL/165'
MSL. **Rwy 15**, Vehicles on roads beginning 540' from
DER, on centerline, up to 15' AGL/134' MSL. Trees
beginning 592' from DER, 42' left of centerline, up to 74'
AGL/166' MSL. Trees beginning 928' from DER, 213'
right of centerline, up to 64' AGL/173' MSL. **Rwy 24**,
Trees beginning 198' from DER 198' left of centerline, up
to 38' AGL/158' MSL. Vehicle on road 450' from DER, on
centerline, 15' AGL/134' MSL. Tank and trees beginning
2343' from DER, 577' left of centerline, up to 91'
AGL/200' MSL. Bushes and trees beginning 118' from
DER, 182' right of centerline, up to 26' AGL/137' MSL.
Trees beginning 1325' from DER, 220' right of centerline,
up to 77' AGL/197' MSL. **Rwy 33**, Vehicle on road
2050' from DER, on centerline, 15' AGL/174' MSL.
Bushes and trees beginning 491' from DER, 29' left of
centerline, up to 66' AGL/225' MSL. Obstruction light
transmission towers, beginning 5872' from DER, 401' left
of centerline, up to 125' AGL/284' MSL. Bushes and
trees beginning 636' from DER, 185' right of centerline,
up to 57' AGL/215' MSL.

24 MAY 2018 to 21 JUN 2018

24 MAY 2018 to 21 JUN 2018

**TAKEOFF MINIMUMS, (OBSTACLE) DEPARTURE PROCEDURES, AND
DIVERSE VECTOR AREA (RADAR VECTORS)**

18088

NE-4

TAKEOFF MINIMUMS, (OBSTACLE) DEPARTURE PROCEDURES, AND DIVERSE VECTOR AREA (RADAR VECTORS)

18088

PHILADELPHIA, PA (CON'T)

PHILADELPHIA INTL (PHL)

TAKEOFF MINIMUMS AND (OBSTACLE) DEPARTURE PROCEDURES

AMDT 10 17341 (FAA)

TAKEOFF MINIMUMS: **Rwy 26**, NA - ATC. **Rwy 8**, std. w/ min. climb of 300' per NM to 1500. **Rwy 9L**, std. w/ min. climb of 280' per NM to 1500. **Rwy 9R**, std. w/ min. climb of 250' per NM to 1500. **Rwy 17**, 300-1 w/ std. w/ min. climb of 460' per NM to 300. **Rwy 35**, std. w/ min. climb of 280' per NM to 1500.

TAKEOFF OBSTACLE NOTES: **Rwy 8**, fence 164' from DER, 250' right of centerline, 20' AGL/41' MSL. Tree 613' from DER, 434' right of centerline, 74' AGL/74' MSL. Tree 2834' from DER, 701' right of centerline, 114' AGL/119' MSL. Crane 5928' from DER, 194' right of centerline, 197' AGL/208' MSL. Crane 1 NM from DER, 870' left of centerline, 197' AGL/208' MSL. Cranes beginning 1 NM from DER, 219' right of centerline, up to 210' AGL/220' MSL. Crane 1 NM from DER, 593' left of centerline, 206' AGL/215' MSL. Crane 1 NM from DER, 64' left of centerline, 205' AGL/216' MSL. Crane 1.1 NM from DER, 575' left of centerline, 198' AGL/223' MSL. **Rwy 9L**, asde pole 103' from DER, 460' right of centerline, 8' AGL/15' MSL. Tree 592' from DER, 633' left of centerline, 26' MSL. Ship 3543' from DER, 1120' right of centerline, 94' AGL/103' MSL. **Rwy 9R**, app lt 154' from DER, on centerline, 7' AGL/15' MSL. Tree 2173' from DER, 1033' right of centerline, 55' AGL/65' MSL. Tree 2557' from DER, 789' right of centerline, 64' AGL/76' MSL. Ship 3736' from DER, 1217' right of centerline, 109' MSL. Twr 3845' from DER, 1052' right of centerline, 130' AGL/142' MSL. Towers beginning 3887' from DER, 659' right of centerline, up to 140' AGL/144' MSL. **Rwy 17**, terrain 2' from DER, 156' right of centerline, 20' MSL. Terrain 85' from DER, 61' left of centerline, 20' MSL. Terrain 202' from DER, 483' right of centerline, 23' MSL. Tree, pole, lt pole beginning 706' from DER, 340' left of centerline, up to 42' AGL/53' MSL. Trees beginning 943' from DER, 478' left of centerline, up to 56' MSL. Tree, lt pole beginning 985' from DER, 243' left of centerline, up to 51' AGL/61' MSL. Trees beginning 1078' from DER, 221' left of centerline, up to 54' AGL/65' MSL. Tree 1096' from DER, 390' right of centerline, 46' MSL. Tree, lt pole beginning 1123' from DER, 10' left of centerline, up to 64' AGL/76' MSL. Trees beginning 1301' from DER, 128' right of centerline, up to 40' AGL/48' MSL. Trees beginning 1381' from DER, 194' right of centerline, up to 46' AGL/54' MSL. Trees beginning 1387' from DER, 51' right of centerline, up to 48' AGL/55' MSL. Trees beginning 1397' from DER, 29' right of centerline, up to 48' AGL/58' MSL. Trees beginning 1577' from DER, 5' right of centerline, up to 50' AGL/59' MSL. Tree 1742' from DER, 934' right of centerline, 58' AGL/66' MSL. Ship 3096' from DER, 86' left of centerline, 181' AGL/181' MSL. **Rwy 27L**, rwy lt beginning 1' from DER, on centerline, up to 2' AGL/21' MSL. **Rwy 27R**, rwy lt beginning 1' from DER, 5' left of centerline, up to 1' AGL/21' MSL. Tree 256' from DER, 560' right of centerline, 31' MSL. Trees beginning 571' from DER, 479' right of centerline, up to 49' MSL. Tree 690' from DER, 620' left of centerline, 4' AGL/39' MSL. Tree 874' from DER, 609' right of centerline, 39' AGL/54' MSL. Tree 2628' from DER, 1146' right of centerline, 97' AGL/103' MSL. **Rwy 27R**, terrain beginning 2' from DER, 182' right of centerline, up to 20' MSL. Terrain beginning 78' from DER, 111' left of centerline, up to 20' MSL.

PHILADELPHIA, PA (CON'T)

PHILADELPHIA INTL (PHL) (CON'T)

Rwy 35, terrain 3' from DER, 171' left of centerline, 10' MSL. Fence beginning 115' from DER, 382' left of centerline, up to 10' AGL/17' MSL. Pole 341' from DER, 360' left of centerline, 23' AGL/29' MSL. Fence 444' from DER, 2' right of centerline, 13' AGL/20' MSL. Lt pole 479' from DER, 586' right of centerline, 25' AGL/29' MSL. Pole, tree beginning 594' from DER, 558' left of centerline, up to 53' AGL/58' MSL. Pole, lt pole beginning 758' from DER, 95' right of centerline, up to 25' AGL/31' MSL. Building 851' from DER, 728' right of centerline, 25' AGL/36' MSL. Pole, tree, lt pole beginning 1072' from DER, 91' right of centerline, up to 47' AGL/52' MSL. Sign, lt pole beginning 1302' from DER, 174' left of centerline, up to 40' AGL/59' MSL. Sign, vehicle on road, tree beginning 1396' from DER, 644' right of centerline, up to 37' AGL/61' MSL. Tree, pole, figlt, building, chimney/ smokestack beginning 1853' from DER, 92' right of centerline, up to 78' AGL/85' MSL. Trees beginning 2256' from DER, 617' left of centerline, up to 81' MSL. Tree 2579' from DER, 854' left of centerline, 95' MSL. Pole 2647' from DER, 1177' left of centerline, 120' AGL/125' MSL. Pole beginning 2649' from DER, 784' left of centerline, up to 122' AGL/128' MSL. Pole 3881' from DER, 644' right of centerline, 105' AGL/111' MSL. Pole 4064' from DER, 922' right of centerline, 118' AGL/125' MSL. T-L twr 4245' from DER, 1201' right of centerline, 120' AGL/129' MSL.

WINGS FIELD (LOM)

TAKEOFF MINIMUMS AND (OBSTACLE)

DEPARTURE PROCEDURES

AMDT 2 10266 (FAA)

DEPARTURE PROCEDURE: **Rwy 24**, climb heading 245° to 1100 before turning left.

TAKEOFF OBSTACLE NOTES: **Rwy 6**, trees beginning 54' from DER, 103' left of centerline, up to 106' AGL/389' MSL. Trees beginning 513' from DER, 110' right of centerline, up to 107' AGL/347' MSL. **Rwy 24**, multiple trees, towers, buildings, flag poles, vehicles on road, and rising terrain beginning at DER, left and right of centerline, up to 160' AGL/444' MSL.

PHILIPPI, WV

PHILIPPI/BARBOUR COUNTY RGNL (79D)

TAKEOFF MINIMUMS AND (OBSTACLE)

DEPARTURE PROCEDURES

ORIG 08157 (FAA)

DEPARTURE PROCEDURE: **Rwy 8**, climb heading 083° to 3300 before turning south.

TAKEOFF OBSTACLE NOTES: **Rwy 8**, trees beginning 108' from DER, 118' right of centerline, up to 100' AGL/1799' MSL. **Rwy 26**, trees beginning 504' from DER, 220' left of centerline, up to 100' AGL/1779' MSL.

TAKEOFF MINIMUMS, (OBSTACLE) DEPARTURE PROCEDURES, AND DIVERSE VECTOR AREA (RADAR VECTORS)

18088

NE-4

24 MAY 2018 to 21 JUN 2018

24 MAY 2018 to 21 JUN 2018

**TAKEOFF MINIMUMS, (OBSTACLE) DEPARTURE PROCEDURES, AND
DIVERSE VECTOR AREA (RADAR VECTORS)**

18088

PHILIPSBURG, PA**MID-STATE (PSB)****TAKEOFF MINIMUMS AND (OBSTACLE)
DEPARTURE PROCEDURES**

AMDT 2 13066 (FAA)

TAKEOFF MINIMUMS: **Rwy 6**, std. w/min. climb of 238' per NM to 2600 or 1000-3 for climb in visual conditions. **Rwy 16**, 400-2 or std. w/min. climb of 317' per NM to 2500. **Rwy 24**, 800-3 or std. w/min. climb of 308' per NM to 2400.

DEPARTURE PROCEDURE: **Rwy 6**, climbing left turn heading 340° to 2900 before proceeding on course or for climb in visual conditions: Cross Mid-State airport at or above 2900 before proceeding on course. When executing VCOA, notify ATC prior to departure. **Rwy 16**, climb on heading 167° to 2800 before proceeding on course. **Rwy 24**, climb on heading 241° to 2800 before proceeding on course. **Rwy 34**, climb on heading 347° to 2800 before proceeding on course.

TAKEOFF OBSTACLE NOTES: **Rwy 6**, tree 24' from DER, 269' right of centerline, 50' AGL/1959' MSL. Trees beginning 201' from DER, 250' right of centerline, up to 50 AGL/1951' MSL. Tree 336' from DER, 14' left of centerline, 60' AGL/1950' MSL. Tree 439' from DER, 182' right of centerline, 60' AGL/1947' MSL. Trees beginning 522' from DER, 14' left of centerline, up to 60' AGL/1950' MSL. **Rwy 16**, trees beginning 7' from DER, 493' right of centerline, up to 80' AGL/2004' MSL. Trees beginning 51' from DER, 303' left of centerline, up to 80' AGL/1995' MSL. Pole 1.1 NM from DER, 103' left of centerline, 72' AGL/2097' MSL. Trees 1.1 NM from DER, 98' left of centerline, up to 100' AGL/2309' MSL. Pole 1.6 NM from DER, 84' AGL/2263' MSL. **Rwy 24**, tree 83' from DER, 442' left of centerline, 60' AGL/1952' MSL. Trees beginning 165' from DER, 442' left of centerline, up to 60' AGL/1900' MSL. Trees beginning 172' from DER, 95' right of centerline, up to 60' AGL/1890' MSL. Trees beginning 972' from DER, 470' right of centerline, up to 80' AGL/1952' MSL. Trees beginning 4367' from DER, 230' right of centerline, up to 80' AGL/2079' MSL. Tree 1.6 NM from DER, 400' right of centerline, 100' AGL/2122' MSL. **Rwy 34**, vehicles 70' from DER, 457' right of centerline, 15' AGL/1969' MSL. Trees beginning 494' from DER, 518' left of centerline, up to 40' AGL/1993' MSL. Tree 847' from DER, 651' right of centerline. 80' AGL/1972' MSL.

PITTSBURGH, PA**ALLEGHENY COUNTY (AGC)****TAKEOFF MINIMUMS AND (OBSTACLE)
DEPARTURE PROCEDURES**

AMDT 9 18032 (FAA)

TAKEOFF MINIMUMS: **Rwy 13**, std. w/ min. climb of 205' per NM to 1800 or 900-2½ for VCOA.

VCOA: **Rwy 13**, obtain ATC approval for VCOA when requesting IFR clearance. Climb in visual conditions to cross Allegheny County Airport at or above 2000 before proceeding on course.

TAKEOFF OBSTACLE NOTES: **Rwy 10**, vertical point 2' from DER, 75' right of centerline, 1' AGL/1251' MSL. Tree 3525' from DER, 746' left of centerline, 85' AGL/1341' MSL. Tree 3750' from DER, 578' left of centerline, 67' AGL/1350' MSL. Tree 3786' from DER, 518' left of centerline, 72' AGL/1353' MSL. **Rwy 13**, pole 175' from DER, 335' right of centerline, 26' AGL/1264' MSL. Tree 362' from DER, 295' right of centerline, 53' AGL/1288' MSL. Vertical point 460' from DER, 588' right of centerline, 60' AGL/1296' MSL. Tree 912' from DER, 527' right of centerline, 73' AGL/1312' MSL. **Rwy 31**, light 10' from DER, 87' right of centerline, 4' AGL/1246' MSL. Poles beginning 264' from DER, 298' right of centerline, 38' AGL/1263' MSL.

24 MAY 2018 to 21 JUN 2018

24 MAY 2018 to 21 JUN 2018

PINEVILLE, WV**KEE FIELD (I16)****TAKEOFF MINIMUMS AND (OBSTACLE)
DEPARTURE PROCEDURES**

AMDT 1 98113 (FAA)

TAKEOFF MINIMUMS: **Rwy 8**, 700-2.**Rwy 26**, 600-1.

DEPARTURE PROCEDURE: **Rwys 8, 26**, climb runway heading to 3000 before proceeding on course.

TAKEOFF OBSTACLE NOTES: **Rwy 8**, 86' trees/terrain 2100' from departure end on centerline.

Rwy 26, 135' trees/terrain 1300' from departure end on centerline.

**TAKEOFF MINIMUMS, (OBSTACLE) DEPARTURE PROCEDURES, AND
DIVERSE VECTOR AREA (RADAR VECTORS)**

18088

NE-4

TAKEOFF MINIMUMS, (OBSTACLE) DEPARTURE PROCEDURES, AND DIVERSE VECTOR AREA (RADAR VECTORS)

18088

PITTSBURGH, PA (CON'T)

PITTSBURGH INTL(PIT)

TAKEOFF MINIMUMS AND (OBSTACLE) DEPARTURE PROCEDURES

AMDT 5 16259 (FAA)

TAKEOFF MINIMUMS: **Rwy 10L**, 300-1¼ or std. w/min. climb of 215' per NM to 1400, or alternatively, with standard takeoff minimums and a normal 200' per NM climb gradient, takeoff must occur no later than 1400' prior to DER. **Rwy 32**, 300-1½ or std. w/ min. climb of 255' per NM to 1500.

TAKEOFF OBSTACLE NOTES: **Rwy R10C**, pole 24' from DER, 300' left of centerline, 3' AGL/1140' MSL. Tree 2605' from DER, 461' left of centerline, 1222' MSL. Tree 3174' from DER, 747' left of centerline, 1255' MSL. Trees beginning 3221' from DER, 911' left of centerline, up to 1263' MSL. Trees beginning 4539' from DER, 1348' right of centerline, up to 52' AGL/1255' MSL. Tree 4700' from DER, 1489' right of centerline, 50' AGL/1257' MSL. Tree 4728' from DER, 1504' right of centerline, 1261' MSL. Tree 4739' from DER, 1629' right of centerline, 68' AGL/1263' MSL. Tree 4918' from DER, 1450' right of centerline, 69' AGL/1264' MSL. Tree 4963' from DER, 1298' right of centerline, 77' AGL/1266' MSL. Tree 4976' from DER, 1363' right of centerline, 74' AGL/1268' MSL. **Rwy 10L**, vertical structures beginning 24' from DER, 5' right of centerline, up to 2' AGL/1175' MSL. Vertical structures beginning 24' from DER, 4' left of centerline, up to 2' AGL/1175' MSL. Aircraft on ramps beginning 199' from DER, 250' right of centerline, up to 64' AGL/1232' MSL. Tree 1380' from DER, 724' left of centerline, 70' AGL/1229' MSL. Trees beginning 1386' from DER, 672' left of centerline, up to 1233' MSL. Tower 4175' from DER, 863' left of centerline, 112' AGL/1282' MSL. Water tower 1.0 NM from DER, 1786' right of centerline, 200' AGL/1340' MSL. **Rwy 10R**, vertical structures beginning 9' from DER, 40' right of centerline, up to 2' AGL/1123' MSL. Vertical structures beginning 9' from DER, 40' left of centerline, up to 2' AGL/1124' MSL. Street sign 55' from DER, 307' left of centerline, 3' AGL/1125' MSL. Tree 415' from DER, 586' left of centerline, 10' AGL/1137' MSL. Tree 2905' from DER, 673' left of centerline, 1200' MSL. Trees beginning 4568' from DER, 1146' right of centerline, up to 1252' MSL. Poles beginning 4587' from DER, 1124' left of centerline, up to 49' AGL/1241' MSL. Trees beginning 4595' from DER, 151' right of centerline, up to 70' AGL/1255' MSL. Trees beginning 5041' from DER, 101' right of centerline, up to 50' AGL/1257' MSL. Tree 5069' from DER, 306' right of centerline, 1261' MSL. Trees beginning 5080' from DER, 296' right of centerline, up to 68' AGL/1263' MSL. Tree 5103' from DER, 35' left of centerline, 62' AGL/1251' MSL. Tree 5259' from DER, 252' right of centerline, 69' AGL/1264' MSL. Tree 5304' from DER, 101' right of centerline, 77' AGL/1266' MSL. Tree 5317' from DER, 165' right of centerline, 74' AGL/1268' MSL. **Rwy 28C**, poles beginning 123' from DER, 498' right of centerline, up to 41' AGL/1149' MSL. Aircraft on taxiways beginning 267' from DER, 489' right of centerline, up to 64' AGL/1208' MSL. **Rwy 28L**, tree 2' from DER, 497' left of centerline, 46' AGL/1137' MSL. Tree 39' from DER, 497' left of centerline, 1144' MSL. Tree 2271' from DER, 1109' left of centerline, 1223' MSL.

PITTSBURGH, PA (CON'T)

PITTSBURGH INTL(PIT) (CON'T)

Rwy 28R, vertical structures beginning 9' from DER, 4' left of centerline, up to 1' AGL/1204' MSL. Vertical structures beginning 9' from DER, on centerline, up to 1' AGL/1204' MSL. Tree 21' from DER, 490' right of centerline, 19' AGL/1214' MSL. Bush 71' from DER, 477' right of centerline, 1215' MSL. Pole 643' from DER, 632' left of centerline, 25' AGL/1223' MSL. Tree 1808' from DER, 912' right of centerline, 1273' MSL. **Rwy 32**, vertical structures beginning 10' from DER, 54' right of centerline, up to 2' AGL/1149' MSL. Vertical structures beginning 10' from DER, 55' left of centerline, up to 2' AGL/1149' MSL. Tree 80' from DER, 376' left of centerline, 40' AGL/1151' MSL. Pole 453' from DER, 515' right of centerline, 37' AGL/1173' MSL. Aircraft on taxiway 1372' from DER, 8' right of centerline, 64' AGL/1214' MSL. Aircraft on taxiways beginning 1612' from DER, 13' right of centerline, up to 64' AGL/1216' MSL. Aircraft on taxiway 1989' from DER, 190' left of centerline, 64' AGL/1224' MSL. Aircraft on taxiway and tree beginning 2166' from DER, 8' right of centerline, up to 64' AGL/1221' MSL. Aircraft on taxiway 2213' from DER, 352' left of centerline, 64' AGL/1226' MSL. Tree 2575' from DER, 1097' right of centerline, 70' AGL/1229' MSL. Tree 2577' from DER, 1107' right of centerline, 1233' MSL. Aircraft on taxiways beginning 2580' from DER, 425' left of centerline, up to 64' AGL/1233' MSL. Aircraft on taxiway 2942' from DER, 836' left of centerline, 64' AGL/1235' MSL. Tree 2943' from DER, 1213' right of centerline, 73' AGL/1247' MSL. Trees beginning 5831' from DER, 1271' right of centerline, up to 83' AGL/1336' MSL. Tower 1.1 NM from DER, 514' left of centerline, 95' AGL/1341' MSL. Tower 1.1 NM from DER, 436' left of centerline, 106' AGL/1354' MSL. Communication tower 1.1 NM from DER, 436' left of centerline, 102' AGL/1349' MSL.

POINT PLEASANT, WV

MASON COUNTY (312)

TAKEOFF MINIMUMS AND (OBSTACLE) DEPARTURE PROCEDURES

AMDT 4A 16035 (FAA)

TAKEOFF MINIMUMS: **Rwy 7**, 300-1½ or std. w/min. climb of 212' per NM to 900, or alternatively, with standard takeoff minimums and a normal 200' per NM climb gradient, takeoff must occur no later than 1500' prior to DER. **Rwy 25**, 400-2½.

DEPARTURE PROCEDURE: **Rwy 7**, climb heading 082° to 1500 before proceeding on course. **Rwy 25**, climb heading 252° to 2000 before turning right.

TAKEOFF OBSTACLE NOTES: **Rwy 7**, trees beginning 13' from DER, 242' left of centerline, up to 70' AGL/709' MSL. Trees beginning 95' from DER, 179' right of centerline, up to 67' AGL/706' MSL. Trees 1.3 NM from DER, 442' right of centerline, up to 53' AGL/832' MSL. **Rwy 25**, trees beginning abeam DER, 255' left of centerline, up to 100' AGL/759' MSL. Vehicles on road and trees beginning 292' from DER, 20' right of centerline, up to 100' AGL/739' MSL. Trees 143' from DER, 490' left of centerline, up to 100' AGL/799' MSL. Tower 2.1 NM from DER, 598' right of centerline, 155' AGL/964' MSL.

24 MAY 2018 to 21 JUN 2018

24 MAY 2018 to 21 JUN 2018

TAKEOFF MINIMUMS, (OBSTACLE) DEPARTURE PROCEDURES, AND DIVERSE VECTOR AREA (RADAR VECTORS)

18088

NE-4

**TAKEOFF MINIMUMS, (OBSTACLE) DEPARTURE PROCEDURES, AND
DIVERSE VECTOR AREA (RADAR VECTORS)**

18088

POTTSTOWN, PA

HERITAGE FIELD (PTW)
TAKEOFF MINIMUMS AND (OBSTACLE)
DEPARTURE PROCEDURES
AMDT 2A 09323 (FAA)
TAKEOFF MINIMUMS: **Rwy 10**, 300-1¼ or std. w/ a
min. climb of 290' per NM to 600. **Rwy 28**, 500-2.
DEPARTURE PROCEDURE: **Rwy 28**, climb heading
276° to 900 before proceeding on course.

POTTSTOWN MUNI (N47)

TAKEOFF MINIMUMS AND (OBSTACLE)
DEPARTURE PROCEDURES
AMDT 2A 09295 (FAA)
TAKEOFF MINIMUMS: **Rwy 8**, std. w/ min. climb of 414'
per NM to 1300, or 600-3 w/ min. climb of 241' per NM
to 1300, or 1300-2½ for climb in visual conditions.
Rwy 26, std. w/ min. climb of 288' per NM to 1600 or
1300-2½ for climb in visual conditions.
DEPARTURE PROCEDURE: **Rwy 8**, climb heading
076° to 1300 before proceeding on course. For climb
in visual conditions: cross Pottstown Muni Airport at or
above 1400 MSL before proceeding on course. **Rwy 26**,
climb heading 271° to 1100 before proceeding on
course. For climb in visual conditions: cross
Pottstown Muni Airport at or above 1400 MSL before
proceeding on course.

TAKEOFF OBSTACLE NOTES: **Rwy 8**, terrain 2761'
from DER, 124' right of centerline, 0' AGL/319' MSL.
Multiple trees beginning 5919' from DER, 854' left of
centerline, up to 100' AGL/559' MSL. Multiple trees
beginning 1.3 NM from DER, 616' right of centerline,
up to 100' AGL/759' MSL. **Rwy 26**, tree 400' from
DER, on centerline, 35' AGL/295' MSL. Terrain 10'
from DER, 246' left of centerline, 0' AGL/279' MSL.
Tree 399' from DER, on centerline, up to 100'
AGL/295' MSL. Multiple trees beginning 1 NM from
DER, 2009' right of centerline, up to 100' AGL/579'
MSL.

POTTSVILLE, PA

SCHUYKILL COUNTY/JOE ZERBEY (ZER)
TAKEOFF MINIMUMS AND (OBSTACLE)
DEPARTURE PROCEDURES
AMDT 2 09239 (FAA)
TAKEOFF MINIMUMS: **Rwys 4, 22**, NA-Environmental.
TAKEOFF OBSTACLE NOTES: **Rwy 11**, tree 88' from
DER, 467' left of centerline, 23' AGL/1723' MSL. Tree
358' from DER, 545' right of centerline, 100' AGL/1779'
MSL. **Rwy 29**, tree 433' from DER, 151' left of
centerline, 100' AGL/1819' MSL. Tree 460' from DER,
263' right of centerline, 100' AGL/1819' MSL. Bush 86'
from DER, 236' right of centerline, 7' AGL/1746' MSL.

PUNXSUTAWNEY, PA

PUNXSUTAWNEY MUNI (N35)
TAKEOFF MINIMUMS AND (OBSTACLE)
DEPARTURE PROCEDURES
AMDT 3 11069 (FAA)
TAKEOFF MINIMUMS: **Rwy 1A**, NA-obstacles.
Rwy 6, 400-2½ or std. w/min. climb of 344' per NM to
2000. **Rwy 19**, 500-2¼ or std. w/ min. climb of 285' per
NM to 2000.
DEPARTURE PROCEDURE: **Rwy 6**, climb on heading
067° to 2000 before proceeding on course. **Rwy 19**,
climb on heading 188° to 2400 before proceeding on
course. **Rwy 24**, climb on heading 247° to 2300 before
proceeding on course.
TAKEOFF OBSTACLE NOTES: **Rwy 6**, aircraft on
taxiway 4' from DER, 171' right of centerline, up to 10'
AGL/1447' MSL. Trees beginning 285' from DER, 304'
left of centerline, up to 100' AGL/1542' MSL. Vehicle on
road 505' from DER, 304' left of centerline, up to 15'
AGL/1457' MSL. Building 732' from DER, 685' right of
centerline, up to 40' AGL/1480' MSL. Vehicle on road
733' from DER, 352' right of centerline, up to 15'
AGL/1457' MSL. Trees beginning 1252' from DER, 417'
right of centerline, up to 100' AGL/1499' MSL. **Rwy 19**,
trees beginning 8' from DER, 154' right of centerline, up
to 100' AGL/1539' MSL. Building 43' from DER, 373' left
of centerline, up to 20' AGL/1459' MSL. Trees beginning
169' from DER, 390' left of centerline, up to 100'
AGL/1539' MSL. **Rwy 24**, buildings beginning 192' from
DER, 57' right of centerline, up to 30' AGL/1489' MSL.
Trees beginning 232' from DER, 174' left of centerline,
up to 100' AGL/1510' MSL. Trees beginning 1015' from
DER, 310' right of centerline, up to 100' AGL/1559' MSL.

QUAKERTOWN, PA

QUAKERTOWN (UKT)
TAKEOFF MINIMUMS AND (OBSTACLE)
DEPARTURE PROCEDURES
AMDT 1 12180 (FAA)
TAKEOFF MINIMUMS: **Rwy 29**, 300-1 or std. w/min. climb
of 730' per NM to 800.
TAKEOFF OBSTACLE NOTES: **Rwy 11**, multiple trees,
structures and poles beginning 19' from DER, 1300' left
of centerline to 1385' right of centerline, up to 100'
AGL/639' MSL. **Rwy 29**, multiple trees, structures and
poles beginning 27' from DER, 1329' left of centerline to
1049' right of centerline, up to 100' AGL/691' MSL.

RAVENSWOOD, WV

JACKSON COUNTY (118)
TAKEOFF MINIMUMS AND (OBSTACLE)
DEPARTURE PROCEDURES
AMDT 2 11237 (FAA)
TAKEOFF MINIMUMS: **Rwy 4**, 300-2 or std. w/min. climb
of 225' per NM to 1200.
DEPARTURE PROCEDURE: **Rwy 4**, climb heading 037°
to 1300 before turning west. **Rwy 22**, climb heading 217°
to 1300 before turning north.
TAKEOFF OBSTACLE NOTES: **Rwy 4**, trees beginning
2137' from DER, 539' right of centerline, up to 100'
AGL/890' MSL. Trees beginning 1.6 NM from DER, 517'
left of centerline, up to 100' AGL/1019' MSL. **Rwy 22**,
trees beginning 6' from DER, 476' right of centerline up to
100' AGL/802' MSL. Trees beginning 2528' from DER
774' left of centerline, up to 100' AGL/879' MSL.

**TAKEOFF MINIMUMS, (OBSTACLE) DEPARTURE PROCEDURES, AND
DIVERSE VECTOR AREA (RADAR VECTORS)**

18088

NE-4

24 MAY 2018 to 21 JUN 2018

24 MAY 2018 to 21 JUN 2018

TAKEOFF MINIMUMS, (OBSTACLE) DEPARTURE PROCEDURES, AND DIVERSE VECTOR AREA (RADAR VECTORS)

18088

READING, PA

READING RGNL/CARL A. SPAATZ FIELD
(RDG)

TAKEOFF MINIMUMS AND (OBSTACLE)
DEPARTURE PROCEDURES

AMDT 5 14149 (FAA)

TAKEOFF MINIMUMS: **Rwy 13**, std. w/min. climb of 434' per NM to 1700. **Rwy 31**, 500-2½ or std. w/min. climb of 413' per NM to 900. **Rwy 36**, 400-2 or std. w/min. climb of 351' per NM to 800.

DEPARTURE PROCEDURE: **Rwy 18**, climb heading 184° to 1400 before turning left. **Rwy 31**, climb heading 313° to 900 before turning right. **Rwy 36**, climb heading 004° to 1100 before turning right.

TAKEOFF OBSTACLE NOTES: **Rwy 13**, building and antenna beginning 67' from DER, 377' right of centerline, up to 41' AGL/373' MSL. Trees beginning 484' from DER, left and right of centerline, up to 122' AGL/398' MSL. **Rwy 18**, vertical structure, 61' from DER, 488' right of centerline, up to 6' AGL/352' MSL. Vehicles on road beginning 112' from DER, 380' right of centerline, up to 15' AGL/361' MSL. Trees beginning 780' from DER, 406' left of centerline, up to 86' AGL/385' MSL. **Rwy 31**, trees beginning 1318' from DER, left and right of centerline, up to 67' AGL/776' MSL. **Rwy 36**, trees beginning 103' from DER, left and right of centerline, up to 87' AGL/410' MSL.

REEDSVILLE, PA

MIFFLIN COUNTY (RVL)

TAKEOFF MINIMUMS AND (OBSTACLE)
DEPARTURE PROCEDURES

AMDT 3 08157 (FAA)

TAKEOFF MINIMUMS: **Rwy 6**, std. w/min. climb of 287' per NM to 3000 or 2200-3 for climb in visual conditions. **Rwy 24**, std. w/min. climb of 242' per NM to 2800 or 2200-3 for climb in visual conditions.

DEPARTURE PROCEDURE: **Rwy 6**, climb heading 059° to 3000 before proceeding on course or for climb in visual conditions cross Mifflin County Airport at or above 3000 MSL before proceeding on course. **Rwy 24**, climb heading 239° to 2800 before proceeding on course or for climb in visual conditions cross Mifflin County Airport at or above 3000 MSL before proceeding on course.

TAKEOFF OBSTACLE NOTES: **Rwy 6**, fence beginning 59' from DER, 497' right of centerline, up to 6' AGL/825' MSL. Bushes 449' from DER, 422' right of centerline, up to 10' AGL/829' MSL. **Rwy 24**, ground 171' from DER, 481' left of centerline, 0' AGL/830' MSL. Fence 207' from DER, 288' left of centerline, 15' AGL/834' MSL. Trees 1189' from DER, 198' right of centerline, up to 100' AGL/933' MSL. Trees 2,168' from DER, 407' left of centerline, up to 100' AGL/908' MSL.

ST. MARYS, PA

ST. MARYS MUNI (OYM)

TAKEOFF MINIMUMS AND (OBSTACLE)
DEPARTURE PROCEDURES

AMDT 2 05188 (FAA)

TAKEOFF OBSTACLE NOTES: **Rwy 10**, terrain and trees 3833' from DER, right and left of centerline, 100' AGL/2119' MSL. **Rwy 28**, terrain and trees 1926' from DER, right and left of centerline, 100' AGL/1979' MSL; terrain and trees 3754' from DER, right and left of centerline, 100' AGL/2000' MSL.

SELINGSGROVE, PA

PENN VALLEY (SEG)

TAKEOFF MINIMUMS AND (OBSTACLE)
DEPARTURE PROCEDURES

AMDT 3A 18032 (FAA)

TAKEOFF MINIMUMS: **Rwy 17**, std. w/min. climb of 500' per NM to 1500 or 1500-2½ for VCOA. **Rwy 35**, 500-2 w/min. climb of 500' per NM to 1300 or 1500-2½ for VCOA. DEPARTURE PROCEDURE: **Rwy 17**, climbing right turn direct SEG VOR/DME before proceeding on course. Do not exceed 180K until SEG VOR/DME. **Rwy 35**, climb heading 350° to 1900 before proceeding on course. VCOA: All runways, obtain ATC approval for VCOA when requesting IFR clearance. Climb in visual conditions to cross Penn Valley Airport at or above 1800 before proceeding on course.

TAKEOFF OBSTACLE NOTES: **Rwy 17**, trees beginning 1.8 NM from DER, 1068' left of centerline, up to 100' AGL/919' MSL. Trees beginning 29' from DER, 151' left of centerline, up to 100' AGL/559' MSL. Pole 2520' from DER, 84' right of centerline, 58' AGL/508' MSL. **Rwy 35**, trees beginning 273' from DER, 75' left of centerline, up to 100' AGL/539' MSL. Trees beginning 1947' from DER, 624' right of centerline, up to 100' AGL/899' MSL.

SHAMOKIN, PA

NORTHUMBERLAND COUNTY (N79)

TAKEOFF MINIMUMS AND (OBSTACLE)
DEPARTURE PROCEDURES

AMDT 2A 18032 (FAA)

TAKEOFF MINIMUMS: **Rwy 8**, 400-2 or std. w/min. climb of 540' per NM to 1600. **Rwy 26**, 400-2½ or std. w/min. climb of 270' per NM to 1400.

DEPARTURE PROCEDURE: **Rwy 8**, climb to 1600 then climbing left turn to 4000 direct SEG VOR/DME. **Rwy 26**, climb to 1400 then climb to 4000 on SEG R-088 to SEG VOR/DME.

TAKEOFF OBSTACLE NOTES: **Rwy 8**, trees beginning 33' from DER, 366' left of centerline, up to 70' AGL/950' MSL. Pole 68' from DER, 459' right of centerline, 39' AGL/910' MSL. Vehicles on roadway beginning 279' from DER, left and right of centerline, up to 15' AGL/952' MSL. Trees beginning 1548' from DER, 197' left of centerline, up to 80' AGL/1171' MSL. Buildings beginning 2631' from DER, 870' left of centerline, up to 38' AGL/1164' MSL. Fence beginning 5683' from DER, 1796' left of centerline, up to 6' AGL/1099' MSL. Pole 1.1 NM from DER, 1662' left of centerline, 23' AGL/1091' MSL. **Rwy 26**, trees beginning 10' from DER, 242' left of centerline, up to 13' AGL/865' MSL. Trees beginning 84' from DER, 184' right of centerline, up to 20' AGL/872' MSL. Trees beginning 2.1 NM from DER, 2621' right of centerline, up to 80' AGL/1240' MSL.

TAKEOFF MINIMUMS, (OBSTACLE) DEPARTURE PROCEDURES, AND DIVERSE VECTOR AREA (RADAR VECTORS)

18088

NE-4

**TAKEOFF MINIMUMS, (OBSTACLE) DEPARTURE PROCEDURES, AND
DIVERSE VECTOR AREA (RADAR VECTORS)**

18088

SOMERSET, PA**SOMERSET COUNTY (2G9)****TAKEOFF MINIMUMS AND (OBSTACLE)
DEPARTURE PROCEDURES**

AMDT 2 07354 (FAA)

TAKEOFF MINIMUMS: **Rwy 14,32**, NA-environmental.
DEPARTURE PROCEDURE: **Rwy 7**, climb heading
066° to 3000 before turning south. **Rwy 23**, climb
heading 246° to 2800 before turning south.

TAKEOFF OBSTACLE NOTES: **Rwy 7**, trees beginning
57' from DER, 178' right of centerline, up to 79'
AGL/2285' MSL. Tree 1291' from DER, 76' left of
centerline, 59' AGL/2238' MSL. Buildings beginning
639' from DER, 348' left of centerline, up to 40'
AGL/2222' MSL. **Rwy 23**, trees beginning 480' from
DER, 152' right of centerline, up to 67' AGL/2346'
MSL. Antenna on building 283' from DER, 204' right of
centerline, 30' AGL/2290' MSL. Tree 584' from DER,
211' left of centerline, 55' AGL/2297' MSL. Obstruction
light on localizer 291' from DER, on centerline, 20'
AGL/2284' MSL.

SPENCER, WV**BOGGS FIELD (USW)****TAKEOFF MINIMUMS AND (OBSTACLE)
DEPARTURE PROCEDURES**

AMDT 1 12264 (FAA)

TAKEOFF MINIMUMS: **Rwy 10**, 300-2 or std. w/min.
climb of 447' per NM to 1300. **Rwy 28**, 400-2½ or std.
w/ min. climb of 332' per NM to 1400.

DEPARTURE PROCEDURE: **Rwy 10**, climb heading
100° to 1400 before proceeding on course. **Rwy 28**,
climb heading 280° to 1600 before turning south.

TAKEOFF OBSTACLE NOTES: **Rwy 10**, vegetation
beginning 14' from DER, left and right of centerline, up
to 13' AGL/932' MSL. Terrain and trees beginning
2060' from DER, 3' right of centerline, up to 60'
AGL/1079' MSL. Terrain, trees and buildings beginning
3169' from DER, 14' left of centerline, up to 60'
AGL/1079' MSL. Tree 4288' from DER, 236' right of
centerline, up to 88' AGL/1167' MSL. Tree 1.2 NM
from DER, 1867' left of centerline, up to 35' AGL/1194'
MSL. Tree 1.7 NM from DER, 1510' right of centerline,
up to 63' AGL/1182' MSL. **Rwy 28**, terrain, trees,
fences and pole beginning 13' from DER, 17' right of
centerline, up to 74' AGL/1073' MSL. Trees beginning
764' from DER, 14' left of centerline, up to 76'
AGL/1055' MSL. Tree 3587' from DER, 1432' right of
centerline, up to 82' AGL/1081' MSL. Tree 1.8 NM
from DER, 3390' left of centerline, up to 63' AGL/1242'
MSL. Tree 2 NM from DER, 3063' left of centerline, up
to 63' AGL/1252' MSL.

STATE COLLEGE, PA**UNIVERSITY PARK (UNV)****TAKEOFF MINIMUMS AND (OBSTACLE)
DEPARTURE PROCEDURES**

AMDT 4 98309 (FAA)

TAKEOFF MINIMUMS: **Rwys 16,34**, NA.

DEPARTURE PROCEDURE: **Rwys 6,24**, climb runway
heading to 2600 before proceeding on course.

STERLING, PA**SPRING HILL (70N)****TAKEOFF MINIMUMS AND (OBSTACLE)
DEPARTURE PROCEDURES**

AMDT 1 09323 (FAA)

TAKEOFF MINIMUMS: **Rwy 23**, 600-3 with min. climb of
240' per NM to 2600 or 1000-3 for climb in visual
conditions.

DEPARTURE PROCEDURE: **Rwy 23**, climb heading
232° to 2500 before proceeding on course or for climb in
visual conditions: cross Spring Hill airport at or above
2600 MSL before proceeding on course.

TAKEOFF OBSTACLE NOTES: **Rwy 5**, trees beginning
333' from DER, 271' left of centerline, up to 100'
AGL/1719' MSL. Building and trees beginning 259' from
DER, 265' right of centerline, up to 100' AGL/1799' MSL.
Rwy 23, trees beginning 51' from DER, 202 left of
centerline, up to 100' AGL/1859' MSL. terrain and trees
beginning 482' from DER, 195' right of centerline, up to
100' AGL/1879' MSL.

SUMMERSVILLE, WV**SUMMERSVILLE (SXL)****TAKEOFF MINIMUMS AND (OBSTACLE)
DEPARTURE PROCEDURES**

AMDT 3A 11097 (FAA)

TAKEOFF MINIMUMS: **Rwy 4**, 400-1 or std. w/min. climb
of 350' per NM to 3000.

DEPARTURE PROCEDURE: **Rwy 4**, climb heading 044°
to 2900 before proceeding on course. **Rwy 22**, climb
heading 224° to 2400 before proceeding on course.

24 MAY 2018 to 21 JUN 2018

24 MAY 2018 to 21 JUN 2018

**TAKEOFF MINIMUMS, (OBSTACLE) DEPARTURE PROCEDURES, AND
DIVERSE VECTOR AREA (RADAR VECTORS)**

18088

NE-4

TAKEOFF MINIMUMS, (OBSTACLE) DEPARTURE PROCEDURES, AND DIVERSE VECTOR AREA (RADAR VECTORS)

18088

SUTTON, WV

BRAXTON COUNTY (48I)

TAKEOFF MINIMUMS AND (OBSTACLE)
DEPARTURE PROCEDURES

AMDT 1 16203 (FAA)

TAKEOFF MINIMUMS: **Rwy 2**, 300-1. **Rwy 20**, 500-2½
w/min. climb of 290' per NM to 2400 or 1200-3 for
climb in visual conditions.DEPARTURE PROCEDURE: **Rwy 2**, climb via heading
016° to 2200 before turning left.VCOA: Obtain ATC approval for climb in visual
conditions when requesting IFR clearance. Climb in
visual conditions to cross Sutton County airport at or
above 2300 before proceeding on course.TAKEOFF OBSTACLE NOTES: **Rwy 2**, terrain, fences,
and vehicles on road beginning 61' from DER, 90' right
of centerline, up to 15' AGL/1311' MSL. Terrain,
fences, and vehicles on road beginning 77' from DER,
48' left of centerline, up to 15' AGL/1307' MSL. Pole
and trees beginning 56' from DER, 298' right of
centerline, up to 90' AGL/1409' MSL. Trees beginning
22' from DER, 244' left of centerline, up to 78'
AGL/1417' MSL. Terrain and trees beginning 556' from
DER, 223' left of centerline, up to 80' AGL/1399' MSL.
Trees beginning 1015' from DER, 260' right of
centerline, up to 106' AGL/1435' MSL. Trees beginning
889' from DER, 233' left of centerline, up to 116'
AGL/1445' MSL. trees 4508' from DER, 1011' left of
centerline, up to 65' AGL/1484' MSL. **Rwy 20**, fences,
vehicles on road, poles, and trees beginning 197' from
DER, 40' left of centerline, up to 49' AGL/1337' MSL.
Trees beginning 468' from DER, 1' right of centerline,
up to 45' AGL/1324' MSL. Terrain and trees beginning
72' from DER, 264' left of centerline, up to 76'
AGL/1435' MSL. Trees beginning 26' from DER, 311'
right of centerline, up to 97' AGL/1376' MSL. Trees
beginning 1123' from DER, 54' right of centerline, up to
96' AGL/1515' MSL. Trees beginning 4425' from DER,
47' left of centerline, up to 93 AGL/1529 MSL. Trees
beginning 1.5 NM from DER, left and right of
centerline, up to 111' AGL/1590' MSL. Trees 2.4 NM
from DER, 3786' left of centerline, up to 100'
AGL/1739' MSL.

TITUSVILLE, PA

TITUSVILLE (6G1)

TAKEOFF MINIMUMS AND (OBSTACLE)
DEPARTURE PROCEDURESTAKEOFF OBSTACLE NOTES: **Rwy 18**, trees
beginning 1865' from DER, 199' right of centerline, up
to 100' AGL/1589' MSL. Trees beginning 1313' from
DER, on centerline, up to 100' AGL/1609' MSL. Trees
beginning 872' from DER, 194' left of centerline, up to
100' AGL/1619' MSL. **Rwy 36**, trees beginning 2798'
from DER, 217' right of centerline, up to 100'
AGL/1689' MSL. Trees beginning 2806' from DER, 47'
left of centerline, up to 100' AGL/1736' MSL.

TOUGHKENAMON, PA

NEW GARDEN (N57)

TAKEOFF MINIMUMS AND (OBSTACLE)
DEPARTURE PROCEDURES

AMDT 1 95033 (FAA)

TAKEOFF MINIMUMS: **Rwy 6**, 300-1.DEPARTURE PROCEDURE: **Rwys 6,24**, climb runway
heading to 900 before turning on course.

TOWANDA, PA

BRADFORD COUNTY (N27)

TAKEOFF MINIMUMS AND (OBSTACLE)
DEPARTURE PROCEDURES

AMDT 2 12208 (FAA)

TAKEOFF MINIMUMS: **Rwy 5**, 800-2 w/min. climb of 333'
per NM to 2000, or std. w/min. climb of 461' per NM to
2000, or 2000-3 for climb in visual conditions. **Rwy 23**,
std. w/min. climb of 685' per NM to 2800, or 2000-3 for
climb in visual conditions.DEPARTURE PROCEDURE: **Rwy 5**, climb heading 047°
to 2000 before proceeding on course or for climb in
visual conditions: cross Bradford County airport at or
above 2600 before proceeding on course. When
executing VCOA, notify ATC prior to departure. **Rwy 23**,
climb heading 227° to 2000 before proceeding on course
or for climb in visual conditions: cross Bradford County
airport at or above 2600 before proceeding on course.When executing VCOA, notify ATC prior to departure.
TAKEOFF OBSTACLE NOTES: **Rwy 5**, pole and trees
beginning 4' from DER, 267' right of centerline, up to
100' AGL/859' MSL. Grain bin/silo and trees beginning
131' from DER, 475' left of centerline, up to 100'
AGL/823' MSL. **Rwy 23**, trees beginning 1069' from
DER, 1' left of centerline, up to 100' AGL/1159' MSL.
Navaid 14' from DER, 113' right of centerline, 12'
AGL/731' MSL. Trees beginning 3206' from DER, 44'
right of centerline, up to 100' AGL/1287' MSL.

TOWER CITY, PA

BENDIGO (74N)

TAKEOFF MINIMUMS AND (OBSTACLE)
DEPARTURE PROCEDURES

ORIG 09183 (FAA)

TAKEOFF MINIMUMS: **Rwy 5**, std. w/ min. climb of 518'
per NM to 2200 or 1700-2 for climb in visual conditions.
Rwy 23, NA-terrain.DEPARTURE PROCEDURE: **Rwy 5**, departure NA at
night. Climb heading 054° to 2200 before proceeding on
course or for climb in visual conditions: cross Bendigo
airport at or above 2300 before proceeding on course.
Do not exceed 180 KIAS until crossing Bendigo airport
on course.TAKEOFF OBSTACLE NOTES: **Rwy 5**, multiple trees
beginning 330' from DER, 45' left of centerline, up to 100'
AGL/919' MSL. Multiple trees beginning 355' from DER,
81' right of centerline, up to 100' AGL/879' MSL. Multiple
towers beginning 2.1 NM from DER, 2384' left of
centerline, up to 200' AGL/1559' MSL.

24 MAY 2018 to 21 JUN 2018

24 MAY 2018 to 21 JUN 2018

TAKEOFF MINIMUMS, (OBSTACLE) DEPARTURE PROCEDURES, AND DIVERSE VECTOR AREA (RADAR VECTORS)

18088

NE-4

**TAKEOFF MINIMUMS, (OBSTACLE) DEPARTURE PROCEDURES, AND
DIVERSE VECTOR AREA (RADAR VECTORS)**

18088

WASHINGTON, PA

WASHINGTON COUNTY (AFJ)
TAKEOFF MINIMUMS AND (OBSTACLE)
DEPARTURE PROCEDURES
AMDT 4 13010 (FAA)

TAKEOFF MINIMUMS: **Rwy 9**, 600-2½ or std. w/min. climb of 397' per NM to 1900. **Rwy 27**, 300-1¾ or std. w/min. climb of 932' per NM to 1500.

TAKEOFF OBSTACLE NOTES: **Rwy 9**, trees beginning 2940' from DER, 79' right of centerline, up to 100' AGL/1558' MSL. Towers beginning 1.8 NM from DER, 2962' right of centerline, up to 221' AGL/1721' MSL. Top of REIL 10' from DER, 89' right of centerline, 1' AGL/1168' MSL. Trees beginning 5205' from DER, 78' left of centerline, up to 100' AGL/1428' MSL. **Rwy 27**, trees beginning 114' from DER, 4' right of centerline, up to 100' AGL/1416' MSL. Poles beginning 3068' from DER, 141' right of centerline, up to 100' AGL/1420' MSL. TL tower 7681' from DER, 1652' right of centerline, 92' AGL/1422' MSL. Ground beginning 451' from DER, 11' right of centerline, 1326' MSL. Ground beginning 1159' from DER, 19' left of centerline, 1340' MSL. Vehicle on road 1.3 NM from DER, crossing centerline, up to 15' AGL/1317' MSL. Vehicle on road beginning 1' from DER, 170' right of centerline, up to 15' AGL/1199' MSL. Buildings beginning 3163' from DER, 41' right of centerline, up to 40' AGL/1320' MSL. Light support structures beginning 3112' from DER, 129' right of centerline, up to 7' AGL/1307' MSL. Fences beginning 3243' from DER, 229' right of centerline, 7' AGL/1310' MSL. Trees beginning 8' from DER, 2' left of centerline, up to 100' AGL/1420' MSL. Poles beginning 3274' from DER, 363' left of centerline, up to 34' AGL/1414' MSL. Vehicle on road 1.3 NM from DER, crossing centerline, up to 15' AGL/1317' MSL. Buildings beginning 3092' from DER, 255' left of centerline, up to 23' AGL/1380' MSL. Light support structures 3474' from DER, 736' left of centerline, 17' AGL/1317' MSL. Fence beginning 3226' from DER, 220' left of centerline up to 25' AGL/1296' MSL.

WAYNESBURG, PA

GREENE COUNTY (WAY)
TAKEOFF MINIMUMS AND (OBSTACLE)
DEPARTURE PROCEDURES
ORIG 08269 (FAA)

TAKEOFF MINIMUMS: **Rwy 9**, NA-obstacle. **Rwy 27**, 300-1 or Std. w/ min. climb of 447' per NM to 1300.
DEPARTURE PROCEDURE: **Rwy 27**, climb heading 268° to 1800 before proceeding on course.
TAKEOFF OBSTACLE NOTES: **Rwy 27**, trees beginning 332' from DER, 315' left of centerline, up to 100' AGL/1119' MSL. Trees beginning 332' from DER, 360' right of centerline, up to 100' AGL/1239' MSL. Pole/sign 1672' from DER, 623' left of centerline, 80' AGL/1148' MSL.

WELLSBORO, PA

WELLSBORO JOHNSTON (N38)
TAKEOFF MINIMUMS AND (OBSTACLE)
DEPARTURE PROCEDURES
AMDT 3A 16147 (FAA)

TAKEOFF MINIMUMS: **Rwy 28**, std. w/min. climb of 265' per NM to 2500.

DEPARTURE PROCEDURE: **Rwy 10**, climbing right turn direct SFK VOR/DME, thence

Rwy 28, climb heading 279° to 2600, then climbing left turn direct SFK VOR/DME, thence ...

...Climb in SFK VOR/DME holding pattern (SW, right turns, 036° inbound) to cross SFK VOR/DME at or above 4000 before proceeding on course.

TAKEOFF OBSTACLE NOTES: **Rwy 10**, building 32' from DER, 485' right of centerline, 22' AGL/1903' MSL. Pole 33' from DER, 353' right of centerline, 22' AGL/1904' MSL. Pole 149' from DER, 352' right of centerline, 25' AGL/1906' MSL. Building and vehicles on road beginning 178' from DER, 174' right of centerline, up to 32' AGL/1917' MSL. Buildings and vehicles on road beginning 307' from DER, 47' right of centerline, up to 16' AGL/1922' MSL. Vehicles on road 420' from DER, 590' right of centerline, 1927' MSL. Tree, vehicles on road, beginning 448' from DER, 185' right of centerline, up to 1972' MSL. Trees, poles, vehicles on road and terrain beginning 535' from DER, 191' right of centerline, up to 1979' MSL. Trees beginning 2959' from DER, 237' right of centerline, up to 1982' MSL. Tree 3708' from DER, 470' right of centerline, 1987' MSL. Tree 237' from DER, 381' left of centerline, 1902' MSL. Tree 329' from DER, 425' left of centerline, 1914' MSL. Trees beginning 440' from DER, 329' left of centerline, up to 1927' MSL. Trees beginning 832' from DER, 294' left of centerline, up to 1929' MSL. Trees beginning 1037' from DER, 362' left of centerline, up to 1930' MSL. Tree 1417' from DER, 555' left of centerline, 1931' MSL. Tree 1424' from DER, 420' left of centerline, 1933' MSL. **Rwy 28**, tree and terrain beginning 56' from DER, 342' left of centerline, up to 1962' MSL. Multiple trees beginning 289' from DER, 286' left of centerline, up to 1967' MSL. Tree 2.2 NM from DER, 1934' right of centerline, 100' AGL/2339' MSL.

WEST CHESTER, PA

BRANDYWINE (OQN)
TAKEOFF MINIMUMS AND (OBSTACLE)
DEPARTURE PROCEDURES
AMDT 1 15232 (FAA)

TAKEOFF OBSTACLE NOTES: **Rwy 9**, vehicles on road 29' from DER, 282' left of centerline, 15' AGL/475' MSL. Trees beginning 156' from DER, left and right of centerline, up to 100' AGL/560' MSL. Trees beginning 1456' from DER, 569' left of centerline, up to 100' AGL/540' MSL. Trees beginning 2816' from DER, left and right of centerline, up to 100' AGL/560' MSL. **Rwy 27**, vehicles on road beginning 131' from DER, left and right of centerline, up to 17' AGL/487' MSL. Trees beginning 538' from DER, left and right of centerline, up to 100' AGL/580' MSL.

**TAKEOFF MINIMUMS, (OBSTACLE) DEPARTURE PROCEDURES, AND
DIVERSE VECTOR AREA (RADAR VECTORS)**

18088

NE-4

24 MAY 2018 to 21 JUN 2018

24 MAY 2018 to 21 JUN 2018

**TAKEOFF MINIMUMS, (OBSTACLE) DEPARTURE PROCEDURES, AND
DIVERSE VECTOR AREA (RADAR VECTORS)**

18088

WHEELING, WV

WHEELING OHIO COUNTY (HLG)
TAKEOFF MINIMUMS AND (OBSTACLE)
DEPARTURE PROCEDURES
AMDT 3A 16091 (FAA)

TAKEOFF OBSTACLE NOTES: **Rwy 3**, tree 95' from DER, 315' right of centerline, 13' AGL/1213' MSL. Tree 351' from DER, 264' left of centerline, 48' AGL/1227' MSL. Obstruction light on antenna 96' from DER, 240' left of centerline, 9' AGL/1208' MSL. Obstruction light on transmission tower 5596' from DER, 1128' right of centerline, 100' AGL/1341' MSL. **Rwy 16**, pole 125' from DER, 241' left of centerline, 4' AGL/1203' MSL. Pole 264' from DER, 261' right of centerline, 6' AGL/1205' MSL. Post 267' from DER, 242' left of centerline, 19' AGL/1198' MSL. Tree 299' from DER, 273' left of centerline, 46' AGL/1225' MSL. **Rwy 21**, tree 9' from DER, 459' right of centerline, 39' AGL/1176' MSL. Tree 69' from DER, 455' right of centerline, 39' AGL/1179' MSL. Tree 69' from DER, 406' right of centerline, 40' AGL/1190' MSL. Multiple trees beginning 77' from DER, 367' right of centerline, up to 37' AGL/1194' MSL. **Rwy 34**, multiple trees beginning 460' from DER, 402' right of centerline, up to 46' AGL/1225' MSL. Obstruction light on antenna 436' from DER, 599' left of centerline, 45' AGL/1224' MSL.

**WILKES-BARRE/SCRANTON, PA
WILKES-BARRE/SCRANTON INTL (AVP)**

TAKEOFF MINIMUMS AND (OBSTACLE)
DEPARTURE PROCEDURES
AMDT 3 13290 (FAA)

TAKEOFF MINIMUMS: **Rwy 10**, NA-obstacles. **Rwy 4**, 300-11/4 w/min. climb of 210' per NM to 2800 or std. w/min. climb of 220' per NM to 1800 or 2000-3 for climb in visual conditions. **Rwy 22**, 500-3 w/min. climb of 240' per NM to 1800 or std. w/min. climb of 290' per NM to 1800 or 2000-3 for climb in visual conditions.

DEPARTURE PROCEDURE: **Rwy 4**, climb heading 044° to 2800 before proceeding on course. For climb in visual conditions: cross Wilkes-Barre/Scranton Intl airport at or above 2800 MSL before proceeding on course. When executing VCOA, notify ATC prior to departure. **Rwy 22**, climb heading 224° to 1400, then climbing right turn on heading 250° and LVZ VORTAC R-287 to 3000 before proceeding on course. For climb in visual conditions: cross Wilkes-Barre/Scranton Intl airport at or above 2800 MSL before proceeding on course. When executing VCOA, notify ATC prior to departure. **Rwy 28**, climbing left turn on heading 250° and LVZ VORTAC R-287 to 3000 before proceeding on course.

TAKEOFF OBSTACLE NOTES: **Rwy 4**, trees 5847' from DER, 1632' left of centerline, up to 91' AGL/1070' MSL. **Rwy 22**, trees 1.4 NM from DER, 2576' left of centerline, up to 100' AGL/1279' MSL. Trees 2.4 NM from DER, 3790' left of centerline, up to 100' AGL/1419' MSL.

WILKES-BARRE/SCRANTON, PA (CON'T)

WILKES-BARRE WYOMING VALLEY (WBW)
TAKEOFF MINIMUMS AND (OBSTACLE)
DEPARTURE PROCEDURES
ORIG 12208 (FAA)

TAKEOFF MINIMUMS: **Rwy 7**, std. w/min. climb of 280' per NM to 3300, or 2400-3 for climb in visual conditions. **Rwy 9**, std. w/min. climb of 307' per NM to 2600, or 2400-3 for climb in visual conditions. **Rwy 25**, std. w/min. climb of 320' per NM to 3100, or 2400-3 for climb in visual conditions. **Rwy 27**, 1000-3 w/min. climb of 415' per NM to 2200, or 2400-3 for climb in visual conditions. DEPARTURE PROCEDURE: **Rwy 7**, climb heading 066° to 3300 before proceeding on course or for climb in visual conditions cross Wilkes-Barre Wyoming Valley airport at or above 2800 before proceeding on course. **Rwy 9**, climb heading 089° to 2800 before proceeding on course or for climb in visual conditions cross Wilkes-Barre Wyoming Valley airport at or above 2800 before proceeding on course. **Rwy 25**, climb heading 246° to 3100 before proceeding on course or for climb in visual conditions cross Wilkes-Barre Wyoming Valley airport at or above 2800 before proceeding on course. **Rwy 27**, climb heading 269° to 2700 before proceeding on course or for climb in visual conditions cross Wilkes-Barre Wyoming Valley airport at or above 2800 before proceeding on course.

TAKEOFF OBSTACLE NOTES: **Rwy 7**, road beginning 182' from DER, 428' right of centerline, up to 15' AGL/579' MSL. Trees and poles beginning 409' from DER, 32' left of centerline, up to 99' AGL/659' MSL. Trees and poles beginning 639' from DER, 309' right of centerline, up to 100' AGL/699' MSL. Dike 751' from DER, right and left of centerline, 0' AGL/564' MSL. Building 3071' from DER, 873' left of centerline, up to 80' AGL/640' MSL. Mobile crane 4526' from DER, up to 120' AGL/660' MSL. High tension power pole 6003' from DER, 1843' right of centerline, up to 173' AGL/719' MSL. **Rwy 9**, trees beginning 39' from DER, 47' right of centerline, up to 111' AGL/651' MSL. Trees beginning 104' from DER, 344' left of centerline, up to 100' AGL/640' MSL. Buildings beginning 1.44 NM from DER, 2517' right of centerline, up to 58' AGL/918' MSL. **Rwy 25**, road beginning 17' from DER, 435' left of centerline, up to 15' AGL/577' MSL. Trees beginning 553' from DER, 103' left of centerline, up to 134' AGL/634' MSL. Trees beginning 1668' from DER, 36' right of centerline, up to 107' AGL/647' MSL. Tower 1.23 NM from DER, 1297' right of centerline, 203' AGL/753' MSL. **Rwy 27**, trees 539' from DER, 380' left of centerline, up to 117' AGL/557' MSL. Trees beginning 1285' from DER, left and right of centerline, up to 107' AGL/647' MSL. Poles and trees beginning 1.18 NM from DER, 957' right of centerline, up to 52' AGL/1352' MSL.

24 MAY 2018 to 21 JUN 2018

24 MAY 2018 to 21 JUN 2018

**TAKEOFF MINIMUMS, (OBSTACLE) DEPARTURE PROCEDURES, AND
DIVERSE VECTOR AREA (RADAR VECTORS)**

18088

NE-4

TAKEOFF MINIMUMS, (OBSTACLE) DEPARTURE PROCEDURES, AND DIVERSE VECTOR AREA (RADAR VECTORS)

18088

WILLIAMSON, WV

APPALACHIAN RGNL (EBD)

TAKEOFF MINIMUMS AND (OBSTACLE)

DEPARTURE PROCEDURES

ORIG-A 12208 (FAA)

TAKEOFF MINIMUMS: **Rwy 8**, 500-2¼.**Rwy 26**, 300-2. NA at night.DEPARTURE PROCEDURE: **Rwy 8**, climb heading 077° to 2700 before proceeding on course. **Rwy 26**, climb heading 257° to 2400 before proceeding on course.TAKEOFF OBSTACLE NOTES: **Rwy 8**, trees and high terrain beginning at DER, 77' right of centerline, up to 100' AGL/1998' MSL. Trees beginning 347' from DER, 185' left of centerline, up to 100' AGL/1998' MSL. **Rwy 26**, trees beginning 11' from DER, 35' left of centerline, up to 100' AGL/1927' MSL. Trees beginning 864' from DER, 79' right of centerline, up to 100' AGL/1998' MSL.

WILLIAMSPORT, PA (CON'T)

WILLIAMSPORT RGNL (CON'T)

Rwy 9 (CON'T), Trees beginning 4991' from DER, 430' left of centerline, up to 654' MSL. Tree 5003' from DER, 500' left of centerline, 658' MSL. Tree 5078' from DER, 1058' right of centerline, 95' AGL/669' MSL. Tree 5236' from DER, 1115' right of centerline, 89' AGL/677' MSL. Trees beginning 5280' from DER, 1067' right of centerline, up to 104' AGL/686' MSL. Trees beginning 5438' from DER, 1157' right of centerline, up to 102' AGL/694' MSL. Tree 5966' from DER, 1722' right of centerline, 740' MSL. Tree, tower beginning 6072' from DER, 1608' right of centerline, up to 744' MSL. Trees beginning 6072' from DER, 1553' right of centerline, up to 104' AGL/744' MSL. Tree 6072' from DER, 1620' right of centerline, 98' AGL/742' MSL. Tree 1 NM from DER, 1228' left of centerline, 83' AGL/711' MSL. Tree 1.1 NM from DER, 1323' left of centerline, 101' AGL/745' MSL. Trees beginning 1.1 NM from DER, 1164' left of centerline, up to 755' MSL. Tree 1.1 NM from DER, 1476' left of centerline, 757' MSL. Tree, tower beginning 1.1 NM from DER, 1036' left of centerline, up to 759' MSL. Tree 1.2 NM from DER, 1416' left of centerline, 84' AGL/760' MSL. Tree 1.3 NM from DER, 1357' left of centerline, 95' AGL/761' MSL. Trees beginning 1.3 NM from DER, 1208' right of centerline, up to 90' AGL/771' MSL. Tree 1.3 NM from DER, 1399' right of centerline, 99' AGL/767' MSL. Tree 1.3 NM from DER, 1470' right of centerline, 93' AGL/775' MSL. Tree 1.3 NM from DER, 1538' left of centerline, 105' AGL/767' MSL. Tree 1.3 NM from DER, 1387' left of centerline, 92' AGL/773' MSL. Tree, tower beginning 1.4 NM from DER, 1251' right of centerline, up to 781' MSL. Tree 1.4 NM from DER, 1377' left of centerline, 88' AGL/777' MSL. Tree 1.4 NM from DER, 1247' left of centerline, 91' AGL/784' MSL. Tree 1.4 NM from DER, 1225' left of centerline, 90' AGL/788' MSL. Tree 1.4 NM from DER, 1220' left of centerline, 788' MSL. **Rwy 12**, tree 12' from DER, 369' right of centerline, 536' MSL. ALS 284' from DER, 499' left of centerline, 17' AGL/539' MSL. Gen util 285' from DER, 498' left of centerline, 23' AGL/540' MSL. Trees beginning 324' from DER, 3' right of centerline, up to 553' MSL. Trees beginning 413' from DER, 19' right of centerline, up to 39' AGL/561' MSL. Gen util 478' from DER, 608' left of centerline, 40' AGL/558' MSL. Tree 1172' from DER, 65' left of centerline, 566' MSL. Tree, pole beginning 1336' from DER, 97' left of centerline, up to 568' MSL. Tree 1690' from DER, 283' left of centerline, 574' MSL. Tree 1933' from DER, 263' left of centerline, 576' MSL. Tree 2686' from DER, 191' left of centerline, 600' MSL. Tree 2739' from DER, 90' right of centerline, 596' MSL. Trees beginning 2770' from DER, 87' left of centerline, up to 611' MSL. Tree 5134' from DER, 1840' left of centerline, 87' AGL/676' MSL. Tree 5596' from DER, 1885' left of centerline, 94' AGL/689' MSL. Trees beginning 6019' from DER, 1596' left of centerline, up to 740' MSL. Tree 6072' from DER, 1736' left of centerline, 98' AGL/742' MSL. Tree, tower beginning 6072' from DER, 1673' left of centerline, up to 744' MSL. Pole beginning 1.5 NM from DER, 2216' right of centerline, up to 50' AGL/813' MSL. **Rwy 27**, ground, ALS beginning 7' from DER, 55' left of centerline, up to 515' MSL. ALS beginning 9' from DER, 55' right of centerline, up to 2' AGL/515' MSL. NAVAID 437' from DER, 0' of centerline, 17' AGL/525' MSL. Building beginning 517' from DER, 305' right of centerline, up to 16' AGL/533' MSL. Building 531' from DER, 302' right of centerline, 21' AGL/537' MSL. Tower 543' from DER, 292' right of centerline, 22' AGL/540' MSL. Tree 669' from DER, 467' left of centerline, 25' AGL/533' MSL. Trees beginning 1954' from DER, 22' left of centerline, up to 599' MSL.

WILLIAMSPORT, PA

WILLIAMSPORT RGNL (IPT)

TAKEOFF MINIMUMS AND (OBSTACLE)

DEPARTURE PROCEDURES

AMDT 6 17173 (FAA)

TAKEOFF MINIMUMS: **Rwy 9**, std. w/min. climb of 300' per NM to 1500 or 2800-3 VCOA. **Rwy 12**, std. w/min. climb of 475' per NM to 1000 or 2800-3 VCOA.**Rwy 27**, std. w/min. climb of 470' per NM to 1000 or 2800-3 VCOA. **Rwy 30**, std. w/min. climb of 375' per NM to 1500 or 2800-3 VCOA.DEPARTURE PROCEDURE: **Rwy 9**, climb heading 087° to 2600 before proceeding on course. **Rwy 12**, climbing left turn heading 090° to 2500 before proceeding on course. **Rwy 27**, climbing right turn heading 285° to 2800 before proceeding on course. **Rwy 30**, climb heading 296° to 2500 before proceeding on course.

VCOA: All runways, Obtain ATC approval for VCOA when requesting IFR clearance. Climb in visual conditions to cross Williamsport RGNL Airport at or above 2800 before proceeding on course.

TAKEOFF OBSTACLE NOTES: **Rwy 9**, fence, light pole, ALS, twy sign beginning 4' from DER, 4' left of centerline, up to 10' AGL/536' MSL. Light pole, ALS beginning 5' from DER, 5' right of centerline, up to 1' AGL/526' MSL. Railroad, fence, tree beginning 170' from DER, 331' left of centerline, up to 552' MSL. Tree, fence beginning 240' from DER, 290' right of centerline, up to 537' MSL. T-L tower, tree, bush, pole beginning 359' from DER, 265' left of centerline, up to 40' AGL/566' MSL. Gen util, ALS beginning 398' from DER, 0' of centerline, up to 23' AGL/540' MSL. Building, railroad, pole, light pole, tree, ALS, gen util beginning 616' from DER, 0' left of centerline, up to 47' AGL/576' MSL. Gen util, tree beginning 620' from DER, 0' of centerline, up to 40' AGL/558' MSL. Light pole 1175' from DER, 28' right of centerline, 30' AGL/560' MSL. Pole 1521' from DER, 309' right of centerline, 45' AGL/564' MSL. Tree 1523' from DER, 871' right of centerline, 574' MSL. Tree 2278' from DER, 66' left of centerline, 587' MSL. Tree 2290' from DER, 155' left of centerline, 590' MSL. Tree 3013' from DER, 372' left of centerline, 61' AGL/606' MSL. Trees beginning 3317' from DER, 413' left of centerline, up to 46' AGL/616' MSL. Tree 3364' from DER, 801' left of centerline, 47' AGL/619' MSL. Tree 3397' from DER, 909' left of centerline, 42' AGL/626' MSL. Trees beginning 3414' from DER, 433' left of centerline, up to 60' AGL/642' MSL. Tree 3527' from DER, 382' right of centerline, 87' AGL/617' MSL.

TAKEOFF MINIMUMS, (OBSTACLE) DEPARTURE PROCEDURES, AND DIVERSE VECTOR AREA (RADAR VECTORS)

18088

NE-4

TAKEOFF MINIMUMS, (OBSTACLE) DEPARTURE PROCEDURES, AND DIVERSE VECTOR AREA (RADAR VECTORS)

18088

WILLIAMSPORT, PA (CON'T) WILLIAMSPORT RGNL (CON'T)

Rwy 27 (CON'T), Tree 2050' from DER, 46' right of centerline, 86' AGL/599' MSL. Trees beginning 2128' from DER, 96' right of centerline, up to 602' MSL. Trees beginning 2154' from DER, 49' left of centerline, up to 601' MSL. Trees beginning 2304' from DER, 23' left of centerline, up to 604' MSL. Tree 3309' from DER, 133' left of centerline, 97' AGL/608' MSL. Trees beginning 3312' from DER, 47' left of centerline, up to 611' MSL. Tree 3455' from DER, 28' right of centerline, 616' MSL. Tree 3565' from DER, 371' left of centerline, 95' AGL/613' MSL. Trees beginning 3566' from DER, 152' left of centerline, up to 614' MSL. Tree 4522' from DER, 352' left of centerline, 627' MSL. Trees beginning 4557' from DER, 490' left of centerline, up to 647' MSL. Trees beginning 4748' from DER, 384' left of centerline, up to 86' AGL/649' MSL. Tree 4749' from DER, 494' left of centerline, 659' MSL. Trees beginning 4753' from DER, 197' left of centerline, up to 86' AGL/661' MSL. Trees beginning 4963' from DER, 478' left of centerline, up to 672' MSL. Trees beginning 5068' from DER, 417' left of centerline, up to 91' AGL/675' MSL. Trees beginning 5068' from DER, 354' left of centerline, up to 91' AGL/675' MSL. Trees beginning 5068' from DER, 164' left of centerline, up to 678' MSL. Trees beginning 5280' from DER, 96' left of centerline, up to 686' MSL. Trees beginning 5596' from DER, 378' left of centerline, up to 706' MSL. Tower, T-L tower beginning 1.6 NM from DER, 1923' left of centerline, up to 88' AGL/940' MSL. T-L tower 2.1 NM from DER, 1893' left of centerline, 94' AGL/1040' MSL. Pole 2.1 NM from DER, 3626' left of centerline, up to 103' AGL/1572' MSL. **Rwy 30**, fence 98' from DER, 348' left of centerline, 8' AGL/531' MSL. Road 210' from DER, 12' left of centerline, 539' MSL. Road, sign beginning 256' from DER, 108' right of centerline, up to 537' MSL. Pole 428' from DER, 494' right of centerline, 69' AGL/588' MSL. Tree 1643' from DER, 177' right of centerline, 600' MSL. Tree 1696' from DER, 290' right of centerline, 608' MSL. Trees beginning 1789' from DER, 177' right of centerline, up to 614' MSL. Tree 1847' from DER, 284' left of centerline, 582' MSL. Trees beginning 1946' from DER, 139' left of centerline, up to 597' MSL. Trees beginning 2030' from DER, 265' left of centerline, up to 602' MSL. Tree 2194' from DER, 182' left of centerline, 614' MSL. Tree, T-L tower, pole beginning 2217' from DER, 17' right of centerline, up to 617' MSL. Trees beginning 2462' from DER, 92' left of centerline, up to 628' MSL. Trees beginning 2822' from DER, 14' left of centerline, up to 629' MSL. Trees beginning 2981' from DER, 27' right of centerline, up to 619' MSL. Trees beginning 3172' from DER, 20' right of centerline, up to 623' MSL. Tree 3731' from DER, 450' left of centerline, 630' MSL. Tree 3746' from DER, 29' right of centerline, 628' MSL. Tree 3839' from DER, 118' left of centerline, 638' MSL. Trees beginning 3845' from DER, 18' left of centerline, up to 640' MSL. Tree, pole beginning 4277' from DER, 327' right of centerline, up to 645' MSL. Pole 4465' from DER, 225' right of centerline, 37' AGL/647' MSL. Tree, pole beginning 4488' from DER, 12' right of centerline, up to 700' MSL. Tree, pole beginning 4646' from DER, 49' right of centerline, up to 701' MSL. Tree 4699' from DER, 37' left of centerline, 695' MSL. Tree, bush beginning 4752' from DER, 138' right of centerline, up to 737' MSL. Tree, pole beginning 4804' from DER, 33' left of centerline, up to 706' MSL. Tree, pole beginning 5016' from DER, 29' left of centerline, up to 707' MSL. Tree 5016' from DER, 96' right of centerline, 754' MSL. Pole, ground, tree beginning 5016' from DER, 27' right of centerline, up to 53' AGL/755' MSL. Tree, pole beginning 5068' from DER, 132' left of centerline, up to 731' MSL. Tree, pole beginning 5227' from DER, 96' left of centerline, up to 748' MSL. Trees beginning 5385' from DER, 31' right of centerline, up to 764' MSL. Trees beginning 5438' from DER, 82' left of centerline, up to 771' MSL. Trees beginning 5544' from DER, 127' left of centerline, up to 777' MSL.

YORK, PA YORK (THV)

TAKEOFF MINIMUMS AND (OBSTACLE) DEPARTURE PROCEDURES

AMDT 1 11013 (FAA)

TAKEOFF MINIMUMS: **Rwy 17**, 300-1¼ or std. w/ min. climb of 473' per NM to 800. **Rwy 35**, 300-1 or std. w/ min. climb of 393' per NM to 800.

DEPARTURE PROCEDURE: **Rwy 17**, climb heading 166° to 1100 before turning right.

TAKEOFF OBSTACLE NOTES: **Rwy 17**, terrain, catenary ball, vehicles on road, fences, poles, buildings, and trees beginning 2' from DER, 9' left of centerline, up to 46' AGL/645' MSL. Terrain, vehicles on road, fences, poles, buildings, and trees beginning 38' from DER, 12' right of centerline, up to 41' AGL/645' MSL. Trees 2680' from DER, 467' left of centerline, up to 54' AGL/653' MSL. Trees 6013' from DER, 974' right of centerline, up to 84' AGL/713' MSL. Trees 1 NM from DER, 710' right of centerline, up to 71' AGL/670' MSL. **Rwy 35**, terrain, building, poles, and trees beginning 32' from DER, 5' left of centerline up to 104' AGL/623' MSL. Terrain, fence, building, and trees beginning 18' from DER, 8' right of centerline, up to 88' AGL/627' MSL. Trees 3325' from DER, 514' right of centerline, up to 80' AGL/639' MSL. Trees 3789' from DER, 1049' left of centerline, up to 101' AGL/660' MSL. Trees 4121' from DER, 763' left of centerline, up to 109' AGL/628' MSL.

ZELIENOPLE, PA

ZELIENOPLE MUNI (PJC) TAKEOFF MINIMUMS AND (OBSTACLE) DEPARTURE PROCEDURES

AMDT 3 08269 (FAA)

TAKEOFF MINIMUMS: **Rwys 13,35**, 1100-2½ for climb in visual conditions.

DEPARTURE PROCEDURE: **Rwys 17,35**, for climb in visual conditions: cross Zelienville Muni at or above 1900' before proceeding on course.

TAKEOFF OBSTACLE NOTES: **Rwy 17**, terrain and trees beginning 1.23 NM from DER, 1272' left of centerline, up to 100' AGL/1339' MSL. Vehicle on road beginning 18' from DER, 378' left of centerline, up to 15' AGL/946' MSL. Brush 278' from DER, 204' left of centerline, 21' AGL/921' MSL. Vehicle on road 451' from DER, 593' right of centerline, 15' AGL/946' MSL. Trees beginning 2442' from DER, 1110' right of centerline, up to 100' AGL/1299' MSL. Power lines beginning 3648' from DER, 644' right of centerline, up to 79' AGL/1046' MSL. Trees beginning 1.27 NM from DER, 477' right of centerline, up to 100' AGL/1359' MSL. **Rwy 35**, terrain and trees beginning 1.04 NM from DER, 1400' left of centerline, up to 100' AGL/1259' MSL. Trees 805' from DER, 287' right of centerline, 120' AGL/1014' MSL. Vehicle on road 161' from DER, 524' right of centerline, 15' AGL/946' MSL.

24 MAY 2018 to 21 JUN 2018

24 MAY 2018 to 21 JUN 2018

TAKEOFF MINIMUMS, (OBSTACLE) DEPARTURE PROCEDURES, AND DIVERSE VECTOR AREA (RADAR VECTORS)

18088

NE-4