

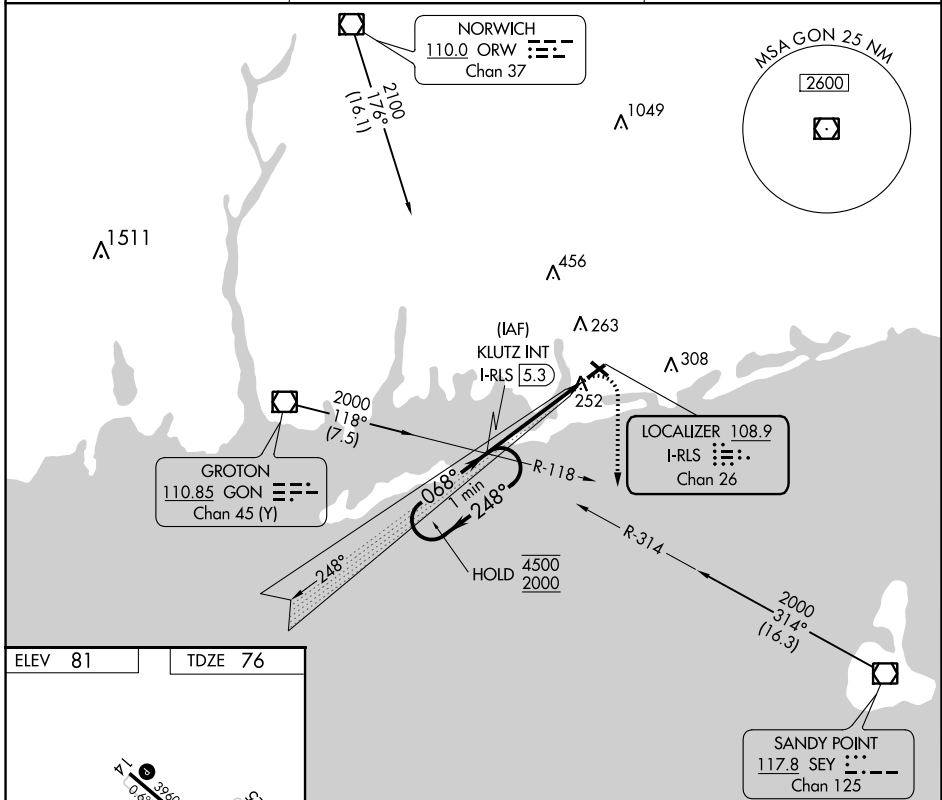
LOC/DME I-RLS <b>108.9</b> Chan 26	APP CRS <b>068°</b>	Rwy Idg TDZE Apt Elev	<b>4010</b> <b>76</b> <b>81</b>
--	------------------------	-----------------------------	---------------------------------------

# LOC RWY 7

WESTERLY STATE (WST)

<p><b>NA</b></p> <p>⚠ Circling to Rwy 14 and 32 NA at night. Rwy 7 helicopter visibility reduction below ¼ SM NA. Inop table does not apply.</p>	<p><b>MALSF</b></p>	<p><b>MISSED APPROACH:</b> Climbing right turn to 2000 on heading 180° and SEY R-314 to KLUTZ INT/I-RLS 5.3 DME and hold, continue climb-in-hold to 2000.</p>
--	---------------------	---

ASOS <b>132.375</b>	PROVIDENCE APP CON * <b>119.45 319.2</b>	UNICOM <b>123.0 (CTAF) 0</b>
------------------------	---	---------------------------------



ELEV 81	TDZE 76
---------	---------

REIL Rws 14, 25 and 32  
MIRL Rws 7-25 and 14-32

FAF to MAP 4.6 NM

Knots	60	90	120	150	180
Min:Sec	4:36	3:04	2:18	1:50	1:32

One Minute Holding Pattern	KLUTZ INT I-RLS 5.3	2000	SEY R-314	KLUTZ INT
----------------------------	---------------------	------	-----------	-----------

CATEGORY	A	B	C	D
S-7	520-1	444 (500-1)	520-1¾	444 (500-1¾)
<b>CIRCLING</b>	580-1	499 (500-1)	720-2 639 (700-2)	760-2¼ 679 (700-2¼)

NE-1, 19 MAY 2022 to 16 JUN 2022

NE-1, 19 MAY 2022 to 16 JUN 2022

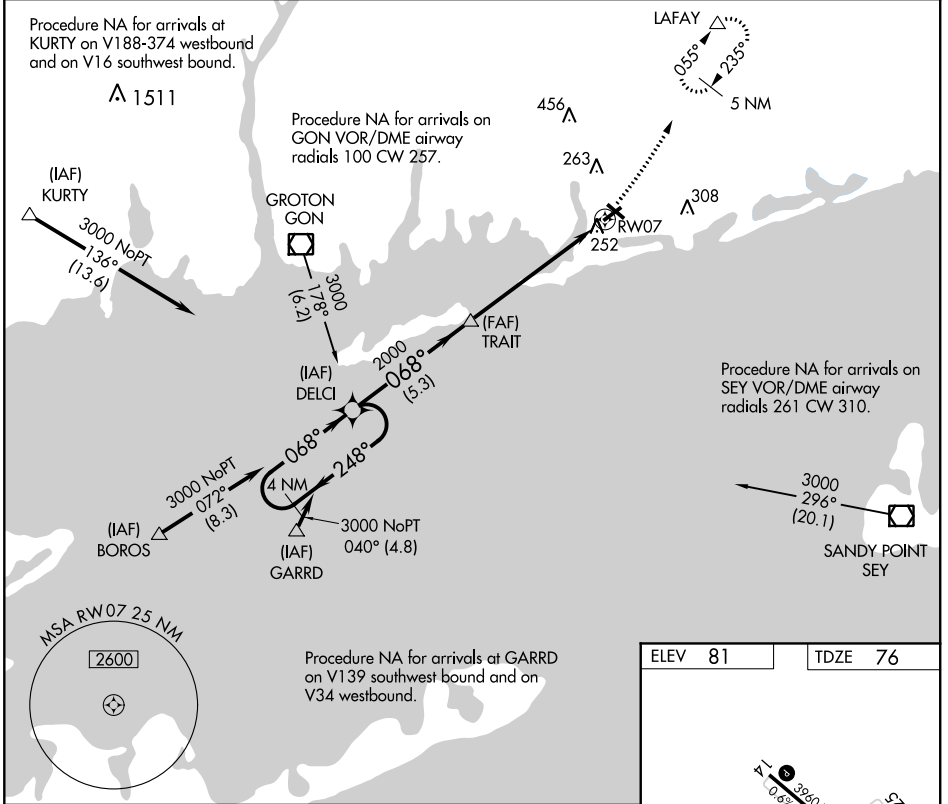
APP CRS <b>068°</b>	Rwy Idg <b>4010</b>
	TDZE <b>76</b>
	Apt Elev <b>81</b>

# RNAV (GPS) RWY 7

WESTERLY STATE (WST)

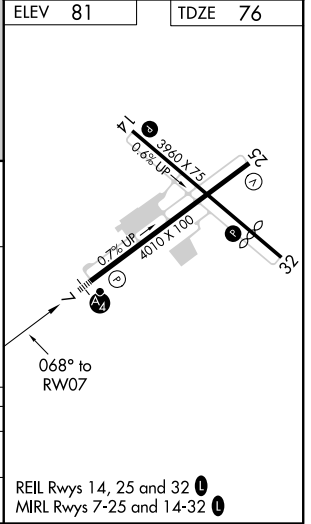
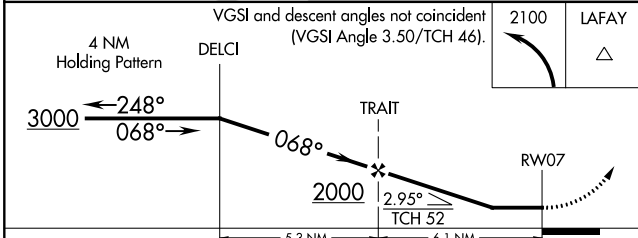
<b>▼</b> Inoperative table does not apply. DME/DME RNP-0.3 NA. <b>▲</b> NA	<b>MALSF</b> 	<b>MISSED APPROACH:</b> Climbing left turn to 2100 direct LAFAY and hold.
---	------------------	---

<b>ASOS</b> <b>132.375</b>	<b>PROVIDENCE APP CON *</b> <b>119.45 319.2</b>	<b>UNICOM</b> <b>123.0 (CTAF) 0</b>
-------------------------------	--	--



NE-1, 19 MAY 2022 to 16 JUN 2022

NE-1, 19 MAY 2022 to 16 JUN 2022



CATEGORY	A	B	C	D
LNVA MDA	520-1 444 (500-1)		520-1½ 444 (500-1½)	520-1½ 444 (500-1½)
CIRCLING	580-1 499 (500-1)		720-1¾ 639 (700-1¾)	760-2¼ 679 (700-2¼)