

WAAS CH 45824 W25A	APP CRS 246°	Rwy Idg 3375 TDZE 543 Apt Elev 544
--	------------------------	---

RNAV (GPS) RWY 25

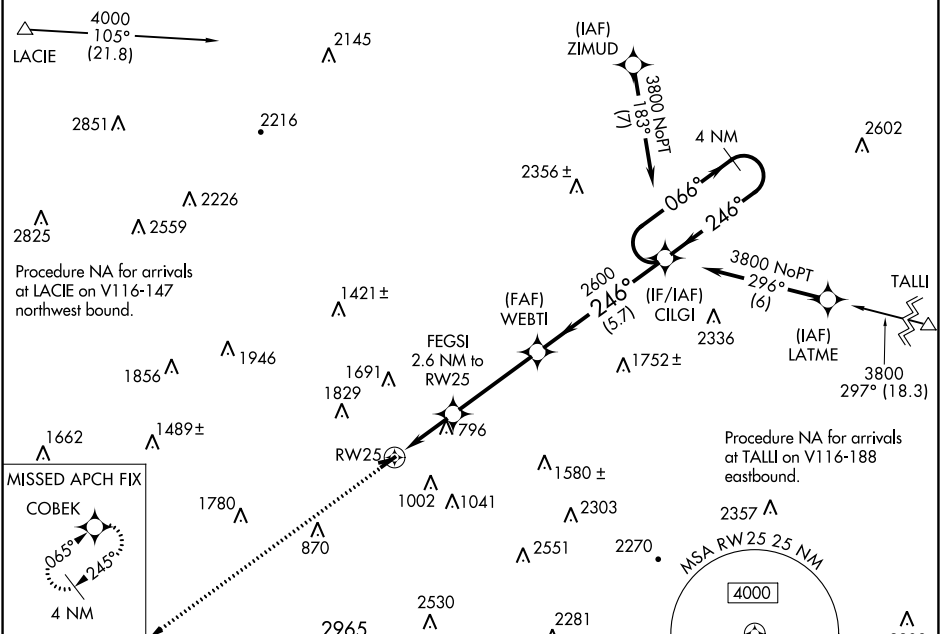
WILKES-BARRE WYOMING VALLEY (WBW)

RNP APCH.

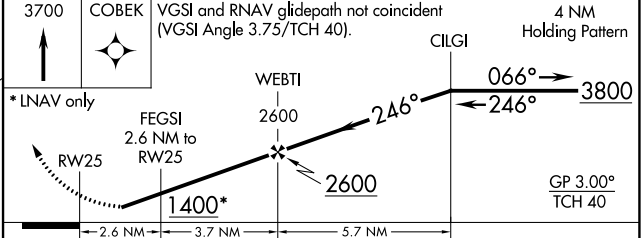
▽ Circling NA to Rwys 9 and 27. Rwy 25 helicopter visibility reduction below 1 SM NA. Baro-VNAV NA. Use Wilkes-Barre/Scranton altimeter setting. Circling Rwy 7 NA at night. Circling NA NW of Rwy 7-25. Procedure NA at night.

MISSED APPROACH:
Climb to 3700 direct COBEK and hold.

AVP ASOS 111.6	WILKES-BARRE APP CON 126.3 256.7	UNICOM 122.8 (CTAF) 0
--------------------------	--	---------------------------------



ELEV 544	TDZE 543
-----------------	-----------------



CATEGORY	A	B	C	D
LPV DA		NA		
LNAV/VNAV DA		NA		
LNAV MDA	1240-1	697 (700-1)	NA	
CIRCLING	1320-1 776 (800-1)	1380-1¼ 836 (900-1¼)	NA	

NE-4, 08 SEP 2022 to 06 OCT 2022

NE-4, 08 SEP 2022 to 06 OCT 2022

WAAS CH 86624 W07A	APP CRS 066°	Rwy Idg TDZE Apt Elev	3375 543 544
--	------------------------	-----------------------------	---

RNAV (GPS) RWY 7

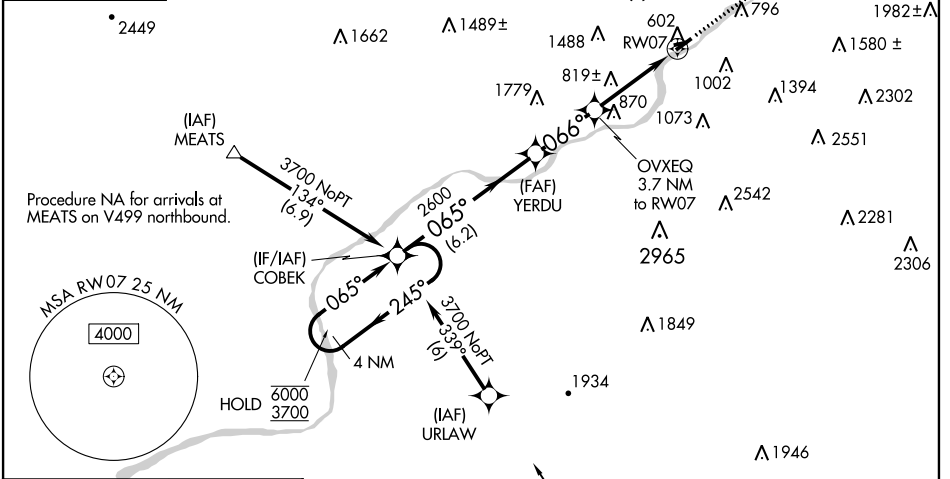
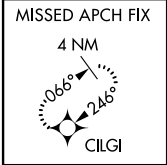
WILKES-BARRE WYOMING VALLEY (WBW)

RNP APCH.

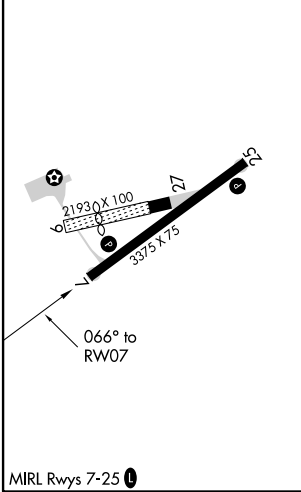
NA Rwy 7 helicopter visibility reduction below 1 SM NA. Use Wilkes-Barre/Scranton altimeter setting. Circling NA NW of Rwy 7-25. Procedure NA at night.

MISSED APPROACH:
Climb to 3800 direct
CILGI and hold.

AVP ASOS 111.6	WILKES-BARRE APP CON 126.3 256.7	UNICOM 122.8 (CTAF) 0
--------------------------	--	---------------------------------



ELEV 544	TDZE 543
----------	----------



4 NM Holding Pattern

COBEK VGS1 and descent angles not coincident (VGS1 Angle 4.00/TCH 40).

3800 CILGI

6000 ← 245°

3700 → 065°

2600

066°

1760

3.00° TCH 40

OVXEQ 3.7 NM to RW07

6.2 NM

2.6 NM

3.7 NM

CATEGORY	A	B	C	D
LP MDA	1160-1	617 (700-1)		NA
LNAV MDA	1300-1 757 (800-1)	1300-1¼ 757 (800-1¼)		NA
CIRCLING	1320-1 776 (800-1)	1380-1¼ 836 (900-1¼)		NA

NE-4, 08 SEP 2022 to 06 OCT 2022

NE-4, 08 SEP 2022 to 06 OCT 2022