

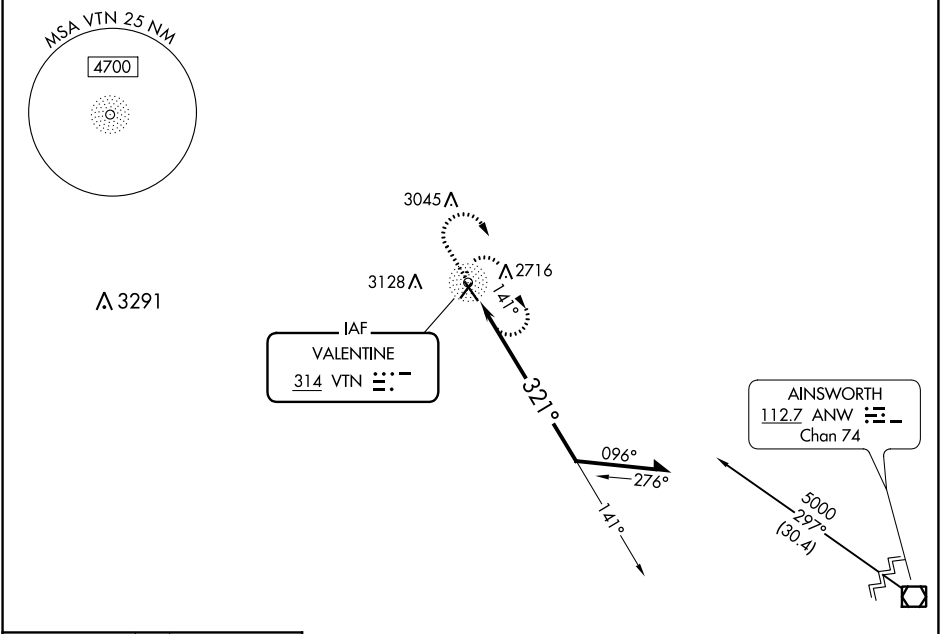
NDB VTN <b>314</b>	APP CRS <b>321°</b>	Rwy Idg TDZE Apt Elev	<b>4704</b> <b>2589</b> <b>2595</b>
-----------------------	------------------------	-----------------------------	-------------------------------------------

# NDB RWY 32

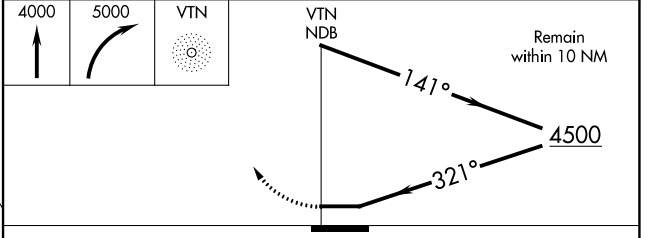
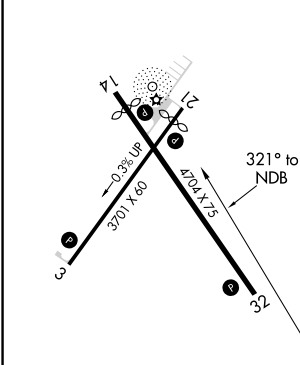
MILLER FLD (VTN)

**MISSED APPROACH:** Climb to 4000 then climbing right turn to 5000 direct VTN NDB and hold.

ASOS <b>118.075</b>	DENVER CENTER <b>127.95 338.2</b>	UNICOM <b>122.8 (CTAF)</b>
------------------------	--------------------------------------	-------------------------------



ELEV 2595	TDZE 2589
-----------	-----------



CATEGORY	A	B	C	D
S-32	3400-1 811 (900-1)	3400-1¼ 811 (900-1¼)		NA
<b>C</b> CIRCLING	3400-1 805 (900-1)	3560-1½ 965 (1000-1½)		NA

NC-2, 02 DEC 2021 to 30 DEC 2021

NC-2, 02 DEC 2021 to 30 DEC 2021

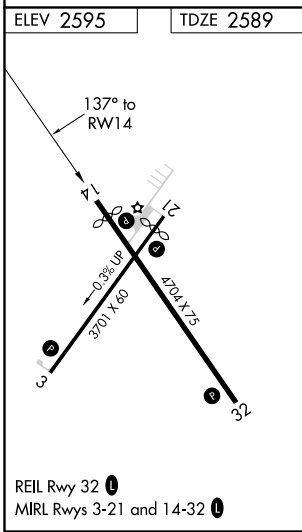
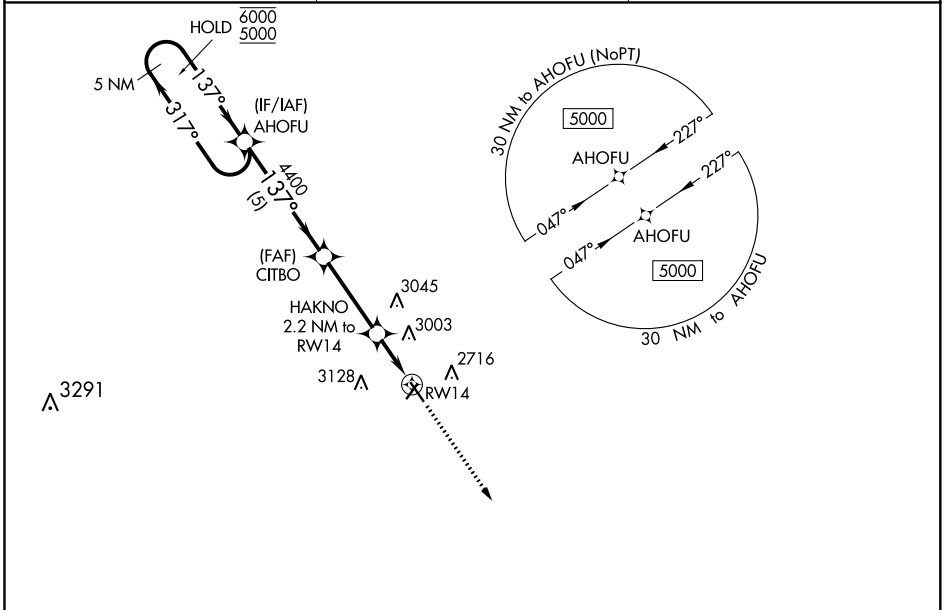
WAAS CH <b>61037</b> <b>W14A</b>	APP CRS <b>137°</b>	Rwy Idg TDZE Apt Elev	<b>4320</b> <b>2589</b> <b>2595</b>
----------------------------------------	------------------------	-----------------------------	-------------------------------------------

# RNAV (GPS) RWY 14

MILLER FLD (VTN)

RNP APCH.	MISSED APPROACH: Climb to 5000 direct GIYIT and hold.
<p>▼ ▲ For uncompensated Baro-VNAV systems, LNAV/VNAV NA below -25°C or above 54°C . Rwy 14 helicopter visibility reduction below ¾ SM NA.</p>	

ASOS <b>118.075</b>	DENVER CENTER <b>127.95 338.2</b>	UNICOM <b>122.8 (CTAF) 0</b>
------------------------	--------------------------------------	---------------------------------



ELEV 2595	TDZE 2589				
<p>5 NM Holding Pattern</p> <p>6000 ← 317°</p> <p>5000 → 317°</p> <p>GP 3.00°</p> <p>TCH 40</p>		AHOFU	CITBO	HAKNO	GIYIT
		4400	4400	2.2 NM to RWY 14	5000
		← 5 NM	← 3.4 NM	← 0.5	← 1.7 NM
		*3320		*1.7 NM to RWY 14	*LNAV only
CATEGORY	A	B	C	D	
LPV DA	2861-1	272 (300-1)		NA	
LNAV/VNAV DA	3239-2¼	650 (700-2¼)		NA	
LNAV MDA	3160-1	571 (600-1)		NA	
<input checked="" type="checkbox"/> CIRCLING	3160-1 565 (600-1)	3560-1½ 965 (1000-1½)		NA	

NC-2, 02 DEC 2021 to 30 DEC 2021

NC-2, 02 DEC 2021 to 30 DEC 2021

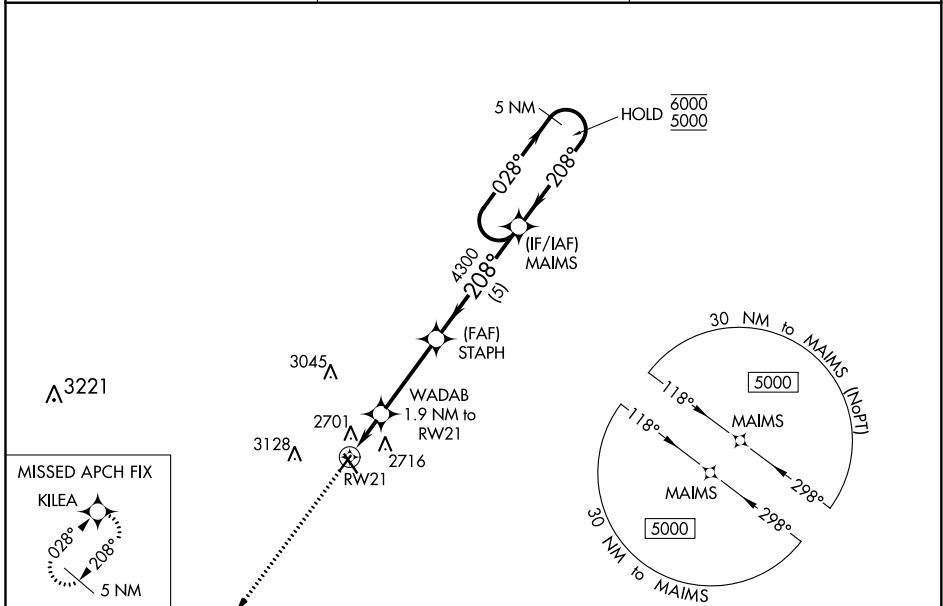
WAAS CH <b>97437</b> <b>W21A</b>	APP CRS <b>208°</b>	Rwy Idg TDZE Apt Elev	<b>3402</b> <b>2595</b> <b>2595</b>
----------------------------------------	------------------------	-----------------------------	-------------------------------------------

# RNAV (GPS) RWY 21

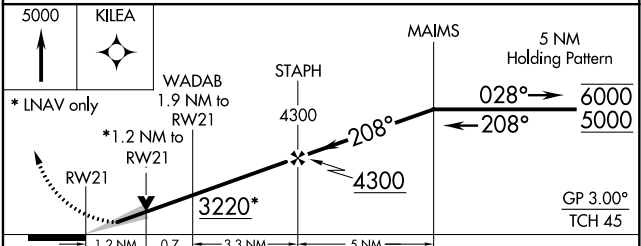
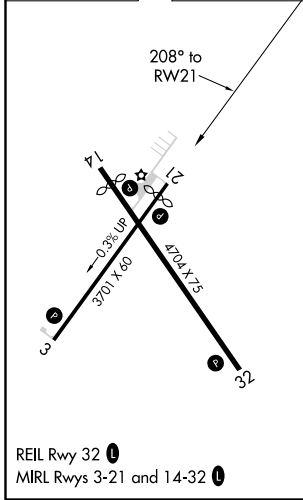
MILLER FLD (VTN)

RNP APCH.		MISSED APPROACH: Climb to 5000 direct KILEA and hold.
For uncompensated Baro-VNAV systems, LNAV/VNAV NA below -24°C or above 54°C.		

ASOS <b>118.075</b>	DENVER CENTER <b>127.95 338.2</b>	UNICOM <b>122.8 (CTAF) 0</b>
------------------------	--------------------------------------	---------------------------------



ELEV 2595	TDZE 2595
-----------	-----------



CATEGORY	A	B	C	D
LPV DA	2845-1	250 (300-1)		NA
LNAV/VNAV DA	2893-1	298 (300-1)		NA
LNAV MDA	3020-1	425 (500-1)		NA
CIRCLING	3080-1 485 (500-1)	3560-1½ 965 (1000-1½)		NA

NC-2, 02 DEC 2021 to 30 DEC 2021

NC-2, 02 DEC 2021 to 30 DEC 2021

WAAS CH <b>90237</b> <b>W03A</b>	APP CRS <b>028°</b>	Rwy ldg <b>3701</b> TDZE <b>2595</b> Apt Elev <b>2595</b>
----------------------------------------	------------------------	-----------------------------------------------------------------

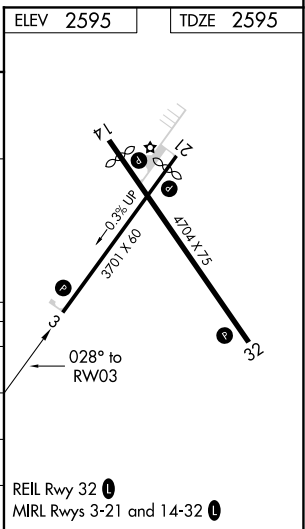
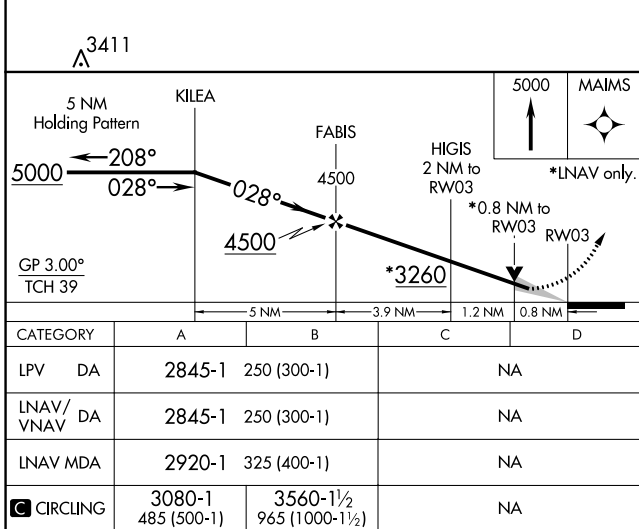
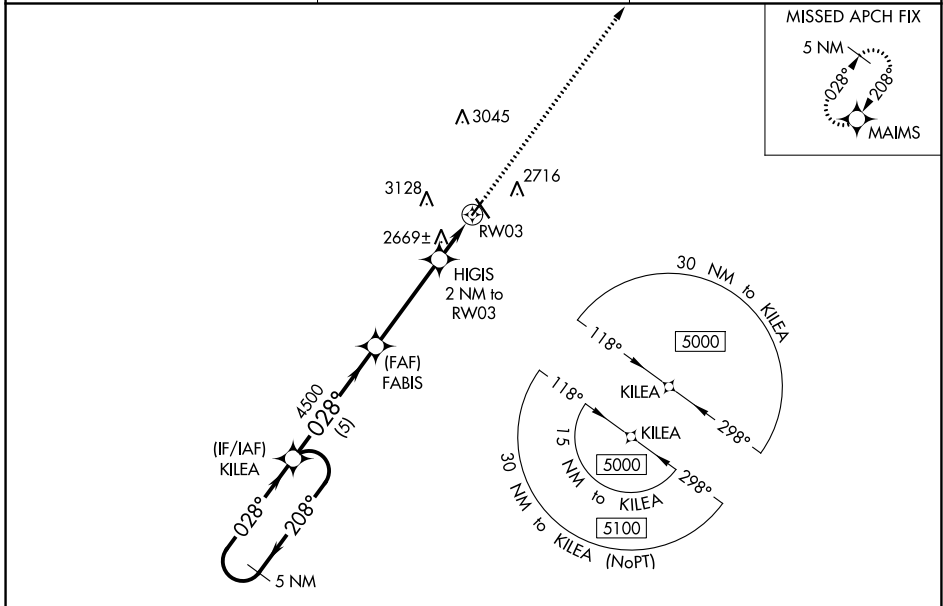
# RNAV (GPS) RWY 3

MILLER FLD (VTN)

**⚠** Baro-VNAV NA when using Ainsworth Rgnl altimeter setting. For uncompensated Baro-VNAV systems, LNAV/VNAV NA below -25°C (-13°F) or above 54°C (130°F). DME/DME RNP-0.3 NA. VDP NA with Ainsworth Rgnl altimeter setting. When local altimeter setting not received, use Ainsworth Rgnl altimeter setting and increase all DA 70 feet and all MDA 80 feet, increase LNAV/VNAV Cat A/B visibility 1/8 mile.

**MISSED APPROACH:**  
Climb to 5000 direct MAIMS and hold.

ASOS <b>118.075</b>	DENVER CENTER <b>127.95 338.2</b>	UNICOM <b>122.8 (CTAF) 0</b>
------------------------	--------------------------------------	---------------------------------



NC-2, 02 DEC 2021 to 30 DEC 2021

NC-2, 02 DEC 2021 to 30 DEC 2021

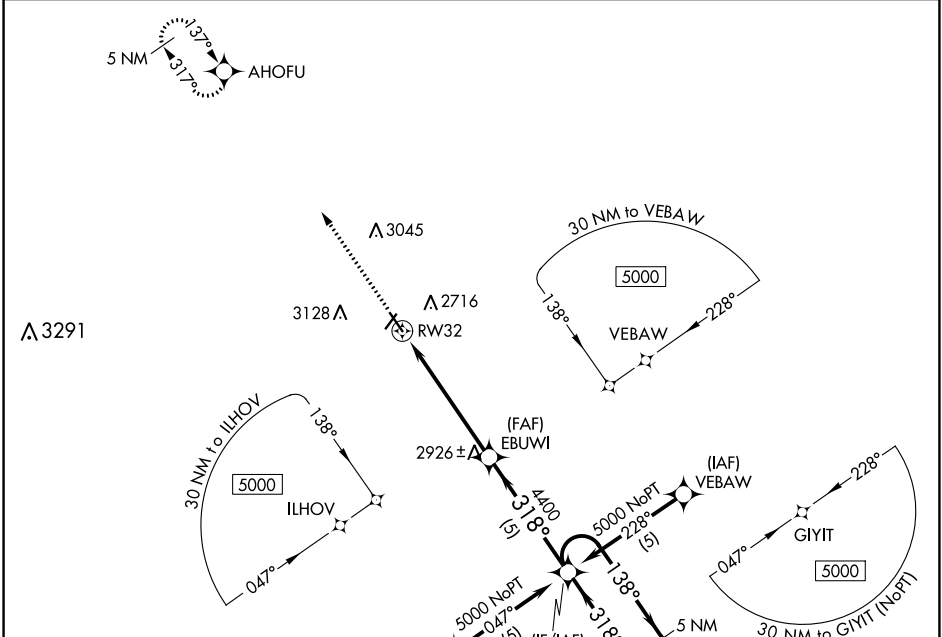
WAAS CH <b>40010</b> <b>W32A</b>	APP CRS <b>318°</b>	Rwy Idg TDZE Apt Elev	<b>4704</b> <b>2589</b> <b>2595</b>
----------------------------------------	------------------------	-----------------------------	-------------------------------------------

# RNAV (GPS) RWY 32

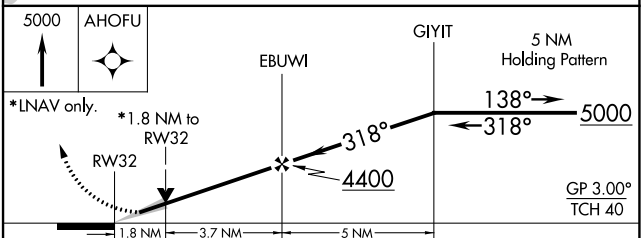
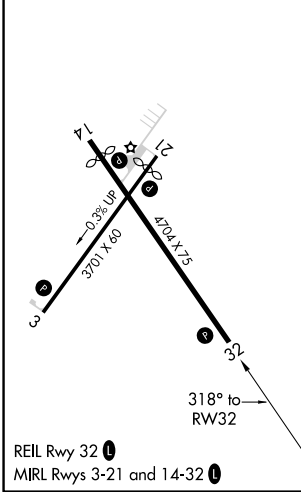
MILLER FLD (VTN)

RNP APCH.	MISSED APPROACH: Climb to 5000 direct AHOFU and hold.
Baro-VNAV NA below -20°C (-4°F).	

ASOS <b>118.075</b>	DENVER CENTER <b>127.95 338.2</b>	UNICOM <b>122.8 (CTAF) 0</b>
------------------------	--------------------------------------	---------------------------------



ELEV 2595	TDZE 2589
-----------	-----------



CATEGORY	A	B	C	D
LPV DA	2841-1	252 (300-1)		NA
LNAV/VNAV DA	2961-1¼	372 (400-1¼)		NA
LNAV MDA	3180-1	591 (600-1)		NA
CIRCLING	3180-1¼ 585 (600-1¼)	3560-1½ 965 (1000-1½)		NA

NC-2, 02 DEC 2021 to 30 DEC 2021

NC-2, 02 DEC 2021 to 30 DEC 2021