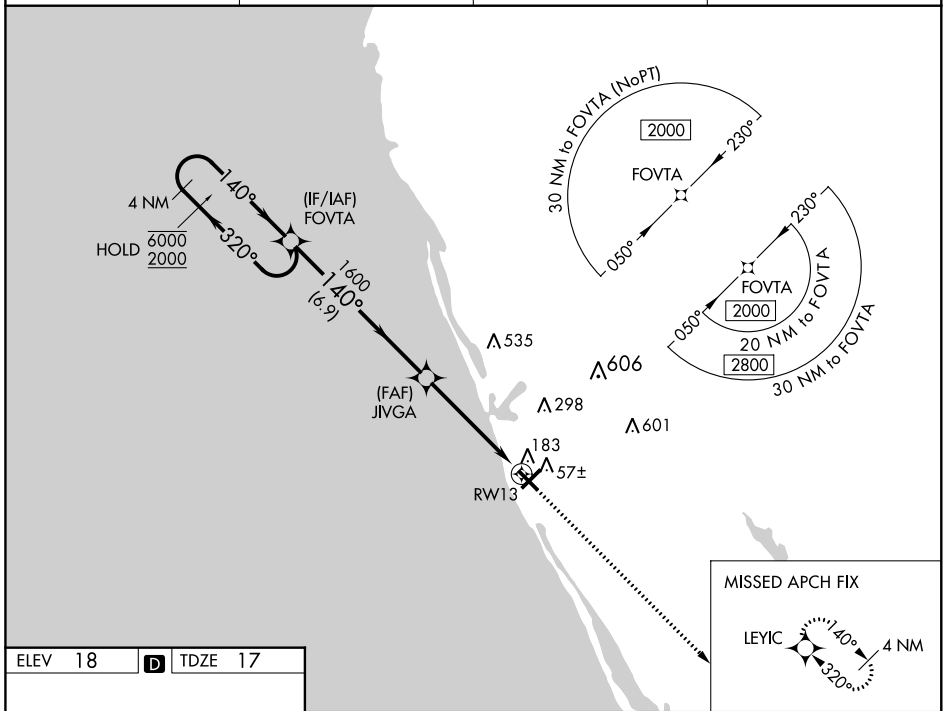


WAAS CH 86423 W13A	APP CRS 140°	Rwy Idg TDZE Apt Elev	4999 17 18
--	------------------------	-----------------------------	---------------------------------------

RNAV (GPS) RWY 13

VENICE MUNI (VNC)

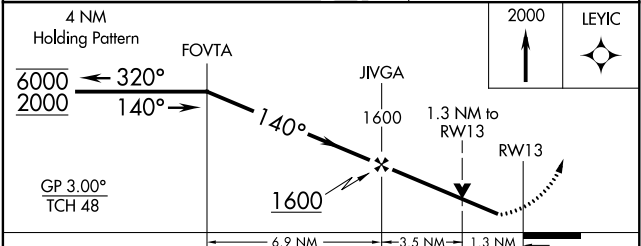
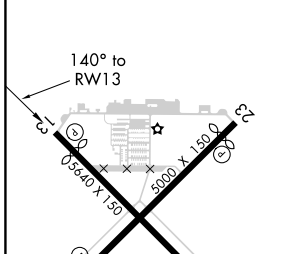
RNP APCH - GPS.		MISSED APPROACH: Climb to 2000 direct LEYIC and hold.	
<p>⚠ Rwy 13 helicopter visibility reduction below 3/4 SM NA. For uncompensated Baro-VNAV systems, LNAV/VNAV NA below -15°C or above 54°C.</p>		AWOS-3 119.275	TAMPA APP CON 119.65 353.575
		CLNC DEL 118.075	UNICOM 122.725 (CTAF) 0



SE-3, 27 JAN 2022 to 24 FEB 2022

SE-3, 27 JAN 2022 to 24 FEB 2022

ELEV 18	D	TDZE 17
---------	----------	---------



CATEGORY	A	B	C	D
LPV DA		267-3/4	250 (300-3/4)	
LNAV/VNAV DA		364-1	347 (400-1)	
LNAV MDA	460-1	443 (500-1)	460-1 3/8	443 (500-1 3/8)
C CIRCLING	500-1	482 (500-1)	680-1 3/4 662 (700-1 3/4)	920-3 902 (1000-3)

WAAS CH 53433 W23A	APP CRS 230°	Rwy Idg TDZE Apt Elev	4377 18 18
--	------------------------	-----------------------------	---------------------------------------

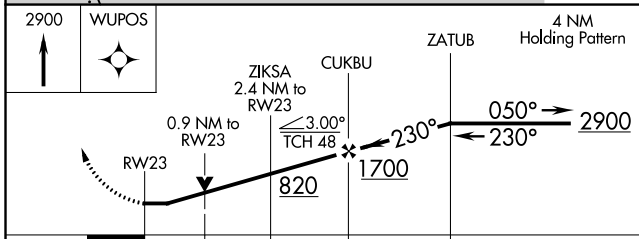
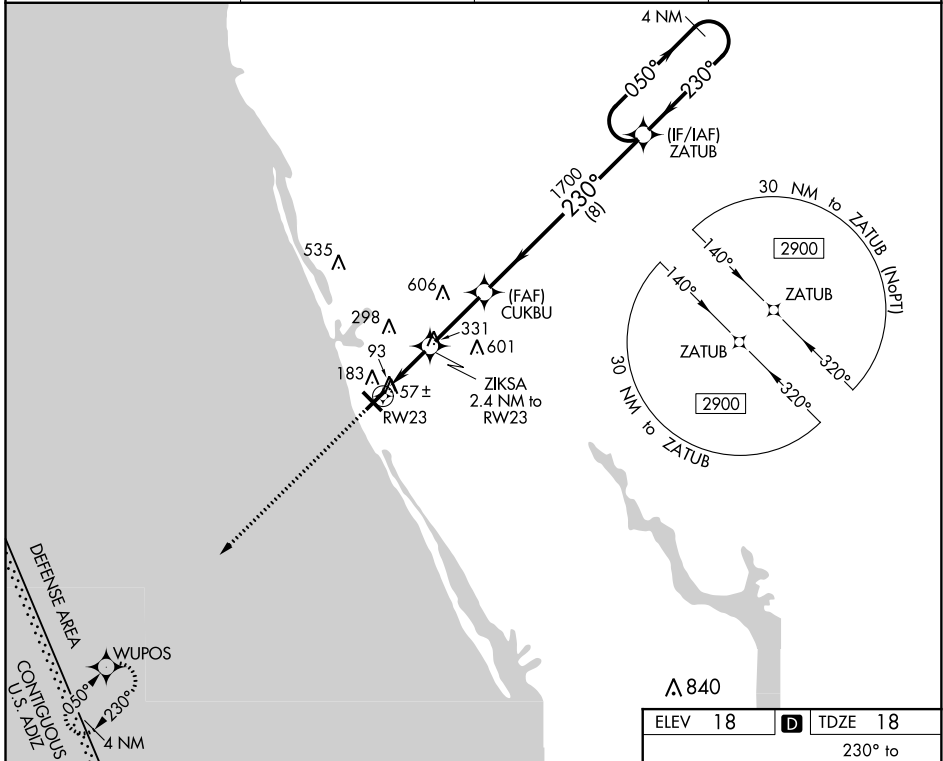
RNAV (GPS) RWY 23

VENICE MUNI (VNC)

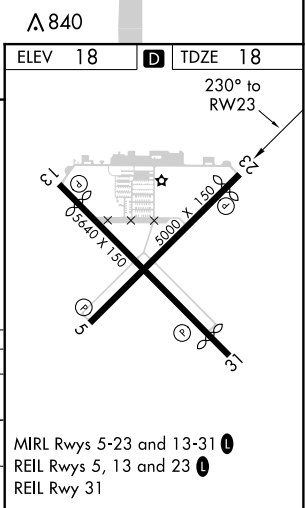
⚠ When local altimeter setting not received, use Sarasota altimeter setting and increase all MDA 60 feet and increase LP and LNAV Cats C, D visibility 1/8 mile, and Circling Cat C visibility 1/4 mile. DME/DME RNP-0.3 NA. VDP NA with Sarasota altimeter setting. Helicopter visibility reduction below 3/4 SM NA.

MISSED APPROACH: Climb to 2900 direct WUPOS and hold.

AWOS-3 119.275	TAMPA APP CON 119.65 353.575	CLNC DEL 118.075	UNICOM 122.725 (CTAF) 📻
--------------------------	--	----------------------------	--



CATEGORY	A	B	C	D
LP MDA	360-1		342 (400-1)	
LNAV MDA	440-1	422 (500-1)	440-1 1/4	422 (500-1 1/4)
📻 CIRCLING	500-1	482 (500-1)	700-2 682 (700-2)	920-3 902 (1000-3)



SE-3, 27 JAN 2022 to 24 FEB 2022

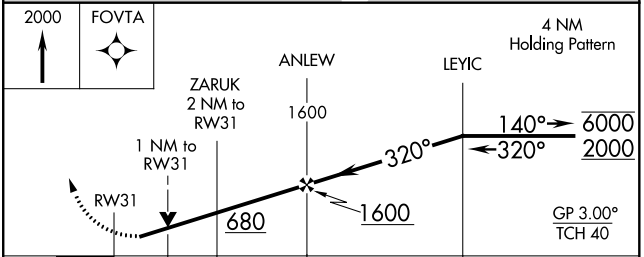
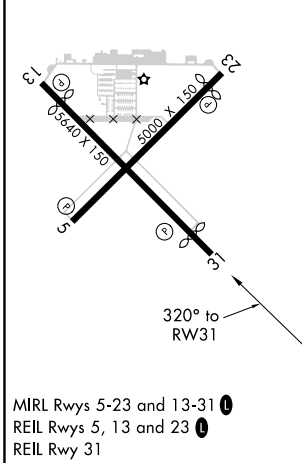
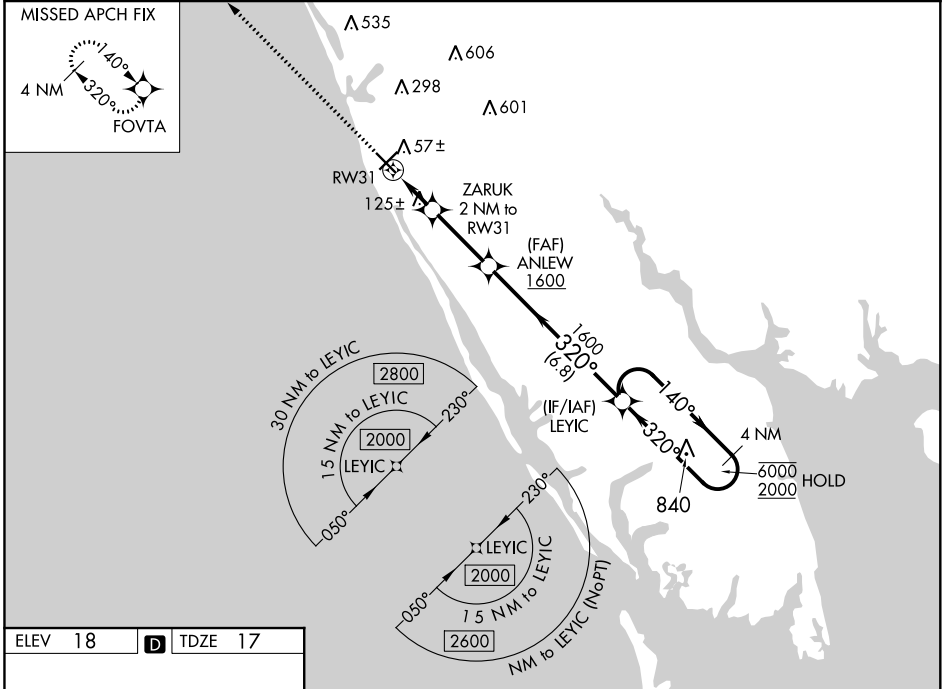
SE-3, 27 JAN 2022 to 24 FEB 2022

WAAS CH 78223 W31A	APP CRS 320°	Rwy Idg 4999 TDZE 17 Apt Elev 18
--	------------------------	---

RNAV (GPS) RWY 31

VENICE MUNI (VNC)

RNP APCH - GPS.		MISSED APPROACH: Climb to 2000 direct FOVTA and hold.	
Rwy 31 helicopter visibility reduction below 3/4 SM NA. For uncompensated Baro-VNAV systems, LNAV/VNAV NA below -1.5°C or above 54°C.			
AWOS-3 119.275	TAMPA APP CON 119.65 353.575	CLNC DEL 118.075	UNICOM 122.725 (CTAF) ①



	1 NM	1 NM	2.9 NM	6.8 NM	
CATEGORY	A		B	C	D
LPV DA			267-3/4	250 (300-3/4)	
LNAV/VNAV DA			296-7/8	279 (300-7/8)	
LNAV MDA			380-1	363 (400-1)	
C CIRCLING	500-1	482 (500-1)	680-1 3/4 662 (700-1 3/4)	920-3 902 (1000-3)	

SE-3, 27 JAN 2022 to 24 FEB 2022

SE-3, 27 JAN 2022 to 24 FEB 2022

WAAS CH 69234 W05A	APP CRS 050°	Rwy Idg TDZE Apt Elev	5000 17 18
--	------------------------	-----------------------------	---------------------------------------

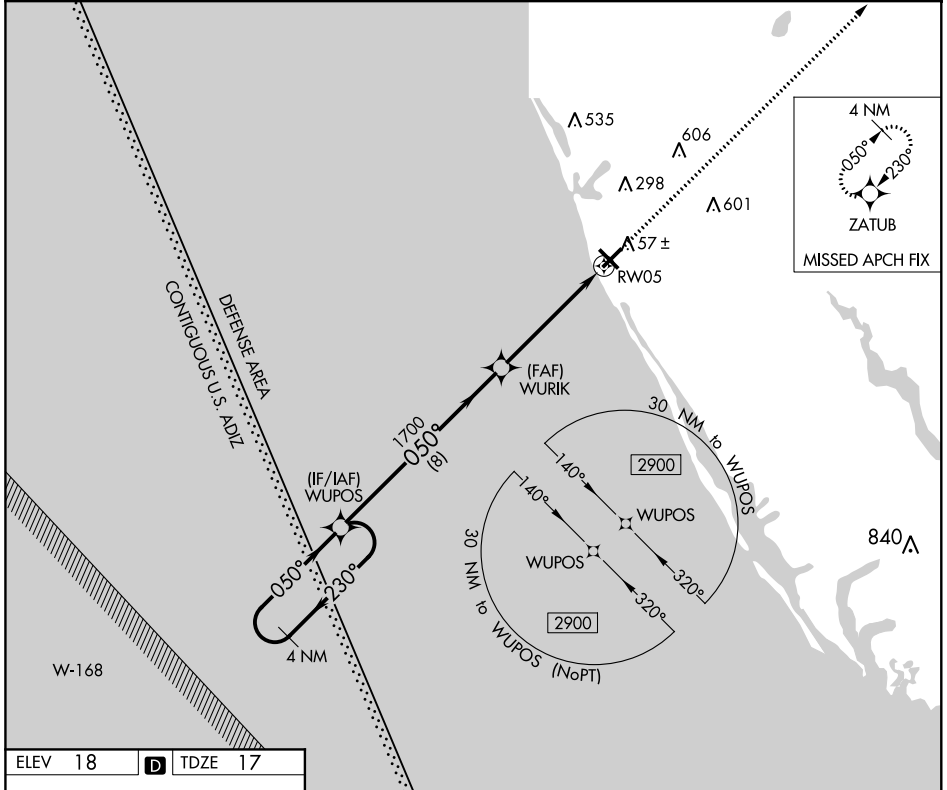
RNAV (GPS) RWY 5

VENICE MUNI (VNC)

⚠ When local altimeter setting not received, use Sarasota altimeter setting and increase all MDA 60 feet, increase LNAV Cat C, D visibility 1/8 mile, and Circling Cat C visibility 1/4 mile. DME/DME RNP-0.3 NA.
⚠ Helicopter visibility reduction below 3/4 SM NA.

MISSED APPROACH:
Climb to 2900 direct ZATUB and hold.

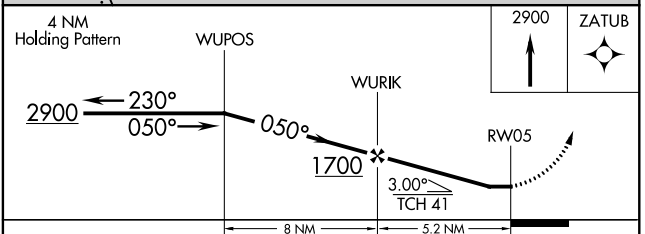
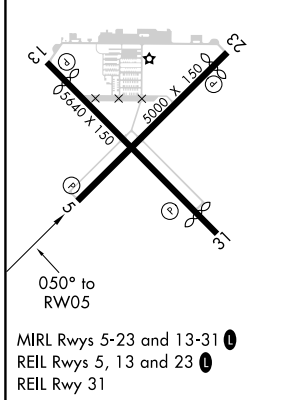
AWOS-3 119.275	TAMPA APP CON 119.65 353.575	CLNC DEL 118.075	UNICOM 122.725 (CTAF) 0
--------------------------	--	----------------------------	-----------------------------------



SE-3, 27 JAN 2022 to 24 FEB 2022

SE-3, 27 JAN 2022 to 24 FEB 2022

ELEV 18	D	TDZE 17
---------	----------	---------



CATEGORY	A	B	C	D
LP MDA	460-1	443 (500-1)	460-1 3/8	443 (500-1 3/8)
LNAV MDA	480-1	463 (500-1)	480-1 3/8	463 (500-1 3/8)
C CIRCLING	500-1	482 (500-1)	700-2 682 (700-2)	920-3 902 (1000-3)