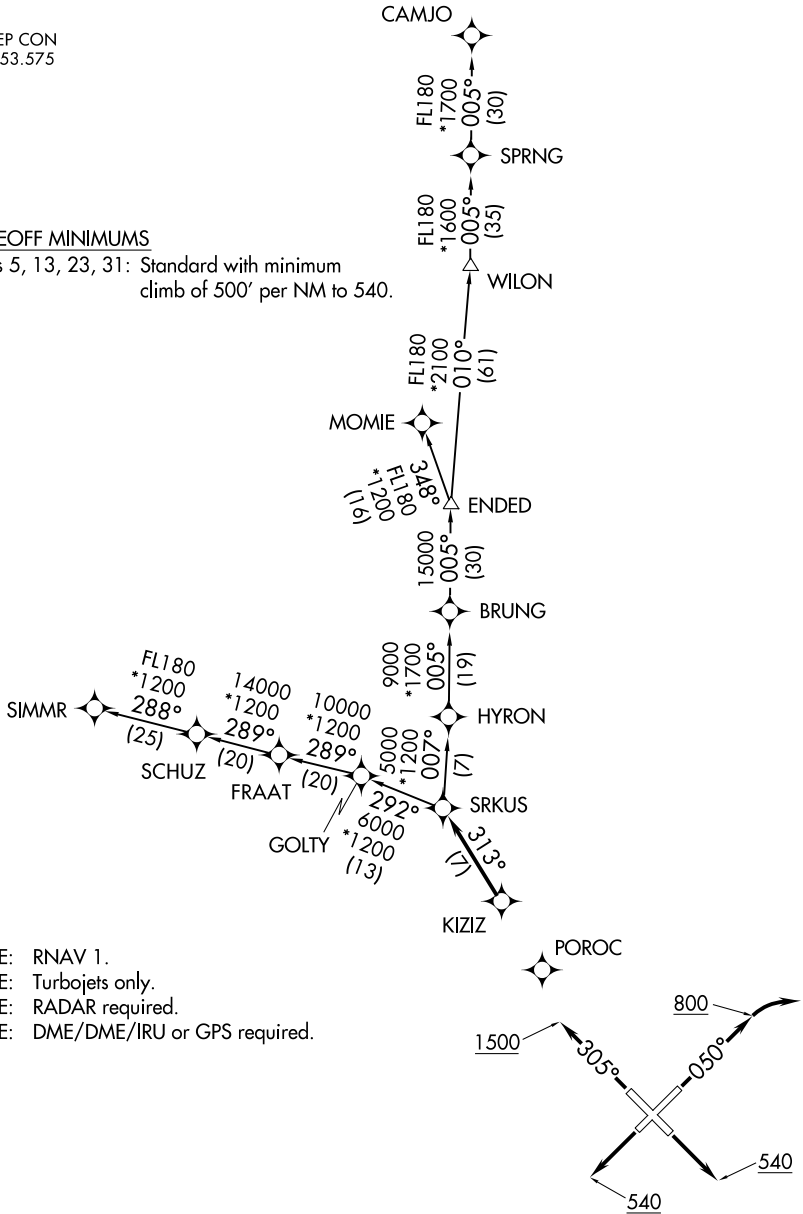


SRKUS FOUR DEPARTURE (RNAV)

AWOS-3
119.275
CLNC DEL
118.25
TAMPA DEP CON
119.65 353.575

TAKEOFF MINIMUMS

Rwys 5, 13, 23, 31: Standard with minimum climb of 500' per NM to 540.



- NOTE: RNAV 1.
- NOTE: Turbojets only.
- NOTE: RADAR required.
- NOTE: DME/DME/IRU or GPS required.

NOTE: Chart not to scale.

(NARRATIVE ON FOLLOWING PAGE)

SE-3, 27 JAN 2022 to 24 FEB 2022

SE-3, 27 JAN 2022 to 24 FEB 2022

SRKUS FOUR DEPARTURE (RNAV)



DEPARTURE ROUTE DESCRIPTION

TAKEOFF RWY 5: Climb heading 050° to 800 before turning right, thence. . . .

TAKEOFF RWYS 13, 23: Climb on assigned heading to at or above 540, thence. . . .

TAKEOFF RWY 31: Climb heading 305° to 1500 before proceeding on course, thence. . . .

. . . .for vectors to KIZIZ, then on track 313° to SRKUS, maintain 2000 or as assigned by ATC. Expect clearance to filed altitude/flight level 10 minutes after departure.

CAMJO TRANSITION (SRKUS4.CAMJO)

MOMIE TRANSITION (SRKUS4.MOMIE)

SIMMR TRANSITION (SRKUS4.SIMMR)

SE-3, 27 JAN 2022 to 24 FEB 2022

SE-3, 27 JAN 2022 to 24 FEB 2022