

WAAS CH <b>66030</b> W01A	APP CRS <b>008°</b>	Rwy Idg TDZE Apt Elev	<b>4702</b> <b>104</b> <b>107</b>
---------------------------------	------------------------	-----------------------------	---

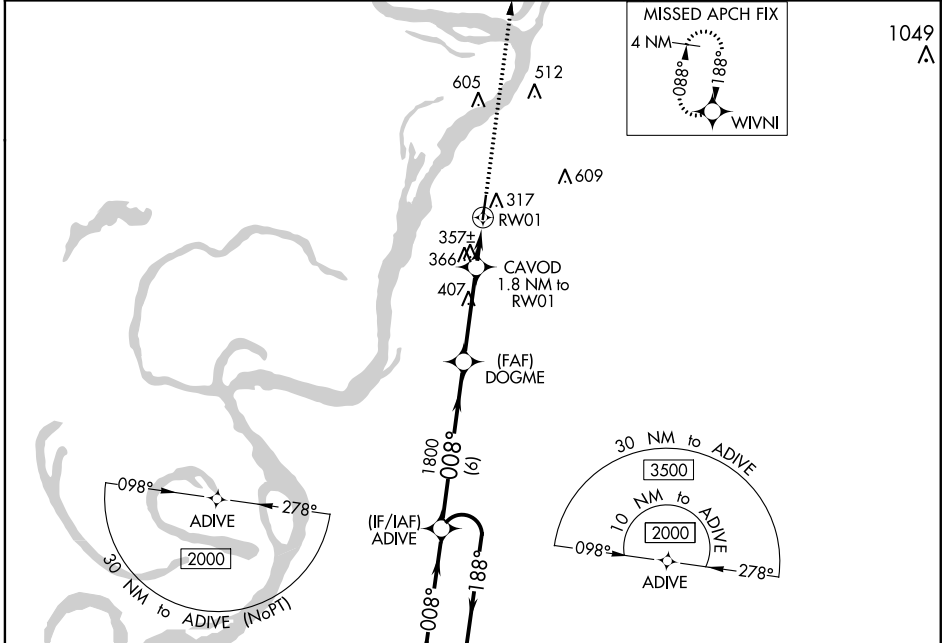
# RNAV (GPS) RWY 1

VICKSBURG MUNI (VKS)

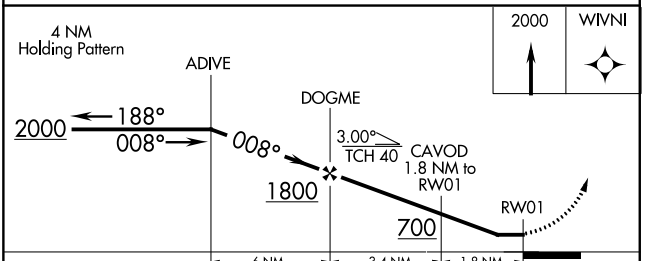
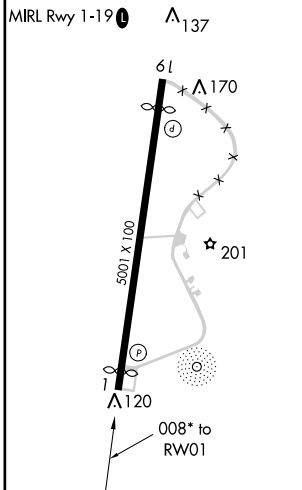
**⚠** Circling NA for Cat D west of Rwy 1-19. DME/DME RNP-0.3 NA. When local altimeter setting not received, use Vicksburg Tallulah Rgnl altimeter setting and increase all MDA 40 feet, increase LP Cats C/D visibility ¼ mile, LNAV Cats C/D visibility ½ mile and Circling Cat C visibility ¼ mile. Helicopter visibility reduction below 1SM not authorized. Procedure NA at night.

**⚠** MISSED APPROACH: Climb to 2000 direct WIVNI and hold.

AWOS-3 <b>118.85</b>	MEMPHIS CENTER <b>132.5 259.1</b>	UNICOM <b>122.8 (CTAF)</b> <b>0</b>
-------------------------	--------------------------------------	--



ELEV 107	TDZE 104
----------	----------



CATEGORY	A	B	C	D
LP MDA	620-1	516 (600-1)	620-1 3/8	516 (600-1 3/8)
LNAV MDA	640-1	536 (500-1)	640-1 1/2	536 (500-1 1/2)
CIRCLING	700-1	593 (600-1)	700-1 1/2 593 (600-1 1/2)	860-2 1/2 753 (800-2 1/2)

SC-4, 01 MAR 2018 to 29 MAR 2018

SC-4, 01 MAR 2018 to 29 MAR 2018

WAAS CH <b>60932</b> W19A	APP CRS <b>188°</b>	Rwy Idg TDZE Apt Elev	<b>4529</b> <b>106</b> <b>107</b>
---------------------------------	------------------------	-----------------------------	---

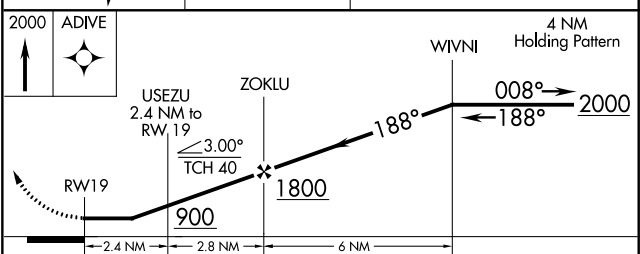
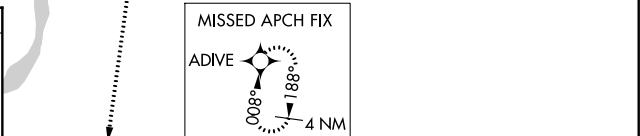
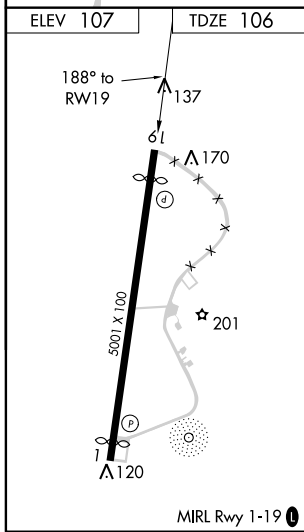
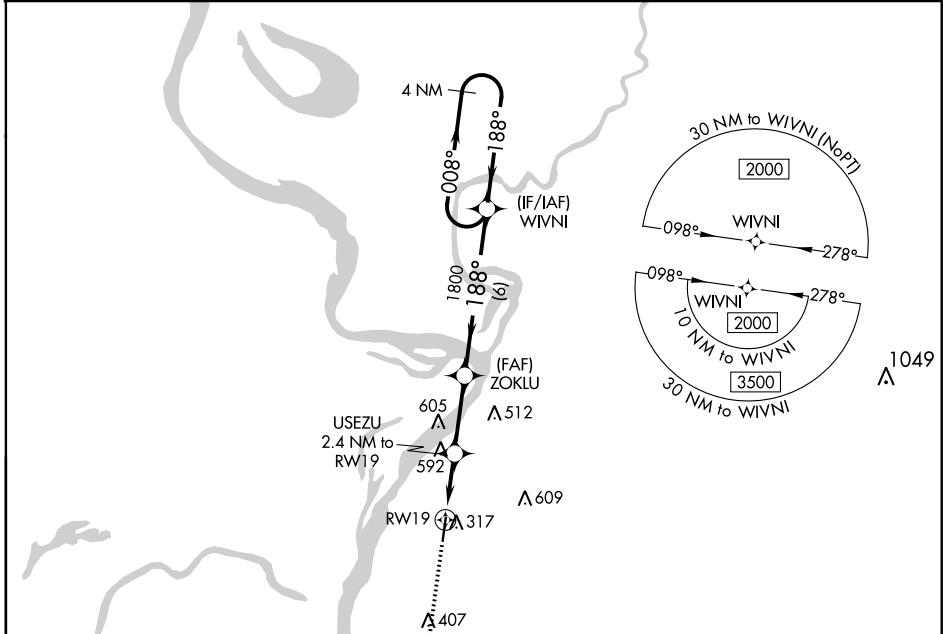
# RNAV (GPS) RWY 19

VICKSBURG MUNI (VKS)

**⚠** Circling NA for Cat D west of Rwy 1-19. DME/DME RNP-0.3 NA. When local altimeter setting not received, use Vicksburg Tallulah Rgnl altimeter setting and increase all MDA 40 feet, increase LP Cat C/D visibility 1/8 mile and LNAV Cat C/D 1/2 mile and Circling Cat C 1/4 mile. Procedure NA at night. Helicopter visibility reduction below 1 SM not authorized.

**MISSED APPROACH:**  
Climb to 2000 direct ADIVE and hold.

AWOS-3 <b>118.85</b>	MEMPHIS CENTER <b>132.5 259.1</b>	UNICOM <b>122.8 (CTAF)</b> <b>📻</b>
-------------------------	--------------------------------------	--



CATEGORY	A	B	C	D
LP MDA	660-1	554 (600-1)	660-1 <sup>3</sup> / <sub>8</sub>	554 (600-1 <sup>3</sup> / <sub>8</sub> )
LNAV MDA	860-1 754 (800-1)	860-1 <sup>1</sup> / <sub>4</sub> 754 (800-1 <sup>1</sup> / <sub>4</sub> )	860-2	754 (800-2)
CIRCLING	860-1 753 (800-1)	860-1 <sup>1</sup> / <sub>4</sub> 753 (800-1 <sup>1</sup> / <sub>4</sub> )	860-2 <sup>1</sup> / <sub>4</sub> 753 (800-2 <sup>1</sup> / <sub>4</sub> )	860-2 <sup>1</sup> / <sub>2</sub> 753 (800-2 <sup>1</sup> / <sub>2</sub> )

SC-4, 01 MAR 2018 to 29 MAR 2018

SC-4, 01 MAR 2018 to 29 MAR 2018