

LOC/DME I-HWG <b>110.7</b> Chan <b>44</b>	APP CRS <b>120°</b>	Rwy Idg TDZE Apt Elev	<b>4199</b> <b>2189</b> <b>2205</b>
---	------------------------	-----------------------------	---

## ILS or LOC RWY 12L

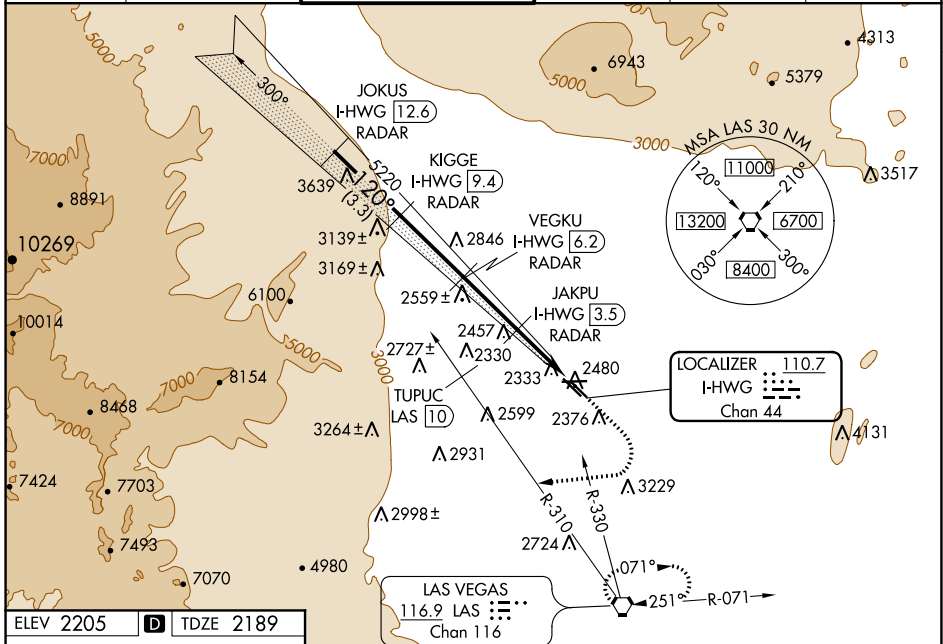
NORTH LAS VEGAS (VGT)

DME and RADAR required.

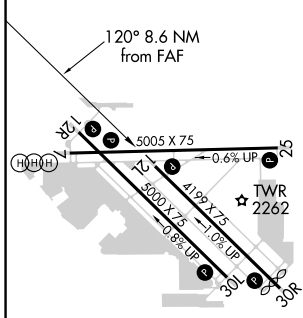
▼ When local altimeter setting not received, use McCarran Intl altimeter setting and increase DA to 2478, and visibility Cats A/B ¼ mile; increase all MDA 40 feet. Rwy 12L helicopter visibility reduction below ¼ SM NA.

MISSED APPROACH: Climb to 2600, then climbing right turn heading 250° to 6000, intercept LAS R-310 outbound to TUPUC/LAS 10 DME then turn right via LAS R-330 inbound to LAS VORTAC and hold.

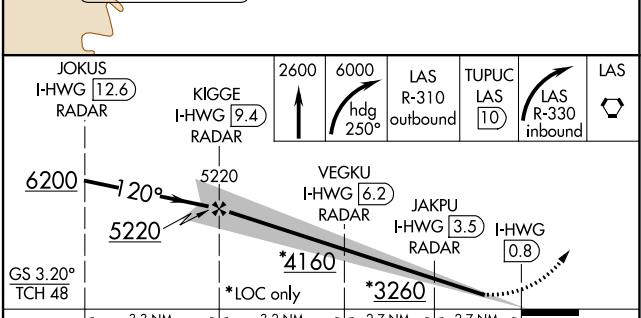
ATIS <b>118.05</b>	LAS VEGAS APP CON <b>119.4 360.85</b>	NORTH LAS VEGAS TOWER* <b>125.7</b> (CTAF) <b>360.75</b>	GND CON <b>121.7</b>	CLNC DEL <b>124.0</b>	UNICOM <b>122.95</b>
-----------------------	--	---	-------------------------	--------------------------	-------------------------



ELEV 2205	D	TDZE 2189
-----------	---	-----------



REIL all Rws	MIRL all Rws
FAF to MAP 8.6 NM	
Knots	60 90 120 150 180
Min:Sec	8:36 5:44 4:18 3:26 2:52



CATEGORY	A	B	C	D
S-ILS 12L	2456-1	267 (300-1)		NA
S-LOC 12L	2620-1	431 (500-1)		NA
CIRCLING	2720-1	515 (600-1)		NA

SW-4, 22 APR 2021 to 20 MAY 2021

SW-4, 22 APR 2021 to 20 MAY 2021

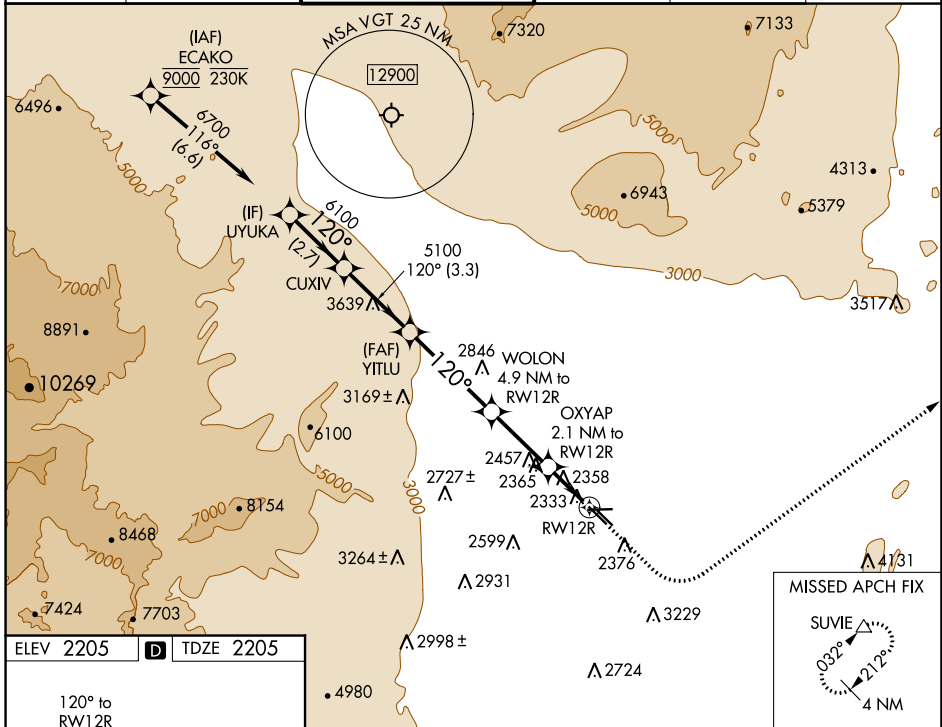
WAAS CH <b>69443</b> <b>W12A</b>	APP CRS <b>120°</b>	Rwy Idg TDZE Apt Elev	<b>5000</b> <b>2205</b> <b>2205</b>
--	------------------------	-----------------------------	---

# RNAV (GPS) RWY 12R

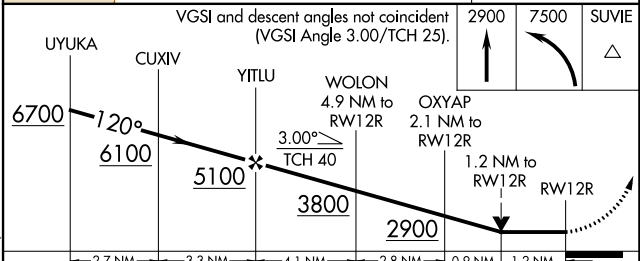
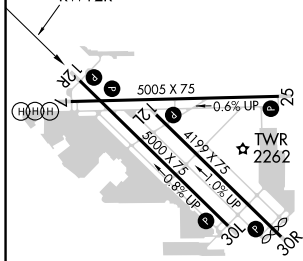
NORTH LAS VEGAS (VGT)

RNP APCH.	MISSED APPROACH: Climb to 2900 then climbing left turn to 7500 direct SUVIE and hold, continue climb-in-hold to 7500.
Rwy 12R helicopter visibility reduction below 3/4 SM NA.	

ATIS <b>118.05</b>	LAS VEGAS APP CON <b>119.4 360.85</b>	NORTH LAS VEGAS TOWER* <b>125.7 (CTAF) 360.75</b>	GND CON <b>121.7</b>	CLNC DEL <b>124.0</b>	UNICOM <b>122.95</b>
-----------------------	--	--	-------------------------	--------------------------	-------------------------



ELEV 2205	<b>D</b>	TDZE 2205
-----------	----------	-----------



CATEGORY	A	B	C	D
LP MDA	2620-1	415 (500-1)	2620-1½	415 (500-1½)
LNAV MDA	2820-1	615 (700-1)	2840-1¾	615 (700-1¾)
<b>C</b> CIRCLING	2820-1	615 (700-1)	2840-1¾ 635 (700-1¾)	3540-3 1335 (1400-3)

REIL all Rwys   
MIRL all Rwys

SW-4, 22 APR 2021 to 20 MAY 2021

SW-4, 22 APR 2021 to 20 MAY 2021