

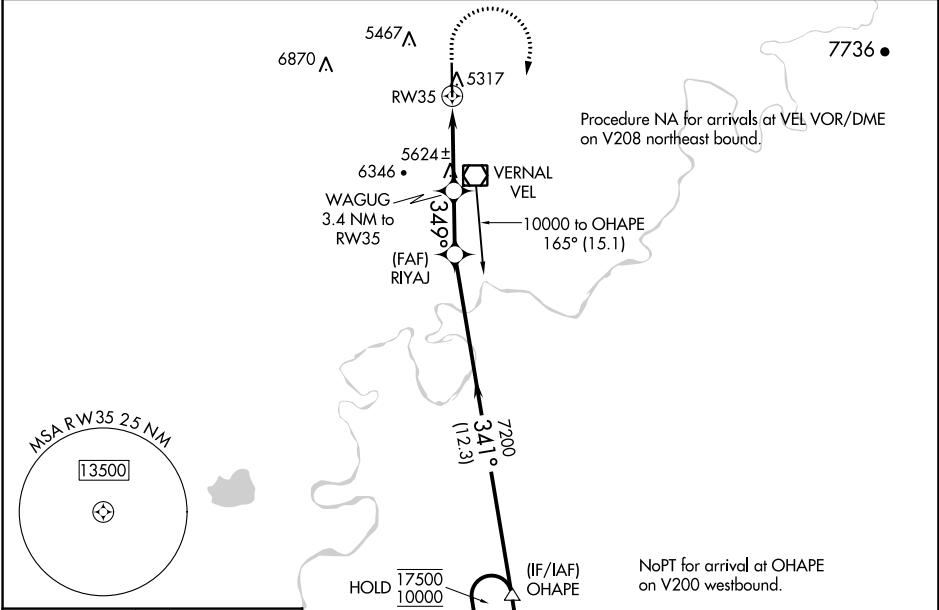
# RNAV (GPS) Y RWY 35

VERNAL RGNL (VEL)

APP CRS	Rwy Idg	<b>7000</b>
<b>349°</b>	TDZE	<b>5274</b>
	Apt Elev	<b>5274</b>

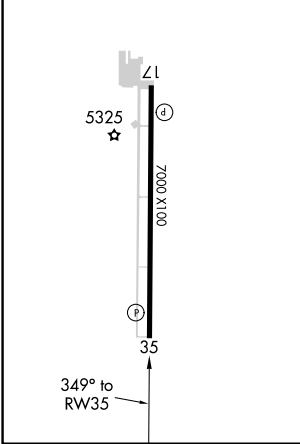
RNP APCH.	MISSED APPROACH: Climb to 7000 then climbing right turn to 10000 direct OHAPE and hold. *Missed approach requires minimum climb of 300 feet per NM to 7500.
<p><b>⚠</b> Circling NA west of Rwy 17-35. Rwy 35 helicopter visibility reduction below ¼ NA.</p> <p><b>❄</b> -27°C</p>	

ASOS <b>135.175</b>	SALT LAKE CENTER <b>119.95 377.15</b>	UNICOM <b>122.7 (CTAF)</b>
------------------------	--	-------------------------------

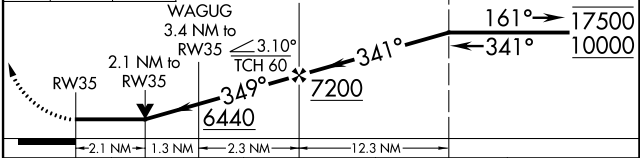


ELEV 5274	<b>D</b> TDZE 5274
-----------	--------------------

REIL Rws 17 and 35 **Ⓢ**  
MIRL Rwy 17-35 **Ⓢ**



7000	10000	OHAPE	VGSI and descent angles not coincident (VGSI Angle 3.00/TCH 48).	OHAPE	7 NM Holding Pattern
------	-------	-------	--	-------	----------------------



CATEGORY	A	B	C	D
LNVA MDA*	5980-1	706 (800-1)	5980-2	706 (800-2)
LNVA MDA	6380-1½ 1106 (1200-1½)	6380-1½ 1106 (1200-1½)	6380-3	1106 (1200-3)
<b>C</b> CIRCLING	6380-1½ 1106 (1200-1½)	6380-1½ 1106 (1200-1½)	6380-3	6400-3 1126 (1200-3)

# RNAV (GPS) Y RWY 35

SW-4, 25 FEB 2021 to 25 MAR 2021

SW-4, 25 FEB 2021 to 25 MAR 2021

WAAS CH <b>90241</b> <b>W35A</b>	APP CRS <b>349°</b>	Rwy Ldg TDZE Apt Elev	<b>7000</b> <b>5274</b> <b>5280</b>
--	------------------------	-----------------------------	---

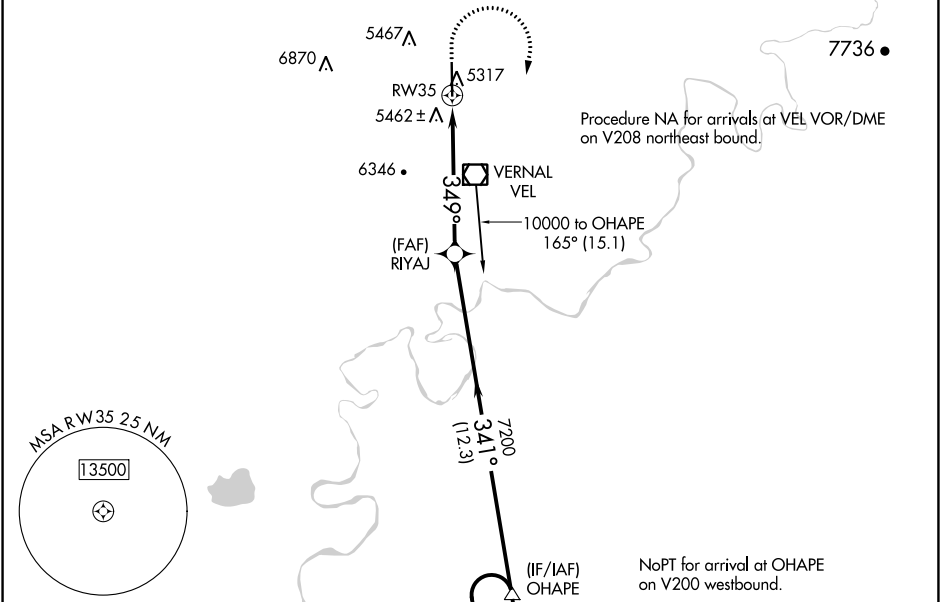
# RNAV (GPS) Z RWY 35

VERNAL RGNL (VEL)

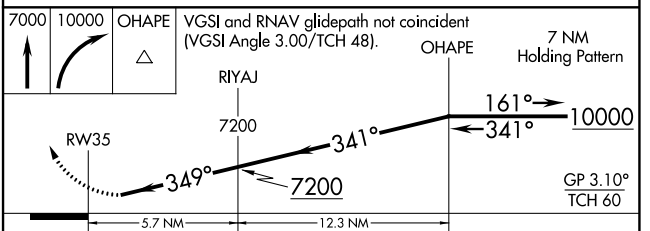
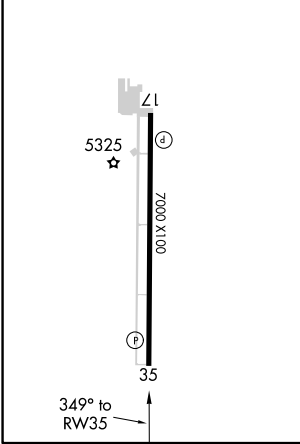
**⚠** Baro-VNAV NA when using Roosevelt altimeter setting. For uncompensated Baro-VNAV systems, LNAV/VNAV NA below -22°C (-7°F) or above 35°C (96°F). DME/DME RNP-0.3 NA. Rwy 35 helicopter visibility reduction below ¼ SM NA. When local **⚠** -27°C altimeter setting not received, use Roosevelt altimeter setting and increase all DA 76 feet, increase \*LPV all Cats visibility to 1½ SM, increase LNAV/VNAV all Cats visibility to 3 SM, and \*LNAV/VNAV all Cats visibility to 1½ SM.

**⚠** MISSED APPROACH: Climb to 7000 then climbing right turn to 10000 direct OHAPE and hold.  
\* Missed approach requires minimum climb of 290 feet per NM to 8600.

ASOS <b>135.175</b>	SALT LAKE CENTER <b>119.95 377.15</b>	UNICOM <b>122.7 (CTAF) 0</b>
------------------------	--	---------------------------------



ELEV <b>5280</b>	<b>D</b> TDZE <b>5274</b>
REIL Rws 17 and 35	
MIRL Rwy 17-35	



CATEGORY	A	B	C	D
LPV DA*		5575-1	301 (300-1)	
LPV DA		6102-3	828 (900-3)	
LNAV/VNAV DA*		5786-1½	512 (600-1½)	
LNAV/VNAV DA		6045-2½	771 (800-2½)	

SW-4, 25 FEB 2021 to 25 MAR 2021

SW-4, 25 FEB 2021 to 25 MAR 2021

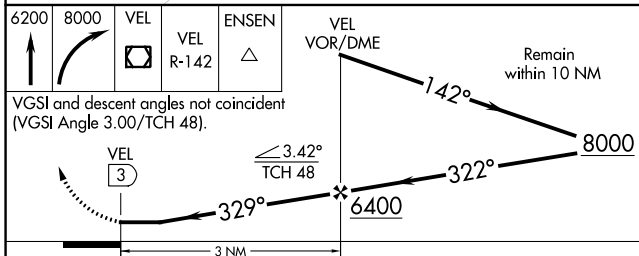
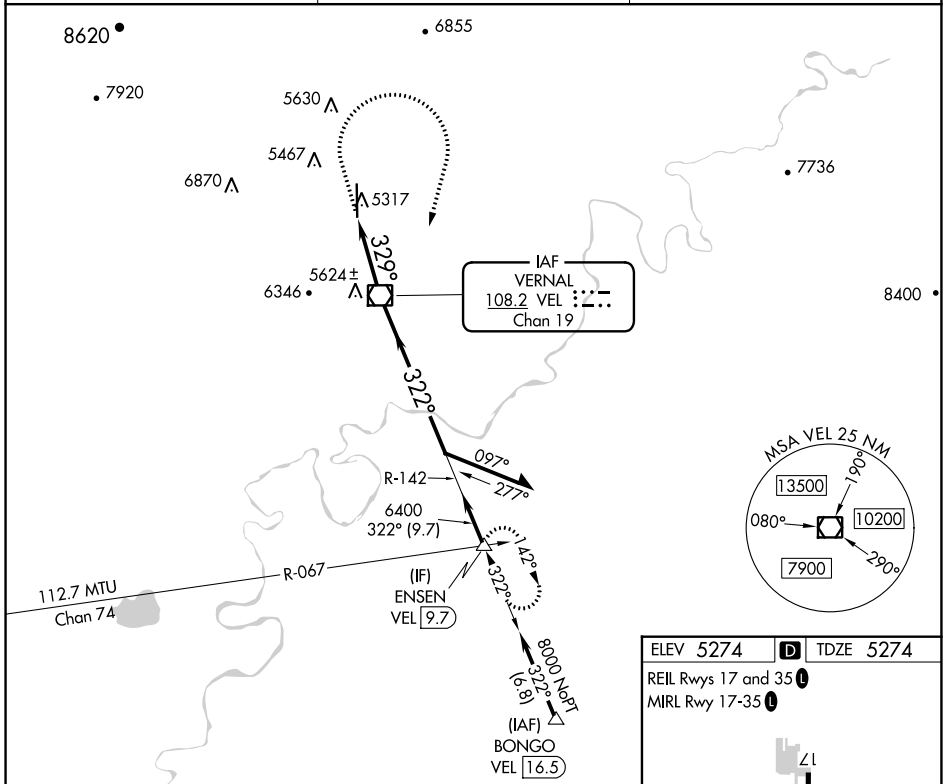
VOR/DME VEL <b>108.2</b> Chan 19	APP CRS <b>329°</b>	Rwy Idg TDZE Apt Elev <b>7000</b> <b>5274</b> <b>5274</b>
--	------------------------	--

# VOR RWY 35

VERNAL RGNL (VEL)

**⚠** Circling NA west of Rwy 17-35.  
**⚠** Rwy 35 helicopter visibility reduction below 3/4 NA.  
**⚠** MISSED APPROACH: Climb to 6200 then climbing right turn to 8000 direct VEL VOR/DME and on VEL VOR/DME R-142 to ENSEN INT/9.7 DME and hold.

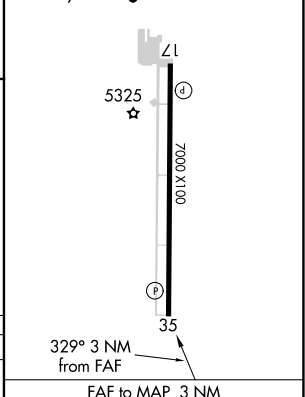
ASOS <b>135.175</b>	SALT LAKE CENTER <b>119.95 377.15</b>	UNICOM <b>122.7 (CTAF)</b>
------------------------	--	-------------------------------



ELEV 5274 **D** TDZE 5274

REIL Rwy 17 and 35 **L**

MIRL Rwy 17-35 **L**



CATEGORY	A	B	C	D
S-35	6160-1¼ 886 (900-1¼)	6160-2½ 886 (900-2½)		
<b>C</b> CIRCLING	6160-1¼ 886 (900-1¼)	6160-2¾ 886 (900-2¾)	6400-3 1126 (1200-3)	

Knots	60	90	120	150	180
Min:Sec	3:00	2:00	1:30	1:12	1:00

SW-4, 25 FEB 2021 to 25 MAR 2021

SW-4, 25 FEB 2021 to 25 MAR 2021