

(WAALK.WAALK1) 20310
WAALK ONE ARRIVAL

AL-5623 (FAA)

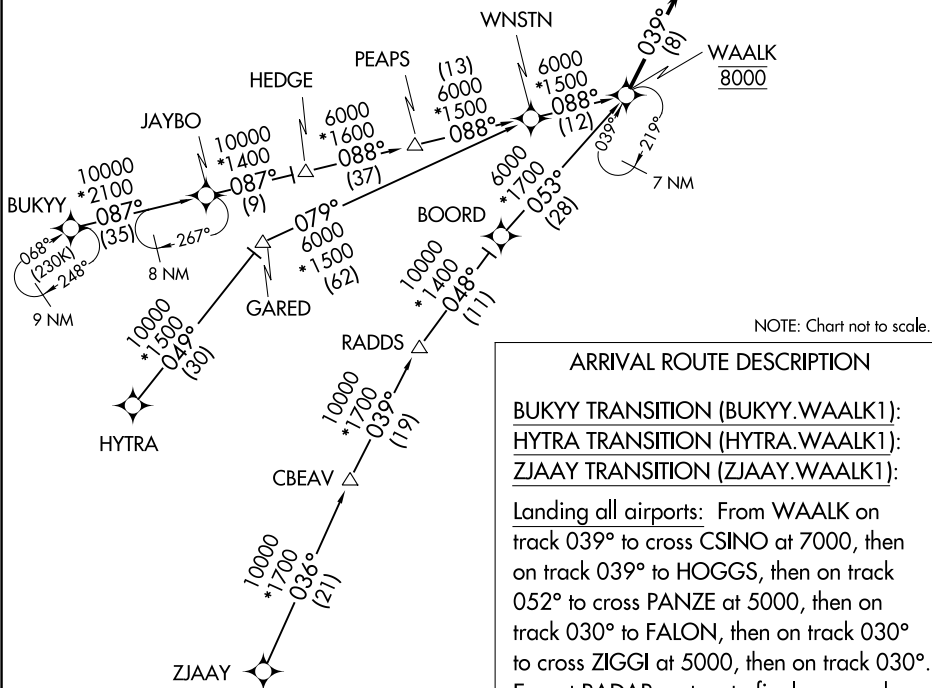
TOMS RIVER, NEW JERSEY

ATLANTIC CITY APP CON
 124.6 327.125
 MC GUIRE APP CON
 126.475 363.8
 KWRI D-ATIS
 110.6 270.1

TRENTON-ROBBINSVILLE
 MC GUIRE FIELD
 (JOINT BASE MC GUIRE
 DIX LAKEHURST)
 SOUTH JERSEY
 RGNL
 FLYING W

MONMOUTH
 EXECUTIVE
 OCEAN COUNTY
 ZIGGI
 5000
 Ldg KWRI, KN14, KBLM,
 KMJX, KVAY, and KN87

- NOTE: RADAR required.
- NOTE: RNAV 1.
- NOTE: DME/DME/IRU or GPS required.
- NOTE: HYTRA TRANSITION ATC assigned only.



NOTE: Chart not to scale.

ARRIVAL ROUTE DESCRIPTION

- BUKYY TRANSITION (BUKYY.WAALK1):**
- HYTRA TRANSITION (HYTRA.WAALK1):**
- ZJAAY TRANSITION (ZJAAY.WAALK1):**

Landing all airports: From WAALK on track 039° to cross CSINO at 7000, then on track 039° to HOGGS, then on track 052° to cross PANZE at 5000, then on track 030° to FALON, then on track 030° to cross ZIGGI at 5000, then on track 030°. Expect RADAR vectors to final approach course.

NE-2, 20 MAY 2021 to 17 JUN 2021

NE-2, 20 MAY 2021 to 17 JUN 2021

WAALK ONE ARRIVAL
 (WAALK.WAALK1) 05NOV20

TOMS RIVER, NEW JERSEY