

| | | | |
|--|------------------------|-----------------------------|---|
| WAAS CH 82041 W10A | APP CRS 096° | Rwy Idg TDZE Apt Elev | 3908 1088 1090 |
|--|------------------------|-----------------------------|---|

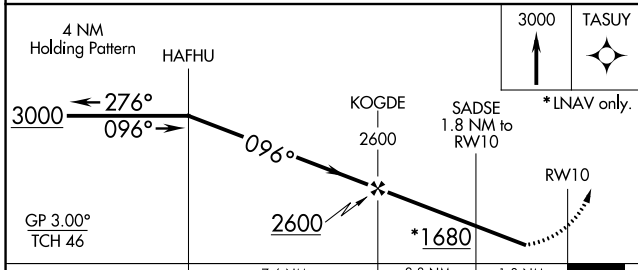
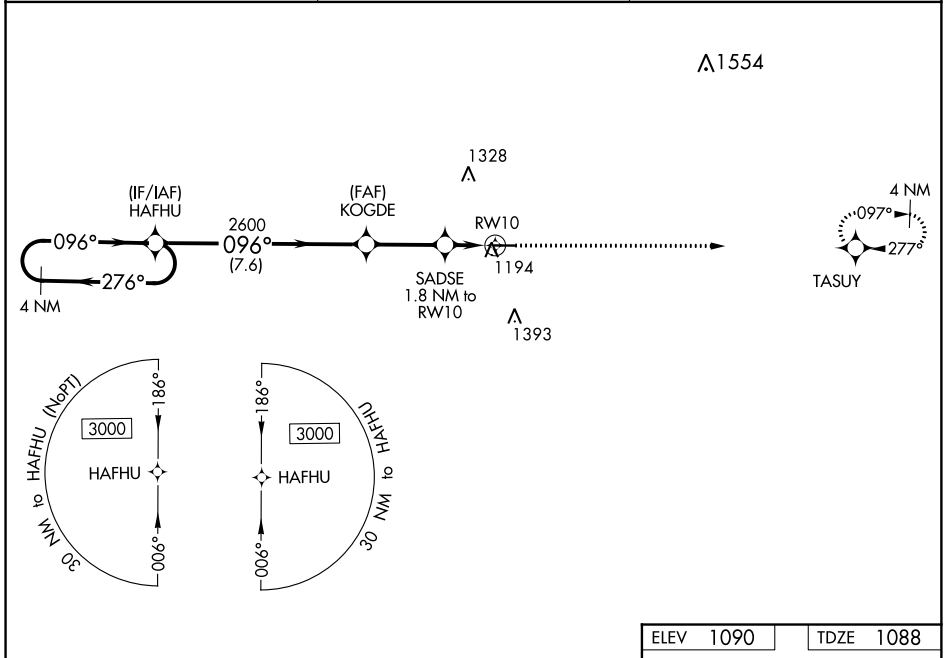
RNAV (GPS) RWY 10

NEW CASTLE-HENRY COUNTY MUNI (UWL)

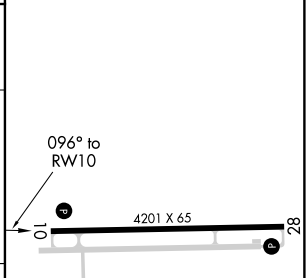
NA Baro-VNAV NA. Rwy 10 helicopter visibility reduction below 3/4 SM NA. DME/DME RNP-0.3 NA. Use Anderson altimeter setting; when not received, use Muncie altimeter setting and increase LPV DA to 1411, LNAV/VNAV DA to 1436, and all MDA 20 feet; increase LNAV Cat C/D visibility 1/8 SM.

MISSED APPROACH:
Climb to 3000 direct TASUY and hold.

| | | |
|--|---|----------------------------------|
| ANDERSON MUNI-DARLINGTON FIELD AWOS-3 128.55 | INDIANAPOLIS APP CON 135.45 317.8 | UNICOM 123.05 (CTAF) 0 |
|--|---|----------------------------------|



| | |
|-----------|-----------|
| ELEV 1090 | TDZE 1088 |
|-----------|-----------|



| CATEGORY | A | B | C | D |
|-----------------|-----------------------|-----------------------|-----------------------|-------------------------------|
| LPV DA | | 1407-1 | 319 (400-1) | |
| LNAV/VNAV DA | | 1432-1 | 344 (400-1) | |
| LNAV MDA | 1520-1 | 432 (500-1) | 1520-1 1/4 | 432 (500-1 1/4) |
| CIRCLING | 1580-1 490 (500-1) | 1600-1 510 (600-1) | 1780-2 690 (700-2) | 1780-2 1/4 690 (700-2 1/4) |

MIRL Rwy 10-28 0
REIL Rwy 10 and 28 0

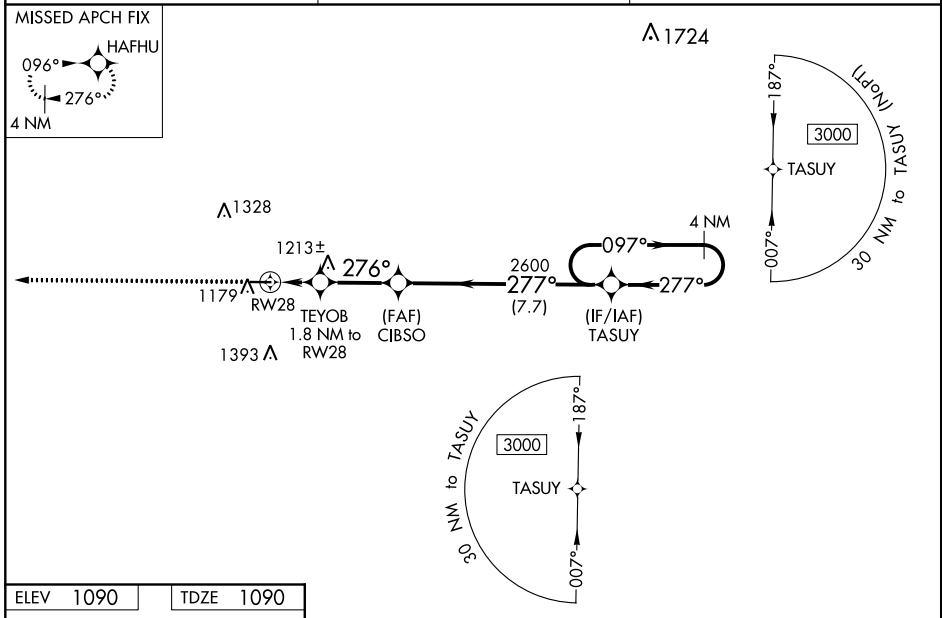
| | | | |
|--|------------------------|-----------------------------|---|
| WAAS CH 70541 W28A | APP CRS 276° | Rwy Idg TDZE Apt Elev | 3680 1090 1090 |
|--|------------------------|-----------------------------|---|

RNAV (GPS) RWY 28

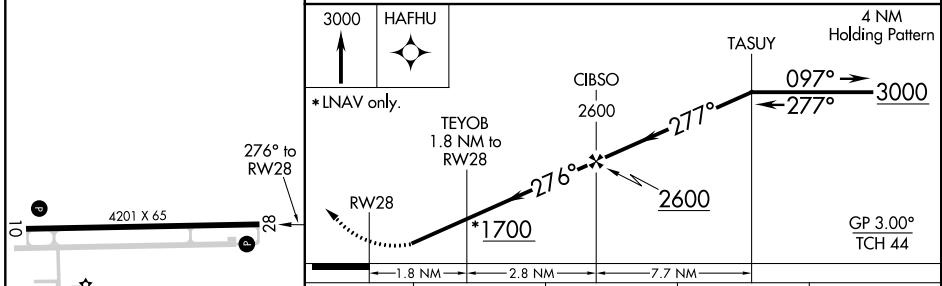
NEW CASTLE-HENRY COUNTY MUNI (UWL)

| | |
|---|--|
| <p>▽ Baro-VNAV NA. △ NA Rwy 28 helicopter visibility reduction below 3/4 SM NA. DME/DME RNP-0.3 NA. Use Anderson altimeter setting; when not received, use Muncie altimeter setting and increase LPV DA to 1416, LNAV/VNAV DA to 1441, and all MDA 20 feet.</p> | <p>MISSED APPROACH: Climb to 3000 direct HAFHU and hold.</p> |
|---|--|

| | | |
|--|---|---|
| <p>ANDERSON MUNI-DARLINGTON FIELD AWOS-3 128.55</p> | <p>INDIANAPOLIS APP CON 135.45 317.8</p> | <p>UNICOM 123.05 (CTAF) 0</p> |
|--|---|---|



| | |
|-----------|-----------|
| ELEV 1090 | TDZE 1090 |
|-----------|-----------|



| CATEGORY | A | B | C | D |
|-------------------|-----------------------|-----------------------|------------------------------------|--|
| LPV DA | | 1412-1 | 322 (400-1) | |
| LNAV/VNAV DA | | 1437-1 | 347 (400-1) | |
| LNAV MDA | 1540-1 | 450 (500-1) | 1540-1 ³ / ₈ | 450 (500-1 ³ / ₈) |
| C CIRCLING | 1580-1 490 (500-1) | 1600-1 510 (600-1) | 1780-2 690 (700-2) | 1780-2 ¹ / ₄ 690 (700-2 ¹ / ₄) |

EC-2, 29 MAR 2018 to 26 APR 2018

EC-2, 29 MAR 2018 to 26 APR 2018