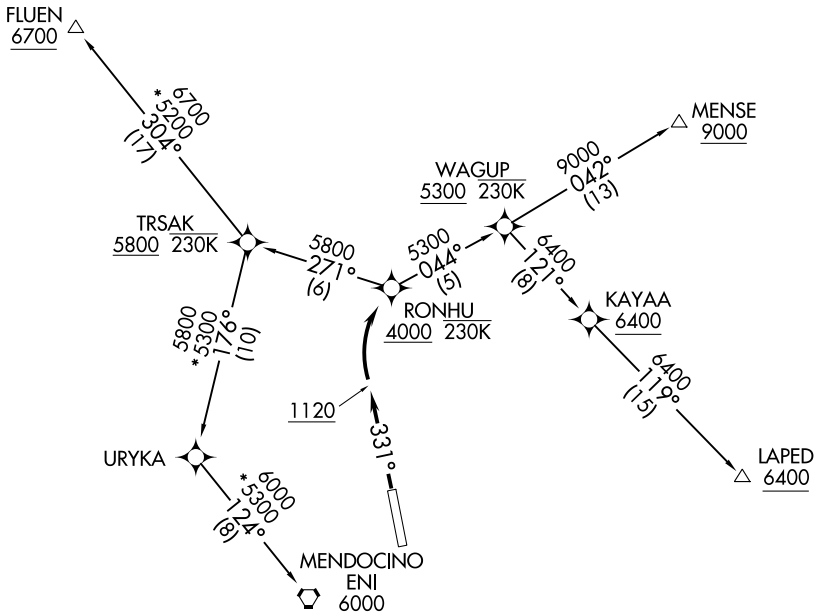


OAKLAND CENTER
127.8 353.5
CTAF
123.0

TAKEOFF MINIMUMS

Rwy 33: MENSE TRANSITION, minimum climb of 500' per NM to 1120', then minimum climb of 316' per NM to 8200.
LAPED TRANSITION, minimum climb of 500' per NM to 1120', then minimum climb of 316' per NM to 6000.
FLUEN/MENDOCINO TRANSITION, minimum climb of 500' per NM to 1120', then minimum climb of 316' per NM to 5800.



- NOTE: Do not exceed 230K until passing WAGUP.
- NOTE: Do not exceed 230K until passing TRSAK.
- NOTE: GPS required.
- NOTE: RNAV-1.

NOTE: Chart not to scale.

DEPARTURE ROUTE DESCRIPTION

TAKEOFF RUNWAY 33: Climb heading 331° to 1120, then right turn direct to cross RONHU at or above 4000, thence
. . . . on assigned transition, maintain assigned altitude, expect filed altitude/flight level ten minutes after departure.

- FLUEN TRANSITION (RONHU1.FLUEN)
- LAPED TRANSITION (RONHU1.LAPED)
- MENDOCINO TRANSITION (RONHU1.ENI)
- MENSE TRANSITION (RONHU1.MENSE)

SW-2, 02 DEC 2021 to 30 DEC 2021

SW-2, 02 DEC 2021 to 30 DEC 2021

(RYPAX1.RYPAX) 17341

RYPAX ONE DEPARTURE (RNAV)

AL-698 (FAA)

UKIAH MUNI (UKI)
UKIAH, CALIFORNIA

MERRI
6700

SABBY
8300

OAKLAND CENTER
127.8 353.5
CTAF
123.0

6700
330°
(151)

8300
028°
(20)

BEYTT
230K

MENDOCINO
ENI

3100

RYPAX
3500 230K

LAPED
6200

5300
308°
(111)

5300
070°
(7)

6200
034°
(8)

WRKMN
5300 230K

CEJAA
5300

5000
147°
(17)

TAKEOFF MINIMUMS

Rwy 15: Standard with minimum climb of 678' per NM to 3100.

NOTE: MERRI and SABBY TRANSITIONS:
Do not exceed 230K until passing BEYTT.

NOTE: GPS required.

NOTE: RNAV 1

NOTE: Chart not to scale.

SW-2, 02 DEC 2021 to 30 DEC 2021

SW-2, 02 DEC 2021 to 30 DEC 2021



DEPARTURE ROUTE DESCRIPTION

TAKEOFF RUNWAY 15: Climb heading 151° to 3100', then left turn direct to cross RYPAX at or above 3500', thence. . . .

. . . . on assigned transition, maintain assigned altitude, expect filed altitude/flight level ten minutes after departure.

GETER TRANSITION (RYPAX1.GETER)

LAPED TRANSITION (RYPAX1.LAPED)

MERRI TRANSITION (RYPAX1.MERRI)

SABBY TRANSITION (RYPAX1.SABBY)

RYPAX ONE DEPARTURE (RNAV)

(RYPAX1.RYPAX) 13NOV14

UKIAH, CALIFORNIA
UKIAH MUNI (UKI)