

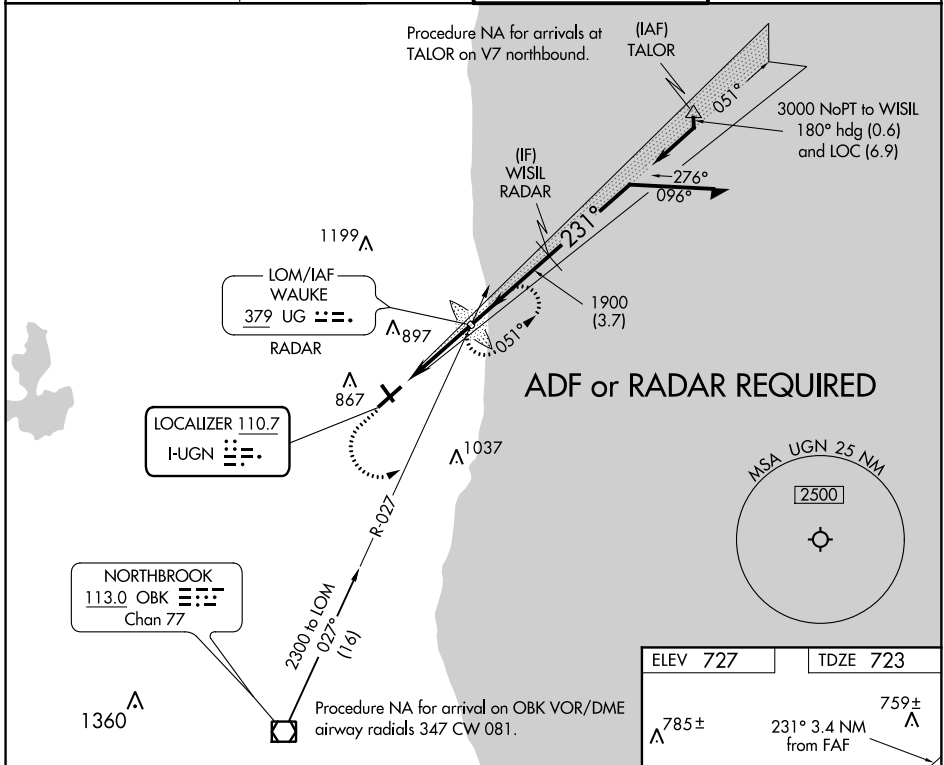
LOC I-UGN <b>110.7</b>	APP CRS <b>231°</b>	Rwy Idg TDZE Apt Elev	<b>5999</b> <b>723</b> <b>727</b>
---------------------------	------------------------	-----------------------------	---

# ILS or LOC RWY 23

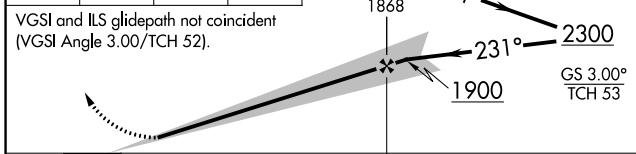
WAUKEGAN NATIONAL (UGN)

<p>Circling to Rwy 14, 32 NA at night. ADF or RADAR required.</p>	<p>MALS</p>	<p>MISSED APPROACH: Climb to 1600 then climbing left turn to 2300 to intercept OBK VOR/DME R-027 to WAUKE LOM/RADAR and hold.</p>
---	-------------	---

<p>ATIS <b>132.4</b></p>	<p>CHICAGO APP CON <b>120.55</b></p>	<p>WAUKEGAN TOWER ★ <b>120.05 (CTAF) 273.55</b></p>	<p>GND CON <b>121.65</b></p>
------------------------------	--	---	----------------------------------



1600 ↑	2300 ↶	OBK R-027	UG	WAUKE LOM/RADAR	Remain within 10 NM
--------	--------	-----------	----	-----------------	---------------------



CATEGORY	A	B	C	D
S-ILS 23		923-1/2	200 (200-1/2)	
S-LOC 23		1040-1/2	317 (400-1/2)	
CIRCLING	1220-1	493 (500-1)	1220-1 1/2 493 (500-1 1/2)	1400-2 1/4 673 (700-2 1/4)

ELEV 727	TDZE 723
----------	----------

785±

231° 3.4 NM from FAF

759± A

001 2730 X-75

5999 Y-150

015 32

TWR

757±

HIRL Rwy 5-23

MIRL Rwy 14-32

FAF to MAP 3.4 NM					
Knots	60	90	120	150	180
Min:Sec	3:24	2:16	1:42	1:21	1:08

EC-3, 07 NOV 2019 to 05 DEC 2019


EC-3, 07 NOV 2019 to 05 DEC 2019

WAAS CH <b>86211</b> <b>W23A</b>	APP CRS <b>232°</b>	Rwy Idg <b>5999</b> TDZE <b>723</b> Apt Elev <b>727</b>
--	------------------------	---

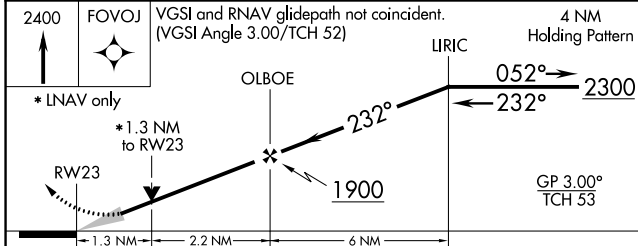
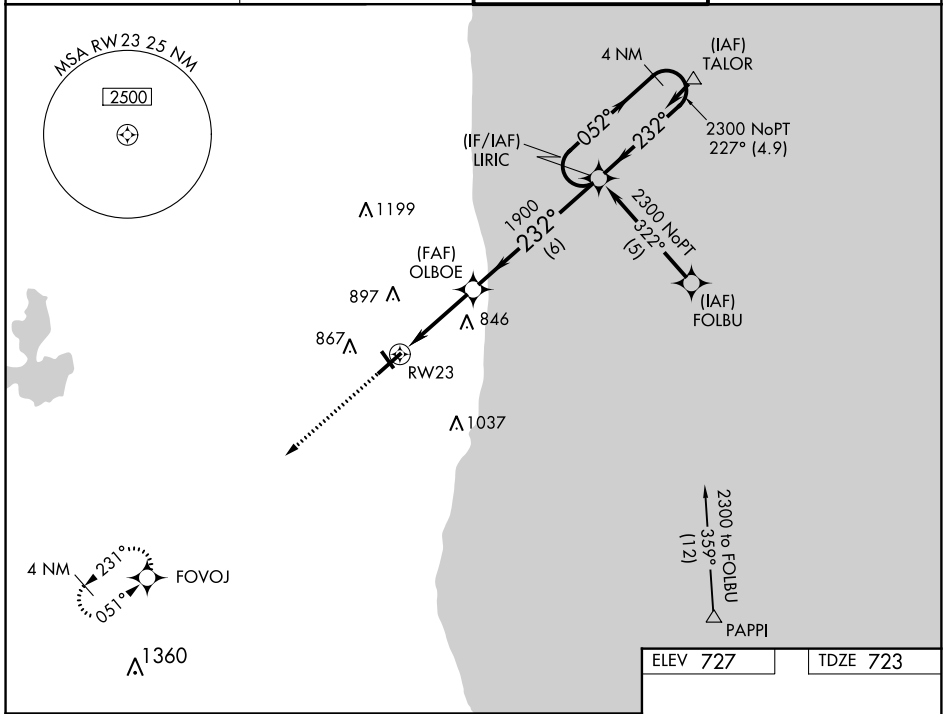
# RNAV (GPS) RWY 23

WAUKEGAN NATIONAL (UGN)

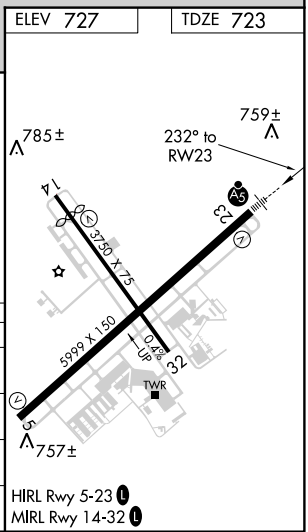
**⚠** Circling to Rwy 14, 32 NA at night. For uncompensated Baro-VNAV systems, LNAV/VNAV NA below -16° C (4° F) or above 54° C (130° F). DME/DME RNP-0.3 NA. For inoperative ALS, increase LNAV/VNAV all Cats visibility to ½ SM.

**MALSR**  MISSED APPROACH: Climb to 2400 direct FOVOJ and hold.

ATIS <b>132.4</b>	CHICAGO APP CON <b>120.55</b>	WAUKEGAN TOWER ★ <b>120.05 (CTAF) 0 273.55</b>	GND CON <b>121.65</b>
----------------------	----------------------------------	---	--------------------------



CATEGORY	A	B	C	D
LPV DA	980-½ 257 (300-½)			
LNAV/VNAV DA	1020-½ 297 (300-½)		1020-¾ 297 (300-¾)	
LNAV MDA	1160-½ 437 (500-½)	1160-¾ 437 (500-¾)	1160-1 437 (500-1)	1160-1 437 (500-1)
<b>CIRCLING</b>	1220-1 493 (500-1)	1220-1½ 493 (500-1½)	1400-2¼ 673 (700-2¼)	1400-2¼ 673 (700-2¼)



EC-3, 07 NOV 2019 to 05 DEC 2019

EC-3, 07 NOV 2019 to 05 DEC 2019

WAAS CH <b>81812</b> <b>W05A</b>	APP CRS <b>051°</b>	Rwy Idg <b>5999</b> TDZE <b>725</b> Apt Elev <b>727</b>
--	------------------------	---

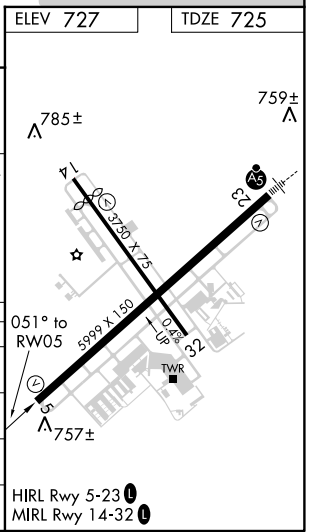
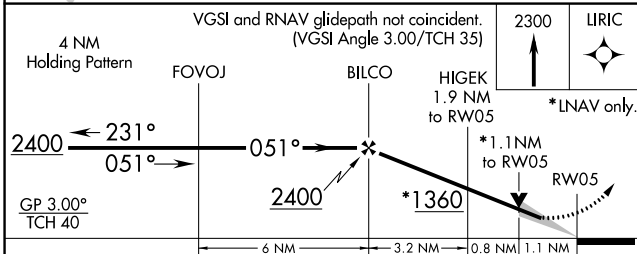
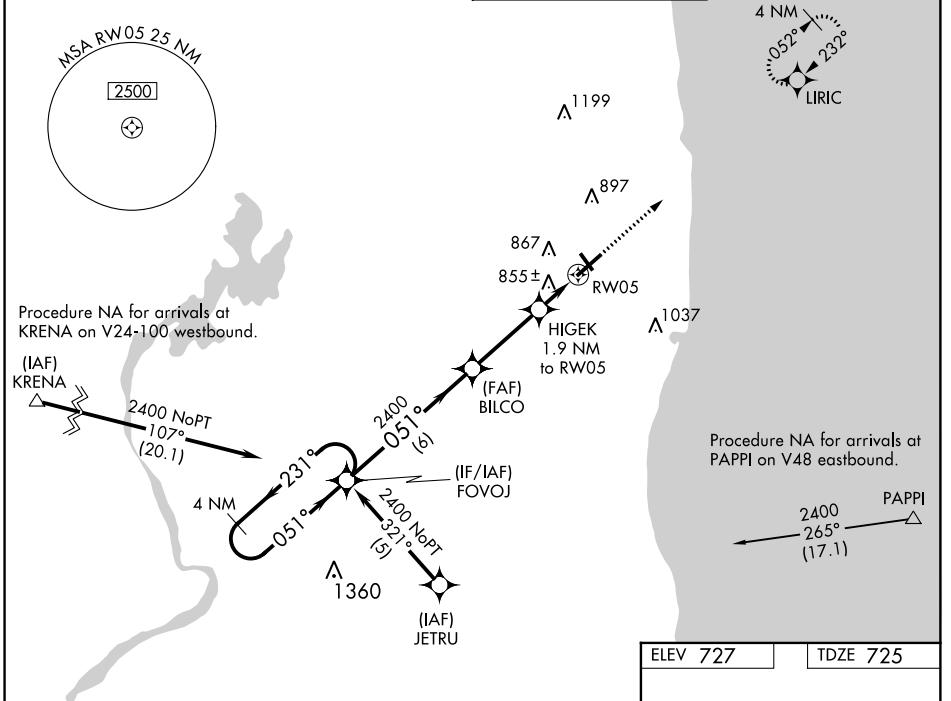
# RNAV (GPS) RWY 5

WAUKEGAN NATIONAL (UGN)

**⚠** For uncompensated Baro-VNAV systems, LNAV/VNAV NA below -16°C (4°F) or above 54°C (130°F). DME/DME RNP-0.3 NA.  
**⚠** Circling to Rwy 14/32 NA at night.

MISSED APPROACH: Climb to 2300 direct LIRIC and hold.

ATIS <b>132.4</b>	CHICAGO APP CON <b>120.55</b>	WAUKEGAN TOWER ★ <b>120.05 (CTAF) 0 273.55</b>	GND CON <b>121.65</b>
----------------------	----------------------------------	---	--------------------------



CATEGORY	A	B	C	D
LPV DA	990-1 265 (300-1)			
LNAV/VNAV DA	1140-1½ 415 (500-1½)			
LNAV MDA	1120-1 395 (400-1)	1120-1⅛ 395 (400-1⅛)	1120-1¼ 395 (400-1¼)	
CIRCLING	1220-1 493 (500-1)	1220-1½ 493 (500-1½)	1400-2¼ 673 (700-2¼)	

EC-3, 07 NOV 2019 to 05 DEC 2019

EC-3, 07 NOV 2019 to 05 DEC 2019