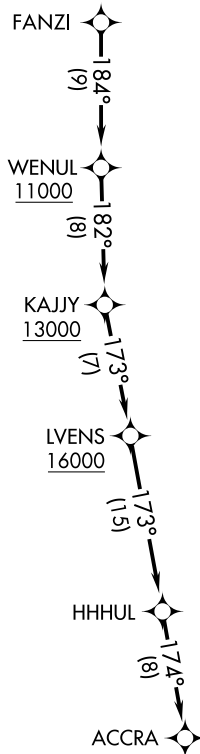


ATIS
118.875
CLNC DEL
121.6
MILWAUKEE CLNC DEL
128.7 (when twr closed)
GND CON
121.6
MILWAUKEE DEP CON
125.35 307.0



**TOP ALTITUDE:
ASSIGNED BY ATC**



TAKEOFF MINIMUMS

Rwys 18, 28, 36: Standard.
Rwy 10: 400-2½ or standard with minimum
climb of 316' per NM to 1400.

- NOTE: RNAV 1.
- NOTE: GPS or DME/DME/IRU required.
- NOTE: RADAR required.
- NOTE: Turbojet aircraft maintain 250K until advised by ATC.
- NOTE: Advise ATC if unable to comply with crossing restrictions.

NOTE: Chart not to scale.



DEPARTURE ROUTE DESCRIPTION

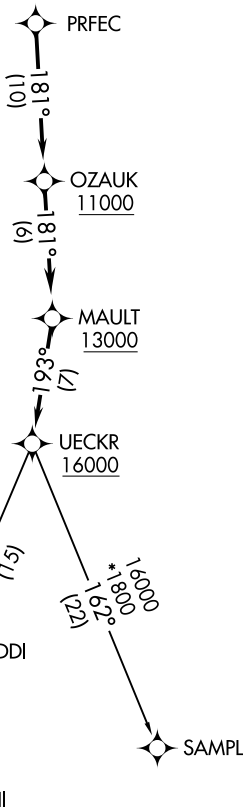
Climb on assigned heading for RADAR vectors to FANZI, thence....

....on track 184° to cross WENUL at or above 11000, then on track 182° to cross KAJJY at or above 13000, then on track 173° to cross LVENS at or above 16000, then on track 173° to HHHUL, then on track 174° to ACCRA. Maintain ATC assigned altitude, expect filed altitude ten minutes after departure.

ATIS
 118.875
 CLNC DEL
 121.6
 MILWAUKEE CLNC DEL
 128.7 (when twr closed)
 GND CON
 121.6
 MILWAUKEE DEP CON
 125.35 307.0



**TOP ALTITUDE:
ASSIGNED BY ATC**



TAKEOFF MINIMUMS

Rwy 18, 28, 36: Standard.
 Rwy 10: 400-2½ or standard with minimum climb of 316' per NM to 1400.

- NOTE: RNAV 1.
- NOTE: GPS or DME/DME/IRU required.
- NOTE: RADAR required.
- NOTE: Turbojet aircraft maintain 250K until advised by ATC.
- NOTE: Notify ATC if unable to comply with crossing restrictions.

NOTE: Chart not to scale.

DEPARTURE ROUTE DESCRIPTION

Climb on assigned heading for RADAR vectors to PRFEC, thence...

...on track 181° to cross OZAUK at or above 11000, then on track 181° to cross MAULT at or above 13000, then on track 193° to cross UECKR at or above 16000, then on (transition). Maintain ATC assigned altitude, expect filed altitude ten minutes after departure.

DELHI TRANSITION (UECKR6.DELHI)

SAMPL TRANSITION (UECKR6.SAMPL)