

WAAS CH 45605 W23A	APP CRS 229°	Rwy Idg TDZE Apt Elev	3995 1027 1070
--	------------------------	-----------------------------	---

RNAV (GPS) RWY 23

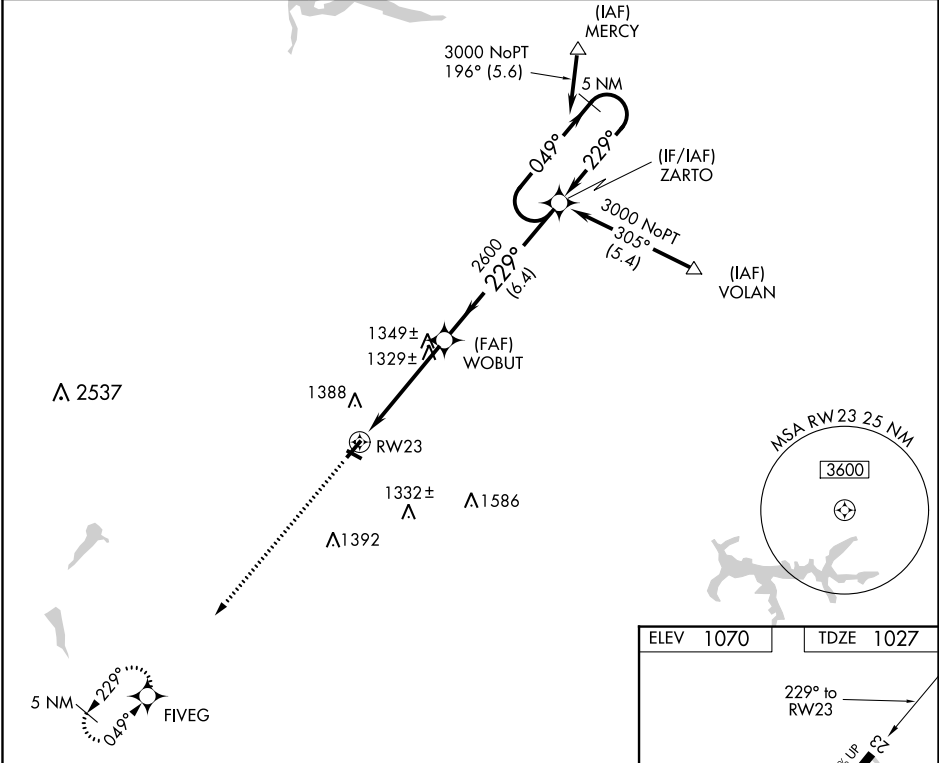
NEW CASTLE MUNI (UCP)

RNP APCH.

▽ VDP NA when using Youngstown-Warren Rgnl altimeter setting. When local altimeter setting not received, use Youngstown-Warren Rgnl altimeter setting and increase all DA 61 feet and all MDA 80 feet; increase LNAV Cat C and Circling Cat C visibility ¼ SM.

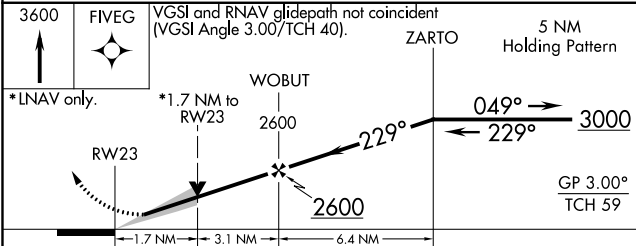
MISSED APPROACH:
Climb to 3600 direct
FIVEG and hold.

AWOS-3PT 124.175	YNG ASOS 123.75	YOUNGSTOWN APP CON ★ 133.95 322.3	UNICOM 123.0 (CTAF) ①
----------------------------	---------------------------	---	--

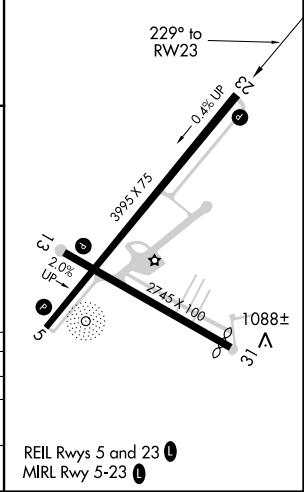


NE-4, 08 OCT 2020 to 05 NOV 2020

NE-4, 08 OCT 2020 to 05 NOV 2020



ELEV 1070	TDZE 1027
-----------	-----------



CATEGORY	A	B	C	D
LPV DA	1288-1 261 (300-1)			NA
LNAV MDA	1580-1	553 (600-1)	1580-1½ 553 (600-1½)	NA
CIRCLING	1580-1 510 (600-1)	1700-1 630 (700-1)	1700-1¾ 630 (700-1¾)	NA

WAAS CH 78005 W05A	APP CRS 049°	Rwy Idg TDZE 1027 Apt Elev 1070	3995
--	------------------------	---	-------------

RNAV (GPS) RWY 5

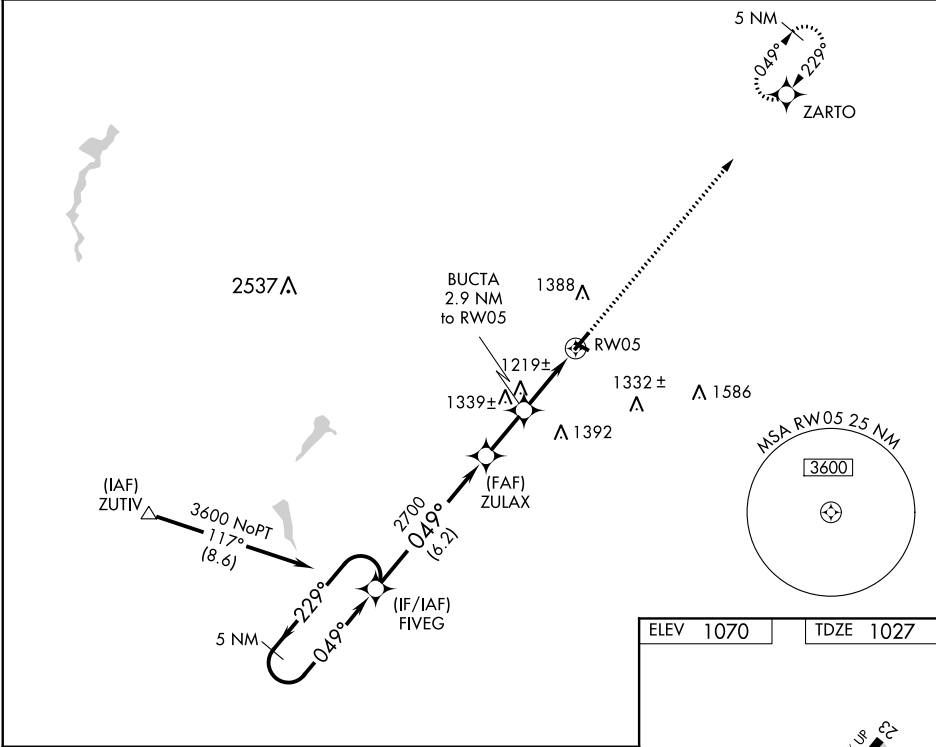
NEW CASTLE MUNI (UCP)

RNP APCH

▼ VDP NA when using Youngstown-Warren Rgnl altimeter setting. Rwy 5 helicopter visibility reduction below 3/4 SM NA. When local altimeter setting not received, use Youngstown-Warren Rgnl altimeter setting and increase all DA 61 feet and all MDA 80 feet; increase LNAV Cat C and Circling Cat C visibility 1/4 SM.

MISSED APPROACH:
Climb to 3000 direct ZARTO and hold.

AWOS-3PT 124.175	YNG ASOS 123.75	YOUNGSTOWN APP CON ★ 133.95 322.3	UNICOM 123.0 (CTAF) 0
----------------------------	---------------------------	---	---------------------------------



NE-4, 08 OCT 2020 to 05 NOV 2020

NE-4, 08 OCT 2020 to 05 NOV 2020

5 NM Holding Pattern		VGSI and RNAV glidepath not coincident (VGSI Angle 3.00/TCH 45).		3000	ZARTO
3600 ← 229°		→ 049°		↑	✧
GP 3.00° TCH 53		*2000		*LNAV only.	
6.2 NM		2.1 NM		1.6 NM	
1.3 NM		1.3 NM		1.3 NM	
CATEGORY	A	B	C	D	
LPV DA	1307-1		280 (300-1)	NA	
LNAV MDA	1480-1	453 (500-1)	1480-1 3/8 453 (500-1 3/8)	NA	
CIRCLING	1580-1 510 (600-1)	1700-1 630 (700-1)	1700-1 3/4 630 (700-1 3/4)	NA	

