

LOC/DME I-UAO <b>111.15</b> Chan <b>48(Y)</b>	APP CRS <b>172°</b>	Rwy Idg <b>5003</b> TDZE <b>200</b> Apt Elev <b>200</b>
---	------------------------	---

## LOC RWY 17

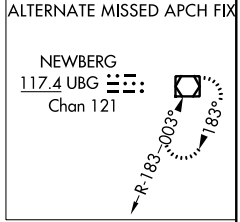
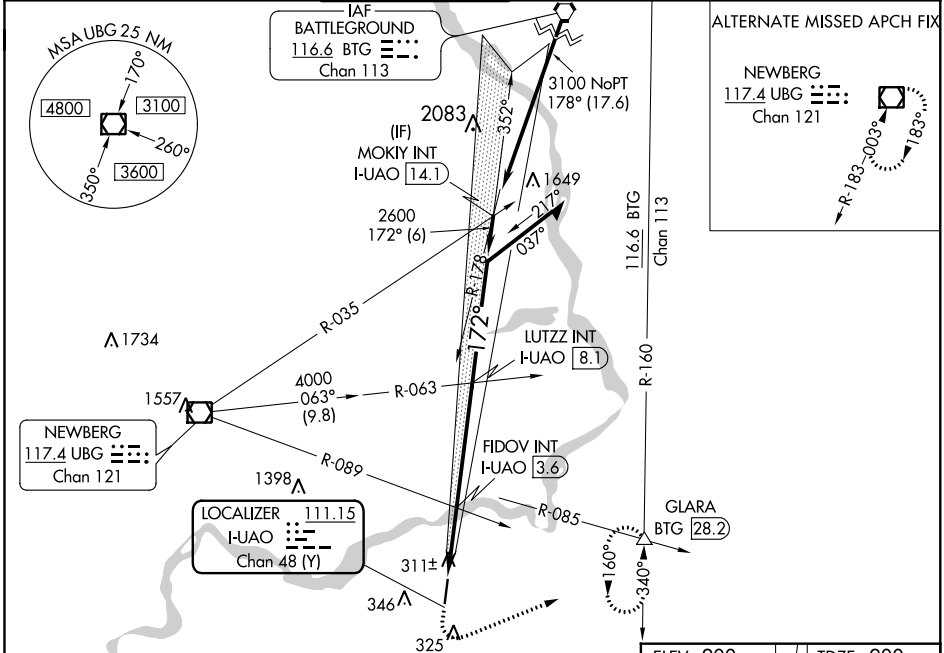
AURORA STATE (UAO)

**▼** Rwy 17 helicopter visibility reduction below 3/4 SM NA.  
**▲** FIDOV fix minimums: Inop table does not apply to Cats C/D.  
 For inop ALS, increase S-17 Cats C/D visibility to 2 1/2 SM.

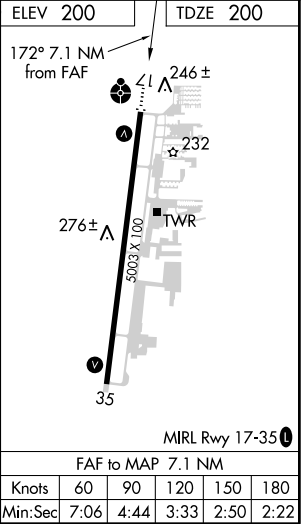
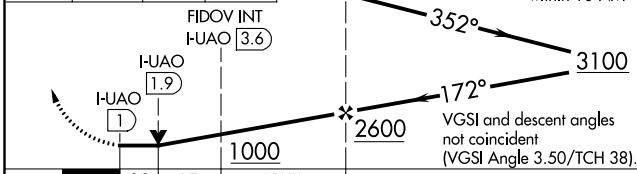


**ODALS** MISSED APPROACH: Climb to 900 then climbing left turn to 4000 on heading 050° and BTG R-160 to GLARA INT/BTG 28.2 DME and hold, continue climb-in-hold to 4000.

ATIS ★ <b>118.525</b>	PORTLAND APP CON <b>126.0 269.175</b>	AURORA TOWER ★ <b>120.35 (CTAF) 0</b>	GND CON <b>119.15</b>	CLNC DEL <b>119.15</b>	PORTLAND CLNC DEL <b>119.95</b> (When tower closed)
--------------------------	--	--	--------------------------	---------------------------	---



900 4000 hdg 050°	BTG R-160	GLARA	LUTZZ INT I-UAO 8.1 Remain within 10 NM
-------------------------	-----------	-------	--



CATEGORY	A	B	C	D
S-17	1000-3/4 800 (800-3/4)	1000-1 800 (800-1)	1000-2	800 (800-2)
<b>CIRCLING</b>	1000-1 800 (800-1)	1000-1 1/4 800 (800-1 1/4)	1000-2 1/2	800 (800-2 1/2)
FIDOV FIX MINIMUMS				
S-17	580-3/4	380 (400-3/4)	580-1	380 (400-1)
<b>CIRCLING</b>	640-1 440 (500-1)	660-1 460 (500-1)	660-1 1/2 460 (500-1 1/2)	940-2 1/4 740 (800-2 1/4)

NW-1, 29 MAR 2018 to 26 APR 2018


NW-1, 29 MAR 2018 to 26 APR 2018

WAAS CH <b>70308</b> <b>W17A</b>	APP CRS <b>172°</b>	Rwy Idg <b>5003</b> TDZE <b>200</b> Apt Elev <b>200</b>
--	------------------------	---

# RNAV (GPS) RWY 17

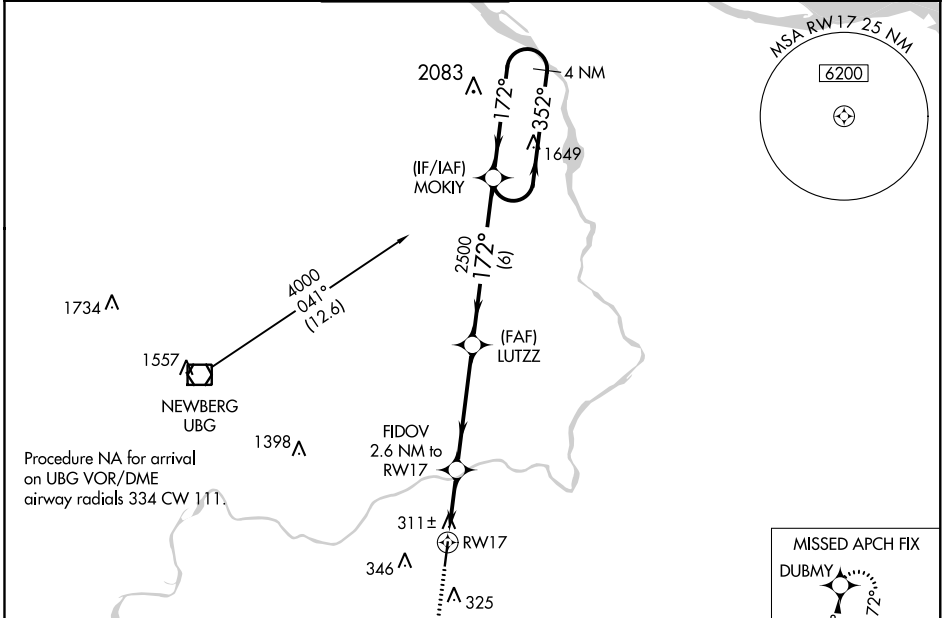
AURORA STATE (UAO)

**⚠** For uncompensated Baro-VNAV systems, LNAV/VNAV NA below -6°C (22°F) or above 54°C (130°F). Rwy 17 helicopter reduction visibility below 3/4 SM NA. DME/DME RNP-0.3 NA. Inop table does not apply to LNAV Cats C/D. For Inop ALS, increase LPV all Cats visibility to 1 SM and increase LNAV/VNAV all Cats visibility to 3/8 SM.

**ODALS** 

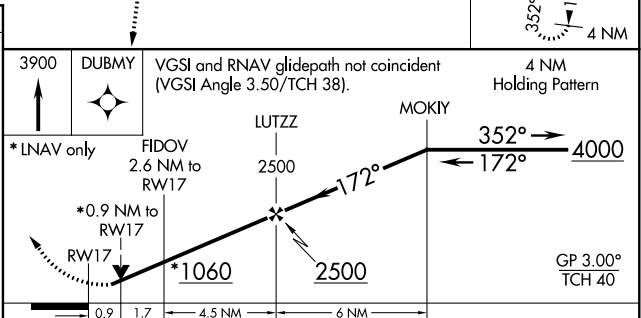
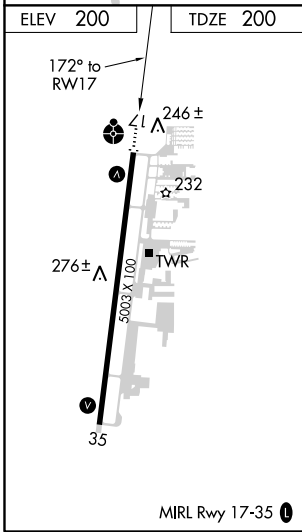
**MISSED APPROACH:**  
Climb to 3900 direct DUBMY and hold, continue climb-in-hold to 3900.


<b>ATIS</b> ★ <b>118.525</b>	<b>PORTLAND APP CON</b> <b>126.0 269.175</b>	<b>AURORA TOWER</b> ★ <b>120.35 (CTAF)</b> 	<b>GND CON</b> <b>119.15</b>	<b>CLNC DEL</b> <b>119.15</b>	<b>PORTLAND CLNC DEL</b> <b>119.95</b> (When tower closed)
---------------------------------	---	---	---------------------------------	----------------------------------	--



NW-1, 29 MAR 2018 to 26 APR 2018

NW-1, 29 MAR 2018 to 26 APR 2018



CATEGORY	A	B	C	D
LPV DA		511-7/8	311 (400-7/8)	
LNAV/VNAV DA		472-3/4	272 (300-3/4)	
LNAV MDA	580-3/4	380 (400-3/4)	580-1	380 (400-1)
 CIRCLING	640-1 440 (500-1)	660-1 460 (500-1)	660-1 1/2 460 (500-1 1/2)	940-2 1/4 740 (800-2 1/4)

# RNAV (GPS) RWY 35

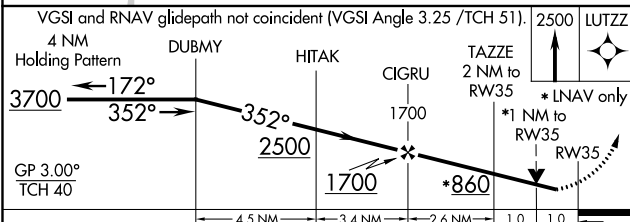
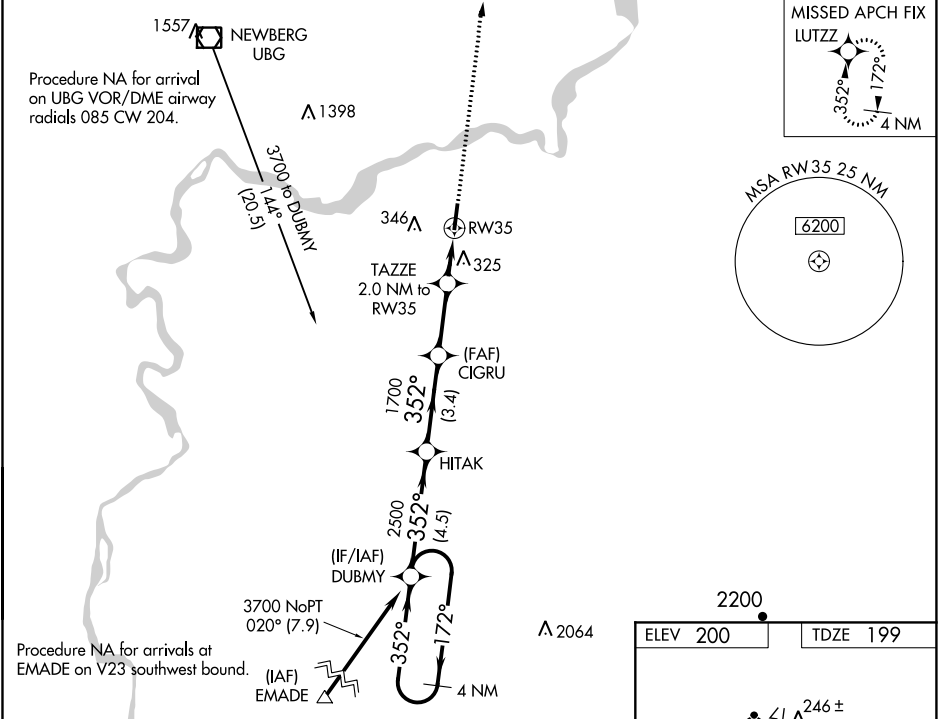
AURORA STATE (UAO)

WAAS CH <b>77508</b> <b>W35A</b>	APP CRS <b>352°</b>	Rwy Idg <b>5003</b> TDZE <b>199</b> Apt Elev <b>200</b>
--	------------------------	---

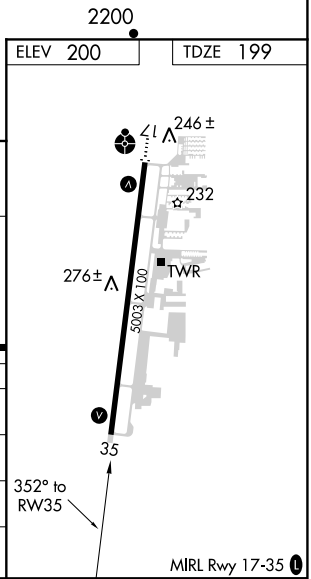
**⚠** For uncompensated Baro-VNAV systems, LNAV/VNAV NA below -6°C (22°F) or above 54°C (130°F). Rwy 35 helicopter visibility reduction below ¾ SM NA. DME/DME RNP-0.3 NA.

**MISSED APPROACH:** Climb to 2500 direct LUTZZ and hold.

ATIS ★ <b>118.525</b>	PORTLAND APP CON <b>126.0 269.175</b>	AURORA TOWER ★ <b>120.35 (CTAF) 0</b>	GND CON <b>119.15</b>	CLNC DEL <b>119.15</b>	PORTLAND CLNC DEL <b>119.95</b> (When tower closed)
--------------------------	--	--	--------------------------	---------------------------	---



CATEGORY	A	B	C	D
LPV DA	452-7/8		253 (300-7/8)	
LNAV/VNAV DA	480-1		281 (300-1)	
LNAV MDA	580-1	381 (400-1)	580-1 1/8	381 (400-1 1/8)
<b>C</b> CIRCLING	640-1 440 (500-1)	660-1 460 (500-1)	660-1 1/2 460 (500-1 1/2)	940-2 1/4 740 (800-2 1/4)



NW-1, 29 MAR 2018 to 26 APR 2018

NW-1, 29 MAR 2018 to 26 APR 2018