

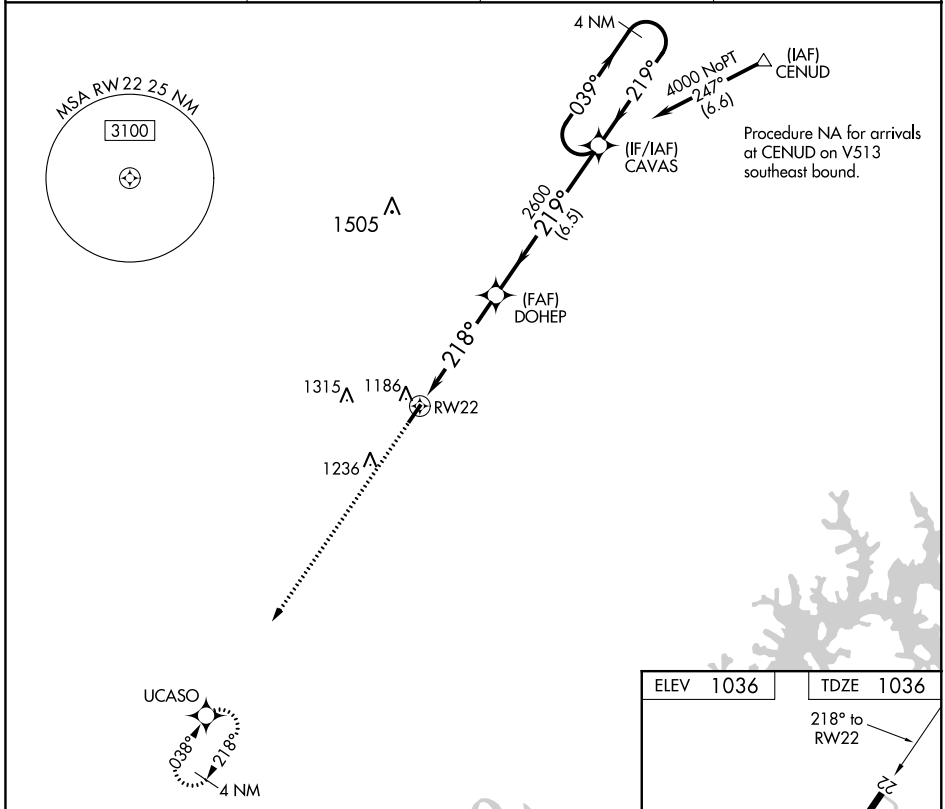
WAAS CH 58031 W22A	APP CRS 218°	Rwy Idg TDZE Apt Elev	4000 1036 1036
--	------------------------	-----------------------------	---

RNAV (GPS) RWY 22

TOMPKINSVILLE-MONROE COUNTY (T'ZV)

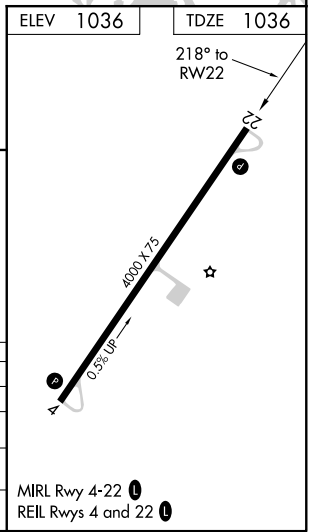
NA Baro-VNAV NA. DME/DME RNP-0.3 NA. Helicopter visibility reduction below ¼ SM NA. Use Glasgow altimeter setting. Night landing: Rwy 4 NA. MISSED APPROACH: Climb to 4000 direct to UCASO and hold.

AWOS-AV 123.050	GLW AWOS-3 118.525	MEMPHIS CENTER 132.9 263.1	UNICOM 123.05 (CTAF) 0
---------------------------	------------------------------	--------------------------------------	----------------------------------



SE-1, 10 OCT 2019 to 07 NOV 2019

SE-1, 10 OCT 2019 to 07 NOV 2019



4000	UCASO	*LNAV only.	CAVAS	4 NM Holding Pattern
↑	✧			
		*1.7 NM to RWY 22	DOHEP 2600	GP 3.00° TCH 30
		1.7	3.1 NM	6.5 NM
CATEGORY	A	B	C	D
LPV DA		1385-1¼	349 (400-1¼)	NA
LNAV/VNAV DA		1593-2	557 (600-2)	NA
LNAV MDA	1620-1	584 (600-1)	1620-1¾ 584 (600-1¾)	NA
C CIRCLING	1640-1 604 (700-1)	1800-1 764 (800-1)	1840-2¼ 804 (900-2¼)	NA

MIRL Rwy 4-22 0
REIL Rwy 4 and 22 0

RNAV (GPS) RWY 4

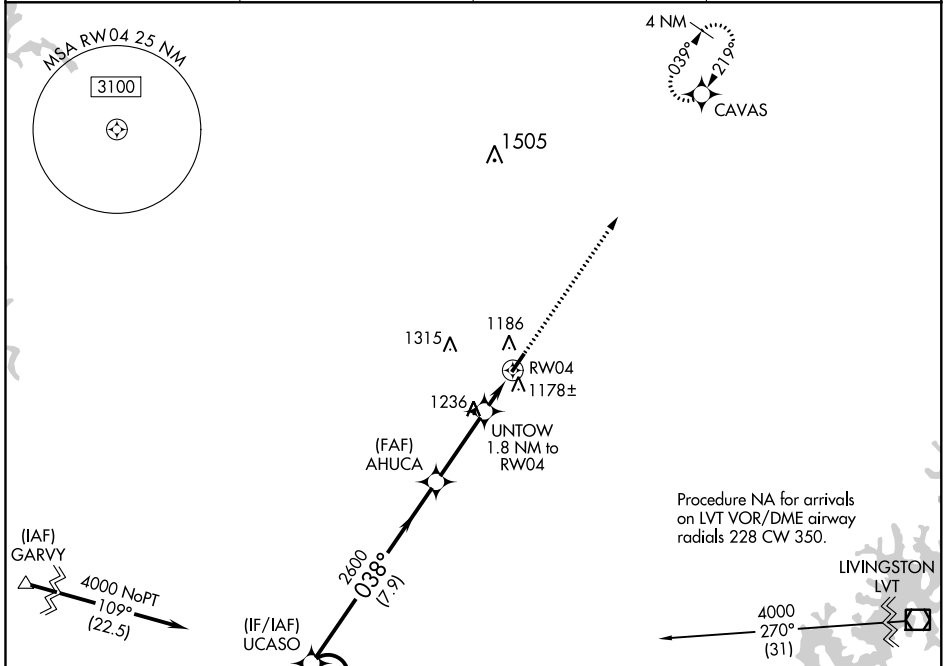
TOMPKINSVILLE-MONROE COUNTY (T'ZV)

APP CRS 038°	Rwy Idg 4000
	TDZE 1034
	Apt Elev 1036

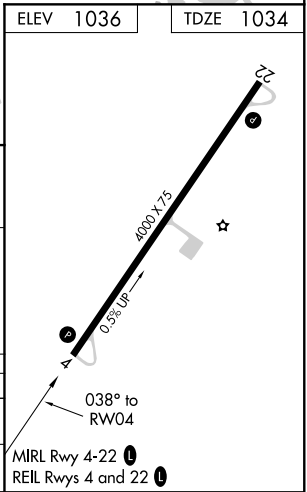
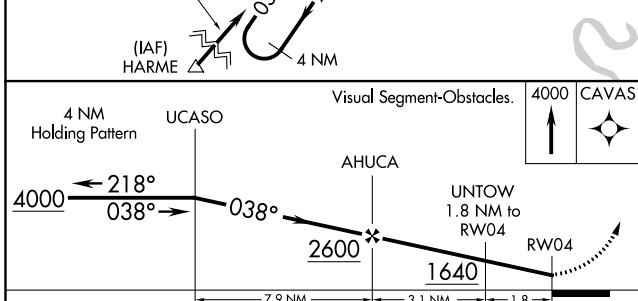
▽ DME/DME RNP-0.3 NA.
△ NA Helicopter visibility reduction below 1 SM NA.
 Night landing: Rwy 4 NA.
 Use Glasgow altimeter setting.

MISSED APPROACH: Climb to 4000 direct CAVAS and hold.

AWOS-AV 123.050	GLW AWOS-3 118.525	MEMPHIS CENTER 132.9 263.1	UNICOM 123.05 (CTAF) 0
---------------------------	------------------------------	--------------------------------------	----------------------------------



ELEV 1036	TDZE 1034
-----------	-----------



CATEGORY	A	B	C	D
LNVA MDA	1540-1	506 (600-1)	1540-1 3/8 506 (600-1 3/8)	NA
C CIRCLING	1640-1 604 (700-1)	1800-1 764 (800-1)	1840-2 1/4 804 (900-2 1/4)	NA

RNAV (GPS) RWY 4

SE-1, 10 OCT 2019 to 07 NOV 2019

SE-1, 10 OCT 2019 to 07 NOV 2019