

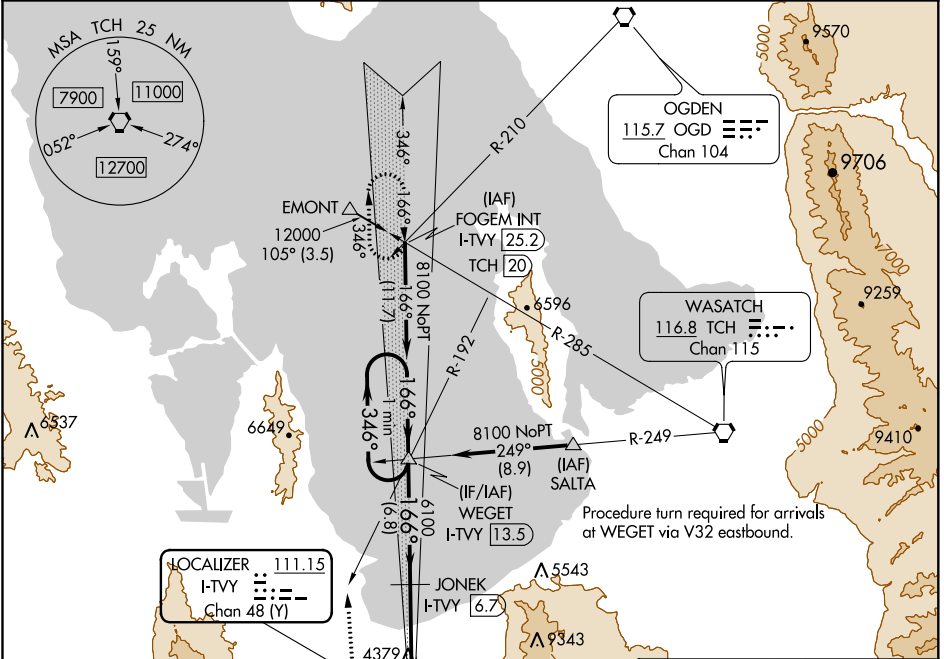
LOC/DME I-TVY 111.15 Chan 48 (Y)	APP CRS 166°	Rwy Idg TDZE Apt Elev 6100 4297 4322
---	------------------------	--

ILS or LOC RWY 17

BOLINDER FIELD-TOOELE VALLEY (TVY)

<p>D DME required. For inop ALS, increase S-LOC Cat C/D visibility to 1 SM.</p>	<p>MALSR </p>	<p>MISSED APPROACH: Climb to 5400 then climbing right turn to 8600 heading 343° and OGD VORTAC R-192 to WEGET INT/I-TVY 13.5 DME and I-TVY north course to FOGEM INT/I-TVY 25.2 DME and hold.</p>
--	-------------------	---

AWOS-3 119.725	SALT LAKE CITY APP CON 135.5 316.15	CLNC DEL 124.4	UNICOM 123.0 (CTAF)
--------------------------	---	--------------------------	-------------------------------

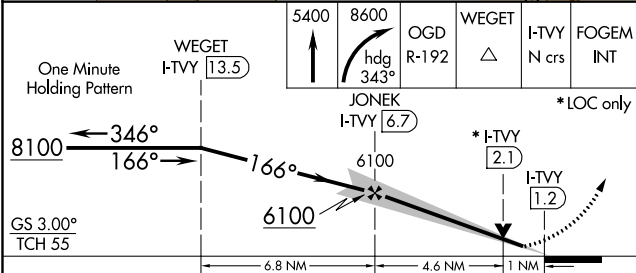


SW-4, 11 AUG 2022 to 08 SEP 2022

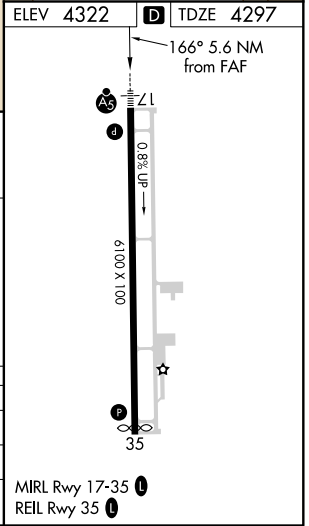
SW-4, 11 AUG 2022 to 08 SEP 2022

ELEV 4322	D TDZE 4297
-----------	--------------------

166° 5.6 NM from FAF




CATEGORY	A	B	C	D
S-ILS 17	4497-1/2		200 (200-1/2)	
S-LOC 17	4640-1/2	343 (400-1/2)	4640-5/8	343 (400-5/8)
C CIRCLING	4820-1 498 (500-1)	4900-1 578 (600-1)	5060-2 738 (800-2)	5380-3 1058 (1100-3)



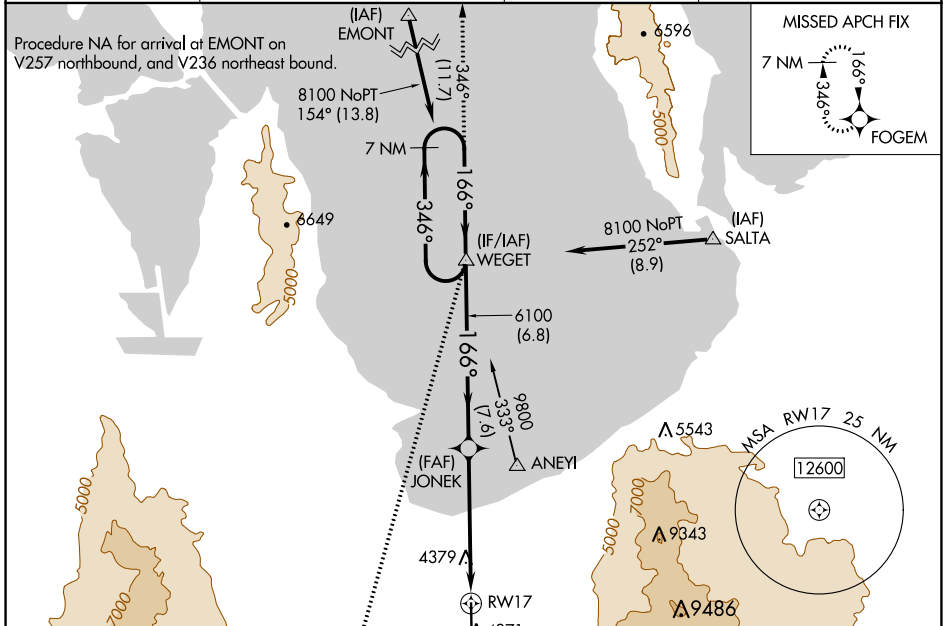
WAAS CH 73031 W17A	APP CRS 166°	Rwy ldg TDZE Apt Elev	6100 4297 4322
--	------------------------	-----------------------------	---

RNAV (GPS) RWY 17

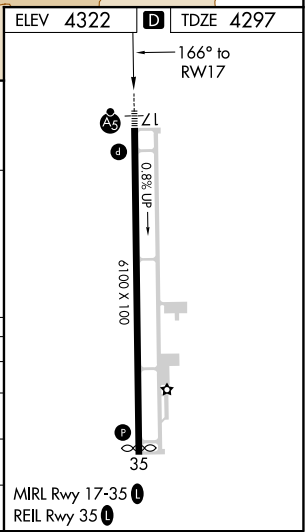
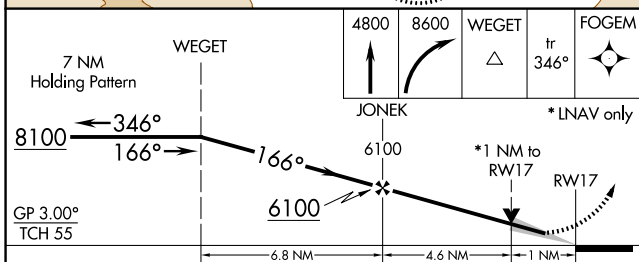
BOLINDER FIELD-TOOELE VALLEY (TVY)

<p>⚠ For uncompensated Baro-VNAV systems, LNAV/VNAV NA below -23°C (-9°F) or above 49°C (120°F). DME/DME RNP-0.3 NA. For inop ALS, increase LNAV/VNAV all Cats visibility to ¾ SM, increase LNAV Cat C/D visibility to 1 SM.</p>	<p>MALSR</p>  <p>MISSED APPROACH: Climb to 4800 then climbing right turn to 8600 direct WEGET and track 346° to FOGEM and hold.</p>
---	--

AWOS-3 119.725	SALT LAKE CITY APP CON 135.5 316.15	CLNC DEL 124.4	UNICOM 123.0 (CTAF) 0
--------------------------	---	--------------------------	---------------------------------



ELEV 4322	D TDZE 4297
-----------	--------------------



CATEGORY	A	B	C	D
LPV DA	4497-½		200 (200-½)	
LNAV/VNAV DA	4547-½		250 (300-½)	
LNAV MDA	4640-½ 343 (400-½)		4640-⅝ 343 (400-⅝)	
C CIRCLING	4820-1 498 (500-1)	4900-1 578 (600-1)	5060-2 738 (800-2)	5380-3 1058 (1100-3)

MIRL Rwy 17-35 **0**
REIL Rwy 35 **0**

SW-4, 11 AUG 2022 to 08 SEP 2022

SW-4, 11 AUG 2022 to 08 SEP 2022