


LOC I-TVR <b>109.7</b>	APP CRS <b>357°</b>	Rwy Idg <b>5002</b> TDZE <b>86</b> Apt Elev <b>86</b>
---------------------------	------------------------	---

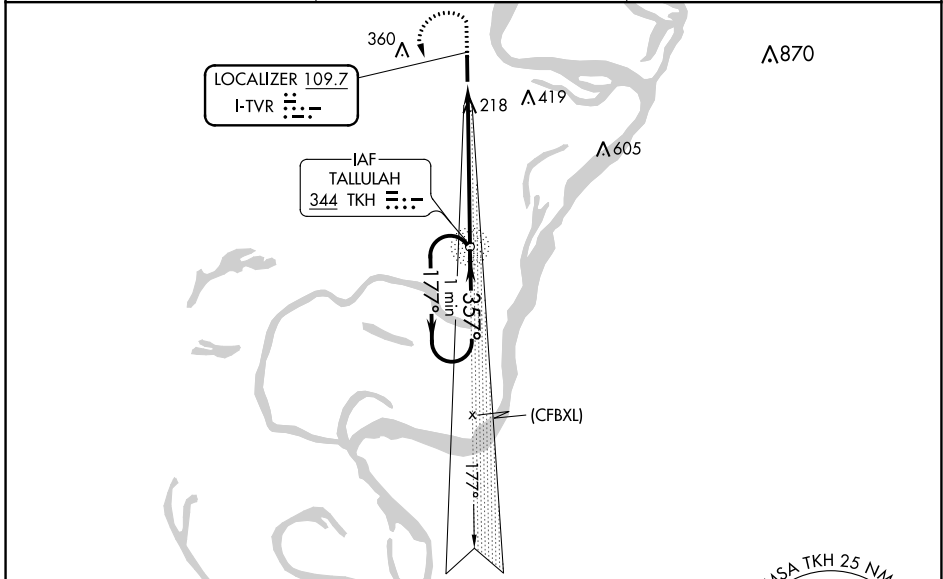
# ILS or LOC RWY 36

VICKSBURG TALLULAH RGNL (TVR)


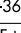
**ADF REQUIRED.** When local altimeter setting not received, use Vicksburg Muni, MS altimeter setting and increase S-ILS 36 DA to 309 feet; increase all MDA 40 feet and visibility Cats C and D ¼ mile.

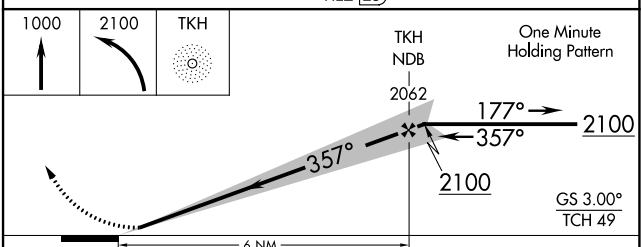
SSALR  MISSED APPROACH: Climb to 1000 then climbing left turn to 2100 direct TKH NDB and hold.

ASOS <b>118.525</b>	MEMPHIS CENTER <b>132.5 259.1</b>	UNICOM <b>123.0 (CTAF) 0</b>
------------------------	--------------------------------------	---------------------------------



## ADF REQUIRED

ELEV 86	<b>D</b>	TDZE 86			
REIL Rwy 18 	MIRL Rwy 18-36 	36 357° 6 NM from FAF			
FAF to MAP 6 NM					
Knots	60	90	120	150	180
Min:Sec	6:00	4:00	3:00	2:24	2:00



TKH NDB	2062	177°	2100	357°	2100
GS 3.00°					TCH 49
CATEGORY	A	B	C	D	
S-ILS 36	286-½		200 (200-½)		
S-LOC 36	540-½	454 (500-½)	540-⅞	454 (500-⅞)	
<b>C</b> CIRCLING	540-1	454 (500-1)	720-1¾ 634 (700-1¾)	720-2 634 (700-2)	

SC-4, 15 JUL 2021 to 12 AUG 2021

SC-4, 15 JUL 2021 to 12 AUG 2021

APP CRS	Rwy Idg	<b>5002</b>
<b>177°</b>	TDZE	<b>85</b>
	Apt Elev	<b>86</b>

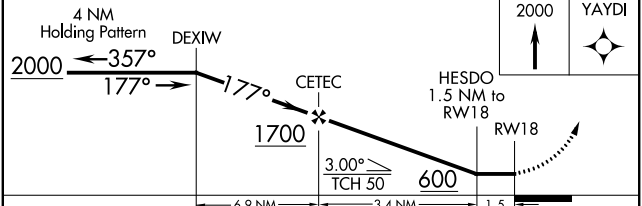
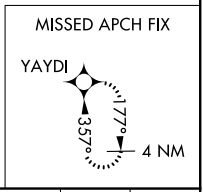
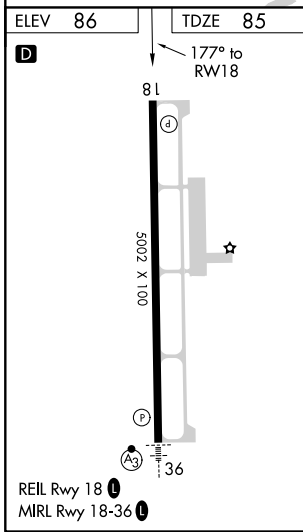
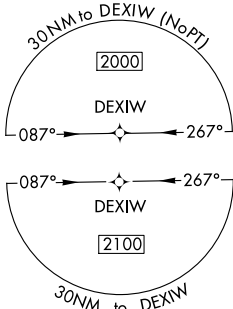
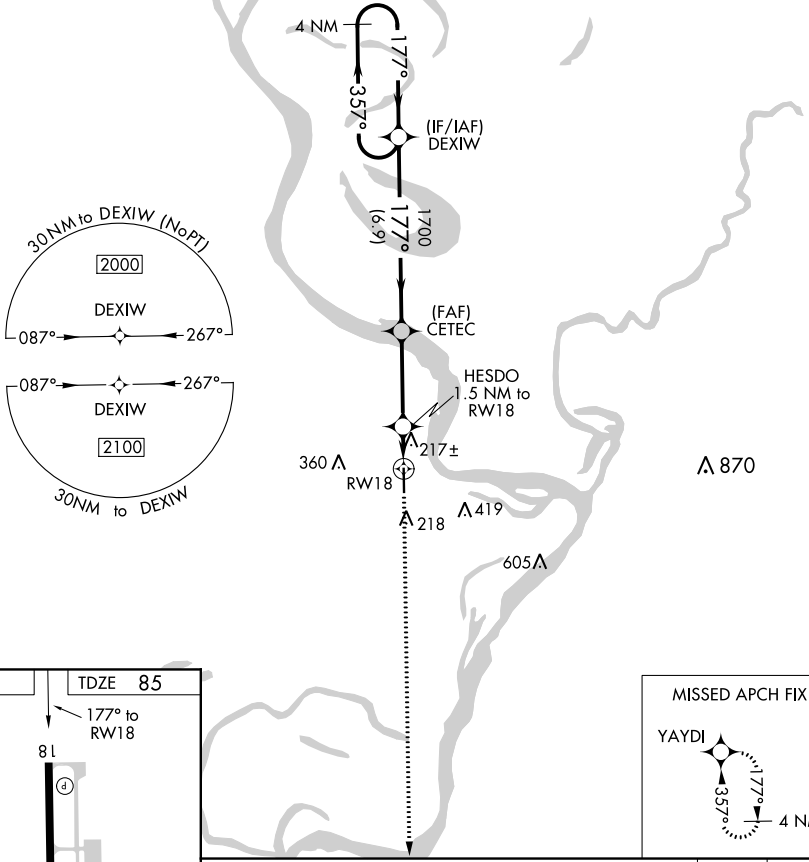
# RNAV (GPS) RWY 18

VICKSBURG TALLULAH RGNL (TVR)

**⚠** DME/DME RNP-0.3 NA. When local altimeter setting not received, use Vicksburg Muni, MS altimeter setting and increase all MDA 40 feet and visibility Cats C and D ¼ mile. Helicopter visibility reduction below ¼ SM NA.

**MISSED APPROACH:** Climb to 2000 direct YAYDI and hold.

ASOS <b>118.525</b>	MEMPHIS CENTER <b>132.5 259.1</b>	UNICOM <b>123.0 (CTAF) 0</b>
------------------------	--------------------------------------	---------------------------------



CATEGORY	A	B	C	D
LNAV MDA	480-1	395 (400-1)	480-1 1/8	395 (400-1 1/8)
<b>C</b> CIRCLING	540-1	454 (500-1)	720-1 3/4 634 (700-1 3/4)	720-2 634 (700-2)

SC-4, 15 JUL 2021 to 12 AUG 2021

SC-4, 15 JUL 2021 to 12 AUG 2021

WAAS Chan <b>99700</b> <b>W36A</b>	APP CRS <b>357°</b>	Rwy ldg <b>5002</b> TDZE <b>86</b> Apr Elev <b>86</b>
--	------------------------	---

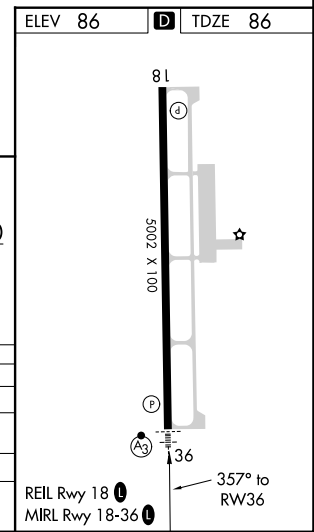
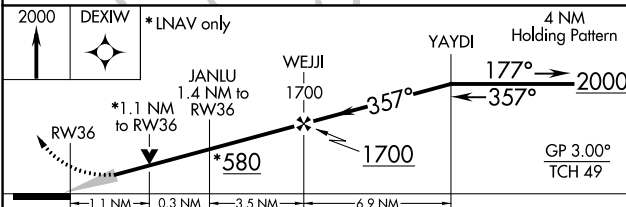
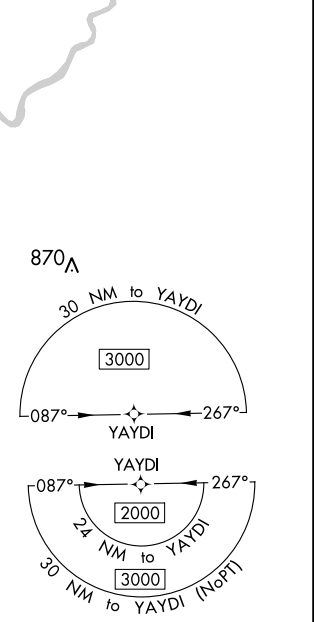
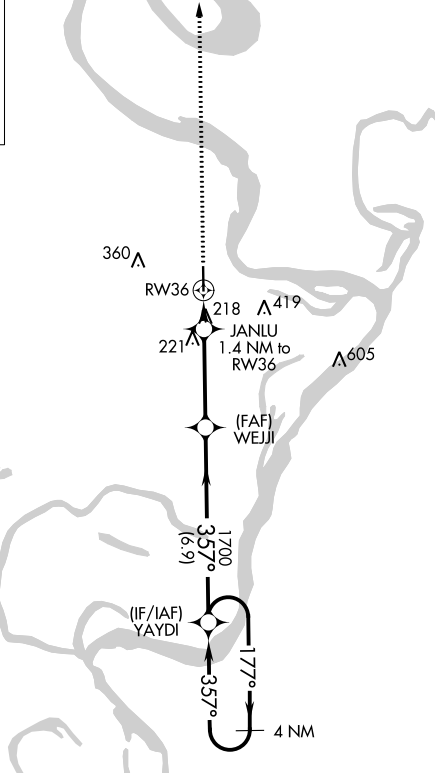
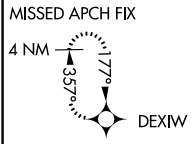
# RNAV (GPS) RWY 36

VICKSBURG TALLULAH RGNL (TVR)

**⚠** For uncompensated Baro-VNAV systems, LNAV/VNAV NA below -8°C (18°F) or above 54°C (130°F). DME/DME RNP-0.3 NA. When local altimeter setting not received, use Vicksburg Muni, MS altimeter setting and increase LPV DA to 309 feet, LNAV/VNAV DA to 516 feet all visibilities 1/8 mile; increase all MDA 40 feet and visibility Cats C/D 1/4 mile. Baro-VNAV and VDP NA with Vicksburg Muni, MS altimeter setting.

SSALR 	MISSED APPROACH: Climb to 2000 direct DEXIW and hold.
-----------	--

ASOS <b>118.525</b>	MEMPHIS CENTER <b>132.5 259.1</b>	UNICOM <b>123.0 (CTAF) 0</b>
------------------------	--------------------------------------	---------------------------------



CATEGORY	A	B	C	D
LPV DA		286-1/2	200 (200-1/2)	
LNAV/VNAV DA		493-7/8	407 (500-7/8)	
LNAV MDA	480-1/2	394 (400-1/2)	480-5/8	394 (400-3/8)
<b>C</b> CIRCLING	540-1	454 (500-1)	720-1 3/4 634 (700-1 3/4)	720-2 634 (700-2)

SC-4, 15 JUL 2021 to 12 AUG 2021

SC-4, 15 JUL 2021 to 12 AUG 2021