

# DINGO FIVE ARRIVAL

ST-430 (FAA)

TUCSON INTL (TUS)  
TUCSON, ARIZONA

TUCSON APP CON  
Rwy 11: 119.4 318.1  
Rwy 29: 125.1 269.55  
ATIS 123.8 279.65

PHOENIX  
115.6 PXR  
Chan 103  
N33°25.98'-W111°58.21'  
L-5, H-4

GILA BEND  
116.6 GBN  
Chan 113  
N32°57.38'-W112°40.46'  
L-5, H-4

STANFIELD  
114.8 TFD  
Chan 95  
N32°53.15'-W111°54.52'  
L-5, H-4

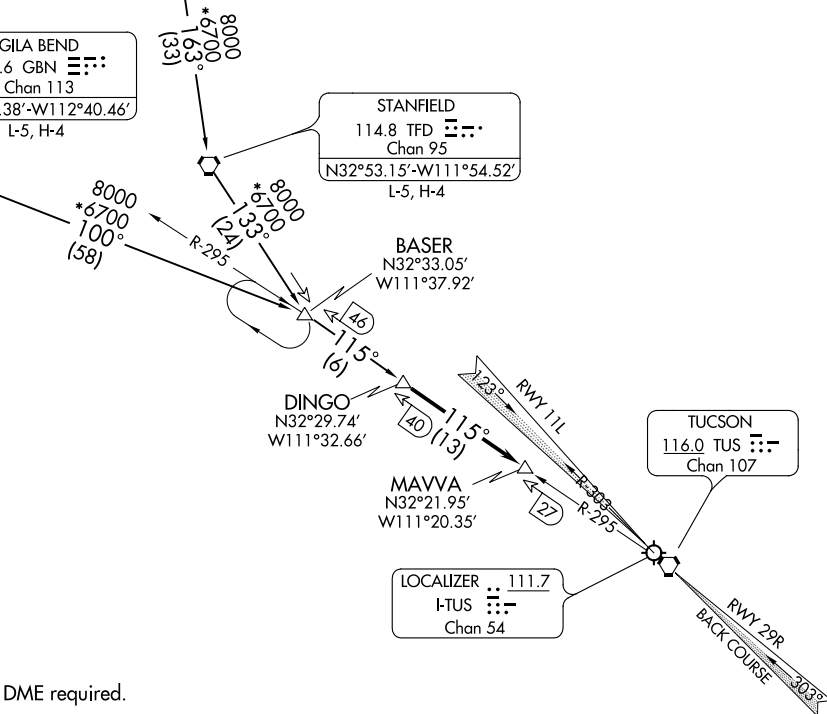
BASER  
N32°33.05'  
W111°37.92'

DINGO  
N32°29.74'  
W111°32.66'

MAVVA  
N32°21.95'  
W111°20.35'

LOCALIZER  
111.7  
I-TUS  
Chan 54

TUCSON  
116.0 TUS  
Chan 107



SW-4, 12 OCT 2017 to 09 NOV 2017

SW-4, 12 OCT 2017 to 09 NOV 2017

NOTE: DME required.

NOTE: Chart not to scale.

## ARRIVAL ROUTE DESCRIPTION

GILA BEND TRANSITION (GBN.DINGO5): From over GBN VORTAC via GBN R-100 to BASER INT, then via TUS R-295 to DINGO INT. Thence....

PHOENIX TRANSITION (PXR.DINGO5): From over PXR VORTAC via PXR R-163 to TFD VORTAC. Then via TFD R-133 to BASER INT. Then via TUS R-295 to DINGO INT. Thence....

STANFIELD TRANSITION (TFD.DINGO5): From over TFD VORTAC via TFD R-133 to BASER INT. Then via TUS R-295 to DINGO INT. Thence....

....From over DINGO INT via TUS R-295 to MAVVA INT. Thence, for Runway 11L via heading 075° to intercept I-TUS localizer or TUS VORTAC R-303, and expect approach clearance for Rwy 11L. For Runway 29R expect RADAR vectors to final approach course Runway 29R.

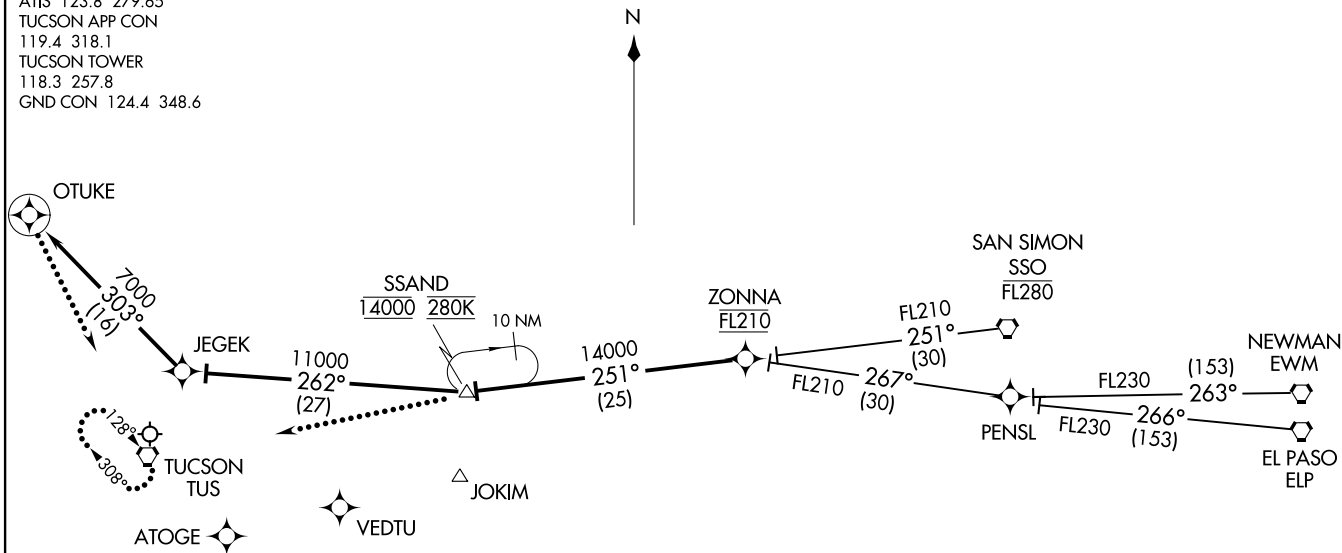
# DINGO FIVE ARRIVAL

(DINGO.DINGO5) 09JAN92

TUCSON, ARIZONA  
TUCSON INTL (TUS)

ZONNA ONE ARRIVAL (RNAV)  
 (ZONNA.ZONNA1) 30AUG07

ATIS 123.8 279.65  
 TUCSON APP CON  
 119.4 318.1  
 TUCSON TOWER  
 118.3 257.8  
 GND CON 124.4 348.6



ARRIVAL ROUTE DESCRIPTION

EL PASO TRANSITION (ELP.ZONNA1)  
NEWMAN TRANSITION (EWM.ZONNA1)  
SAN SIMON TRANSITION (SSO.ZONNA1)

From ZONNA via 251° track to SSAND, cross SSAND at 14000 and 280K, then via 262° track to JEGEK, then via 303° track to OTUKE. Expect radar vectors to final approach course.

LOST COMMUNICATIONS

RWY 29R: At SSAND proceed direct TUS VORTAC and hold, maintain 14000.  
 RWY 11L: Execute RNAV (GPS) Z RWY 11L approach. If unable, at OTUKE proceed direct TUS VORTAC and hold, maintain 14000.

- NOTE: RADAR required.
- NOTE: All Rwy's: expect radar vectors to final approach.
- NOTE: RNAV 1.
- NOTE: DME/DME/IRU, or GPS required.
- NOTE: For turbojets only.
- NOTE: All transitions: for non-GPS equipped aircraft DUG, TFD, and TUS must be operational.
- NOTE: Landing Rwy 29: Expect radar vectors after SSAND to final approach course.

NOTE: Chart not to scale.

TUCSON, ARIZONA  
 TUCSON INTL (TUS)

(ZONNA.ZONNA1) 16259  
 ZONNA ONE ARRIVAL (RNAV)  
 ST-430 (FAA)

TUCSON INTL (TUS)  
 TUCSON, ARIZONA