

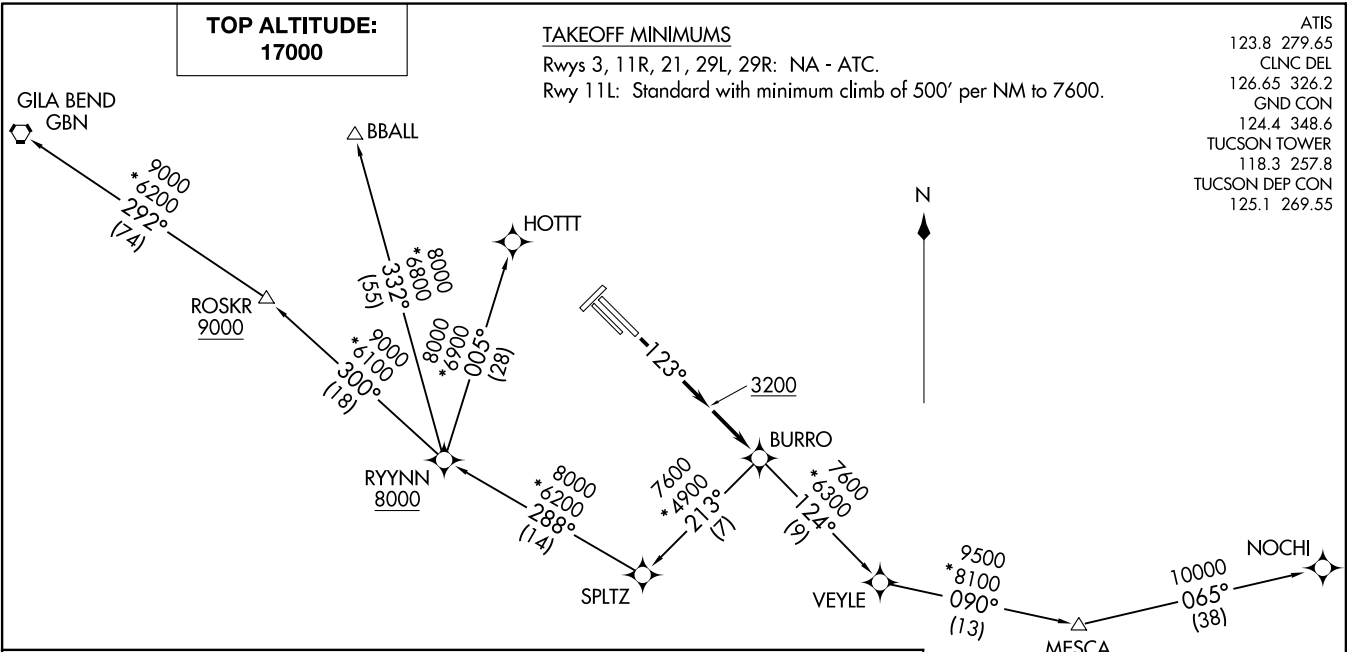
(BURRO4.BURRO) 1831Z
BURRO FOUR DEPARTURE (RNAV)
AL-430 (FAA)
TUCSON INTL (TUTS)
TUCSON, ARIZONA

ATIS
123.8 279.65
CLNC DEL
126.65 326.2
GND CON
124.4 348.6
TUCSON TOWER
118.3 257.8
TUCSON DEP CON
125.1 269.55

TAKEOFF MINIMUMS

Rwys 3, 11R, 21, 29L, 29R: NA - ATC.
Rwy 11L: Standard with minimum climb of 500' per NM to 7600.

**TOP ALTITUDE:
17000**



DEPARTURE ROUTE DESCRIPTION

TAKEOFF RUNWAY 11L: Climb heading 123° to 3200 MSL, then direct BURRO, thence. . . .
. . . .via (transition) maintain 17000, expect filed altitude 10 minutes after departure.

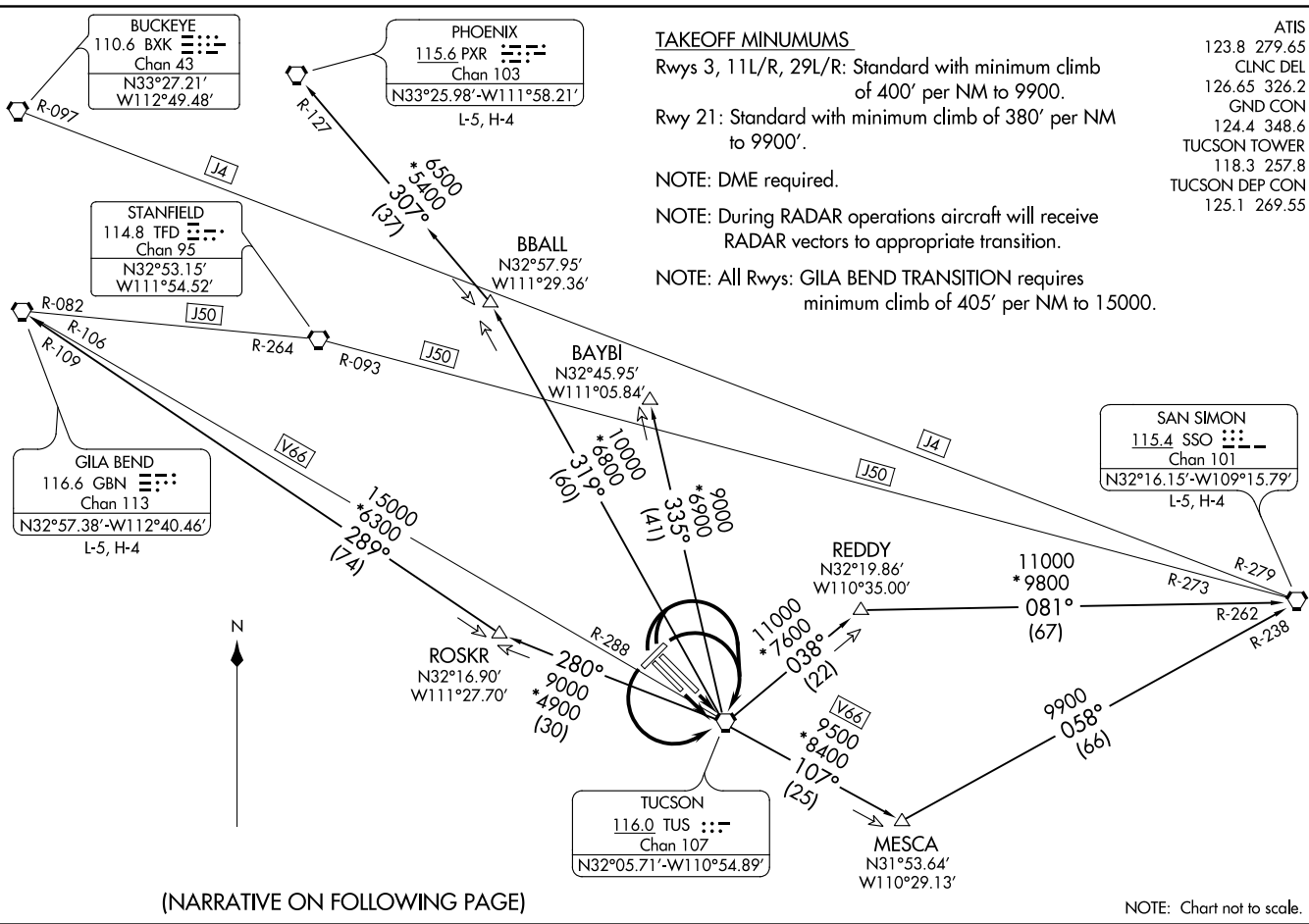
- BBALL TRANSITION (BURRO4.BBALL)
- GILA BEND TRANSITION (BURRO4.GBN)
- HOTTI TRANSITION (BURRO4.HOTTI)
- NOCHI TRANSITION (BURRO4.NOCHI)

NOTE: GPS required.
NOTE: RNAV 1.
NOTE: Chart not to scale.

BURRO FOUR DEPARTURE (RNAV)
(BURRO4.BURRO) 21JUL16
TUCSON, ARIZONA
TUCSON INTL (TUTS)

TUCSON EIGHT DEPARTURE
(TUS8.TUS) 20SEP12

TUCSON, ARIZONA
TUCSON INTL (TUS)



(NARRATIVE ON FOLLOWING PAGE)

TAKEOFF MINIMUMS

Rwys 3, 11L/R, 29L/R: Standard with minimum climb of 400' per NM to 9900.
 Rwy 21: Standard with minimum climb of 380' per NM to 9900'.

NOTE: DME required.

NOTE: During RADAR operations aircraft will receive RADAR vectors to appropriate transition.

NOTE: All Rwys: GILA BEND TRANSITION requires minimum climb of 405' per NM to 15000.

ATIS	123.8	279.65
CLNC DEL	126.65	326.2
GND CON	124.4	348.6
TUCSON TOWER	118.3	257.8
TUCSON DEP CON	125.1	269.55

TUCSON EIGHT DEPARTURE
(TUS8.TUS) 18312

AL-430 (FAA)

TUCSON INTL (TUS)
TUCSON, ARIZONA

NOTE: Chart not to scale.



DEPARTURE ROUTE DESCRIPTION

TAKEOFF RUNWAYS 11L/R: Climb direct TUS VORTAC. Thence. . . .

TAKEOFF RUNWAYS 3, 29L/R: Climbing right turn direct TUS VORTAC. Thence. . . .

TAKEOFF RUNWAY 21: Climbing left turn direct TUS VORTAC. Thence. . . .

. . . . via assigned transition. Maintain 17000, expect clearance to filed altitude
10 minutes after departure.

BAYBI TRANSITION (TUS8.BAYBI): From over TUS VORTAC via TUS R-335 to BAYBI.

BBALL TRANSITION (TUS8.BBALL): From over TUS VORTAC via TUS R-319 to BBALL.

GILA BEND TRANSITION (TUS8.GBN): From over TUS VORTAC via TUS R-280 and
GBN R-109 to GBN VORTAC.

MESCA TRANSITION (TUS8.MESCA): From over TUS VORTAC via TUS R-107 and
SSO R-238 to SSO VORTAC.

PHOENIX TRANSITION (TUS8.PXR): From over TUS VORTAC via TUS R-319 and
PXR R-127 to PXR VORTAC.

REDDY TRANSITION (TUS8.REDDY): From over TUS VORTAC via TUS R-038 and
SSO R-262 to SSO VORTAC.

SW-4, 08 NOV 2018 to 06 DEC 2018

SW-4, 08 NOV 2018 to 06 DEC 2018

WLDKT THREE DEPARTURE (RNAV)
(WLDKT3.WLDKT) 21JUL16

(WLDKT3.WLDKT) 18312
WLDKT THREE DEPARTURE (RNAV)

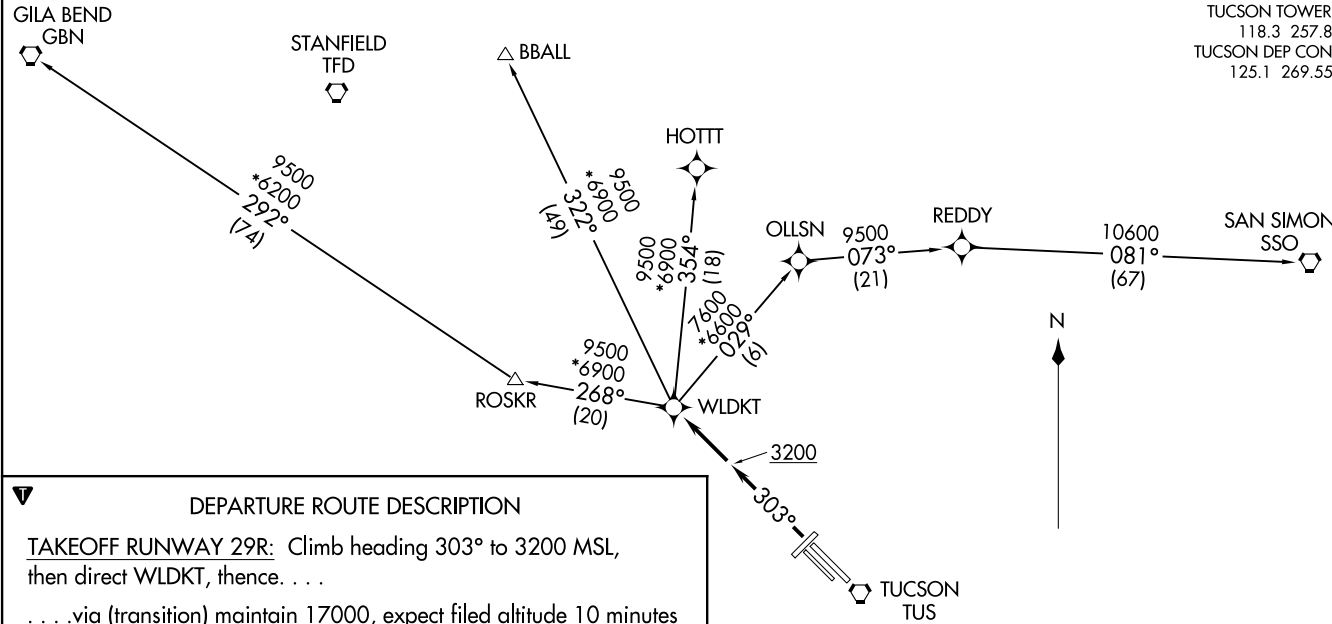
TOP ALTITUDE:
17000

WILLIE IWA

TAKEOFF MINIMUMS

Rwys 3, 11L, 11R, 21, 29L: NA - ATC.
Rwy 29R: Standard with minimum climb of 500' per NM to 9500.

ATIS
123.8 279.65
CLNC DEL
126.65 326.2
GND CON
124.4 348.6
TUCSON TOWER
118.3 257.8
TUCSON DEP CON
125.1 269.55



DEPARTURE ROUTE DESCRIPTION

TAKEOFF RUNWAY 29R: Climb heading 303° to 3200 MSL, then direct WLDKT, thence. . . .
. . . . via (transition) maintain 17000, expect filed altitude 10 minutes after departure.

BBALL TRANSITION (WLDKT3.BBALL)
GILA BEND TRANSITION (WLDKT3.GBN)
HOTT TRANSITION (WLDKT3.HOTT)
SAN SIMON TRANSITION (WLDKT3.SSO)

NOTE: GPS required.
NOTE: RNAV 1.
NOTE: Chart not to scale.

TUCSON, ARIZONA
TUCSON INTL (TUS)

TUCSON INTL (TUS)
TUCSON, ARIZONA