

WAAS CH 99626 W18A	APP CRS 176°	Rwy Idg 3907 TDZE 757 Apt Elev 758
--	------------------------	---

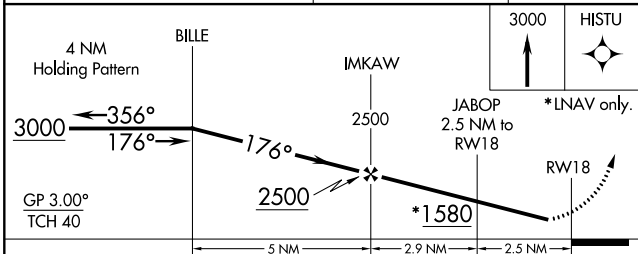
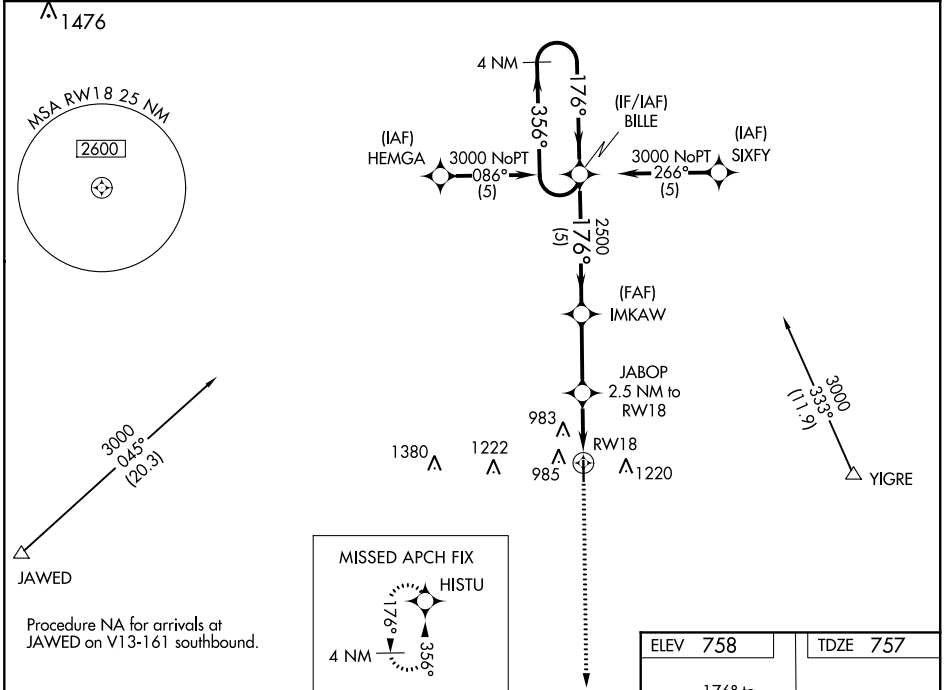
RNAV (GPS) RWY 18

TRENTON MUNI (TRX)

▼ Baro-VNAV NA. Use Chillicothe altimeter setting, when not received, use Kirksville altimeter setting and increase all DA 93 feet and all MDA 100 feet. Increase LPV visibility $\frac{3}{8}$ mile all Cats and LNAV/VNAV $\frac{1}{4}$ all Cats. DME/DME RNP-0.3 NA.
▲ NA Helicopter visibility reduction below $\frac{3}{4}$ SM NA.

MISSED APPROACH: Climb to 3000 direct HISTU and hold.

KANSAS CITY CENTER 125.25 235.975	UNICOM 122.8 (CTAF) 0
---	---------------------------------



ELEV 758	TDZE 757
176° to RW18	
81 4307 X 75 36	
MIRL Rwy 18-36 0 REIL Rwy 18 and 36 0	

CATEGORY	A	B	C	D
LPV DA	1098-1 $\frac{1}{8}$	341 (400-1 $\frac{1}{8}$)		NA
LNAV/VNAV DA	1248-1 $\frac{3}{4}$	491 (500-1 $\frac{3}{4}$)		NA
LNAV MDA	1180-1	423 (500-1)		NA
CIRCLING	1340-1	582 (600-1)		NA

NC-3, 09 SEP 2021 to 07 OCT 2021

NC-3, 09 SEP 2021 to 07 OCT 2021

WAAS CH 63126 W36A	APP CRS 356°	Rwy Idg 4307 TDZE 757 Apt Elev 758
--	------------------------	---

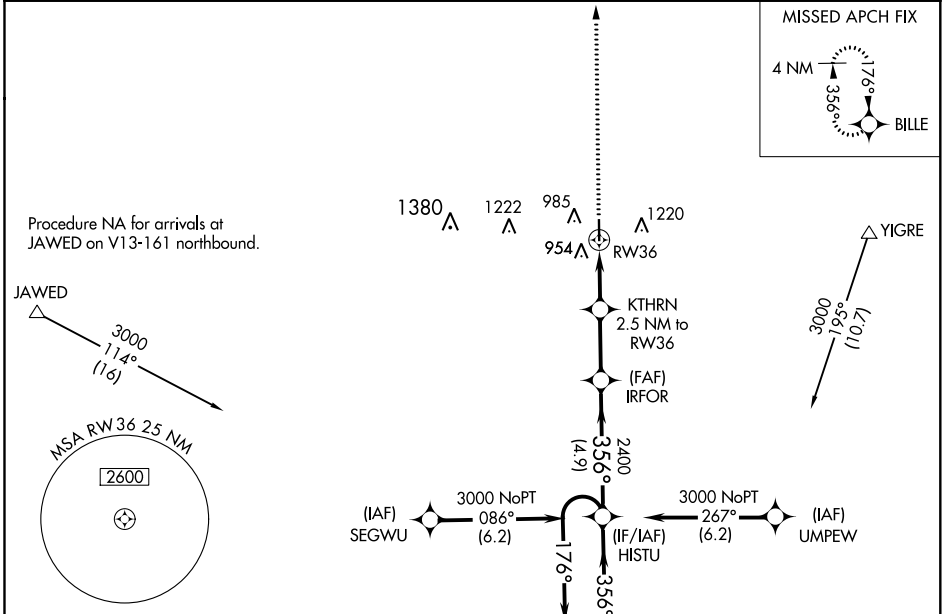
RNAV (GPS) RWY 36

TRENTON MUNI (TRX)

NA When VGSI inop, Circling Rwy 18 NA at night. Baro-VNAV NA. Use Chillicothe altimeter setting. When not received, use Kirksville altimeter setting and increase all DA 93 feet and all MDA 100 feet. Increase LPV visibility ¼ mile all Cats and LNAV/VNAV ⅓ mile all Cats. DME/DME RNP-0.3 NA. Visibility reduction by helicopters NA.

MISSED APPROACH: Climb to 3000 direct BILLE and hold.

KANSAS CITY CENTER 125.25 235.975	UNICOM 122.8 (CTAF)
---	-------------------------------

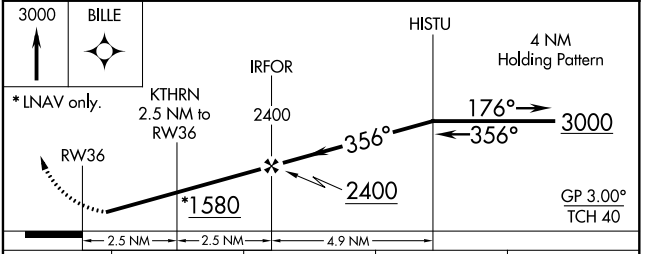
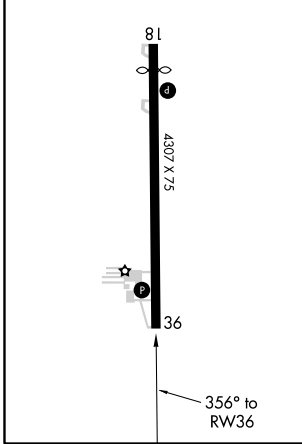


NC-3, 09 SEP 2021 to 07 OCT 2021

NC-3, 09 SEP 2021 to 07 OCT 2021

ELEV 758	TDZE 757
----------	----------

MIRL Rwy 18-36
REIL Rwy 18 and 36



CATEGORY	A	B	C	D
LPV DA	1082-1 1/8	325 (400-1 1/8)		NA
LNAV/DA VNAV	1195-1 1/2	438 (500-1 1/2)		NA
LNAV MDA	1320-1	563 (600-1)		NA
CIRCLING	1340-1	582 (600-1)		NA