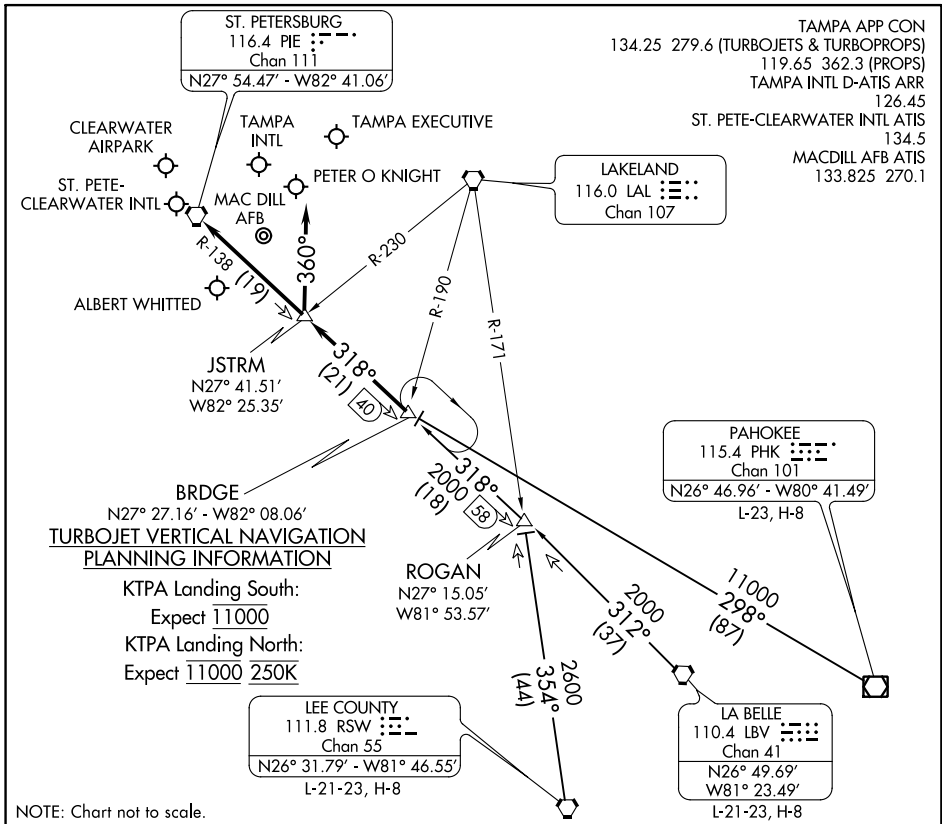


# BRDGE EIGHT ARRIVAL

TAMPA, FLORIDA



SE-3, 19 JUL 2018 to 16 AUG 2018

SE-3, 19 JUL 2018 to 16 AUG 2018

## ARRIVAL ROUTE DESCRIPTION

**LA BELLE TRANSITION (LBV.BRDGE8):** From over LBV VORTAC on LBV R-312 & PIE R-138 to BRDGE INT. Thence. . .

**LEE COUNTY TRANSITION (RSW.BRDGE8):** From over RSW VORTAC on RSW R-354 to ROGAN INT, then on PIE R-138 to BRDGE INT. Thence. . .

**PAHOKEE TRANSITION (PHK.BRDGE8):** From over PHK VOR/DME on PHK R-298 to BRDGE INT. Thence. . .

### KTPA:

. . . RWY 19L/R: From over BRDGE INT on PIE R-138 to JSTRM INT. Depart JSTRM INT heading 360° for vector to final approach course.

. . . RWY 01L/R: From over BRDGE INT on PIE R-138 to PIE VORTAC. Expect RADAR vector to final approach course after BRDGE INT.

### KPIE, KCLW, KTPF, KSPG, KMCF, KVDF:

. . . From over BRDGE INT on PIE R-138 to PIE VORTAC. Expect RADAR vector to final approach course/airport after BRDGE INT.

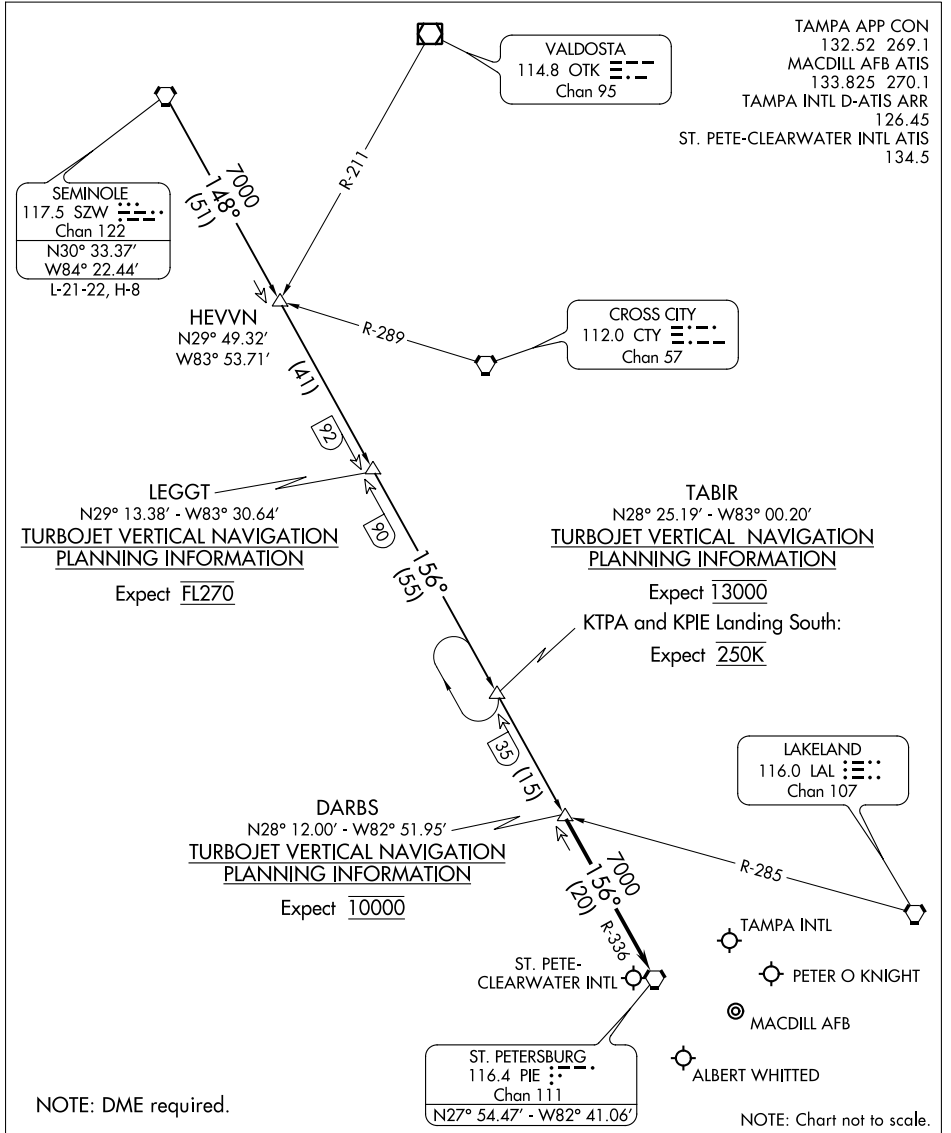
**LOST COMMUNICATIONS:** STANDARD.

# BRDGE EIGHT ARRIVAL

TAMPA, FLORIDA

# DARBS THREE ARRIVAL

TAMPA, FLORIDA



SE-3, 19 JUL 2018 to 16 AUG 2018

SE-3, 19 JUL 2018 to 16 AUG 2018

## ARRIVAL ROUTE DESCRIPTION

**SEMINOLE TRANSITION (SZW.DARBS3):** From over SZW VORTAC on SZW R-148 and PIE R-336 to DARBS INT. Thence. . . .

. . . .from over DARBS INT on PIE R-336 to PIE VORTAC. Expect RADAR vectors to final approach course.

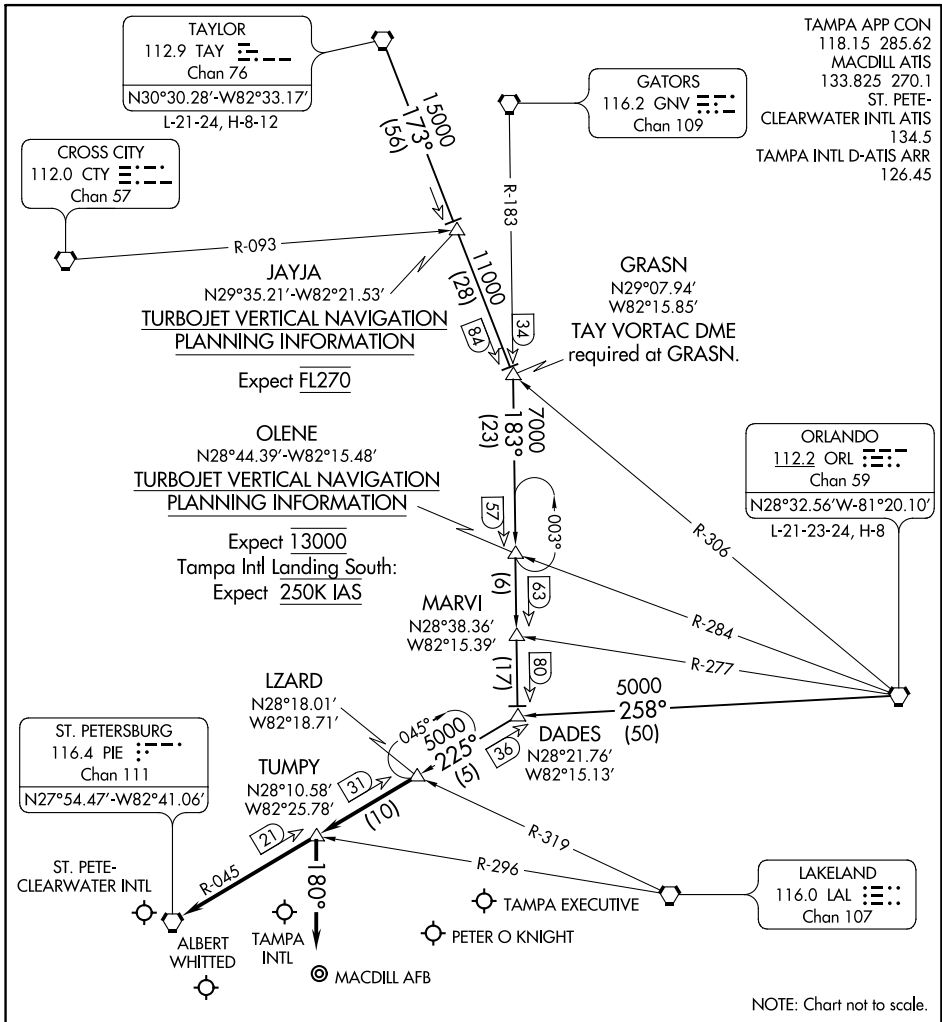
LOST COMMUNICATIONS: STANDARD.

# DARBS THREE ARRIVAL

TAMPA, FLORIDA

# LZARD SIX ARRIVAL

TAMPA, FLORIDA



SE-3, 19 JUL 2018 to 16 AUG 2018

SE-3, 19 JUL 2018 to 16 AUG 2018

**TAYLOR TRANSITION (TAY.LZARD6):** From over TAY VORTAC on TAY R-173 to GRASN INT, then on GNV R-183 to DADES INT, then on PIE R-045 to LZARD INT. Thence. . . .

**ORLANDO TRANSITION (ORL.LZARD6):** From over ORL VORTAC on ORL R-258 to DADES INT, then on PIE R-045 to LZARD INT. Thence. . . .

**TAMPA INTL:**  
 . . . RWY 1L/R: From over LZARD INT on PIE R-045 to TUMPHY INT. Depart TUMPHY INT heading 180° for RADAR vectors to final approach course.  
 . . . RWY 19L/R: From over LZARD INT on PIE R-045 to PIE VORTAC. Expect RADAR vectors to final approach after LZARD INT.

**ALL OTHER AIRPORTS:** From over LZARD INT on PIE R-045 to PIE VORTAC. Expect RADAR vectors to the airport after LZARD INT.

# LZARD SIX ARRIVAL

TAMPA, FLORIDA