

APP CRS	Rwy Idg	<b>3405</b>
<b>222°</b>	TDZE	<b>7</b>
	Apt Elev	<b>8</b>

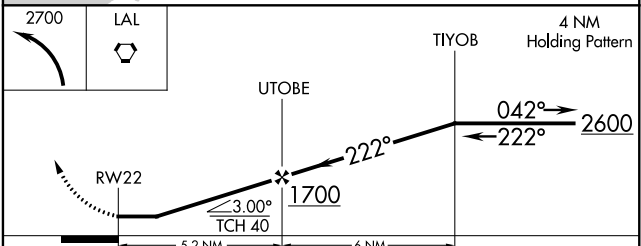
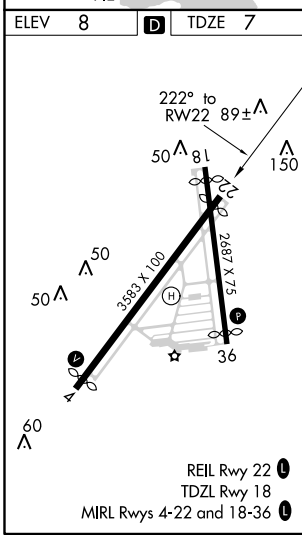
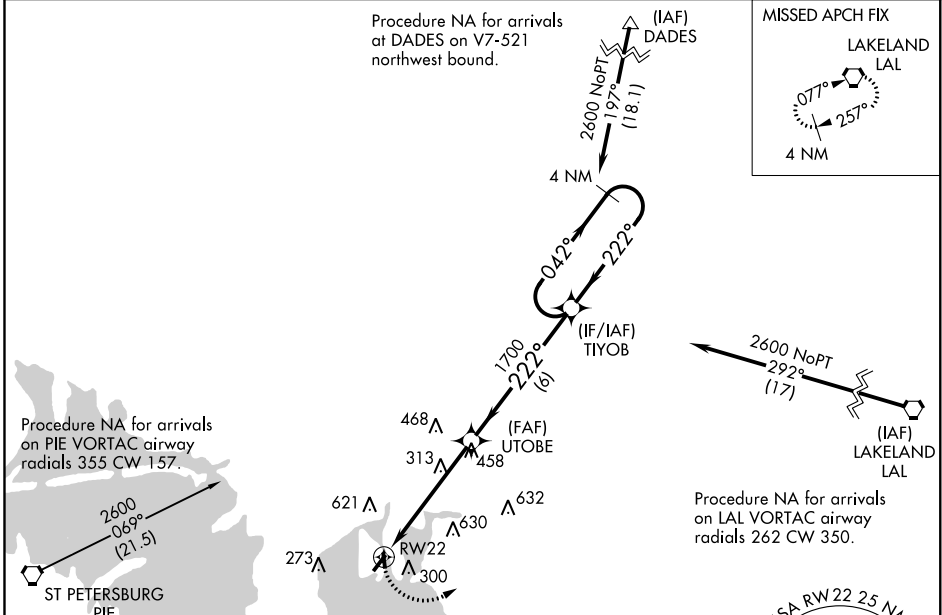
# RNAV (GPS) RWY 22

PETER O KNIGHT (TPF)

**⚠** DME/DME RNP-0.3 NA. Helicopter visibility reduction below 1 SM NA. When local altimeter setting not received, use Tampa Intl altimeter setting and increase all MDA 20 feet. Night landing: Rwy 4, 22 NA. Circling NA to Rwy 18. Circling NA northwest of Rwy 4-22.

**MISSED APPROACH:** Climbing left turn to 2700 direct LAL VORTAC and hold.

<b>AWOS-3</b> <b>118.925</b>	<b>TAMPA APP CON</b> <b>119.9 290.3</b>	<b>CLNC DEL</b> <b>119.8</b>	<b>UNICOM</b> <b>122.725 (CTAF) 0</b>
---------------------------------	--	---------------------------------	--



CATEGORY	A	B	C	D
LNAV MDA	580-1	573 (600-1)	NA	
CIRCLING	660-1 652 (700-1)	700-1 692 (700-1)	NA	

SE-3, 26 APR 2018 to 24 MAY 2018

SE-3, 26 APR 2018 to 24 MAY 2018

WAAS CH <b>63220</b>	APP CRS <b>344°</b>	Rwy Idg <b>2283</b> TDZE <b>8</b> Apt Elev <b>8</b>
-------------------------	------------------------	---

# RNAV (GPS) RWY 36

PETER O KNIGHT (TPF)

**⚠** Circling NA northwest of Rwy 4-22. DME/DME RNP-0.3 NA. When local altimeter setting not received, use Tampa Intl altimeter setting and increase all MDA 20 feet. Helicopter visibility reduction below 1 SM NA. Straight-in minimums NA at night. Night Landing: Rwy 4, 22 NA. Circling NA to Rwy 18.

MISSED APPROACH: Climbing right turn to 2700 direct LAL VORTAC and hold.

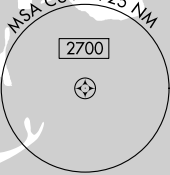
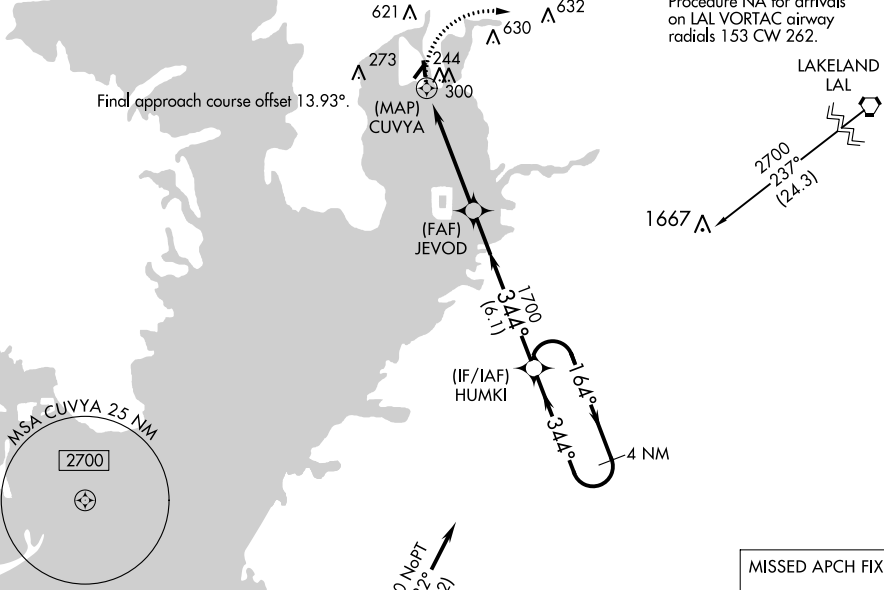
AWOS-3  
**118.925**

TAMPA APP CON  
**119.9 290.3**

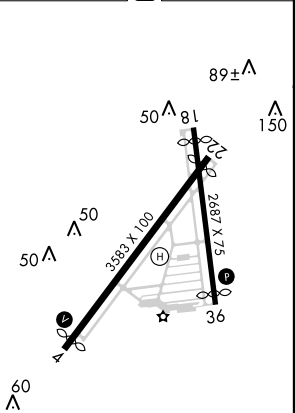
CLNC DEL  
**119.8**

UNICOM  
**122.725 (CTAF)**

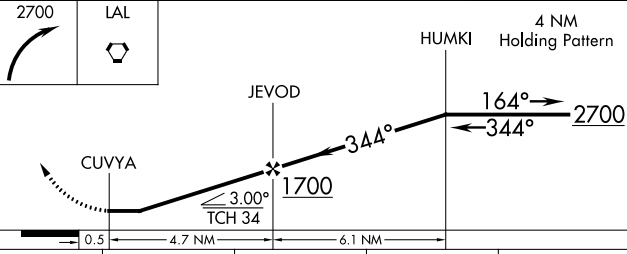
Procedure NA for arrivals on LAL VORTAC airway radials 153 CW 262.



ELEV 8 **D** TDZE 8



REIL Rwy 22 **Ⓛ**  
TDZL Rwy 18  
MIRL Rwy 4-22 and 18-36 **Ⓛ**



CATEGORY	A	B	C	D
LP MDA	440-1	432 (500-1)		NA
LNAV MDA	500-1	492 (500-1)		NA
CIRCLING	660-1 652 (700-1)	700-1 692 (700-1)		NA

SE-3, 26 APR 2018 to 24 MAY 2018

SE-3, 26 APR 2018 to 24 MAY 2018