

LOC I-TIW 109.1	APP CRS 167°	Rwy Idg 5002
		TDZE 294
		Apt Elev 295

ILS or LOC RWY 17

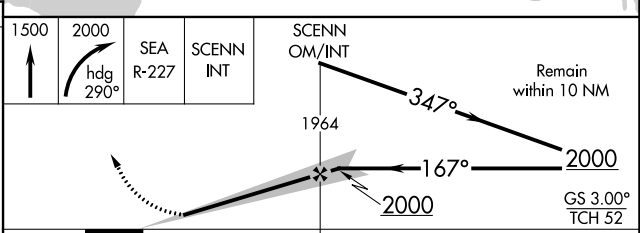
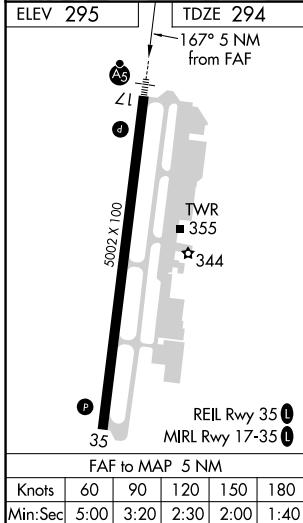
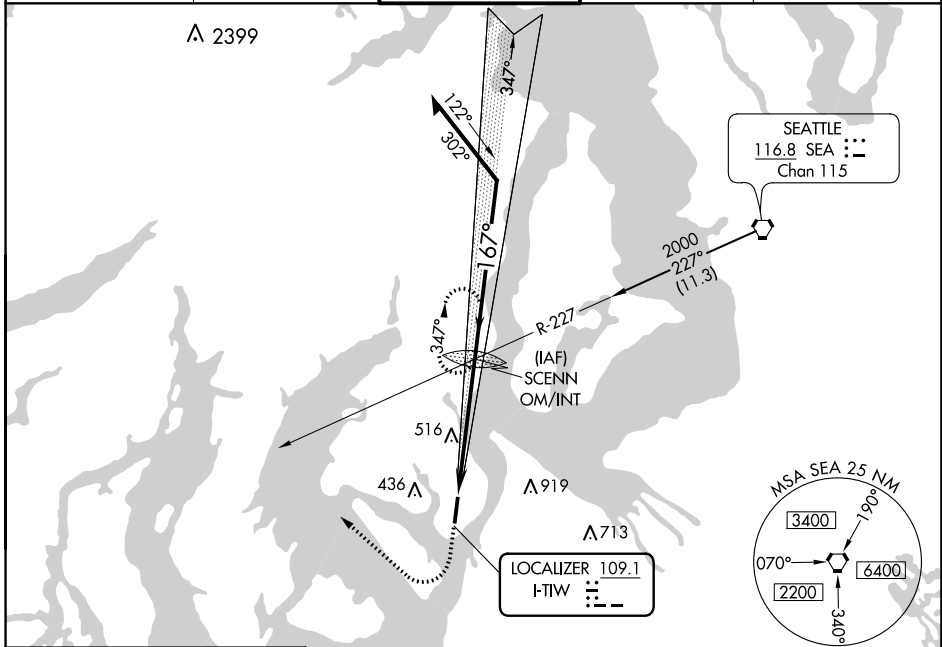
TACOMA NARROWS (TIW)

▼ When control tower closed, obtain local altimeter setting on UNICOM, when not received, use McChord Fld altimeter setting minimums.
▲ Circling not authorized east of Rwy 17-35.



MISSED APPROACH: Climb to 1500, then climbing right turn to 2000 via heading 290° and SEA VORTAC R-227 to SCENN INT and hold.

ATIS 124.05	SEATTLE APP CON 120.1 290.9	TACOMA TOWER* 118.5 (CTAF) 0 253.5	GND CON 121.8	UNICOM 122.95
-----------------------	---------------------------------------	--	-------------------------	-------------------------



CATEGORY	A	B	C	D
S-ILS 17	494-½ 200 (200-½)			
S-LOC 17	760-½	466 (500-½)	466 (500-¾)	760-1
CIRCLING	760-1	465 (500-1)	820-1½	860-2
MCHORD FLD ALTIMETER SETTING MINIMUMS				
S-ILS 17	519-½ 225 (300-½)			
S-LOC 17	780-½	486 (500-½)	780-¾	780-1
CIRCLING	800-1	505 (600-1)	860-1½	900-2

NW-1, 23 MAR 2023 to 20 APR 2023

NW-1, 23 MAR 2023 to 20 APR 2023

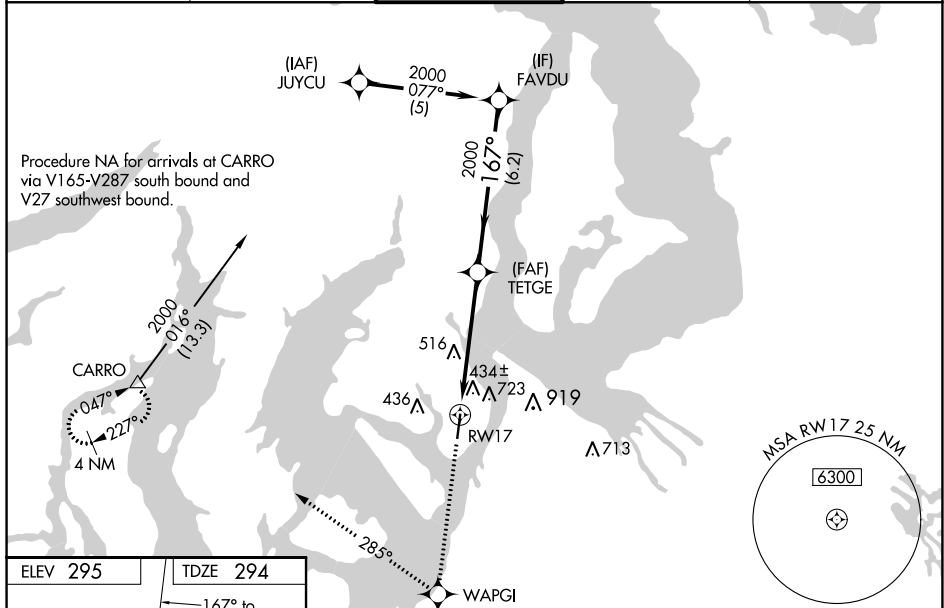
WAAS CH 8260B W17A	APP CRS 167°	Rwy Idg TDZE 294 Apt Elev 295	5002
--	------------------------	---	-------------

RNAV (GPS) RWY 17

TACOMA NARROWS (TIW)

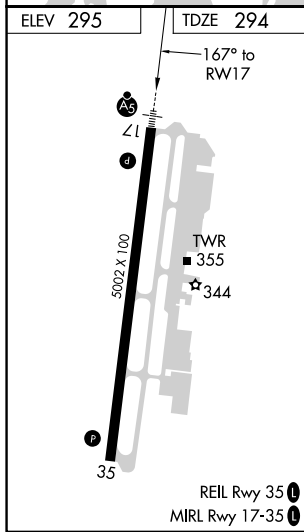
RNP APCH.	MALSRS	MISSED APPROACH: Climb to 4000 direct WAPGI and right turn via 285° track to CARRO and hold, continue climb-in-hold to 4000.
<p>▼ VDP NA with McChord Fld altimeter setting. For inoperative MALSRS, increase LPV all Cats visibility to 1½ mile. Circling NA east of Rwy 17/35.</p> <p>▲ Baro-VNAV NA when using McChord Fld altimeter setting. For uncompensated Baro-VNAV systems, LNAV/VNAV NA below -15°C (5°F) or above 48°C (118°F). When local altimeter setting not received, use McChord Fld altimeter setting and increase all DA 25 feet, all MDA 40 feet, and increase LPV all Cats visibility ½ mile.</p>		

ATIS 124.05	SEATTLE APP CON 120.1 290.9	TACOMA TOWER ★ 118.5 (CTAF) 0 253.5	GND CON 121.8	UNICOM 122.95
-----------------------	---------------------------------------	---	-------------------------	-------------------------



NW-1, 23 MAR 2023 to 20 APR 2023

NW-1, 23 MAR 2023 to 20 APR 2023



4000	WAPGI	CARRO	TETGE	FAVDU	Procedure Turn NA
↑	✧	↪ tr 285°	△		
* LNAV only.		* 2 NM to RWY 17	← 167°	2000	GP 3.00° TCH 52
RWY 17		← 2 NM	← 3.1 NM	← 6.2 NM	
CATEGORY	A	B	C	D	
LPV DA		638-5/8	344 (400-5/8)		
LNAV/VNAV DA		992-2	698 (700-2)		
LNAV MDA	980-1/2	686 (700-1/2)	980-1 1/2	686 (700-1 1/2)	
<input checked="" type="checkbox"/> CIRCLING	980-1	685 (700-1)	980-2	980-2 1/4	685 (700-2 1/4)

WAAS CH 50312 W35A	APP CRS 347°	Rwy ldg 5002 TDZE 295 Apt Elev 295
--	------------------------	---

RNAV (GPS) RWY 35

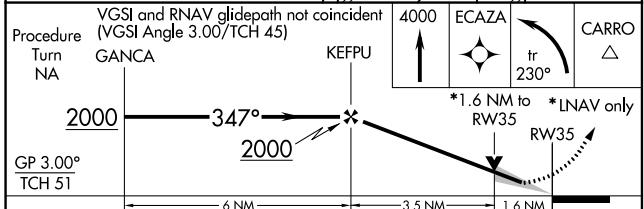
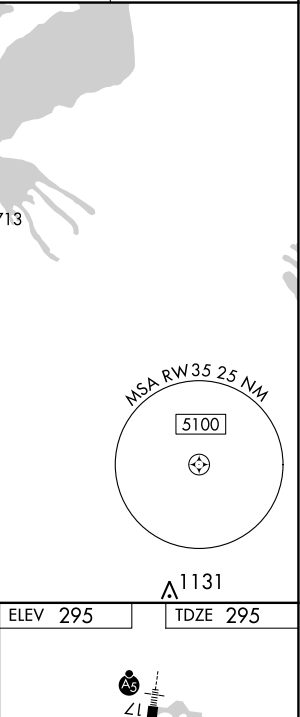
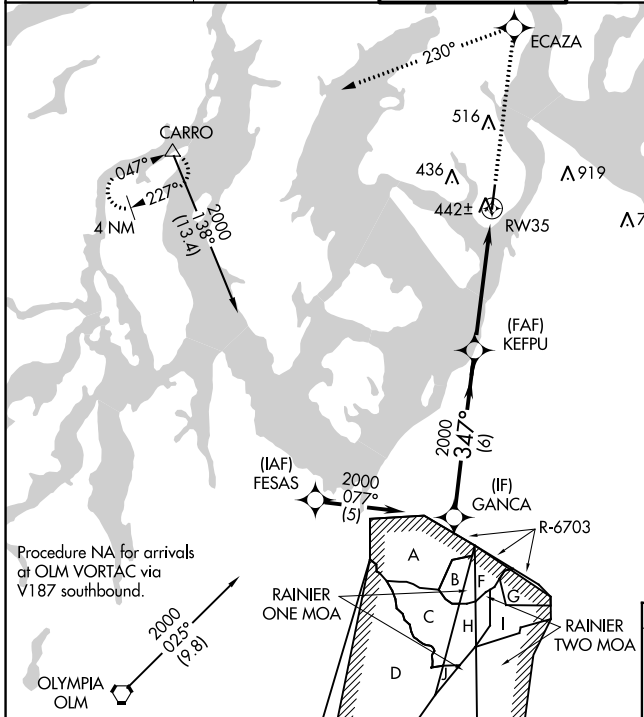
TACOMA NARROWS (TIW)

RNP APCH.

▼ Baro-VNAV NA when using McChord Fld altimeter setting. For uncompensated Baro-VNAV systems, LNAV/VNAV NA below -15°C (5°F) or above 48°C (118°F). Circling NA east of Rwy 17-35. When local altimeter setting not received, use McChord Fld altimeter setting and increase all DA 25 feet and all MDA 40 feet.

MISSED APPROACH: Climb to 4000 direct ECAZA and left turn via 230° track to CARRO and hold, continue climb-in-hold to 4000.

ATIS 124.05	SEATTLE APP CON 120.1 290.9	TACOMA TOWER * 118.5 (CTAF) 0 253.5	GND CON 121.8	UNICOM 122.95
-----------------------	---------------------------------------	---	-------------------------	-------------------------



CATEGORY	A	B	C	D
LPV DA	561-7/8		266 (300-7/8)	
LNAV/VNAV DA	769-1 3/4		474 (500-1 3/4)	
LNAV MDA	840-1	545 (600-1)	840-1 1/2	840-1 3/4
			545 (600-1 1/2)	545 (600-1 3/4)
CIRCLING	980-1	685 (700-1)	980-2	980-2 1/4
			685 (700-2)	685 (700-2 1/4)

