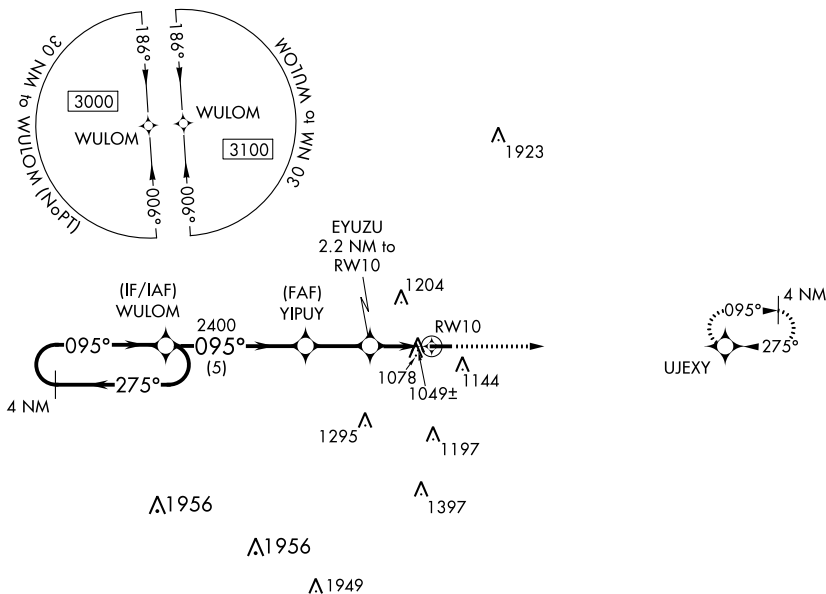


WAAS CH <b>61134</b> <b>W10A</b>	APP CRS <b>095°</b>	Rwy Idg TDZE Apt Elev	<b>4002</b> <b>920</b> <b>920</b>
--	------------------------	-----------------------------	---

# RNAV (GPS) RWY 10

MASON JEWETT FIELD (TEW)

RNP APCH.		MISSED APPROACH: Climb to 3000 direct UJEXY and hold.
<p><b>▼</b> Rwy 10 helicopter visibility reduction below 1 SM NA. Straight-in Rwy 10 NA at night, Circling Rwy 10 NA at night.</p> <p><b>▲</b></p>		
AWOS-3P <b>119.425</b>	GREAT LAKES APP CON ★ <b>118.65 226.4</b>	UNICOM <b>122.7 (CTAF) 0</b>



ELEV 920	TDZE 920
----------	----------

4 NM Holding Pattern	Visual Segment - Obstacles.	3000	UJEXY	
<p>WULOM</p> <p>YIPUY</p> <p>EYUZU 2.2 NM to RWY 10</p> <p>RWY 10</p> <p>5 NM</p> <p>2.3 NM</p> <p>2.2 NM</p>				
CATEGORY	A	B	C	D
LP MDA	1300-1	380 (400-1)		NA
LNVA MDA	1380-1	460 (500-1)		NA
CIRCLING	1500-1	580 (600-1)		NA

EC-1, 12 AUG 2021 to 09 SEP 2021

EC-1, 12 AUG 2021 to 09 SEP 2021

WAAS CH <b>53534</b> <b>W28A</b>	APP CRS <b>275°</b>	Rwy Idg TDZE Apt Elev	<b>4002</b> <b>918</b> <b>920</b>
--	------------------------	-----------------------------	---

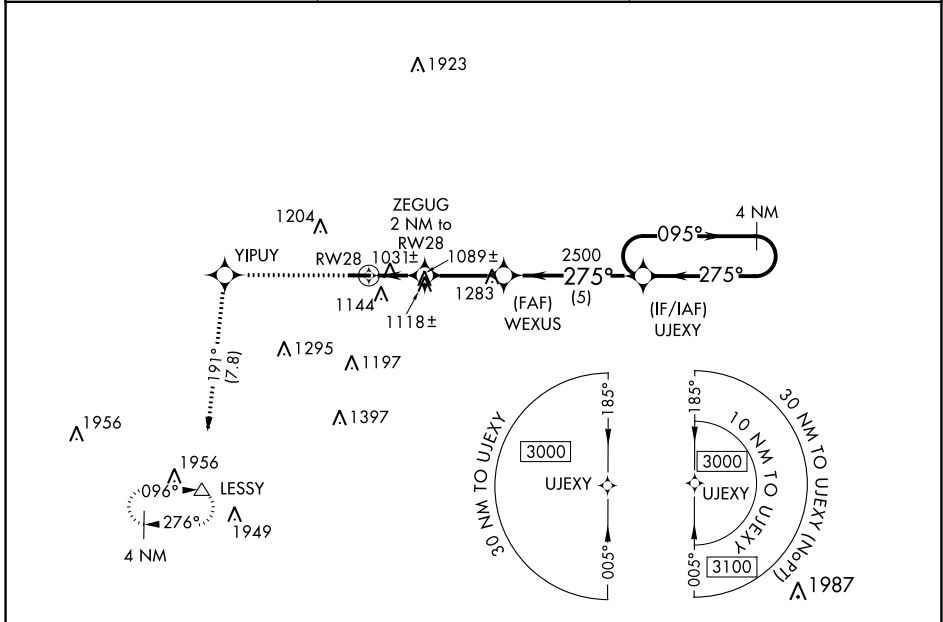
# RNAV (GPS) RWY 28

MASON JEWETT FIELD (TEW)

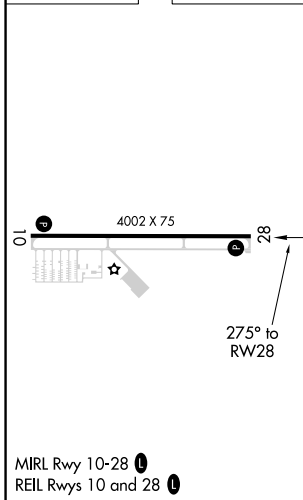
RNP APCH.  
 ▼ Rwy 28 helicopter visibility reduction below 3/4 SM NA.  
 ▲ Circling Rwy 10 NA at night.

MISSED APPROACH: Climb to 3000 direct YIPUY and on track 191° direct LESSY and hold.

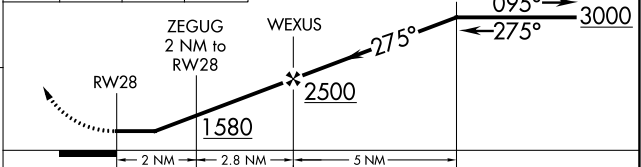
AWOS-3P <b>119.425</b>	GREAT LAKES APP CON ★ <b>118.65 226.4</b>	UNICOM <b>122.7 (CTAF)</b>
---------------------------	--	-------------------------------



ELEV 920	TDZE 918
----------	----------



3000	YIPUY	tr 191°	LESSY	Visual Segment - Obstacles.	4 NM Holding Pattern
------	-------	---------	-------	-----------------------------	----------------------



CATEGORY		A	B	C	D
LP	MDA	1300-1	382 (400-1)		NA
	LNAV MDA	1380-1	462 (500-1)		NA
	CIRCLING	1500-1	580 (600-1)		NA

EC-1, 12 AUG 2021 to 09 SEP 2021

EC-1, 12 AUG 2021 to 09 SEP 2021