

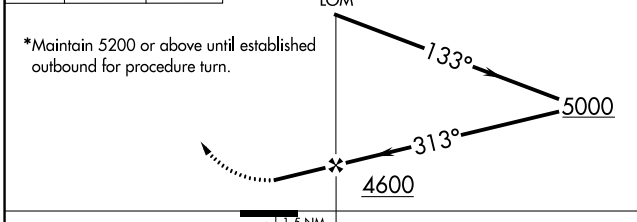
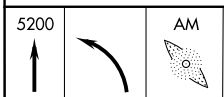
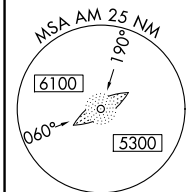
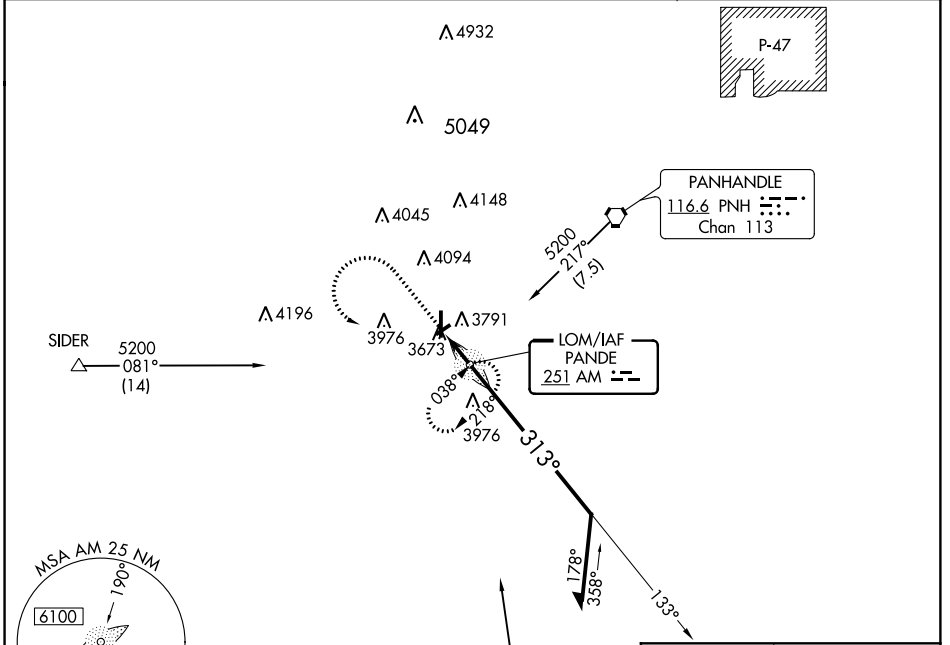
NDB AM <b>251</b>	APP CRS <b>313°</b>	Rwy Idg TDZE Apt Elev	<b>N/A</b> <b>N/A</b> <b>3648</b>
----------------------	------------------------	-----------------------------	---

**NDB-A**  
TRADEWIND (TDW)

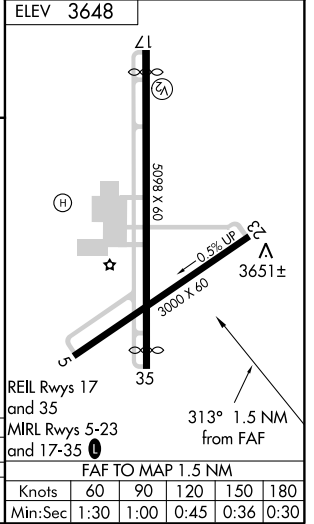
**▼** Use Rick Husband Amarillo Intl altimeter setting. Circling NA to runway 5-23. Circling to Rwy 35 NA at night. Helicopter visibility reduction below 1 SM NA.

**▲** NA MISSED APPROACH: Climb to 5200, then left turn direct AM LOM and hold.

AWOS-AV <b>118.475</b>	AMARILLO APP CON * <b>119.5 307.0</b>	CLNC DEL <b>125.4</b>	UNICOM <b>122.8</b> (CTAF) <b>0</b>
---------------------------	--	--------------------------	--



CATEGORY	A	B	C	D
CIRCLING	4220-1 572 (600-1)	4260-1 612 (700-1)	4260-1¾ 612 (700-1¾)	4480-2¾ 832 (900-2¾)



SC-2. 01 MAR 2018 to 29 MAR 2018

SC-2. 01 MAR 2018 to 29 MAR 2018

WAAS CH <b>42632</b> <b>W35A</b>	APP CRS <b>352°</b>	Rwy Idg TDZE Apt Elev	<b>4809</b> <b>3641</b> <b>3649</b>
--	------------------------	-----------------------------	---

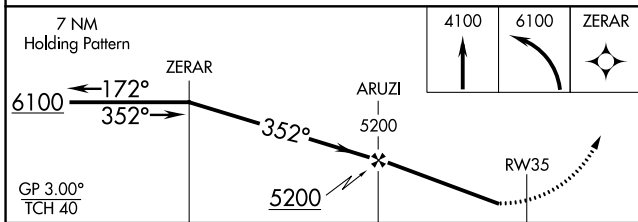
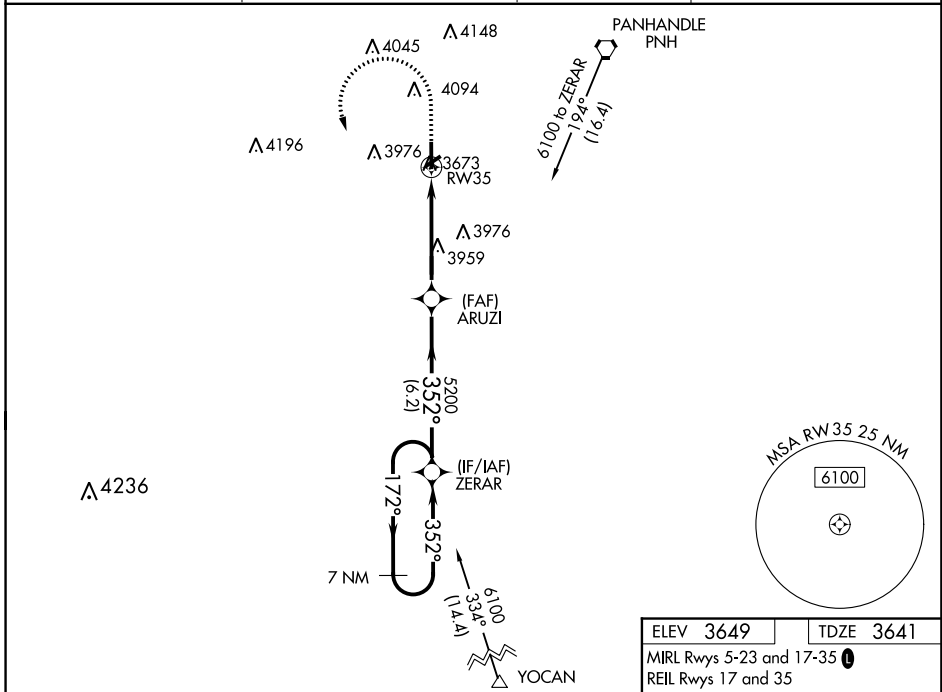
# RNAV (GPS) RWY 35

TRADEWIND (TDW)

**NA** Baro-VNAV NA. Use Rick Husband Amarillo Intl altimeter setting; when not received, use Hereford altimeter setting and increase all DA 69 feet and all MDA 80 feet, increase LPV all Cats visibility 1/8 mile and LNAV/VNAV all Cats visibility 1/4 mile. Procedure NA at night. DME/DME RNP-0.3 NA. Helicopter visibility reduction below 15M NA.

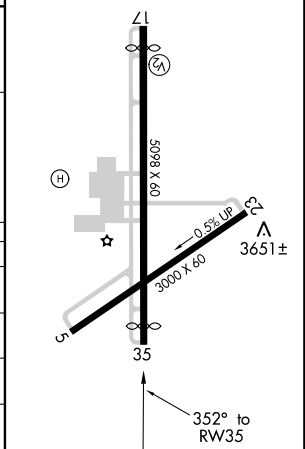
**MISSED APPROACH:** Climb to 4100 then climbing left turn to 6100 direct ZERAR and hold.

AWOS-AV <b>118.475</b>	AMARILLO APP CON ★ <b>119.5 307.0</b>	CLNC DEL <b>125.4</b>	UNICOM <b>122.8 (CTAF) 0</b>
---------------------------	--	--------------------------	---------------------------------



CATEGORY	A	B	C	D
LPV DA	3913-1	272 (300-1)		NA
LNAV/VNAV DA	3947-1	306 (300-1)		NA
LNAV MDA	4300-1	659 (700-1)		NA
CIRCLING	4300-1	651 (700-1)		NA

ELEV 3649 | TDZE 3641  
MIRL Rwy 5-23 and 17-35  
REIL Rwy 17 and 35



SC-2. 01 MAR 2018 to 29 MAR 2018

SC-2. 01 MAR 2018 to 29 MAR 2018