

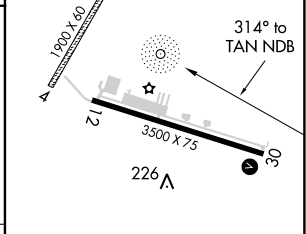
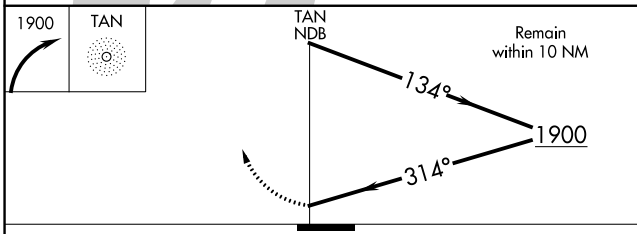
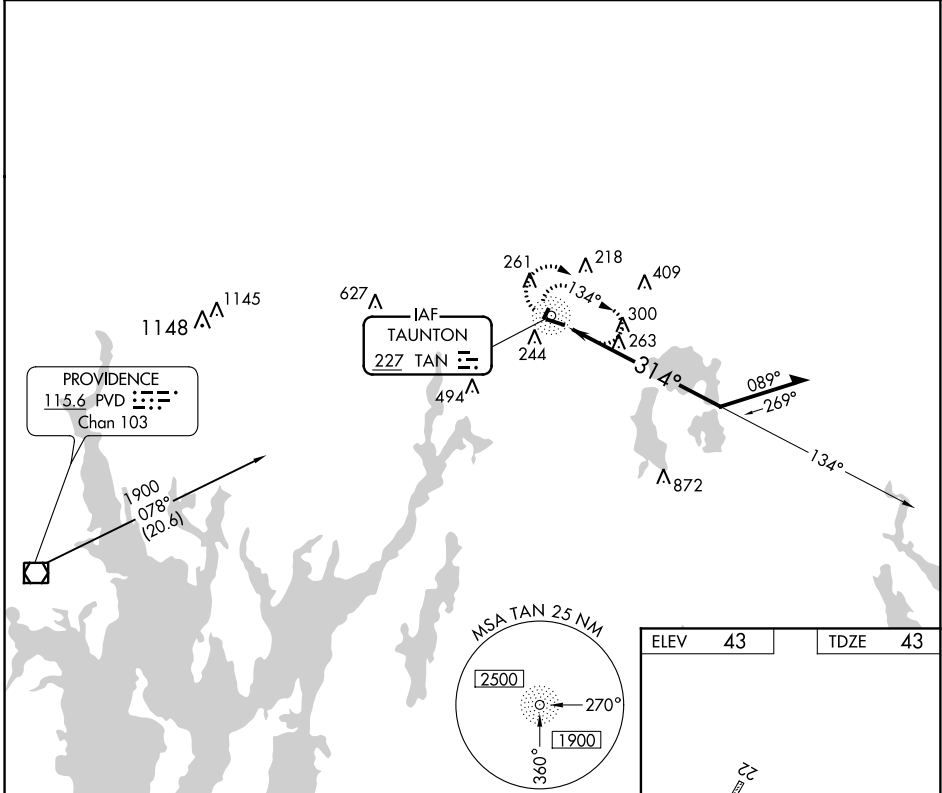
NDB TAN 227	APP CRS 314°	Rwy ldg TDZE Apt Elev	3500 43 43
-----------------------	------------------------	-----------------------------	---------------------------------------

NDB RWY 30
TAUNTON MUNI - KING FIELD (TAN)

When local altimeter setting not received, use New Bedford altimeter setting and increase all MDA 40 feet, S-30 and Circling Cats. C and D visibility ¼ mile. Circling NA for Rwy 4-22. Helicopter visibility reduction below 1 SM NA.

MISSED APPROACH: Climbing right turn to 1900 in TAN NDB holding pattern.

ASOS 132.675	PROVIDENCE APP CON* 128.7 269.525	UNICOM 122.7 (CTAF) 0
------------------------	---	---------------------------------



CATEGORY	A	B	C	D
S-30	700-1	657 (700-1)	700-1¾ 657 (700-1¾)	700-2 657 (700-2)
CIRCLING	700-1	657 (700-1)	700-1¾ 657 (700-1¾)	700-2 657 (700-2)

REIL Rwy 30
MIRL Rwy 12-30 0

NE-1, 29 MAR 2018 to 26 APR 2018

NE-1, 29 MAR 2018 to 26 APR 2018

WAAS CH 99739 W12A	APP CRS 124°	Rwy Idg TDZE 41 Apt Elev 42	3500
--	------------------------	---	-------------

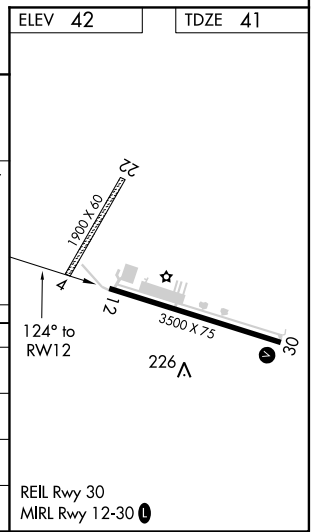
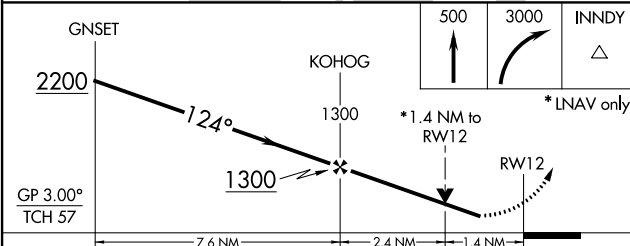
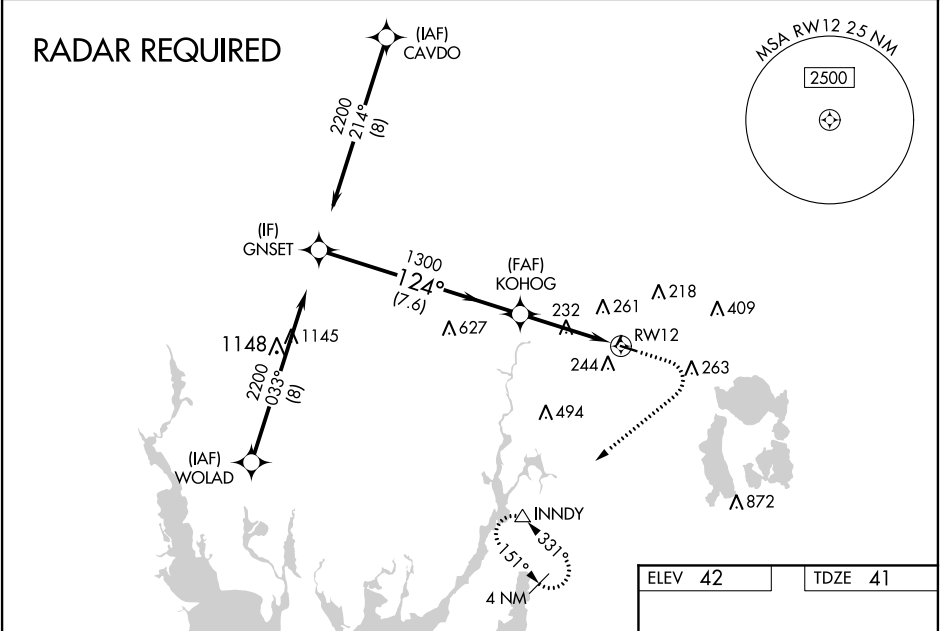
RNAV (GPS) RWY 12

TAUNTON MUNI-KING FIELD (TAN)

⚠ Circling NA to Rwy 4 and 22. For uncompensated Baro-VNAV systems, LNAV/VNAV NA below -3°C (27°F) or above 54°C (130°F). Baro-VNAV NA when using Bedford altimeter setting. DME/DME RNP-0.3 NA. Rwy 12 helicopter visibility reduction below ¼ SM NA. When local altimeter setting not received, use New Bedford altimeter setting and increase LPV DA to 425 feet, LNAV/VNAV DA to 448 feet and all MDA 40 feet, increase LPV and LNAV/VNAV visibilities all Cats ⅛ SM, increase LNAV Cat C/D visibility ⅛ SM, and increase Circling Cat D visibility ¼ SM.

MISSED APPROACH: (Do not exceed 210K until INNDY) Climb to 500 then climbing right turn to 3000 direct INNDY and hold, continue climb in hold to 3000.

ASOS 132.675	PROVIDENCE APP CON* 128.7 269.525	UNICOM 122.7 (CTAF) 0
------------------------	---	---------------------------------



CATEGORY	A	B	C	D
LPV DA		391-1½	350 (400-1½)	
LNAV/VNAV DA		414-1¼	373 (400-1¼)	
LNAV MDA	540-1	499 (500-1)	540-1¾	499 (500-1¾)
C CIRCLING	560-1 518 (600-1)	580-1 538 (600-1)	660-1¾ 618 (700-1¾)	760-2¼ 718 (800-2¼)

NE-1, 29 MAR 2018 to 26 APR 2018

NE-1, 29 MAR 2018 to 26 APR 2018

WAAS CH 58139 W30A	APP CRS 304°	Rwy Idg TDZE Apt Elev	3500 42 42
--	------------------------	-----------------------------	---------------------------------------

RNAV (GPS) RWY 30

TAUNTON MUNI-KING FIELD (TAN)

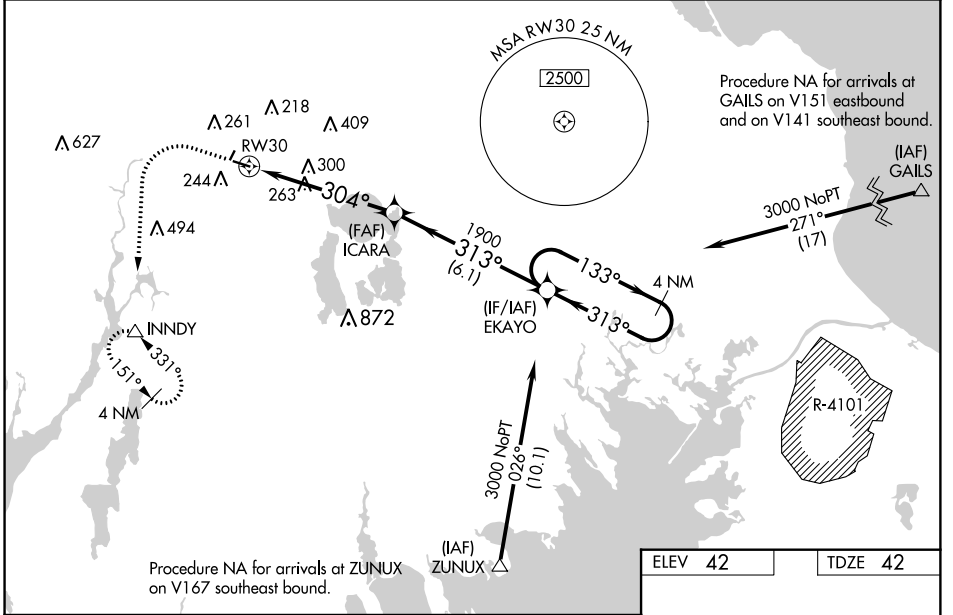
⚠ Circling NA to Rwy 4 and 22. Baro-VNAV NA when using New Bedford altimeter setting. For uncompensated Baro-VNAV systems, LNAV/VNAV NA below -3°C (27°F) or above 54°C (130°F). DME/DME RNP-0.3 NA. When local altimeter setting not received, use New Bedford altimeter setting and increase LPV DA to 393 feet, LNAV/VNAV DA to 560 feet, and all MDAs 40 feet, increase LPV and LNAV/VNAV visibilities all Cats 1/8 SM, increase LNAV Cat C/D visibility 1/8 SM, and increase Circling Cat D visibility 1/4 SM. Rwy 30 helicopter visibility reduction below 1 SM NA.

MISSED APPROACH: (Do not exceed 210K until INNDY) Climb to 500 then climbing left turn to 3000 direct INNDY and hold, continue climb in hold to 3000.

ASOS 132.675

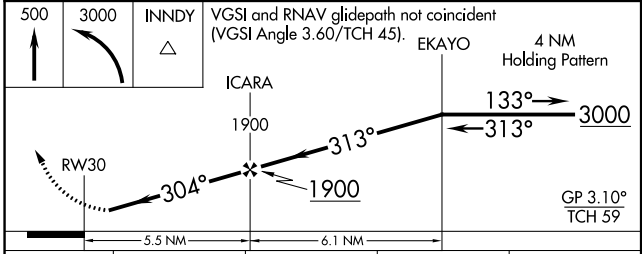
PROVIDENCE APP CON*	128.7 269.525
---------------------	----------------------

UNICOM 122.7 (CTAF)



NE-1, 29 MAR 2018 to 26 APR 2018

NE-1, 29 MAR 2018 to 26 APR 2018



ELEV 42	TDZE 42
---------	---------

CATEGORY	A	B	C	D
LPV DA	359-1		317 (400-1)	
LNAV/VNAV DA	526-1½		484 (500-1½)	
LNAV MDA	600-1	558 (600-1)	600-1½	558 (600-1½)
C CIRCLING	600-1	558 (600-1)	660-1¾ 618 (700-1¾)	760-2¼ 718 (800-2¼)

