

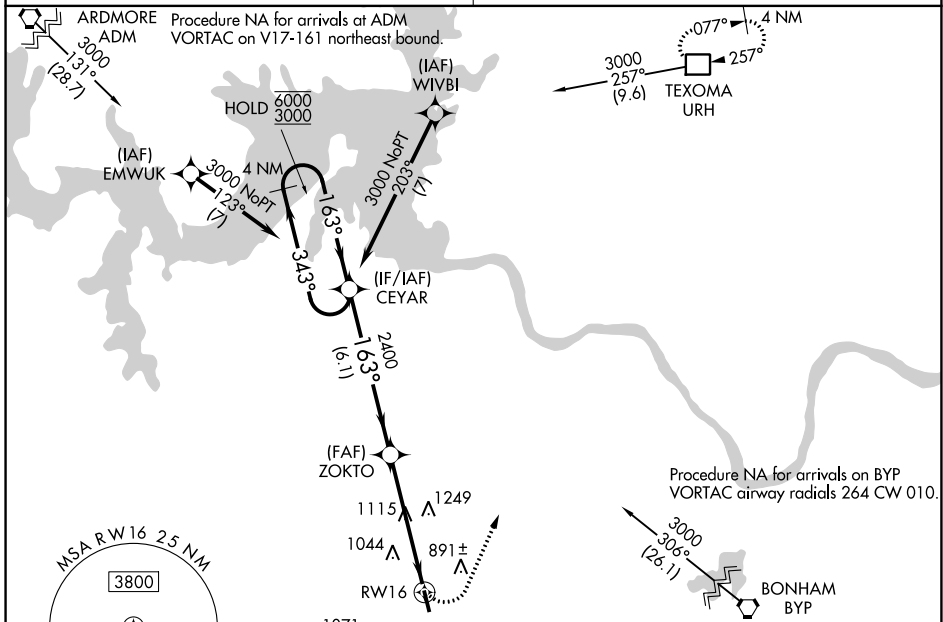
APP CRS	Rwy Idg	<b>4000</b>
<b>163°</b>	TDZE	<b>746</b>
	Apt Elev	<b>746</b>

# RNAV (GPS) RWY 16

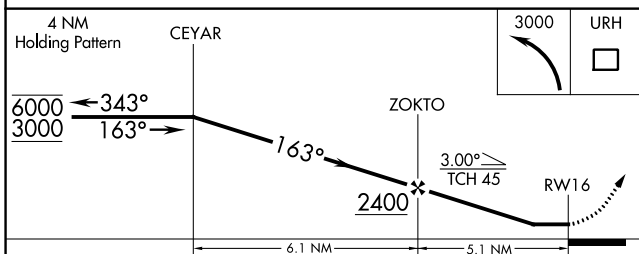
SHERMAN MUNI (SWI)

RNP APCH	<p>Use Sherman/Denison altimeter setting, if not received use Dallas Love Fld altimeter setting and increase all MDA 140 feet and increase LNAV visibility Cat B ¼ SM, Cat C ½ SM, and increase Circling visibility Cats A/B ¼ SM, Cat C ½ SM. Procedure NA at night. Rwy 16 helicopter visibility reduction below 1 SM NA.</p>	<p>MISSED APPROACH: Climbing left turn to 3000 direct URH DME and hold.</p>
----------	---	---

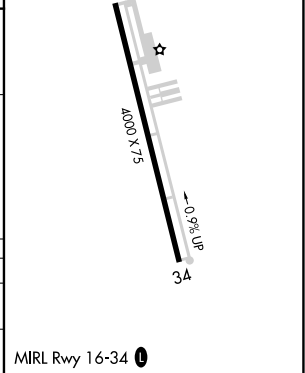
<p><b>FORT WORTH CENTER</b> <b>124.75 323.0</b></p>	<p><b>UNICOM</b> <b>122.8 (CTAF) 0</b></p>
---	--



ELEV 746	TDZE 746
----------	----------



CATEGORY	A	B	C	D
LNAV MDA	1440-1	694 (700-1)	1440-2 694 (700-2)	NA
CIRCLING	1440-1	694 (700-1)	1620-2½ 874 (900-2½)	NA



SC-2, 20 MAY 2021 to 17 JUN 2021

SC-2, 20 MAY 2021 to 17 JUN 2021

WAAS CH <b>86534</b> <b>W34A</b>	APP CRS <b>343°</b>	Rwy Idg <b>4000</b> TDZE <b>739</b> Apt Elev <b>746</b>
--	------------------------	---

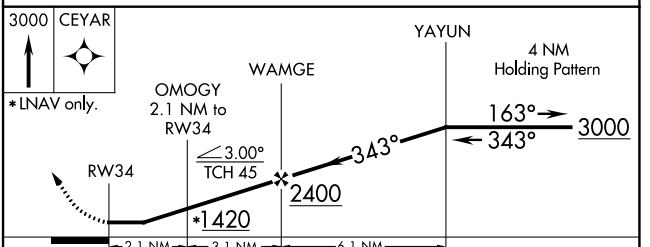
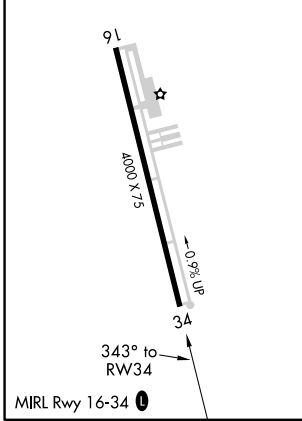
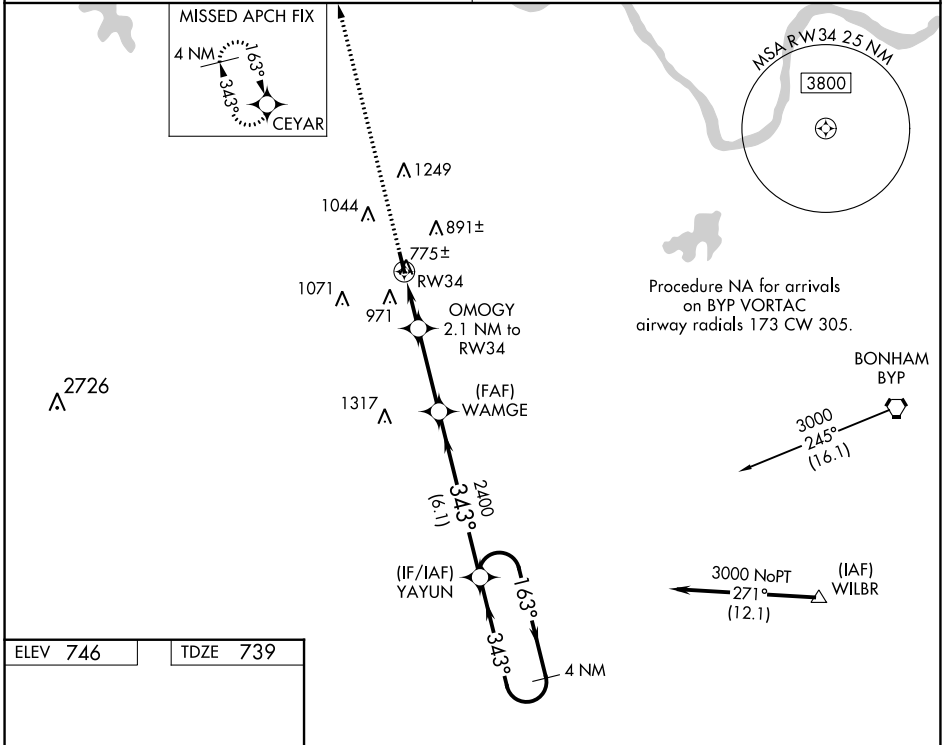
# RNAV (GPS) RWY 34

SHERMAN MUNI (SWI)

**NA** DME/DME RNP-0.3 NA. Use Sherman/Denison altimeter setting, if not received, use Dallas Love Fld altimeter setting and increase all MDA 140 feet; increase LP and LNAV Cat C visibility  $\frac{3}{8}$  mile, Circling Cat B visibility  $\frac{1}{4}$  mile and Cat C visibility  $\frac{1}{2}$  mile. Procedure NA at night. Helicopter visibility reduction below 1 SM NA.

**MISSED APPROACH:**  
Climb to 3000 direct CEYAR and hold.

FORT WORTH CENTER <b>124.75 323.0</b>	UNICOM <b>122.8 (CTAF) 0</b>
--	---------------------------------



CATEGORY	A	B	C	D
LP MDA	1060-1 321 (400-1)			NA
LNAV MDA	1100-1	361 (400-1)	1100-1 $\frac{1}{8}$ 361 (400-1 $\frac{1}{8}$ )	NA
<b>C</b> CIRCLING	1300-1 554 (600-1)	1420-1 674 (700-1)	1620-2 $\frac{1}{2}$ 874 (900-2 $\frac{1}{2}$ )	NA

SC-2, 20 MAY 2021 to 17 JUN 2021

SC-2, 20 MAY 2021 to 17 JUN 2021

VORTAC BYP <b>114.6</b> Chan <b>93</b>	APP CRS <b>280°</b>	Rwy Idg TDZE Apt Elev <b>N/A</b> <b>N/A</b> <b>746</b>
--	------------------------	---

# VOR/DME-A

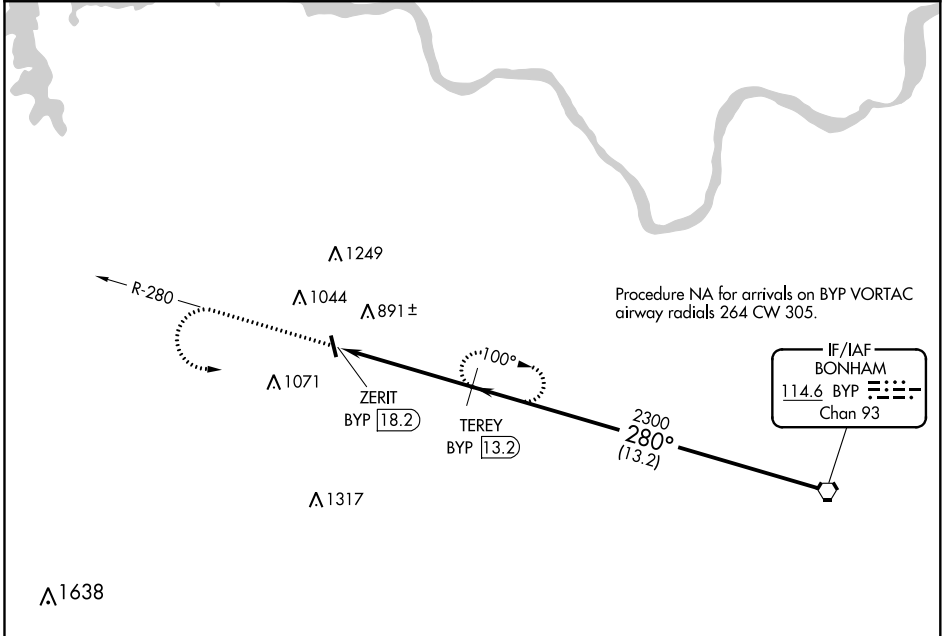
SHERMAN MUNI (SWI)

**⚠** Use Sherman/Denison altimeter setting, when not received, use Dallas Love Fld altimeter setting and increase all MDA 140 feet, increase visibility Cat B ¼ mile, Cat C ½ mile, and Cat D ¼ mile. Procedure NA at night.  
**⚠ NA** Helicopter visibility reduction below 1 SM NA.

**MISSED APPROACH:** Climb to 2300, then climbing left turn to 2400 on BYP R-280 to TEREY/13.2 DME and hold.

FORT WORTH CENTER  
**124.75 323.0**

UNICOM  
**122.8 (CTAF) 0**



SC-2, 20 MAY 2021 to 17 JUN 2021

SC-2, 20 MAY 2021 to 17 JUN 2021

