

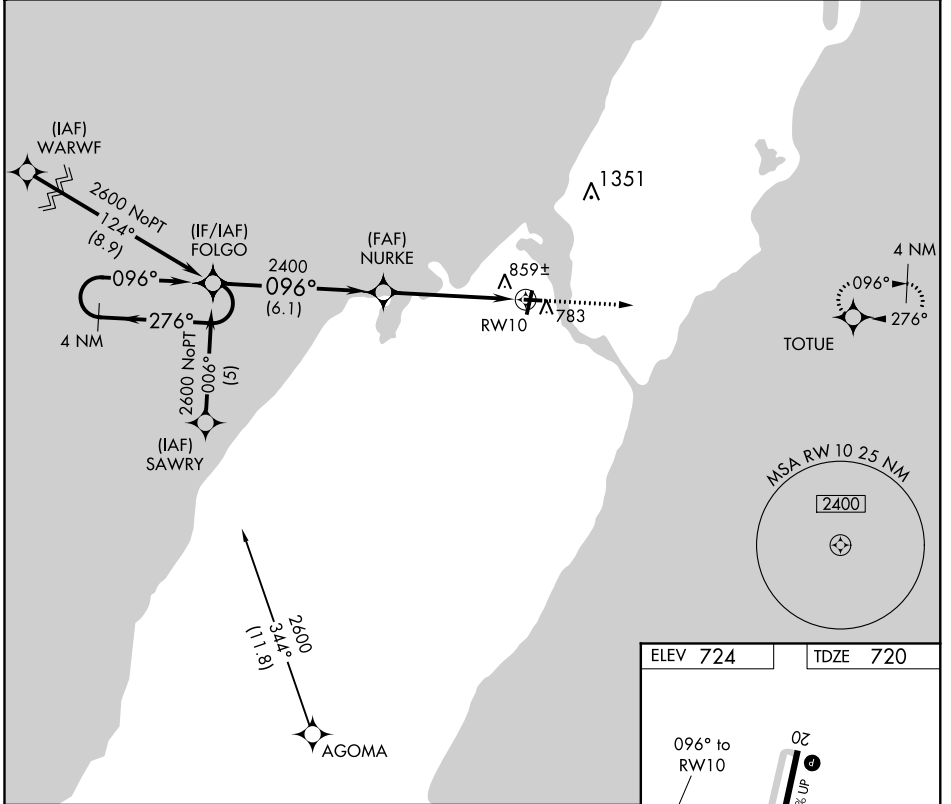
APP CRS	Rwy Idg	<b>3199</b>
<b>096°</b>	TDZE	<b>720</b>
	Apt Elev	<b>724</b>

**RNAV (GPS) RWY 10**  
DOOR COUNTY CHERRYLAND (SUE)

**⚠** When local altimeter setting not received, use Menominee altimeter setting and increase all MDA 60 feet, and LNAV Cat C visibility ¼ mile.  
VDP NA when using Menominee altimeter setting. DME/DME RNP -0.3 NA.

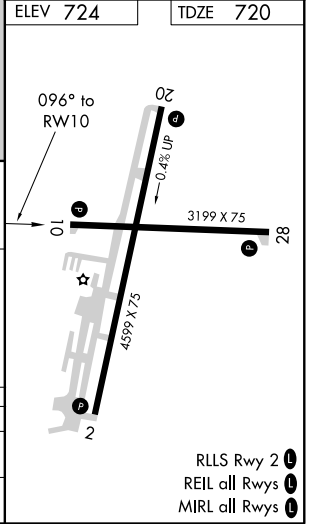
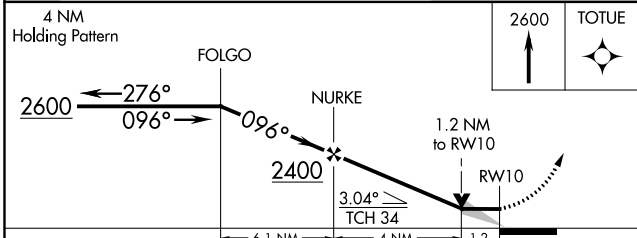
**MISSED APPROACH:** Climb to 2600 direct TOTUE and hold.

AWOS-3PT <b>128.325</b>	GREEN BAY APP CON ★ <b>119.25 338.2</b>	UNICOM <b>122.7 (CTAF) 0</b>
----------------------------	--	---------------------------------



EC-3, 01 MAR 2018 to 29 MAR 2018

EC-3, 01 MAR 2018 to 29 MAR 2018



CATEGORY	A	B	C	D
LNAV MDA	1120-1 400 (400-1)		1120-1 ¼ 400 (400-1 ¼)	NA
CIRCLING	1160-1 436 (500-1)	1180-1 456 (500-1)	1180-1 ½ 456 (500-1 ½)	NA

WAAS CH <b>81904</b> <b>W02A</b>	APP CRS <b>016°</b>	Rwy Idg <b>4599</b> TDZE <b>724</b> Apt Elev <b>724</b>
--	------------------------	---

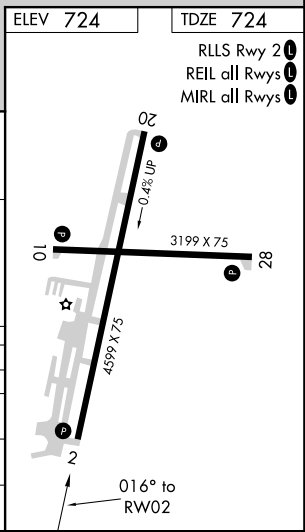
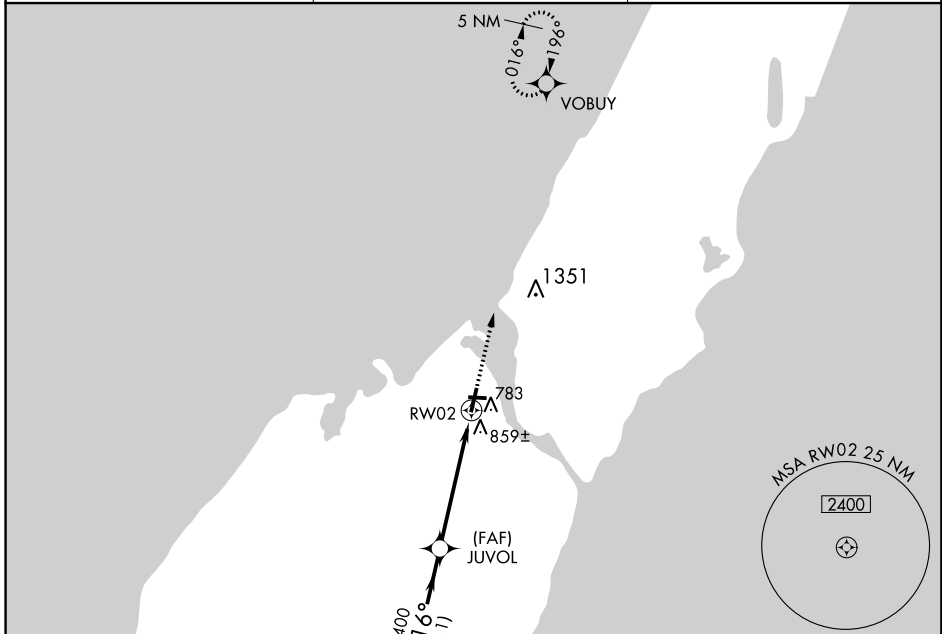
# RNAV (GPS) RWY 2

DOOR COUNTY CHERRYLAND (SUE)

Baro-VNAV and VDP NA when using Menominee altimeter setting. When local altimeter setting not received, use Menominee altimeter setting and increase all DA/MDA 60 feet, and LPV, LNAV/VNAV and LNAV Cat C/D visibilities ¼ mile. For uncompensated Baro-VNAV systems, LNAV/VNAV NA below -16°C (4°F) or above 47°C (116°F). Helicopter visibility reduction below ¼ SM NA. DME/DME RNP-0.3 NA.

MISSED APPROACH: Climb to 2600 direct VOBUY and hold.

AWOS-3PT <b>128.325</b>	GREEN BAY APP CON * <b>119.25 338.2</b>	UNICOM <b>122.7(CTAF) 0</b>
----------------------------	--	--------------------------------



Procedure Turn NA

Procedure: NENSE → JUVOL → RWY 2

GP 3.00° TCH 40

3500 → 2400 → 724

016°

10.1 NM, 3.9 NM, 1.1 NM

2600 VOBUY

\*LNAV only.

VGSI and RNAV glidepath not coincident (VGSI Angle 3.00/TCH 34).

CATEGORY	A	B	C	D
LPV DA	1013-1	289 (300-1)		
LNAV/VNAV DA	1164-1½	440 (500-1½)		
LNAV MDA	1120-1	396 (400-1)	1120-1⅛	396 (400-1⅛)
CIRCLING	1160-1 436 (500-1)	1180-1 456 (500-1)	1180-1½ 456 (500-1½)	1280-2 556 (600-2)

EC-3, 01 MAR 2018 to 29 MAR 2018

EC-3, 01 MAR 2018 to 29 MAR 2018

WAAS CH <b>86304</b> <b>W20A</b>	APP CRS <b>196°</b>	Rwy Idg TDZE <b>724</b> Apt Elev <b>724</b>	<b>4599</b>
--	------------------------	---	-------------

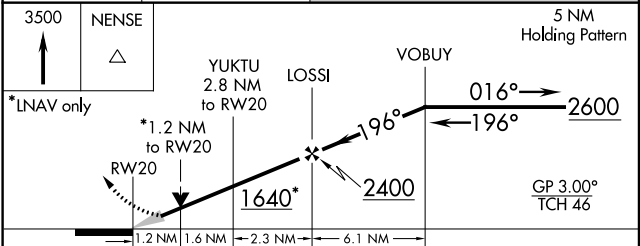
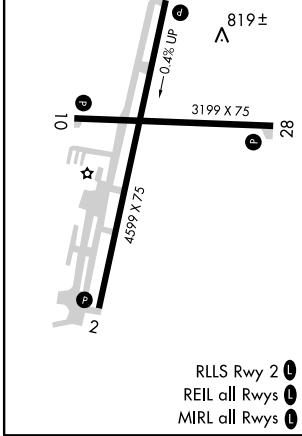
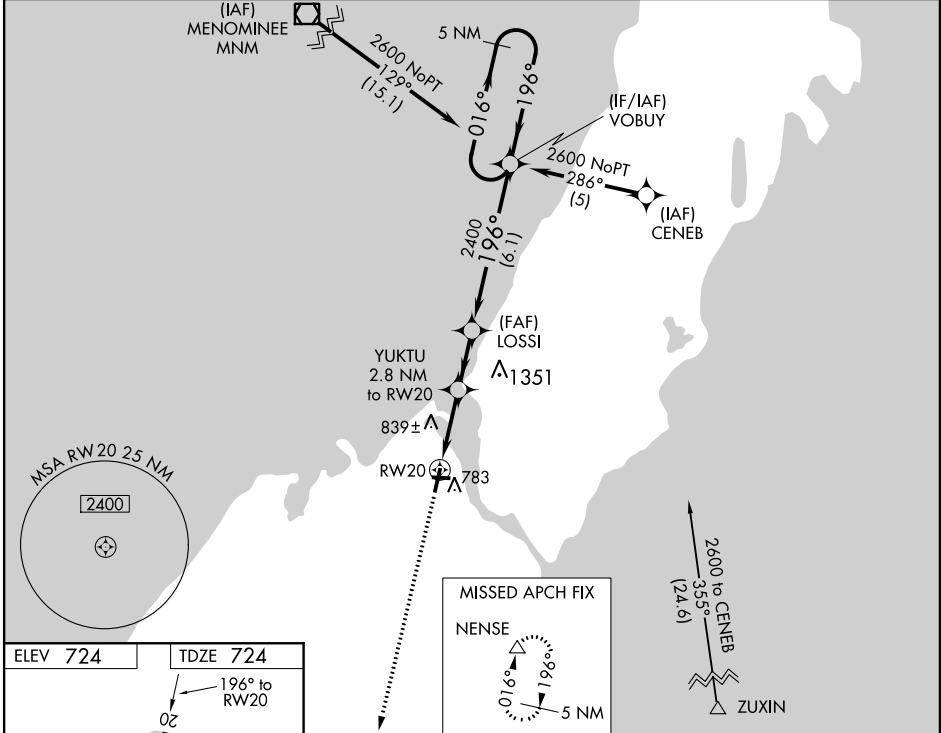
# RNAV (GPS) RWY 20

DOOR COUNTY CHERRYLAND (SUE)

**⚠** For uncompensated Baro-VNAV systems, LNAV/VNAV NA below -16°C (4°F) or below 47°C (116°F). Baro-VNAV and VDP NA when using Menominee altimeter setting. DME/DME RNP-0.3 NA. When local altimeter setting not received, use Menominee altimeter setting and increase all DA/MDA 60 feet, and LPV, LNAV/VNAV and LNAV Cat C/D visibilities ¼ mile.

**MISSED APPROACH:**  
Climb to 3500 direct NENSE and hold.

AWOS-3PT <b>128.325</b>	GREEN BAY APP CON ★ <b>119.25 338.2</b>	UNICOM <b>122.7 (CTAF) 0</b>
----------------------------	--	---------------------------------



CATEGORY	A	B	C	D
LPV DA		974-7/8	250 (300-7/8)	
LNAV/VNAV DA		1069-1 1/4	345 (400-1 1/4)	
LNAV MDA	1120-1	396 (400-1)	1120-1 1/8	396 (400-1 1/8)
CIRCLING	1160-1 436 (500-1)	1180-1 456 (500-1)	1180-1 1/2 456 (500-1 1/2)	1280-2 556 (600-2)

EC-3, 01 MAR 2018 to 29 MAR 2018

EC-3, 01 MAR 2018 to 29 MAR 2018

APP CRS <b>276°</b>	Rwy Idg <b>3199</b>
	TDZE <b>720</b>
	Apt Elev <b>724</b>

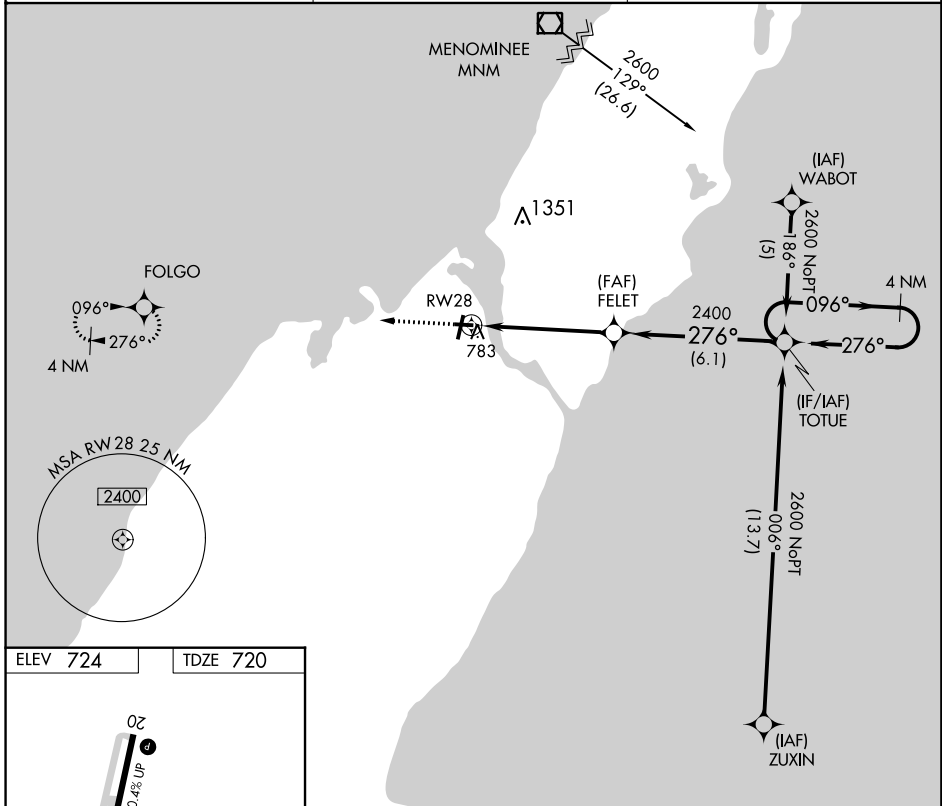
# RNAV (GPS) RWY 28

DOOR COUNTY CHERRYLAND (SUE)

**⚠** DME/DME RNP-0.3 NA. When local altimeter setting not received, use Menominee altimeter setting and increase all MDA 60 feet, and LNAV Cat C visibility 1/8 mile. Helicopter visibility reduction below 1 SM NA.

**MISSED APPROACH:** Climb to 2600 direct FOLGO and hold.

AWOS-3PT <b>128.325</b>	GREEN BAY APP CON * <b>119.25 338.2</b>	UNICOM <b>122.7 (CTAF)</b> <b>0</b>
----------------------------	--	--



EC-3, 01 MAR 2018 to 29 MAR 2018

EC-3, 01 MAR 2018 to 29 MAR 2018

